

Fountain Plaza I&II

Class A office space in
West Campus Federal Way

501 & 505 S 336TH ST, FEDERAL WAY, WA



Owned by



ROSEN HARBOTTLE
COMMERCIAL REAL ESTATE

Leasing by



**Kidder
Mathews**



Fountain Plaza is prominently located on the corner of 336th Street & 1st Way S, the hub of West Campus Office



\$28.00/SF, full service



Recent renovations of lobby, common area, restrooms, and building exterior



4.7/1,000 surface parking ratio



Easy access to Hwy 18, Hwy 99, and I-5

Location

Ease of access
to amenities,
Highways 18 & 99,
and Interstate 5

THE COMMONS

TARGET

CINEMARK
The Best Seat in Town

KOHL'S

DICK'S
SPORTING GOODS

macy's

Famous
Footwear

CELEBRATION PARK

Virginia Mason
Franciscan Health



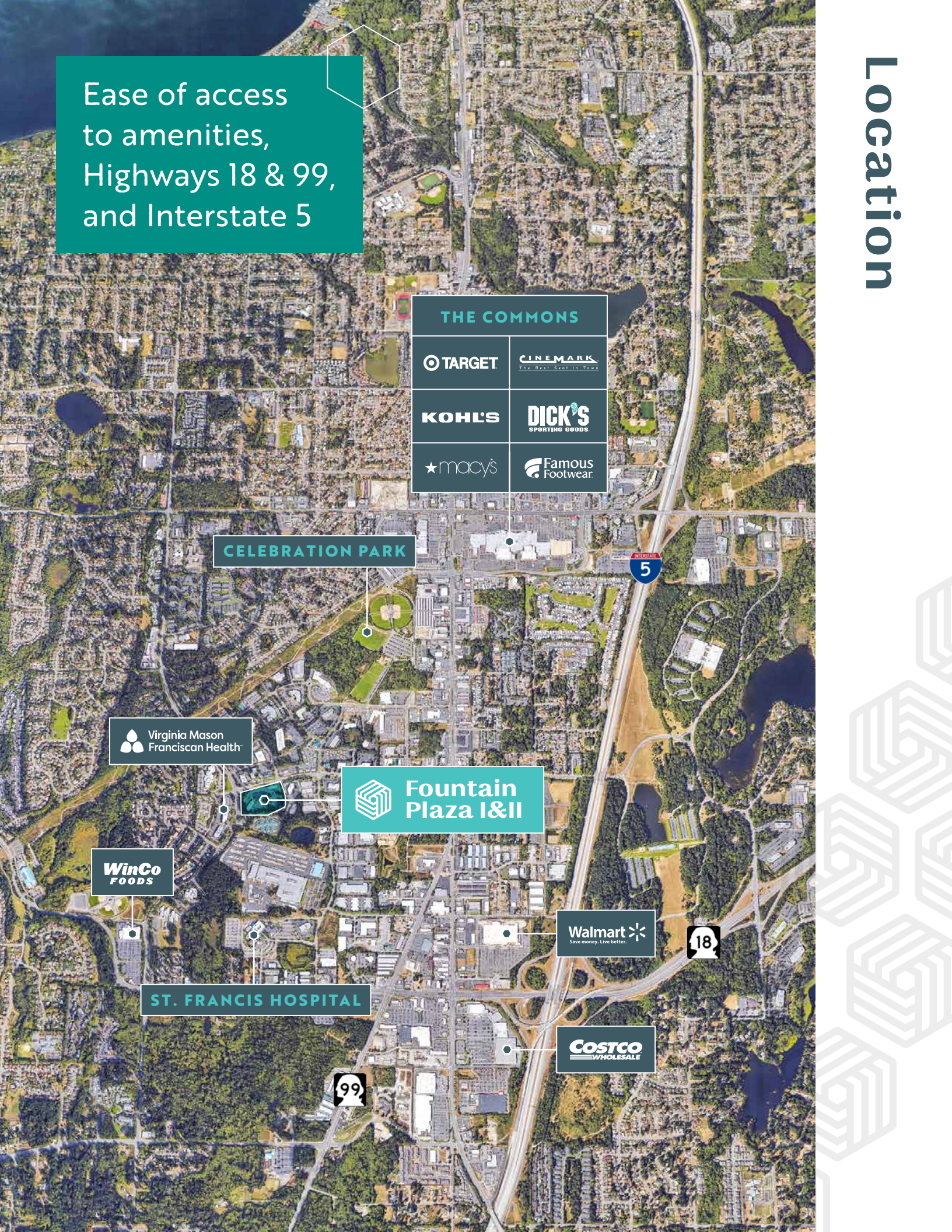
Fountain
Plaza I&I

WinCo
FOODS

Walmart
Save money. Live better.

ST. FRANCIS HOSPITAL

COSTCO
WHOLESALE



The Campus

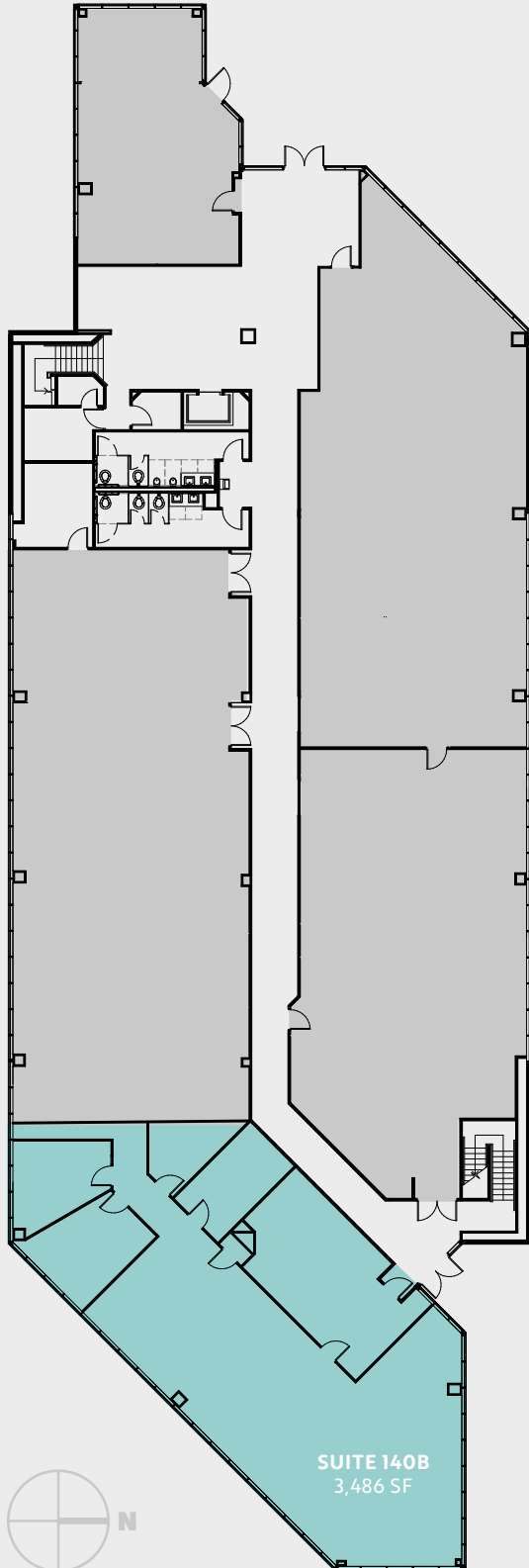


Where business gets done



1st floor

FOUNTAIN PLAZA II



3,486 SF

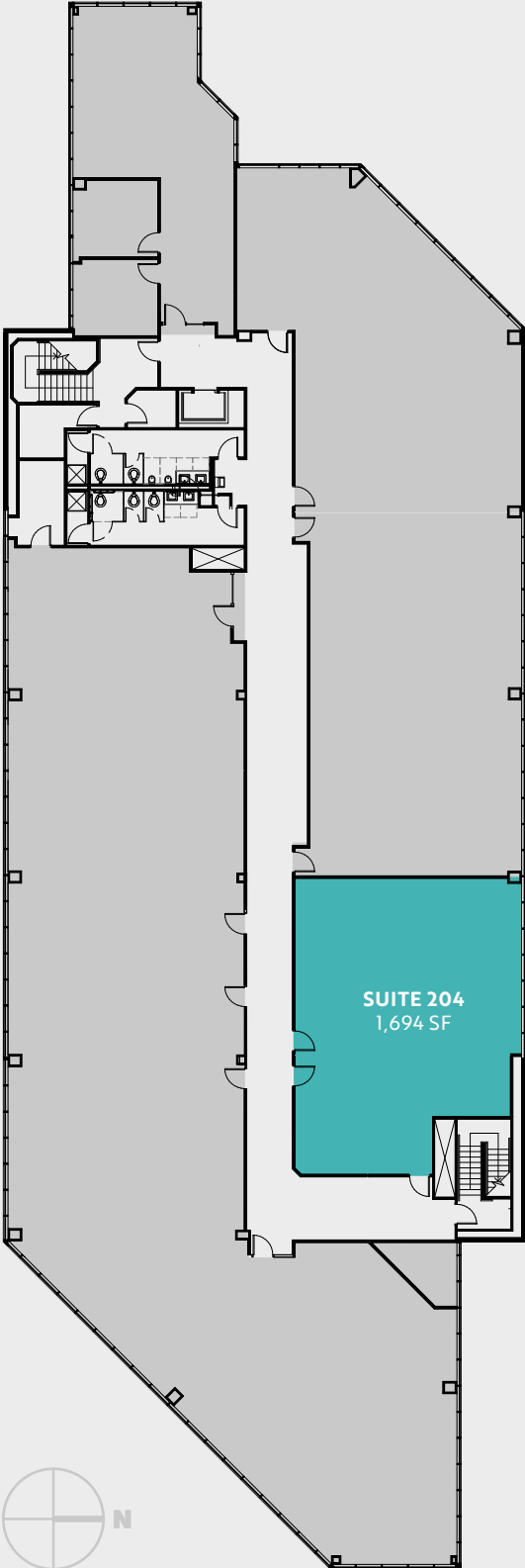
SUITE 140B

Availabilities



2nd floor

FOUNTAIN PLAZA II



1,694 SF

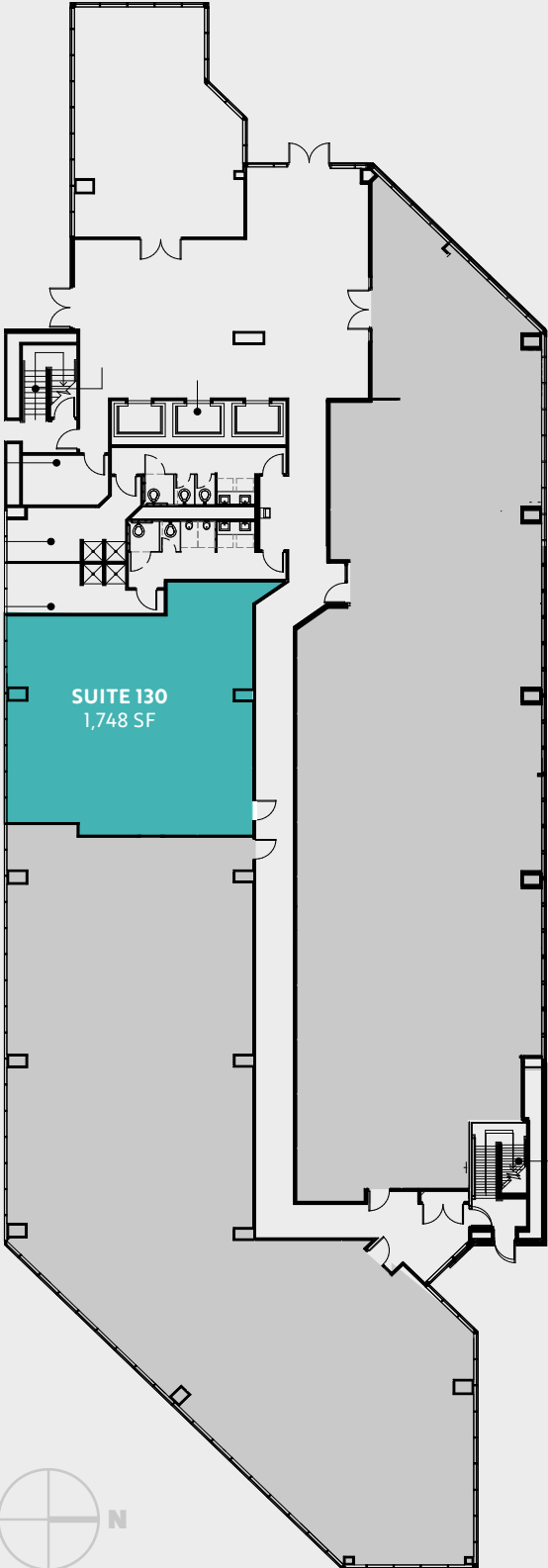
SUITE 204

Availabilities



1st floor

FOUNTAIN PLAZA I



1,748 SF

SUITE 130

Availabilities



3rd floor

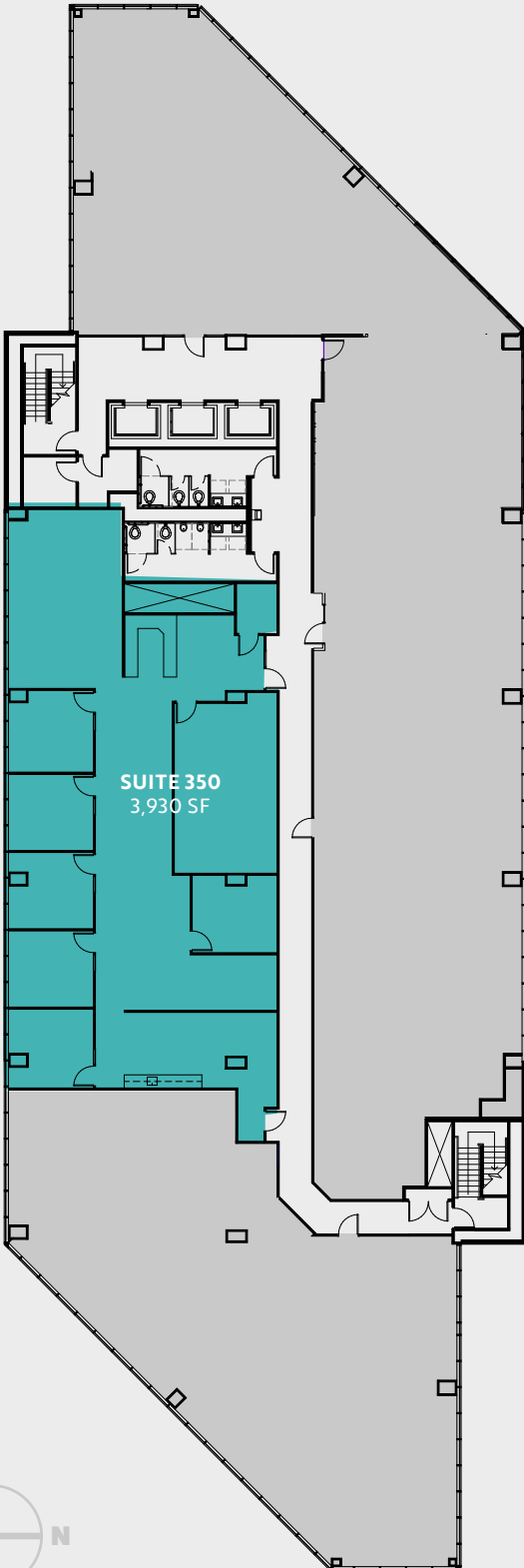
FOUNTAIN PLAZA I

Availabilities

3,930 SF

SUITE 350

AVAILABLE 7/1/26



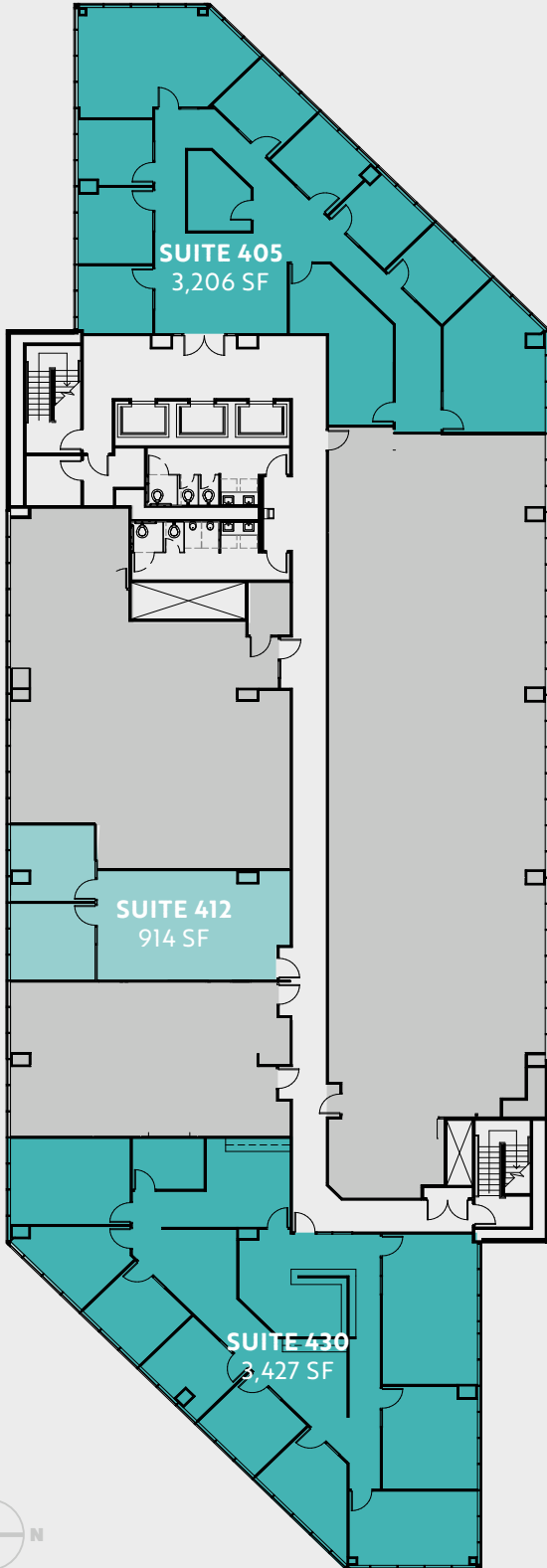
SUITE 350
3,930 SF



4th floor

FOUNTAIN PLAZA I

Availabilities



3,206 SF

SUITE 405

914 SF

SUITE 412

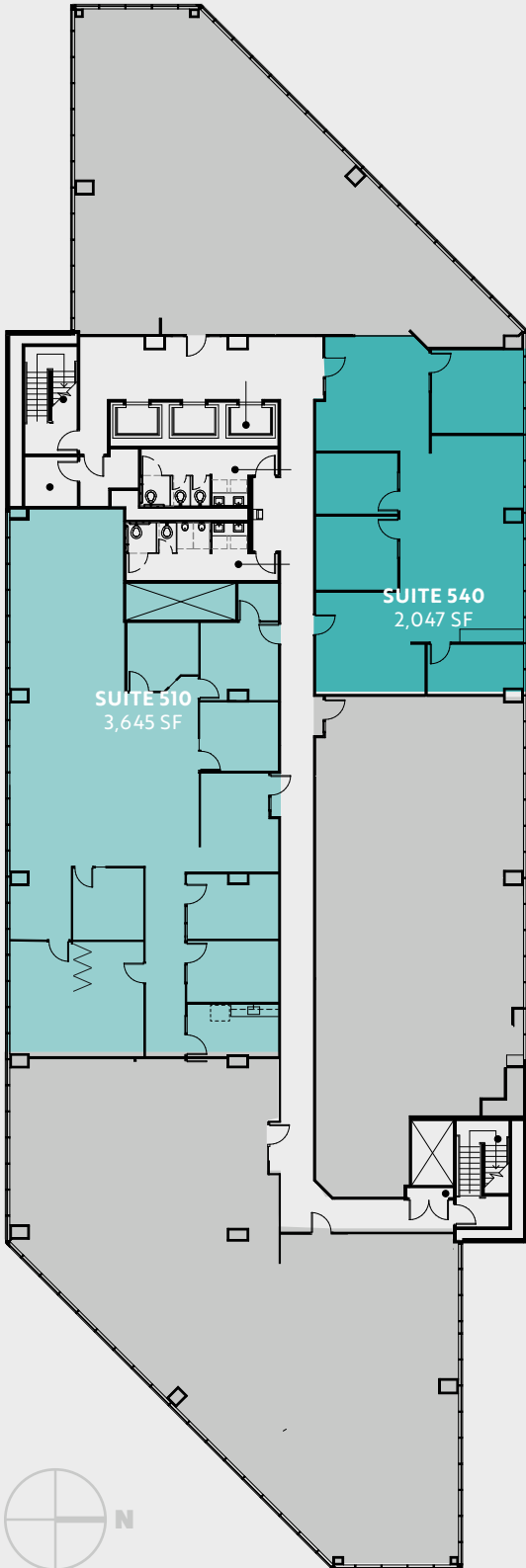
3,427 SF

SUITE 430



5th floor

FOUNTAIN PLAZA I



3,645 SF

SUITE 510

2,047 SF

SUITE 540

Availabilities



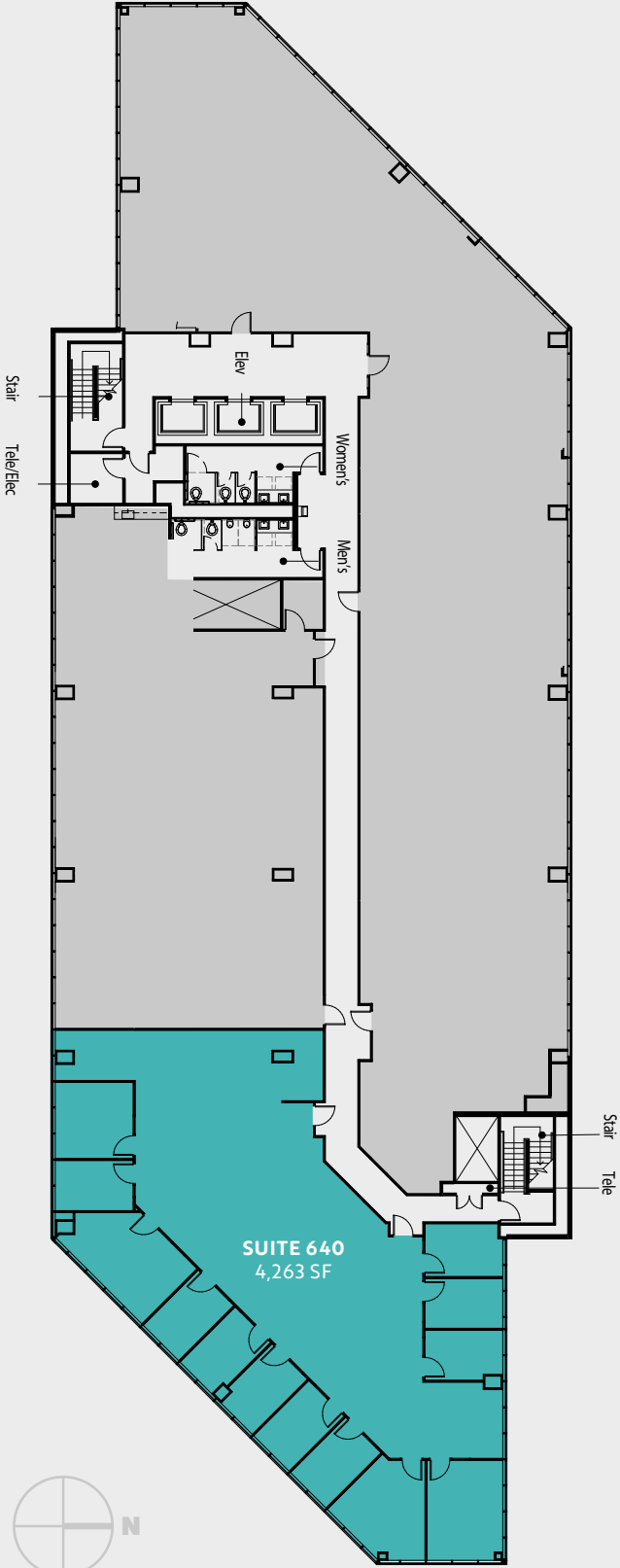
6th floor

FOUNTAIN PLAZA I

Availabilities

4,263 SF

SUITE 640





Fountain Plaza I&II

501 & 505 S 336TH ST
FEDERAL WAY, WA

DREW FRAME, SIOR
253.948.7032
drew.frame@kidder.com

RYAN KERSHAW
206.949.1334
ryan.kershaw@kidder.com

Owned by



ROSEN HARBOTTLE
COMMERCIAL REAL ESTATE

KIDDER.COM

This information supplied herein is from sources we deem reliable. It is provided without any representation, warranty, or guarantee, expressed or implied as to its accuracy. Prospective Buyer or Tenant should conduct an independent investigation and verification of all matters deemed to be material, including, but not limited to, statements of income and expenses. Consult your attorney, accountant, or other professional advisor.

Leased by



**Kidder
Mathews**