



STAND-ALONE
PAD BUILDING

AVAILABLE

JAMES CENTER

6901 S. 19th Street Tacoma, WA 98465

Jack Rosen

425.289.2221

jack@rosenharbottle.com

Grant Rubenstein

425.289.2220

grant@rosenharbottle.com

425.454.3030
rosenharbottle.com

PO Box 5003
Bellevue, WA 98009 - 5003





STAND ALONE PAD SITE WITH DRIVE-THRU

16,750 SF Available

CALL AGENT FOR RATES

PROPERTY FEATURES:

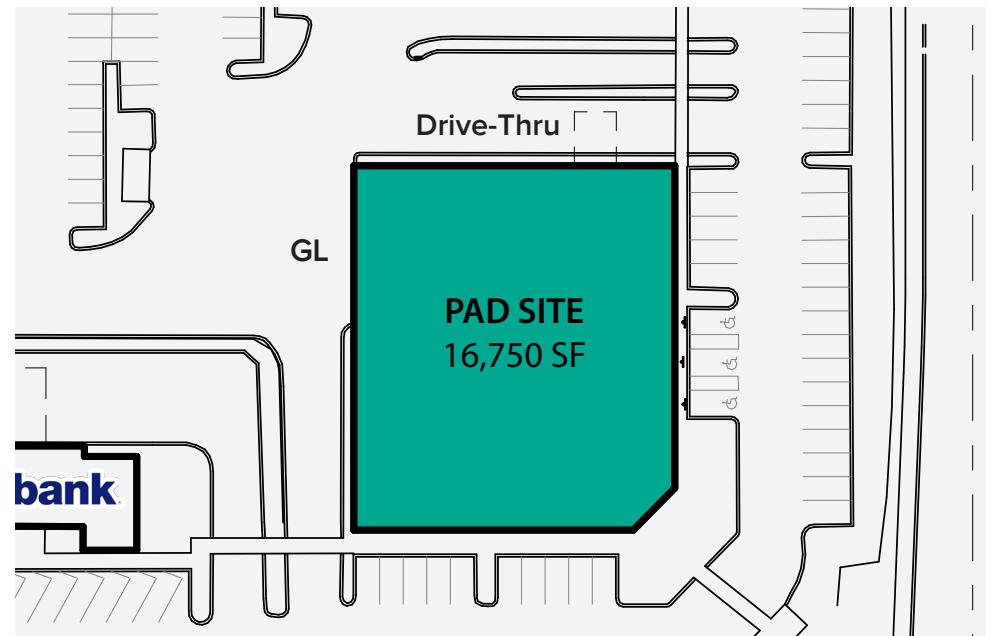
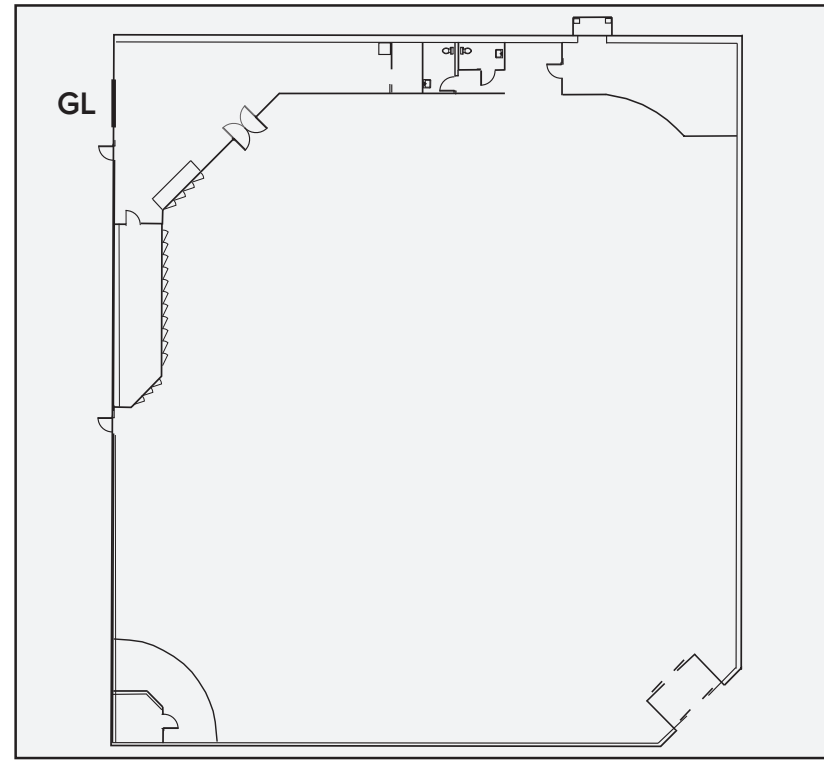
- Fred Meyer Anchored Center
- Strong Tenant Mix Including U.S. Bank, IHOP, Taco Bell, Subway, Multicare and FedEx
- Monument Signage Available
- Directly Across from Tacoma Community College & Transit Center
- Proposed 550 Multi-Family Housing Next Door
- Abundant Parking

The information provided herein has been obtained from sources believed to be reliable, but no representation or warranty, express or implied, is made with respect to the accuracy or completeness of any such information. Each prospective buyer or tenant should independently investigate, evaluate and verify all information provided herein and any other matters deemed material. Please consult your attorney, tax advisor or other professional advisor. The terms of sale or lease set forth herein are subject to change or withdrawal at any time and without notice.

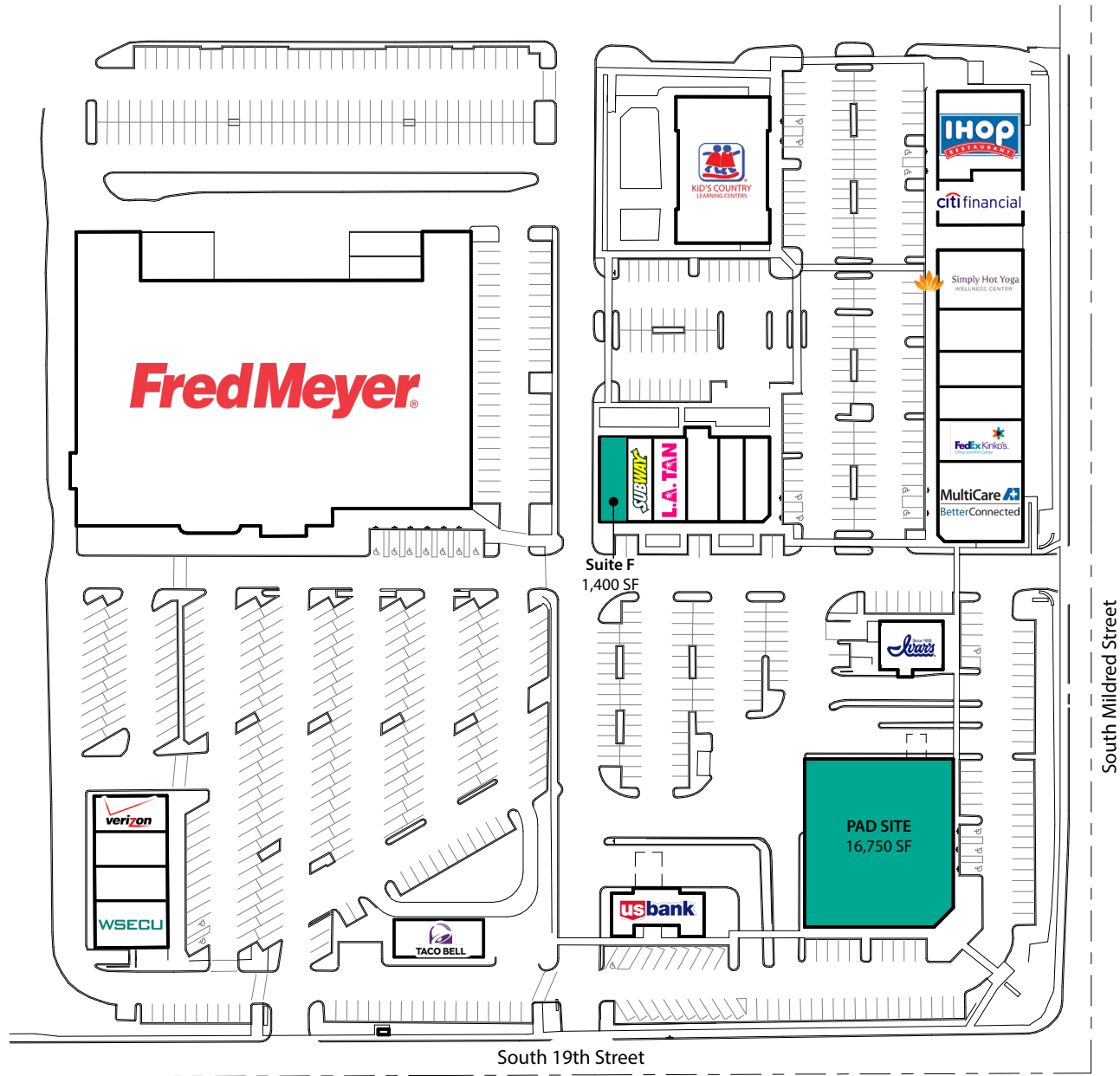
AVAILABLE PAD BUILDING

AMENITIES & FEATURES:

- **16,750 SF**
- **Call for Rates**
- Existing Drive-Thru
- GL Loading Door
- Corner Visibility from South 19th Street and South Mildred Street
- Across from Fred Meyer
- Near US Bank & Ivars
- Abundant Parking



SITE PLAN



AREA MAP

