

OFFICE  
LEASE



# FORUM BUILDING

640 NW Gilman Blvd | Issaquah, WA 98027

**Brian Stewart**

425.289.2222

brians@rosenharbottle.com

**Stossi Tsantilas**

425.279.7943

stossit@rosenharbottle.com

425.454.3030  
rosenharbottle.com

PO Box 5003  
Bellevue, WA 98009 - 5003





# OFFICE AND MEDICAL BUILDING ON GILMAN

**783 SF Available**

**\$2,950/Month, Full Service**

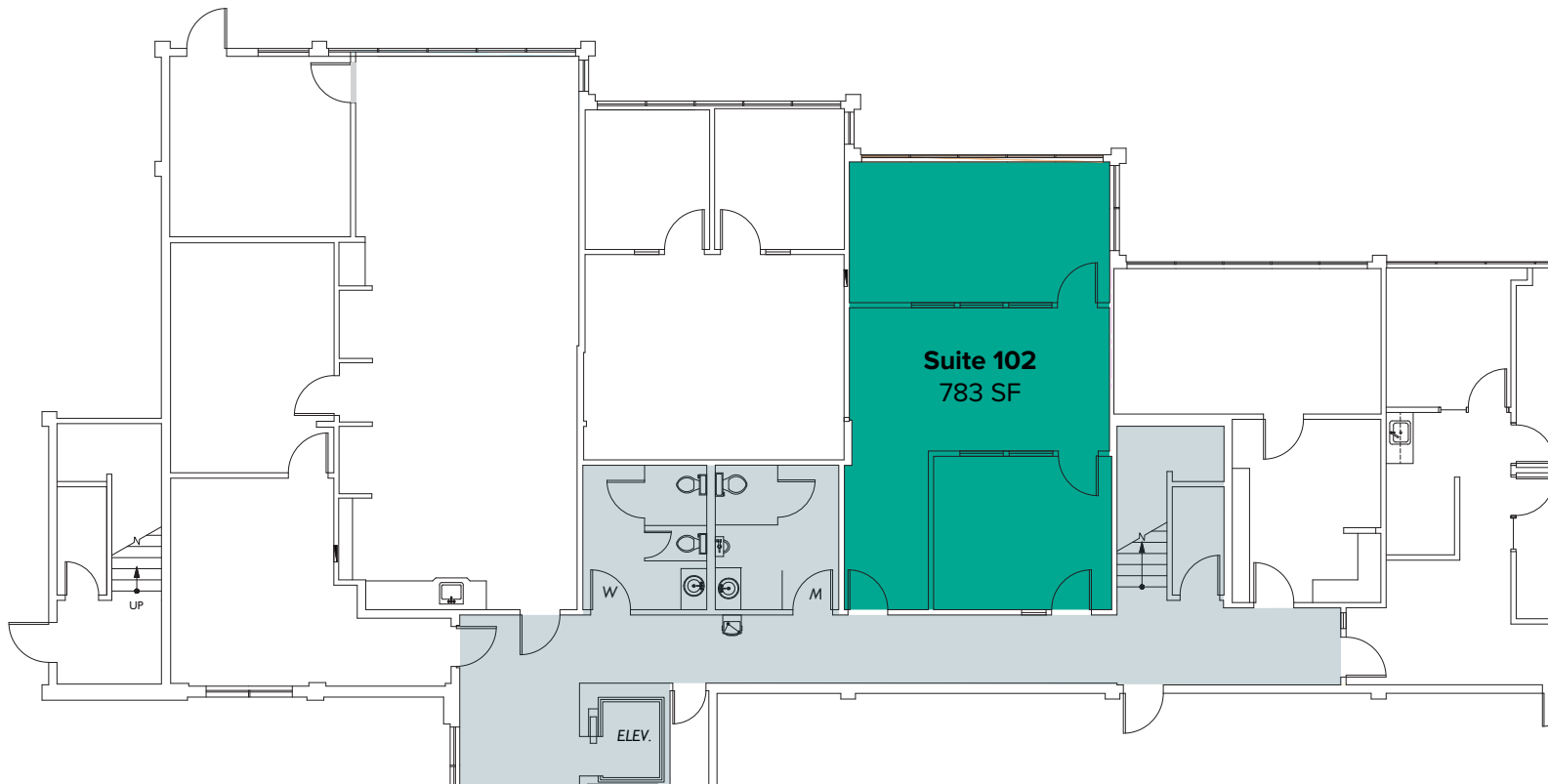
## DETAILS:

- Quick access to I-90
- Easy walk to Gilman Boulevard retail stores and restaurants
- Beautiful landscaping with Issaquah Creek view
- Short walk to Issaquah Preston Trail

The information provided herein has been obtained from sources believed to be reliable, but no representation or warranty, express or implied, is made with respect to the accuracy or completeness of any such information. Each prospective buyer or tenant should independently investigate, evaluate and verify all information provided herein and any other matters deemed material. Please consult your attorney, tax advisor or other professional advisor. The terms of sale or lease set forth herein are subject to change or withdrawal at any time and without notice.

# FIRST LEVEL FLOOR PLAN

Suite	Square Feet	Rent	Notes
102	783 SF	\$2,950/Month, Full Service	First floor office space with reception area, open work area, and lobby entry. <b>Available Now.</b>



The information provided herein has been obtained from sources believed to be reliable, but no representation or warranty, express or implied, is made with respect to the accuracy or completeness of any such information. Each prospective buyer or tenant should independently investigate, evaluate and verify all information provided herein and any other matters deemed material. Please consult your attorney, tax advisor or other professional advisor. The terms of sale or lease set forth herein are subject to change or withdrawal at any time and without notice.

# LOCATION MAP

