

BEAR CREEK PLAZA

19011 Woodinville-Snohomish Road NE, Woodinville, WA 98072

**ONE SPACE
REMAINING!**



Multi-Purpose or Office Space Near Downtown Woodinville

1,818 SF Available

BUILDING FEATURES:

- \$14.50/SF Gross
- Excellent Freeway Access to SR-522 & I-405
- Unconventional Uses Welcome
- Frontage on Woodinville-Snohomish Road
- Building Signage Available
- Elevator
- Abundant Parking
- Close to Downtown Woodinville, Costco & Wineries

ROSEN | HARBOTTLE
RH

For more information, contact:

**ROSEN~HARBOTTLE
COMMERCIAL REAL ESTATE**

Caleb Farnworth, CCIM

(425) 289-2235

calebf@rosenharbottle.com

www.rosenharbottle.com

Rosen~Harbottle Commercial Real Estate | P.O. Box 5003 Bellevue, WA 98009-5003
phone: (425) 454-3030 fax: (425) 454-6705 | www.rosenharbottle.com

The information provided has been obtained from sources believed reliable. While we do not doubt its accuracy, we have not verified and make no guarantee, warranty or representation about it. It is your sole responsibility to independently confirm its accuracy and completeness.

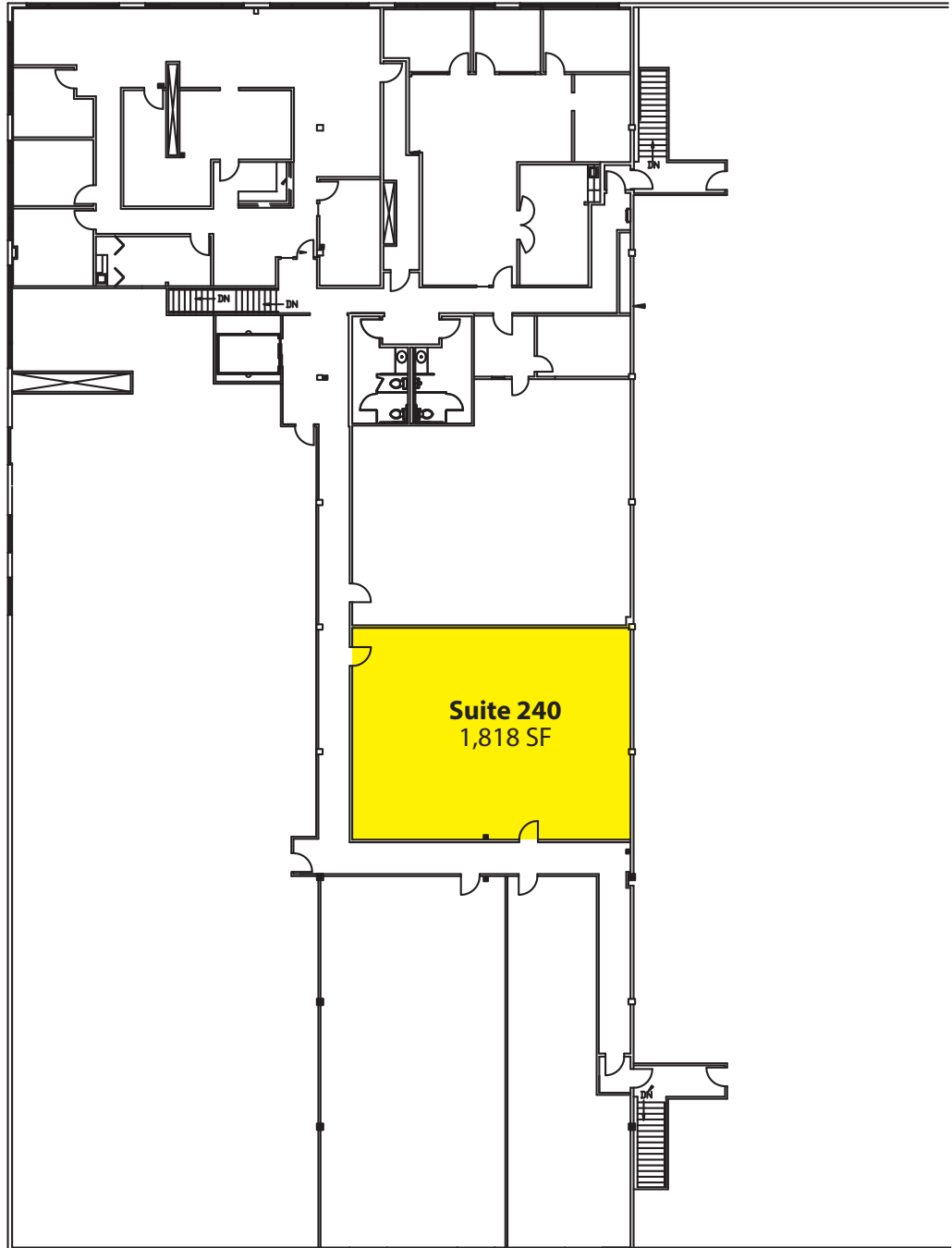
BEAR CREEK PLAZA

19011 Woodinville-Snohomish Road NE, Woodinville, WA 98072

SECOND FLOOR

Suite 240 - 1,818 SF

- Open Space
- Interior, Vaulted Ceiling
- 3 Skylights



Rosen~Harbottle Commercial Real Estate | P.O. Box 5003 Bellevue, WA 98009-5003
phone: (425) 454-3030 fax: (425) 454-6705 | www.rosenharbottle.com

The information provided has been obtained from sources believed reliable. While we do not doubt its accuracy, we have not verified and make no guarantee, warranty or representation about it. It is your sole responsibility to independently confirm its accuracy and completeness.

BEAR CREEK PLAZA

19011 Woodinville-Snohomish Road NE, Woodinville, WA 98072



For more information, contact:

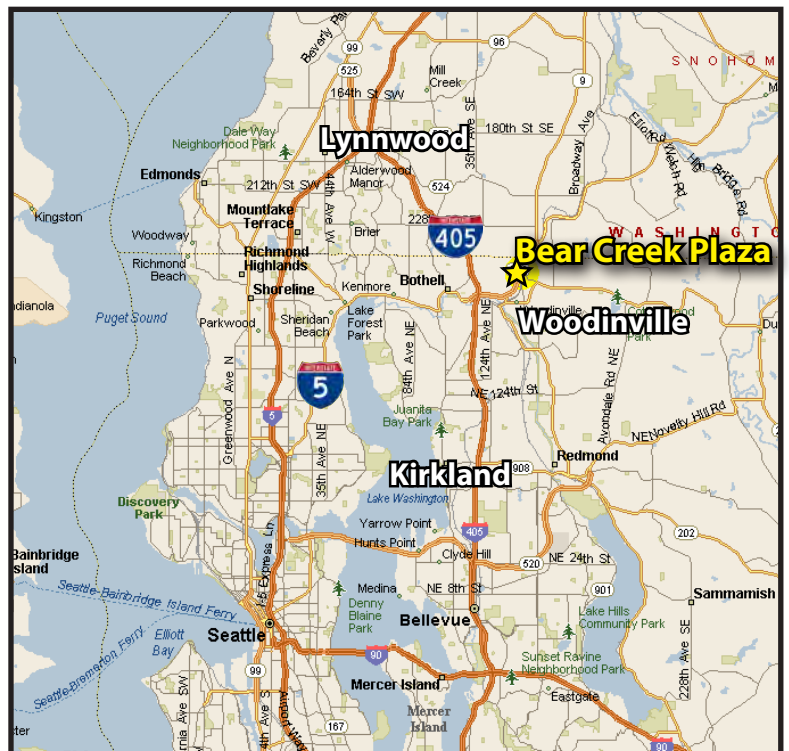
**ROSEN~HARBOTTLE
COMMERCIAL REAL ESTATE**

Caleb Farnworth, CCIM

(425) 289-2235

calebf@rosenharbottle.com

www.rosenharbottle.com



Rosen~Harbottle Commercial Real Estate | P.O. Box 5003 Bellevue, WA 98009-5003
phone: (425) 454-3030 fax: (425) 454-6705 | www.rosenharbottle.com

The information provided has been obtained from sources believed reliable. While we do not doubt its accuracy, we have not verified and make no guarantee, warranty or representation about it. It is your sole responsibility to independently confirm its accuracy and completeness.