

**OFFICE
LEASE**



BONNEY LAKE VILLAGE SHOPPING CENTER

21135 - 21137 State Route 410 E | Bonney Lake, WA

Jack Rosen

425.289.2221

jack@rosenharbottle.com

Brian Stewart

425.289.2222

brians@rosenharbottle.com

Stossi Tsantilas

425.279.7943

stossit@rosenharbottle.com

425.454.3030
rosenharbottle.com

PO Box 5003
Bellevue, WA 98009 - 5003





OFFICE/MEDICAL SPACE AVAILABLE IN BONNEY LAKE

1,639 SF Available

\$18.00/SF, NNN

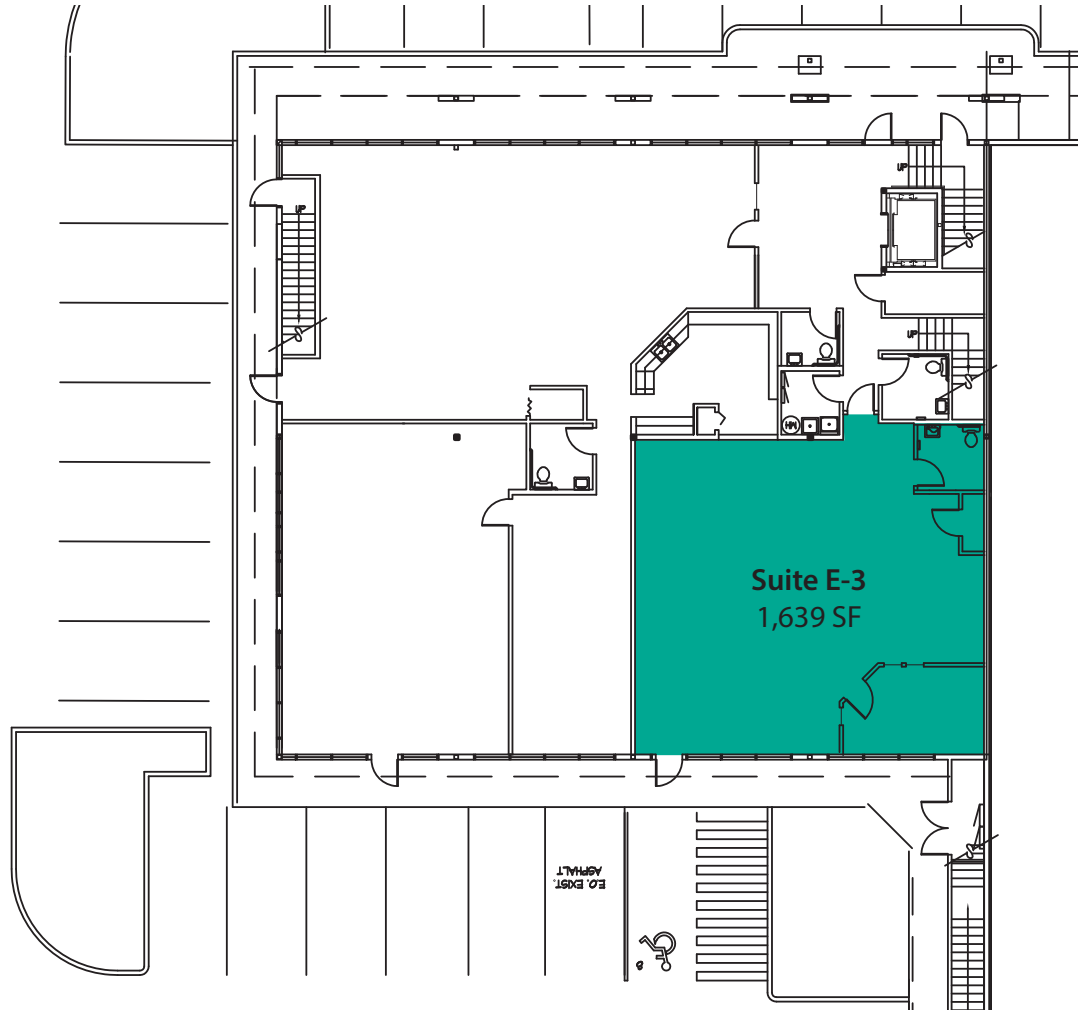
BUILDING & LOCATION FEATURES:

- Abundant Parking
- Elevator Access
- Upgraded Lobby & Finishes
- Close Proximity to the New and Growing Tehaleh Residential Development

The information provided herein has been obtained from sources believed to be reliable, but no representation or warranty, express or implied, is made with respect to the accuracy or completeness of any such information. Each prospective buyer or tenant should independently investigate, evaluate and verify all information provided herein and any other matters deemed material. Please consult your attorney, tax advisor or other professional advisor. The terms of sale or lease set forth herein are subject to change or withdrawal at any time and without notice.

FIRST LEVEL FLOOR PLAN

Suite	Square Feet	Rent	Availability
E-3	1,639 SF	\$18.00/SF, NNN	30 days' notice



The information provided herein has been obtained from sources believed to be reliable, but no representation or warranty, express or implied, is made with respect to the accuracy or completeness of any such information. Each prospective buyer or tenant should independently investigate, evaluate and verify all information provided herein and any other matters deemed material. Please consult your attorney, tax advisor or other professional advisor. The terms of sale or lease set forth herein are subject to change or withdrawal at any time and without notice.

LOCATION MAP

