

RETAIL  
LEASE



## EASTGATE MARKETPLACE

420 N Wilbur Avenue | Walla Walla, WA 99362

**Caleb Farnworth, CCIM**

425.289.2235

calebf@rosenharbottle.com

**Todd Wright**

509.386.2471

toddwright@windermere.com

425.454.3030  
rosenharbottle.com

PO Box 5003  
Bellevue, WA 98009 - 5003



# STAPLES, HARBOR FREIGHT, & ALBERTSON'S ANCHORED RETAIL CENTER

**Retail Rate: \$14.00/SF**

**Retail NNN: \$5.68/SF**

## RETAIL DETAILS:

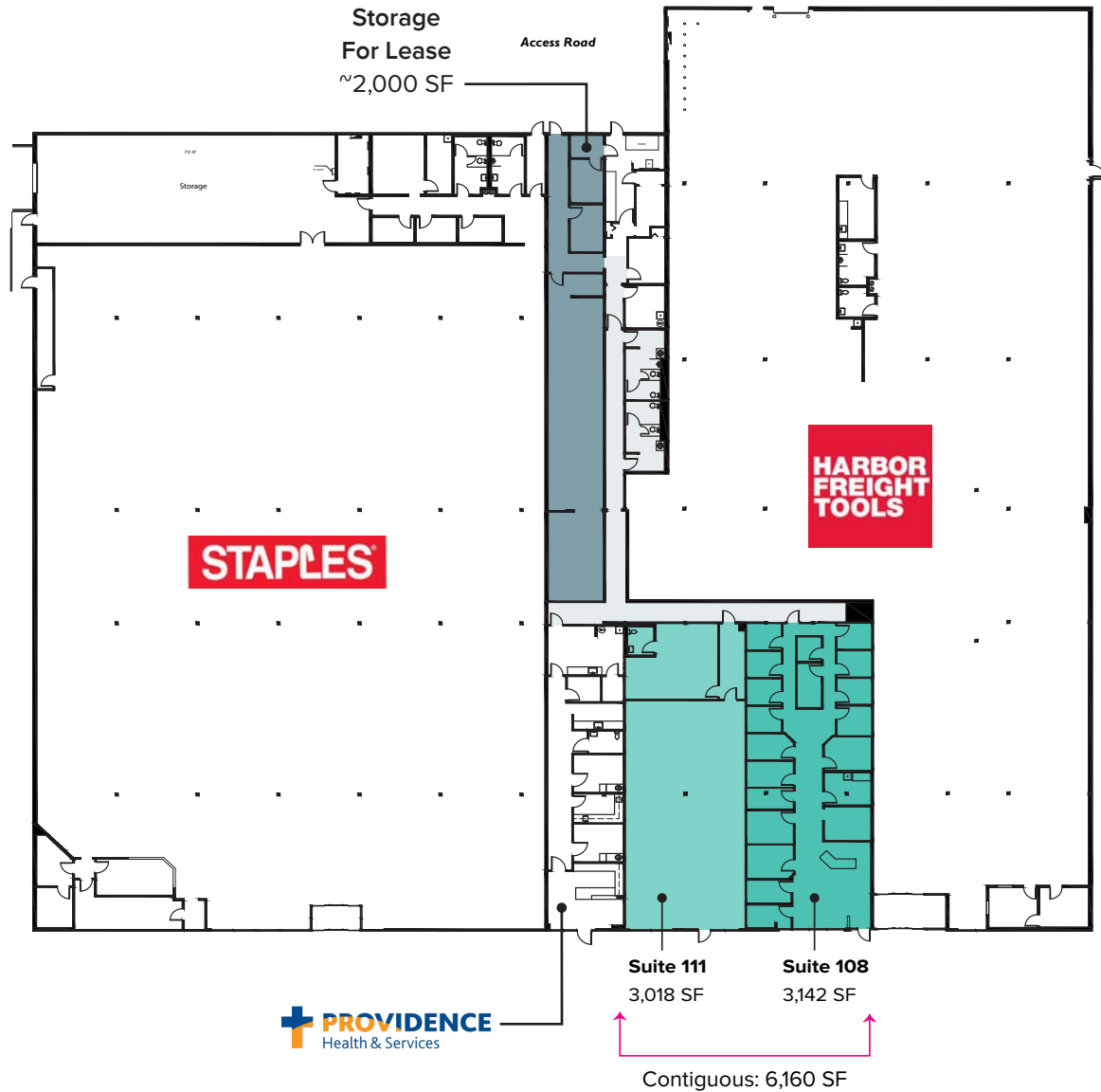
- 3,018 SF - 6,160 SF Available
- Contiguous Space
- Common area restrooms for customers

## STORAGE DETAILS:

- Up to 2,000 SF of storage space available
- \$1,000/Month, Gross
- 24/7 access through rear access road and entry door



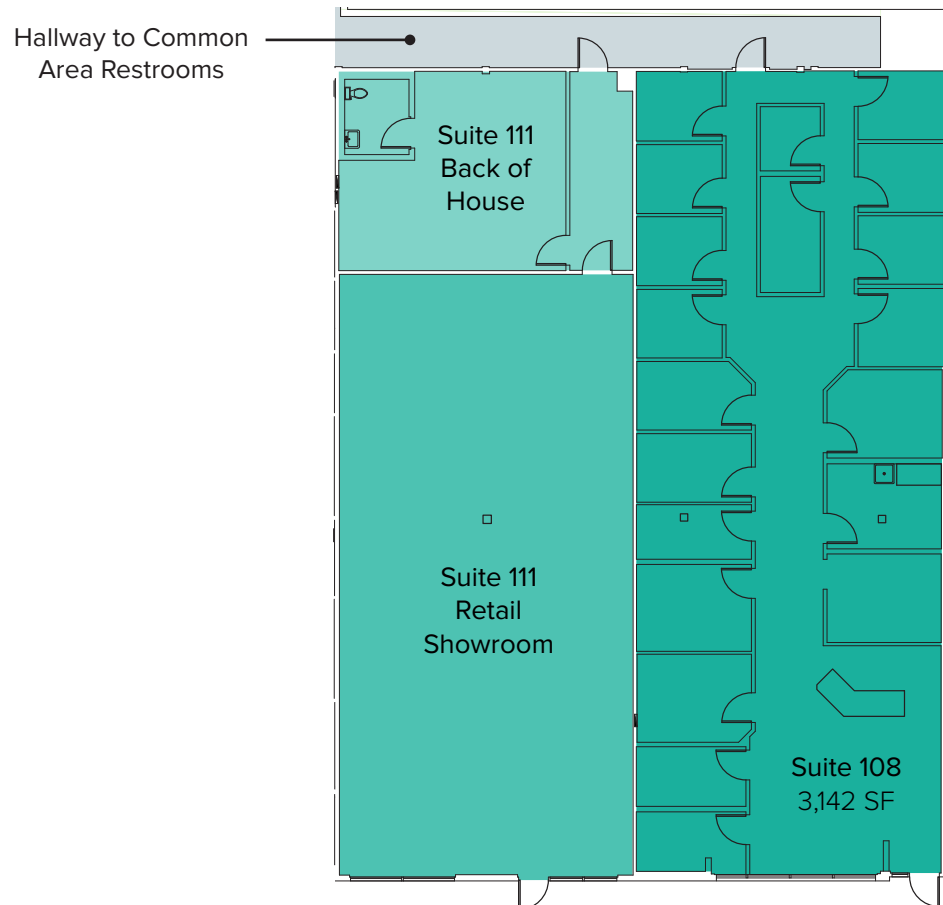
# SITE PLAN



The information provided herein has been obtained from sources believed to be reliable, but no representation or warranty, express or implied, is made with respect to the accuracy or completeness of any such information. Each prospective buyer or tenant should independently investigate, evaluate and verify all information provided herein and any other matters deemed material. Please consult your attorney, tax advisor or other professional advisor. The terms of sale or lease set forth herein are subject to change or withdrawal at any time and without notice.

# RETAIL FLOOR PLAN

Suite	Square Feet	Rate	Notes
108	3,142 SF - 6,160 SF	\$14.00/SF, NNN	Former tanning salon with several private rooms & reception. Contiguous with Suite 111 for a total of 6,160 SF. <b>Available now.</b>
111	3,018 SF - 6,160 SF	\$14.00/SF, NNN	Retail area with showroom area, back of house space, & 1 restroom. Contiguous with Suite 108 for a total of 6,160 SF. <b>Available now.</b>



The information provided herein has been obtained from sources believed to be reliable, but no representation or warranty, express or implied, is made with respect to the accuracy or completeness of any such information. Each prospective buyer or tenant should independently investigate, evaluate and verify all information provided herein and any other matters deemed material. Please consult your attorney, tax advisor or other professional advisor. The terms of sale or lease set forth herein are subject to change or withdrawal at any time and without notice.



# LOCATION MAP

