

# PARK PLACE PROFESSIONAL PLAZA - Bldg F

111 SE Everett Mall Way, Everett, WA 98208



## For Lease/Sale: Northend Office

1,768 SF - 5,594 SF Available

\$11.00/SF\*, NNN

### FEATURES:

- Full, Two-Story Building Available
  - 1,768 SF 2nd Floor | 3,826 SF 1st Floor
- TI Allowance Offered - Contact Listing Agent
- Monument Signage Available
- Beautiful, Park-Like Setting
- Quick Access to I-5, Hwy 99 & Everett Mall
- Major Transit & Amenities Nearby on Everett Mall Way
- **Just Reduced!** Owner/User Sale: \$899,000 (\$161/SF)

\* Rates include \$1.50/SF increases for Y2 & Y3



For more information, contact:

**ROSEN~HARBOTTLE**  
**COMMERCIAL REAL ESTATE**

**Jack Rosen**  
(425) 289-2221  
jack@rosenharbottle.com

www.rosenharbottle.com

Rosen~Harbottle Commercial Real Estate | P.O. Box 5003 Bellevue, WA 98009-5003  
phone: (425) 454-3030 fax: (425) 454-6705 | www.rosenharbottle.com

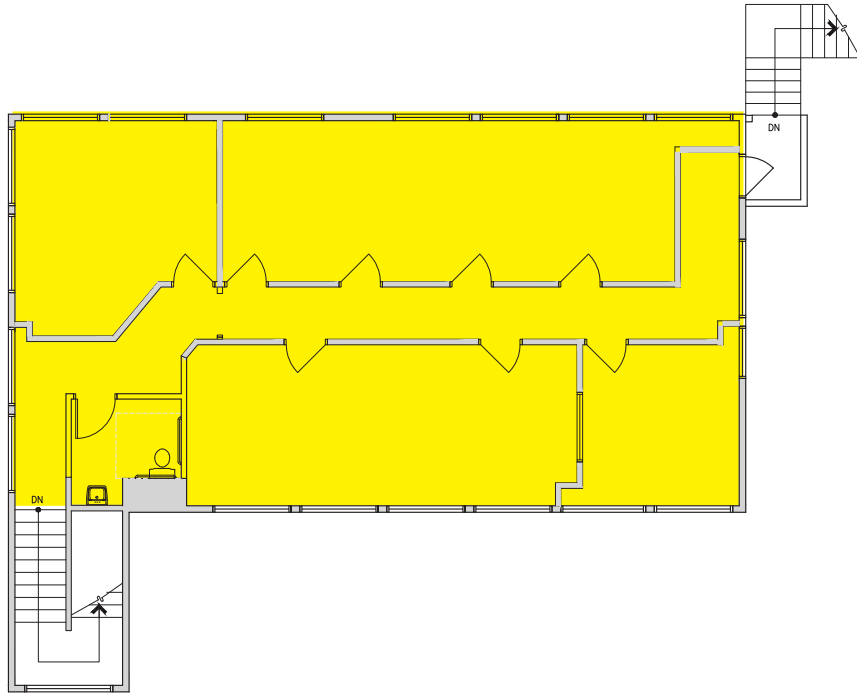
The information provided has been obtained from sources believed reliable. While we do not doubt its accuracy, we have not verified and make no guarantee, warranty or representation about it. It is your sole responsibility to independently confirm its accuracy and completeness.

# PARK PLACE PROFESSIONAL PLAZA - Bldg F

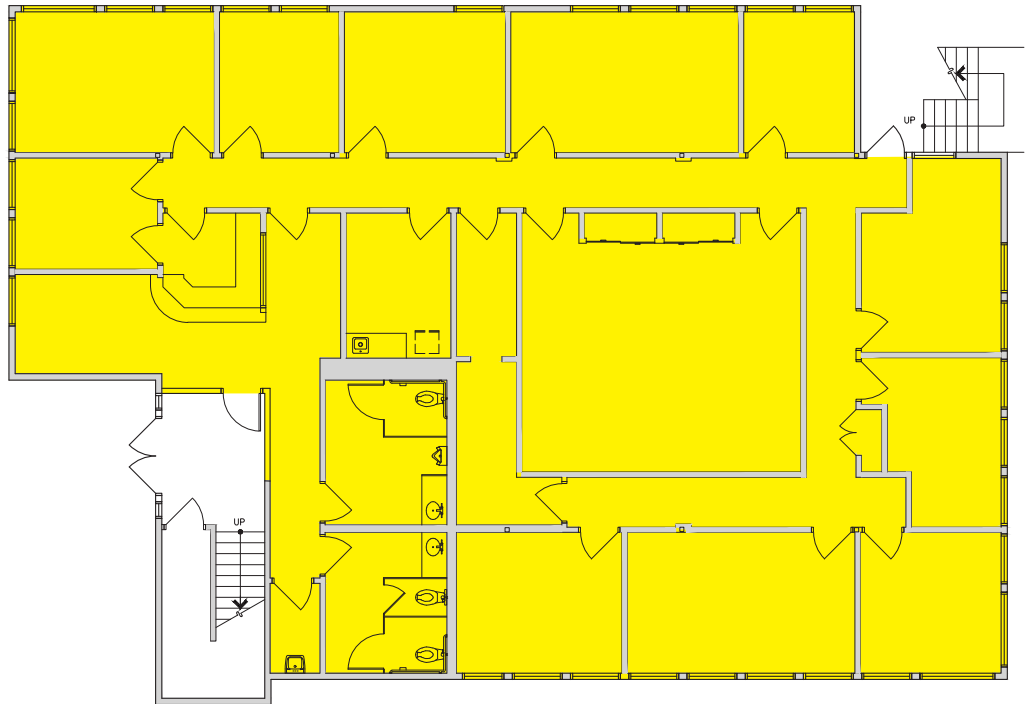
111 SE Everett Mall Way, Everett, WA 98208

**Two-Story Building Available | 5,594 SF**

**Second Floor: 1,768 SF**



**First Floor: 3,826 SF**



Rosen-Harbottle Commercial Real Estate | P.O. Box 5003 Bellevue, WA 98009-5003  
phone: (425) 454-3030 fax: (425) 454-6705 | [www.rosenharbottle.com](http://www.rosenharbottle.com)

The information provided has been obtained from sources believed reliable. While we do not doubt its accuracy, we have not verified and make no guarantee, warranty or representation about it. It is your sole responsibility to independently confirm its accuracy and completeness.



# PARK PLACE PROFESSIONAL PLAZA - Bldg F

111 SE Everett Mall Way, Everett, WA 98208

## ADDITIONAL PHOTOS

Monument Signage



Main Entrance



Reception



Abundant Natural Light



**TI Allowance Offered - Contact Light Agent**

Rosen-Harbottle Commercial Real Estate | P.O. Box 5003 Bellevue, WA 98009-5003  
phone: (425) 454-3030 fax: (425) 454-6705 | [www.rosenharbottle.com](http://www.rosenharbottle.com)

The information provided has been obtained from sources believed reliable. While we do not doubt its accuracy, we have not verified and make no guarantee, warranty or representation about it. It is your sole responsibility to independently confirm its accuracy and completeness.

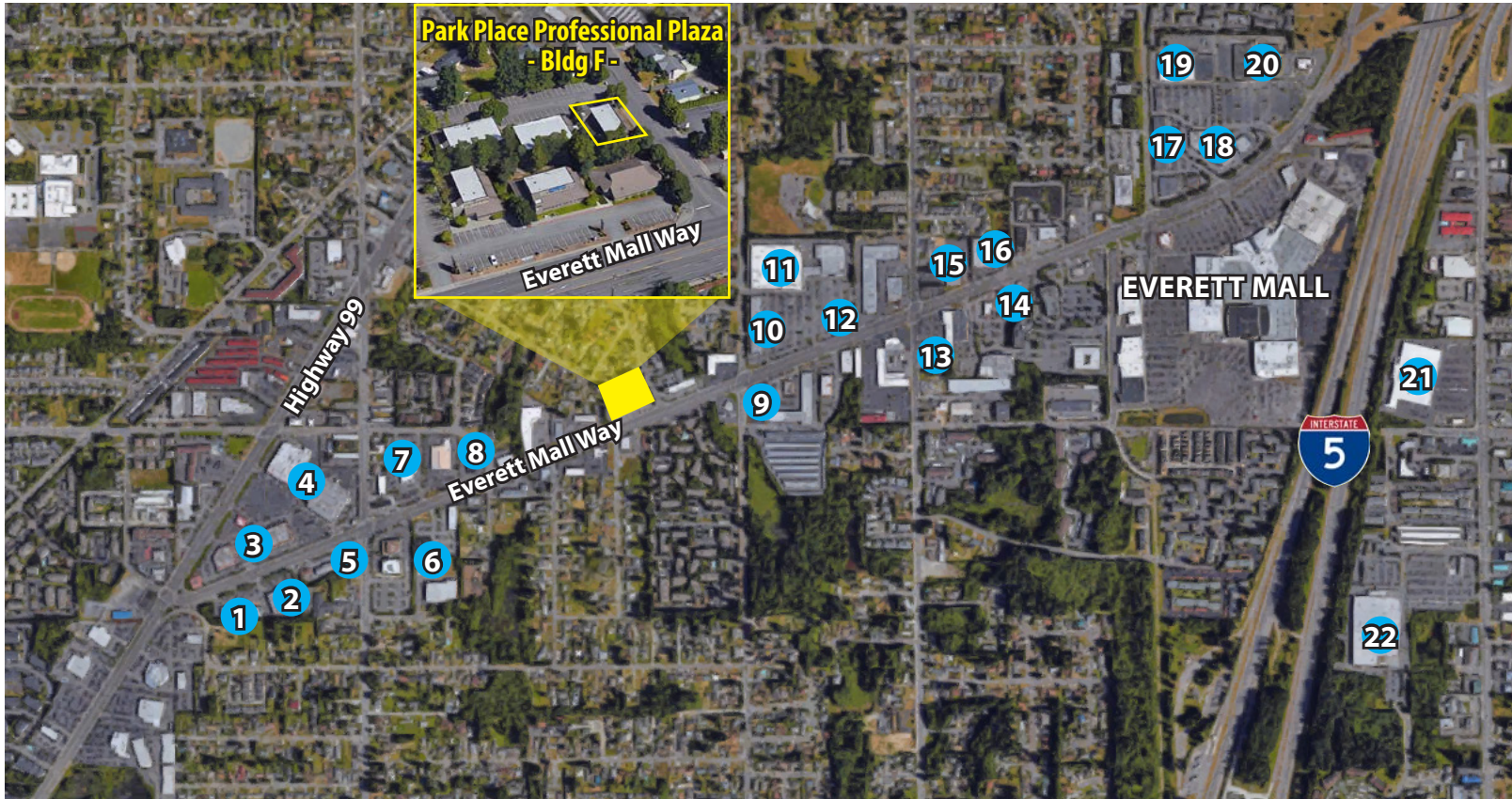




# PARK PLACE PROFESSIONAL PLAZA - Bldg F

111 SE Everett Mall Way, Everett, WA 98208

## RETAIL TRADE AREA AERIAL



- |                             |                        |                      |
|-----------------------------|------------------------|----------------------|
| 1. FedEx Office             | 9. Panera              | 17. PetCo            |
| 2. Furniture Factory Direct | 10. GameStop           | Mattress Depot USA   |
| 3. Outback Steakhouse       | Sally Beauty           | 18. Half Price Books |
| Great Clips                 | 11. Target             | Pier 1 Imports       |
| 4. Hobby Lobby              | 12. Starbucks          | Verizon              |
| Rite Aid                    | 13. Grocery Outlet     | 19. Toys 'R' Us      |
| Office Depot                | 14. T-Mobile           | Michaels             |
| 5. Car Toys                 | 15. Carpet Liquidators | 20. Walmart          |
| 6. Goodwill                 | 16. Trader Joe's       | 21. Costco           |
| 7. Kia                      | Dollar Tree            | 22. WinCo            |
| 8. Gerber Collision & Glass |                        |                      |

Rosen-Harbottle Commercial Real Estate | P.O. Box 5003 Bellevue, WA 98009-5003  
phone: (425) 454-3030 fax: (425) 454-6705 | [www.rosenharbottle.com](http://www.rosenharbottle.com)

The information provided has been obtained from sources believed reliable. While we do not doubt its accuracy, we have not verified and make no guarantee, warranty or representation about it. It is your sole responsibility to independently confirm its accuracy and completeness.

