

# RH North Creek Business Center

11810-11824 North Creek Parkway N, Bothell, WA 98011



Building 1



Building 2



Building 6

## OFFICE, TECH/ASSEMBLY & FLEX

Bldg-Suite	Square Feet	Available
2-100	6,000 SF - 46,205 SF	11/1/2015
Tech/assembly: heavy power, HVAC throughout & versatile loading. Contiguous with Building 4.		
4-100	9,800 SF - 21,500 SF	Now
Full building available; office build out. Contiguous with Building 2 for 46,205 SF total.		
1-101	3,975 SF-6,155 SF (3,975 SF ofc)	5/1/2015
Tech/assembly space with hood, plumbing. Office with POs, storage, break room, conference room.		
6-110	2,383 SF (1,800 SF ofc)	Now
Open office with multiple POs, direct access, small storage and GL door.		
1-205	1,132 SF	Now
Second floor office with 2 POs and open work space. Corner suite.		

### FEATURES:

- Class A Corporate Image
- Building Signage Available
- Prestigious North Creek Location
- Nearby Amenities: Restaurants, Retail, Childcare, Hotel, & Sports Fields
- Quick Access to I-405, SR-522 Downtown Bothell



For more information, contact:

ROSEN~HARBOTTLE  
COMMERCIAL REAL ESTATE

**Brian Stewart**

(425) 289-2222

brians@rosenharbottle.com

**Caleb Farnworth, CCIM**

(425) 289-2235

calebf@rosenharbottle.com

www.rosenharbottle.com

Rosen~Harbottle Commercial Real Estate | P.O. Box 5003 Bellevue, WA 98009-5003  
phone: (425) 454-3030 fax: (425) 454-6705 | www.rosenharbottle.com

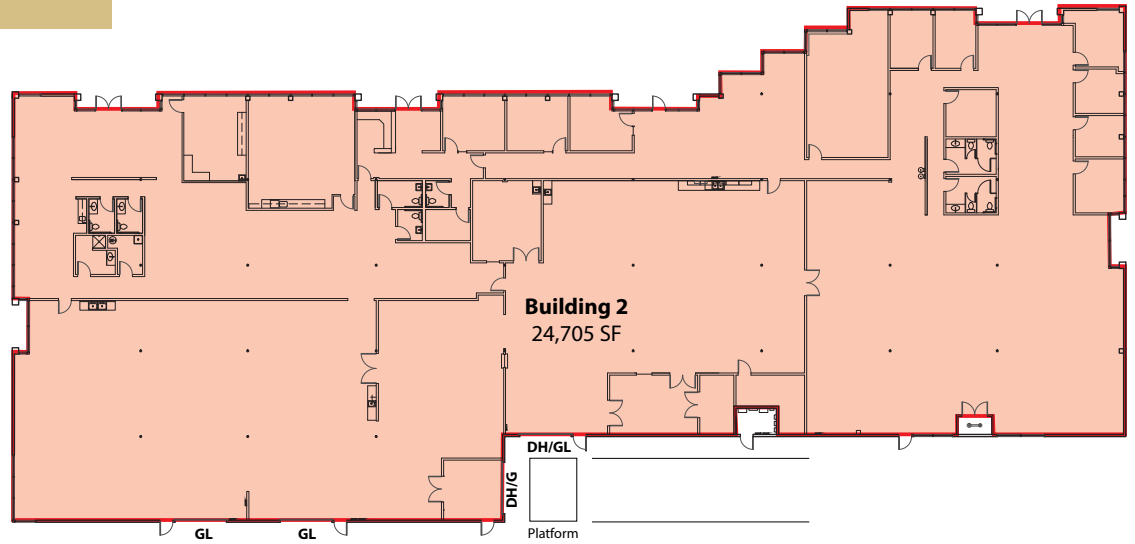
The information provided has been obtained from sources believed reliable. While we do not doubt its accuracy, we have not verified and make no guarantee, warranty or representation about it. It is your sole responsibility to independently confirm its accuracy and completeness.

# RH North Creek Business Center

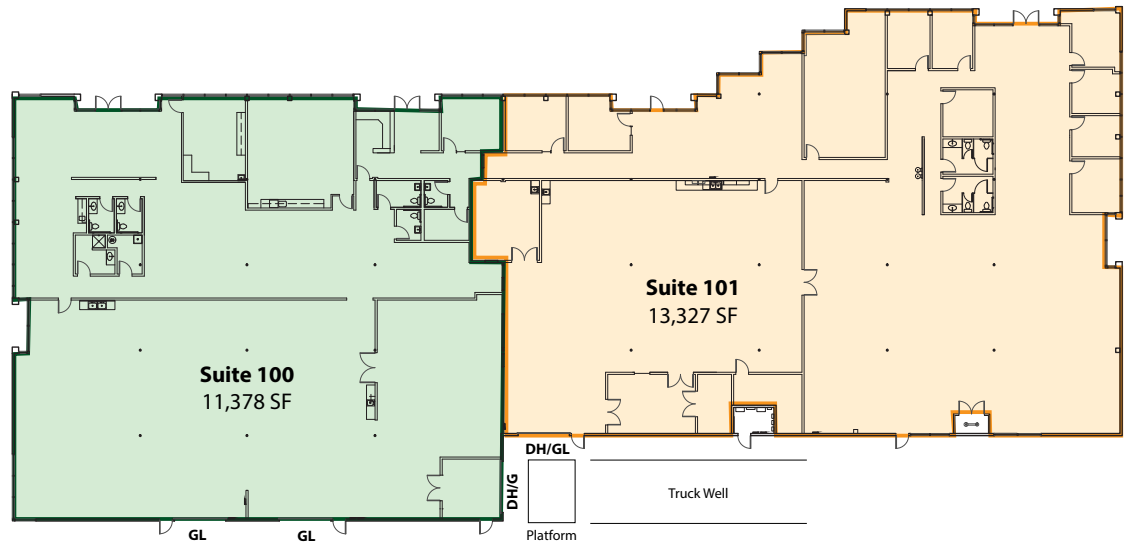
11810-11824 North Creek Parkway N, Bothell, WA 98011

## Building 2

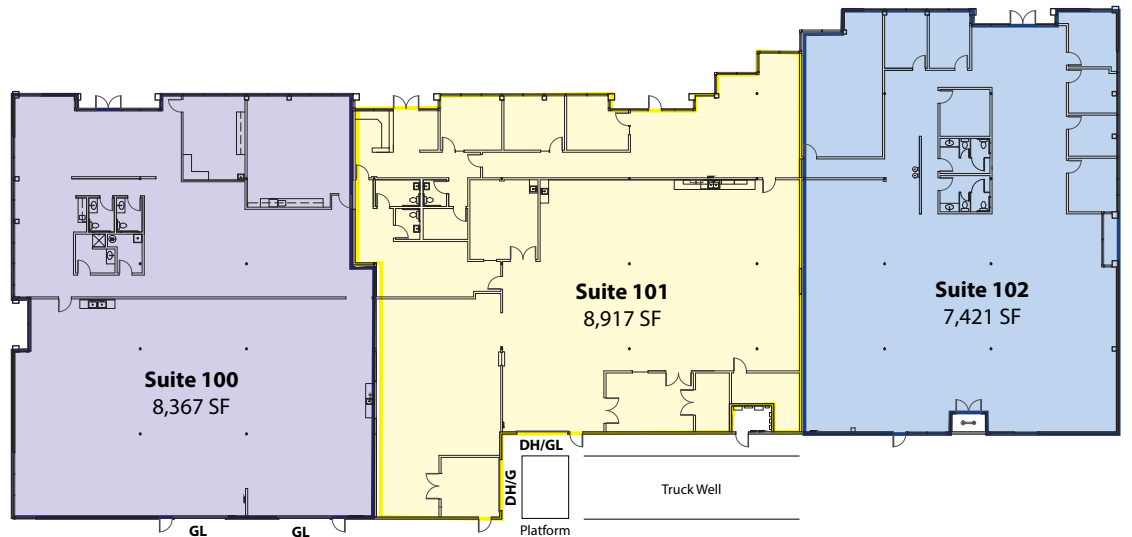
### EXISTING



### OPTION A



### OPTION B



Rosen~Harbottle Commercial Real Estate | P.O. Box 5003 Bellevue, WA 98009-5003  
phone: (425) 454-3030 fax: (425) 454-6705 | [www.rosenharbottle.com](http://www.rosenharbottle.com)

The information provided has been obtained from sources believed reliable. While we do not doubt its accuracy, we have not verified and make no guarantee, warranty or representation about it. It is your sole responsibility to independently confirm its accuracy and completeness.

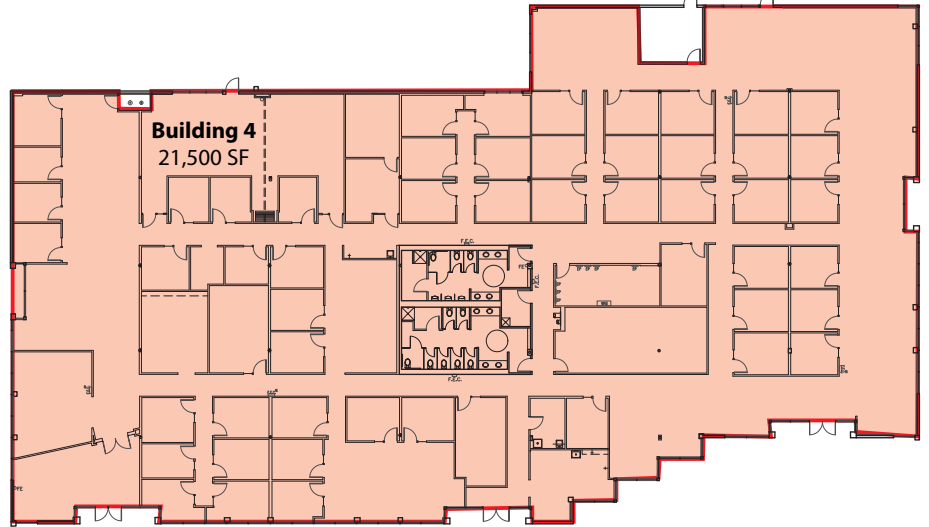


# RH North Creek Business Center

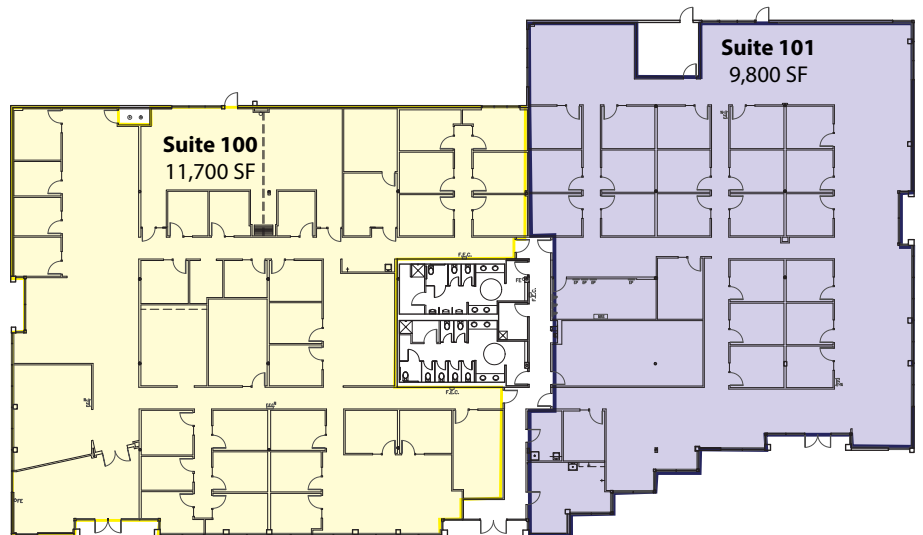
11810-11824 North Creek Parkway N, Bothell, WA 98011

## Building 4

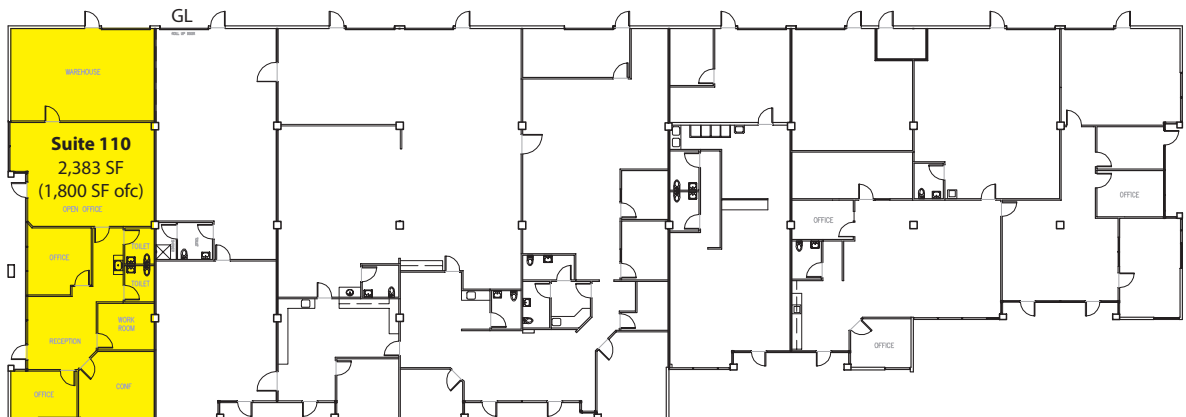
EXISTING



OPTION A



## Building 6



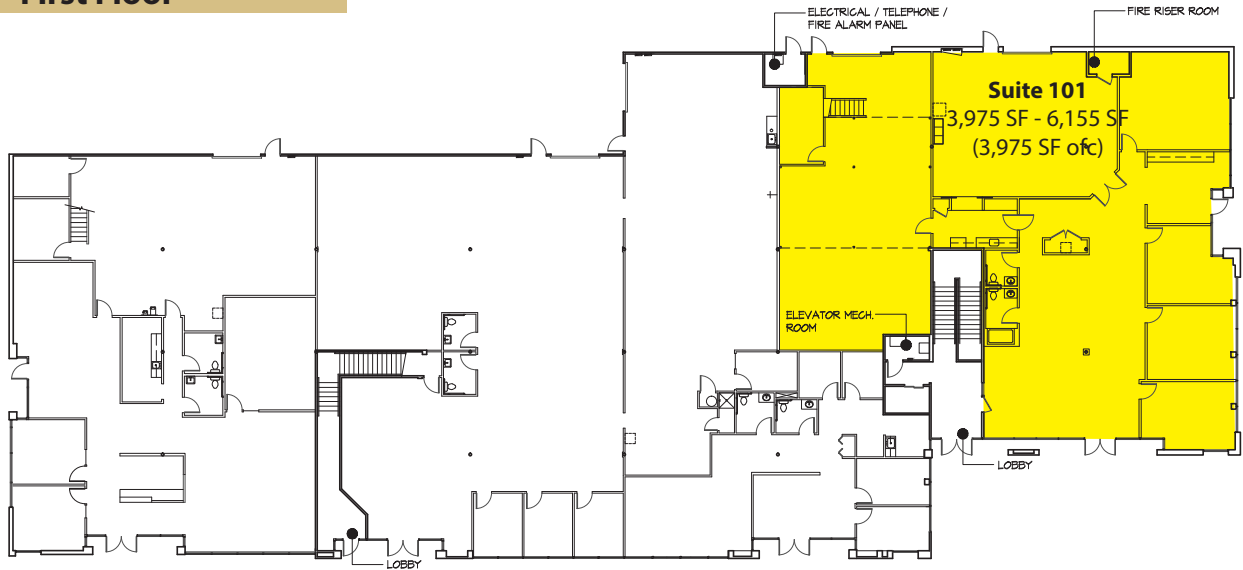
Rosen~Harbottle Commercial Real Estate | P.O. Box 5003 Bellevue, WA 98009-5003  
phone: (425) 454-3030 fax: (425) 454-6705 | [www.rosenharbottle.com](http://www.rosenharbottle.com)

The information provided has been obtained from sources believed reliable. While we do not doubt its accuracy, we have not verified and make no guarantee, warranty or representation about it. It is your sole responsibility to independently confirm its accuracy and completeness.

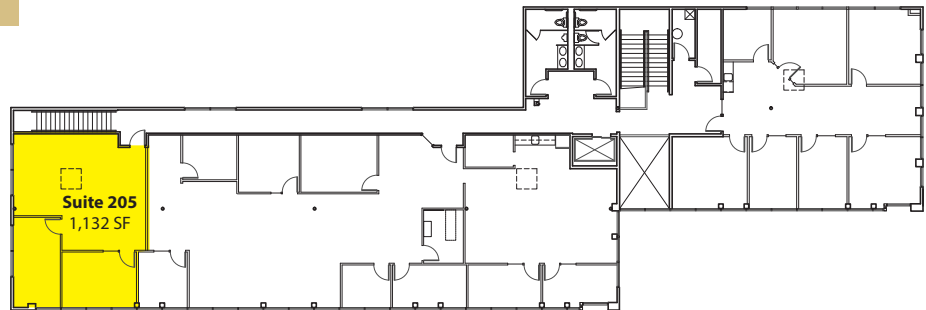
# RH North Creek Business Center

11810-11824 North Creek Parkway N, Bothell, WA 98011

## Building 1 - First Floor



## Building 1 - Second Floor



## Site Plan



Rosen~Harbottle Commercial Real Estate | P.O. Box 5003 Bellevue, WA 98009-5003  
phone: (425) 454-3030 fax: (425) 454-6705 | [www.rosenharbottle.com](http://www.rosenharbottle.com)

The information provided has been obtained from sources believed reliable. While we do not doubt its accuracy, we have not verified and make no guarantee, warranty or representation about it. It is your sole responsibility to independently confirm its accuracy and completeness.



# RH North Creek Business Center

11810-11824 North Creek Parkway N, Bothell, WA 98011



**RH North Creek  
Business Center**

## Corporate Neighbors

- |                            |                               |                        |
|----------------------------|-------------------------------|------------------------|
| 1. AT&T                    | 6. AT&T                       | 11. Talentwise         |
| 2. General Dynamics        | 7. United Healthcare Services | 12. Tetra Tech         |
| 3. Valeant Pharmaceuticals | 8. Progressive, Banner Bank   | 13. T-Mobile           |
| 4. AMEC                    | 9. Vertafore                  | 14. Puget Sound Energy |
| 5. Google                  | 10. State Farm                | 15. HUB International  |

Rosen~Harbottle Commercial Real Estate | P.O. Box 5003 Bellevue, WA 98009-5003  
phone: (425) 454-3030 fax: (425) 454-6705 | [www.rosenharbottle.com](http://www.rosenharbottle.com)

The information provided has been obtained from sources believed reliable. While we do not doubt its accuracy, we have not verified and make no guarantee, warranty or representation about it. It is your sole responsibility to independently confirm its accuracy and completeness.