

# Park Heights Building

1800 112<sup>TH</sup> AVENUE NE, BELLEVUE, WA 98004

**FOR  
LEASE**



ROSEN | HARBOTTLE  
**RH**

For more information, contact:

**ROSEN~HARBOTTLE  
COMMERCIAL REAL ESTATE**

**Grant Rubenstein**  
(425) 289-2220  
grant@rosenharbottle.com

www.rosenharbottle.com

**2,730 SF & 2,807 SF Available**

**\$27.50/SF, Full-Service**

## **FEATURES:**

- Highly Desirable 112<sup>th</sup> Avenue Location
- Close-In Bellevue Location
- Free Surface Parking
- Across from Hidden Valley Park
- Extensive Glass Line

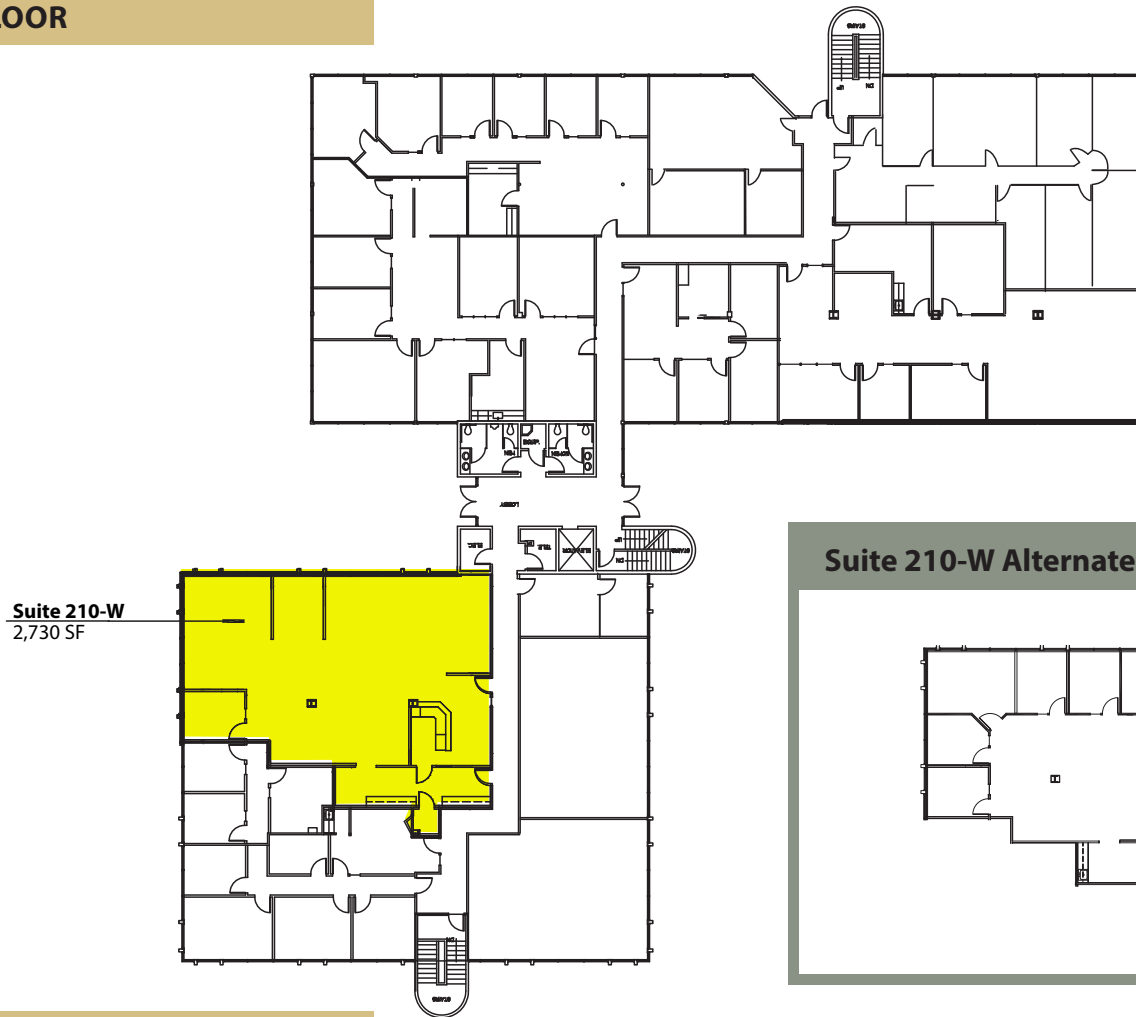
Rosen~Harbottle Commercial Real Estate | P.O. Box 5003 Bellevue, WA 98009-5003  
phone: (425) 454-3030 fax: (425) 454-6705 | www.rosenharbottle.com

The information provided has been obtained from sources believed reliable. While we do not doubt its accuracy, we have not verified and make no guarantee, warranty or representation about it. It is your sole responsibility to independently confirm its accuracy and completeness.

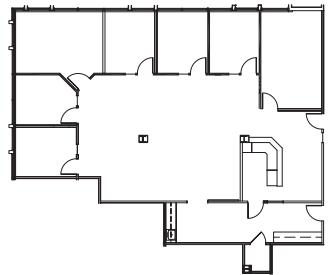
# Park Heights Building

1800 112<sup>TH</sup> AVENUE NE, BELLEVUE, WA 98004

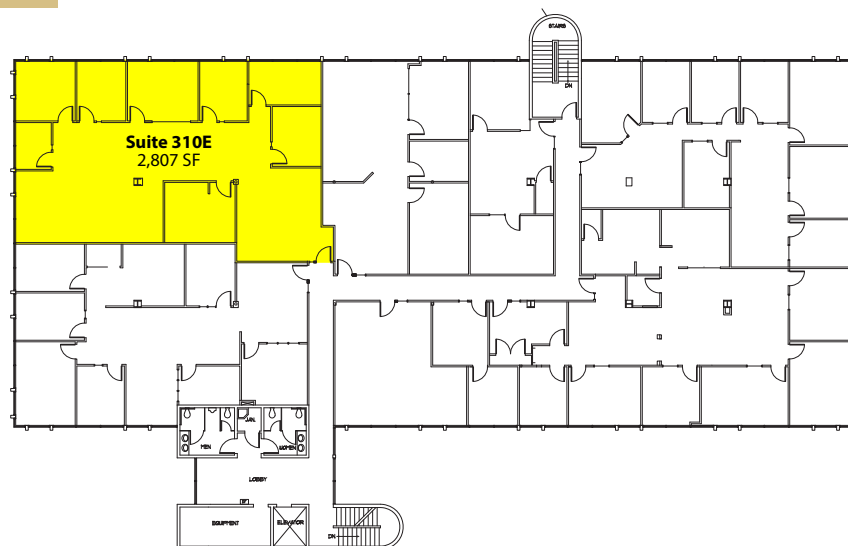
## SECOND FLOOR



### Suite 210-W Alternate Layout



## THIRD FLOOR



Rosen~Harbottle Commercial Real Estate | P.O. Box 5003 Bellevue, WA 98009-5003  
phone: (425) 454-3030 fax: (425) 454-6705 | [www.rosenharbottle.com](http://www.rosenharbottle.com)

The information provided has been obtained from sources believed reliable. While we do not doubt its accuracy, we have not verified and make no guarantee, warranty or representation about it. It is your sole responsibility to independently confirm its accuracy and completeness.

# Park Heights Building

1800 112<sup>TH</sup> AVENUE NE, BELLEVUE, WA 98004



For more information, contact:

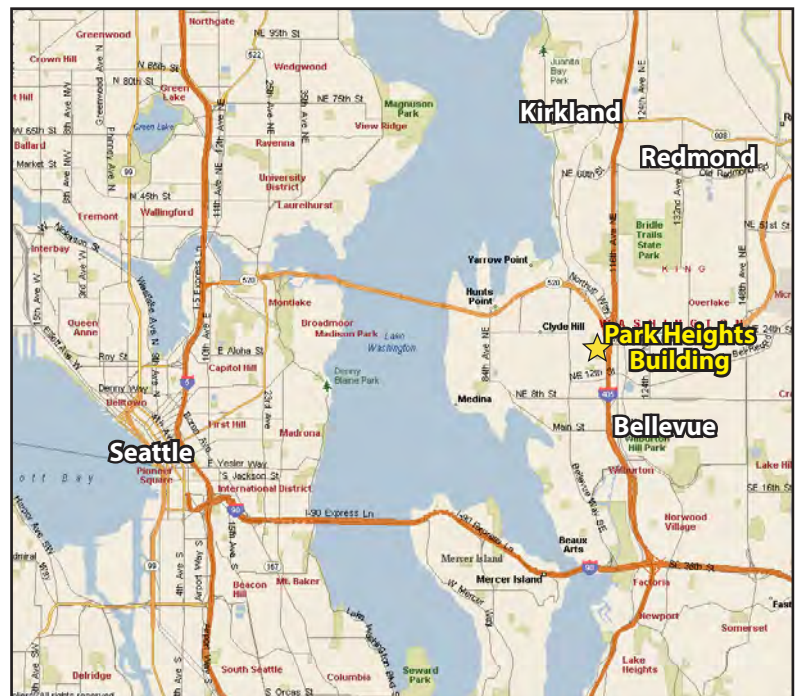
**ROSEN~HARBOTTLE  
COMMERCIAL REAL ESTATE**

**Grant Rubenstein**

(425) 289-2220

[grant@rosenharbottle.com](mailto:grant@rosenharbottle.com)

[www.rosenharbottle.com](http://www.rosenharbottle.com)



Rosen~Harbottle Commercial Real Estate | P.O. Box 5003 Bellevue, WA 98009-5003  
phone: (425) 454-3030 fax: (425) 454-6705 | [www.rosenharbottle.com](http://www.rosenharbottle.com)

The information provided has been obtained from sources believed reliable. While we do not doubt its accuracy, we have not verified and make no guarantee, warranty or representation about it. It is your sole responsibility to independently confirm its accuracy and completeness.