

LAKE CITY WAY RETAIL

8051 Lake City, Seattle, WA 98115

CREATIVE RETAIL/OFFICE ENDCAP SPACE

2,231 SF Available

\$25.00/SF, Modified Gross

PROPERTY DETAILS:

- Open floor plan layout
- 2 restrooms
- Natural light
- Free street parking + 3 loading zone areas
- 30,000+ Cars per day on 15th Avenue NE
- Quick access to I-5

To Schedule a tour/Request Info, contact:

Grant Rubenstein

425.289.2220

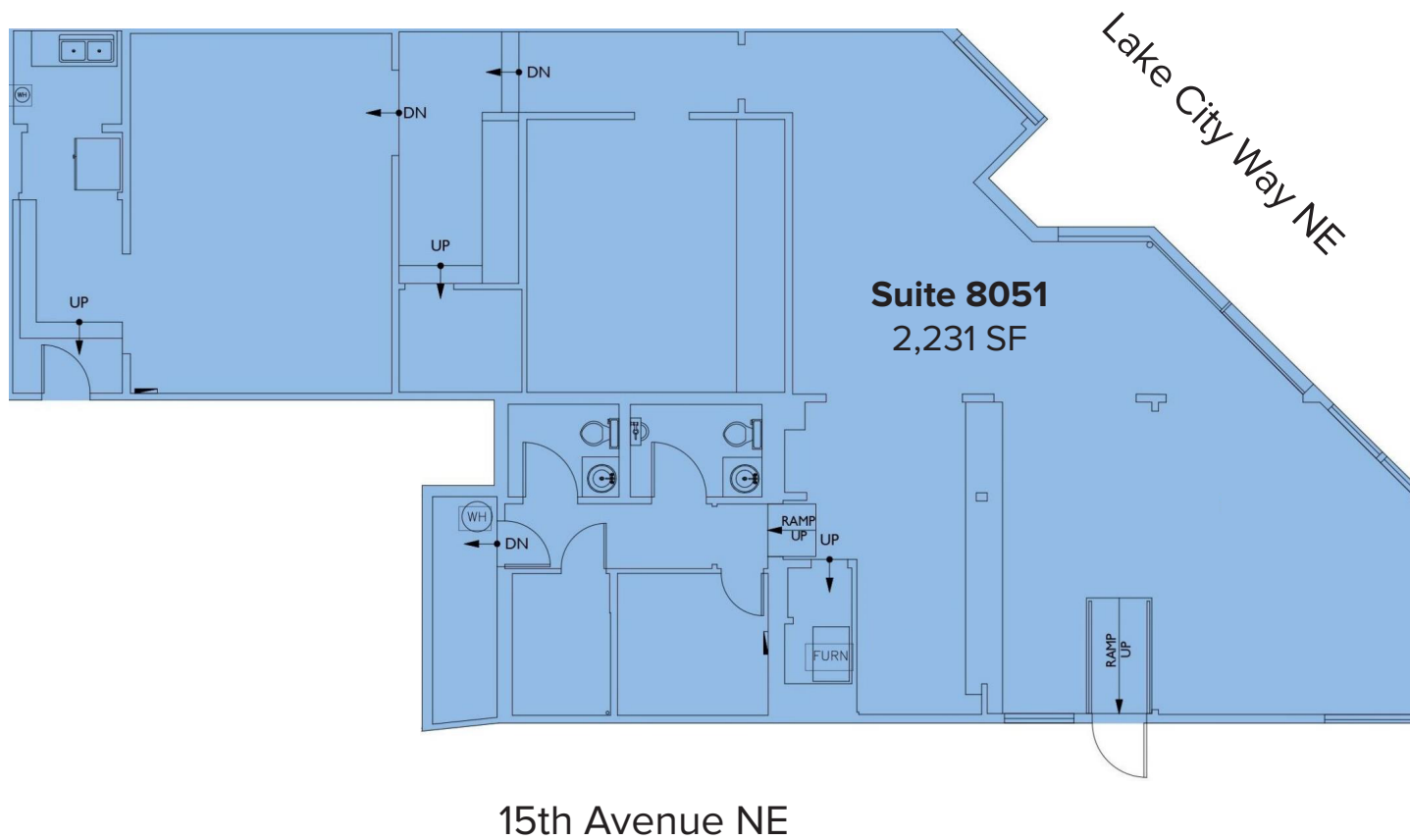
grant@rosenharbottle.com



The information provided herein has been obtained from sources believed to be reliable, but no representation or warranty, express or implied, is made with respect to the accuracy or completeness of any such information. Each prospective buyer or tenant should independently investigate, evaluate and verify all information provided herein and any other matters deemed material. Please consult your attorney, tax advisor or other professional advisor. The terms of sale or lease set forth herein are subject to change or withdrawal at any time and without notice.



FLOOR PLAN



The information provided herein has been obtained from sources believed to be reliable, but no representation or warranty, express or implied, is made with respect to the accuracy or completeness of any such information. Each prospective buyer or tenant should independently investigate, evaluate and verify all information provided herein and any other matters deemed material. Please consult your attorney, tax advisor or other professional advisor. The terms of sale or lease set forth herein are subject to change or withdrawal at any time and without notice.

LOCATION MAP

