

# VACANCY AT YARROW BAY'S VILLAGE OFFICE PARK



**859 SF Available**

**\$29.50 / SF, Gross**

## **SUITE FEATURES:**

- 2 Private Offices, Kitchenette & Open Area
- First Floor Suite
- On-Site Storage Available
  - Fully Secured & Temp Controlled

## **LOCATION FEATURES:**

- Immediate Access to SR-520 and I-405
- Adjacent to Kirkland Park & Ride, Major Bus Terminal & Cross Kirkland Corridor
- 5 Minutes to Downtown Bellevue or Kirkland & 13 Minutes to Downtown Seattle
- Tranquil Park-Like Setting
- Amenities Nearby Include Big Fish Grill, Dixie's BBQ, Burgermaster & Daycare

For more information, contact:

**ROSEN~HARBOTTLE COMMERCIAL REAL ESTATE**

**Caleb Farnworth, CCIM**

(425) 289-2235

[calebf@rosenharbottle.com](mailto:calebf@rosenharbottle.com)

[www.rosenharbottle.com](http://www.rosenharbottle.com)

Rosen~Harbottle Commercial Real Estate P.O. Box 5003 Bellevue, WA 98009-5003

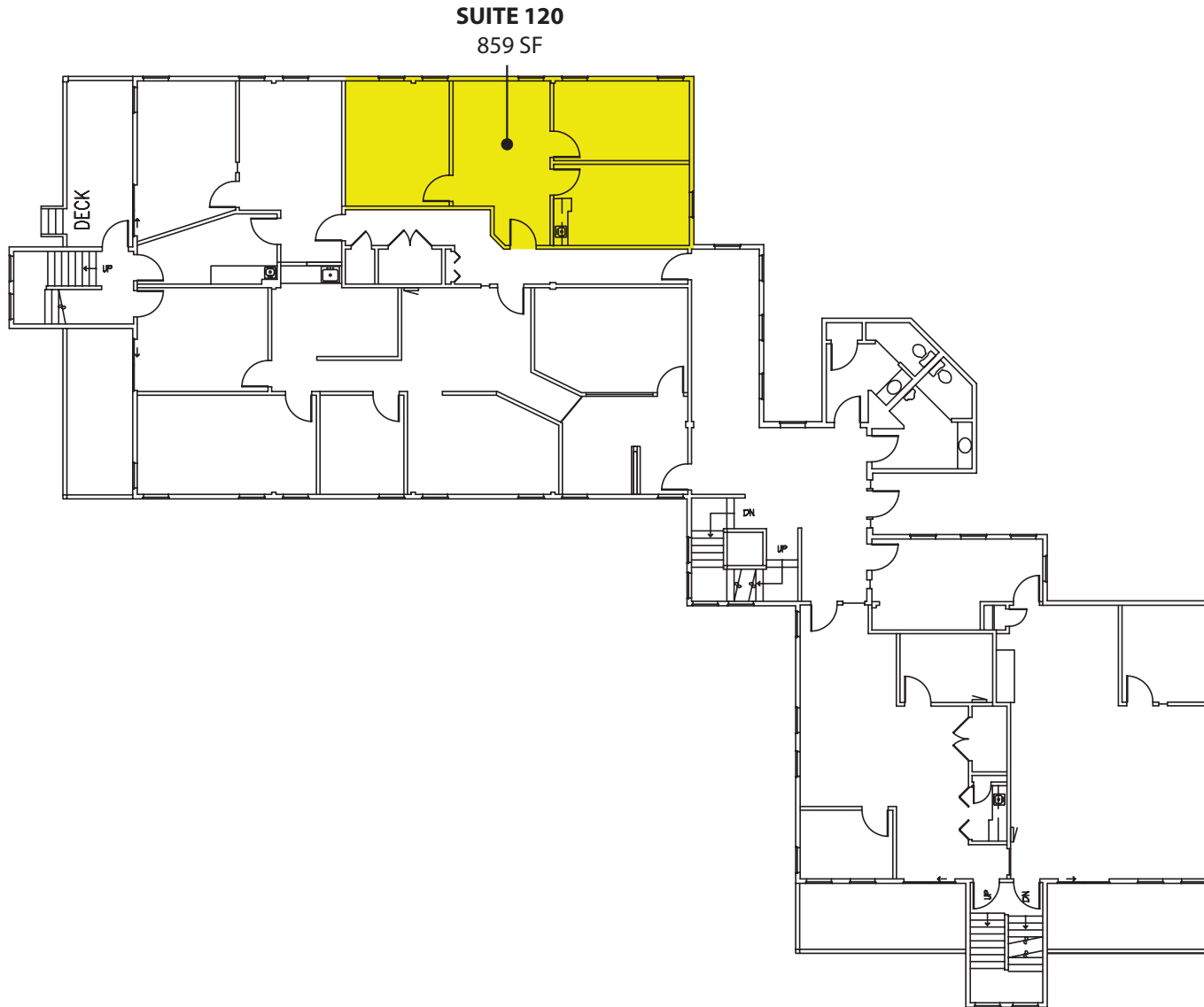
phone: (425) 454-3030 fax: (425) 454-6705 [www.rosenharbottle.com](http://www.rosenharbottle.com)

The information provided has been obtained from sources believed reliable. While we do not doubt its accuracy, we have not verified and make no guarantee, warranty or representation about it. It is your sole responsibility to independently confirm its accuracy and completeness.

# VILLAGE OFFICE PARK

3805 108th Avenue NE, Bellevue, WA 98004

## AVAILABLE SPACE - First Floor



Rosen~Harbottle Commercial Real Estate P.O. Box 5003 Bellevue, WA 98009-5003

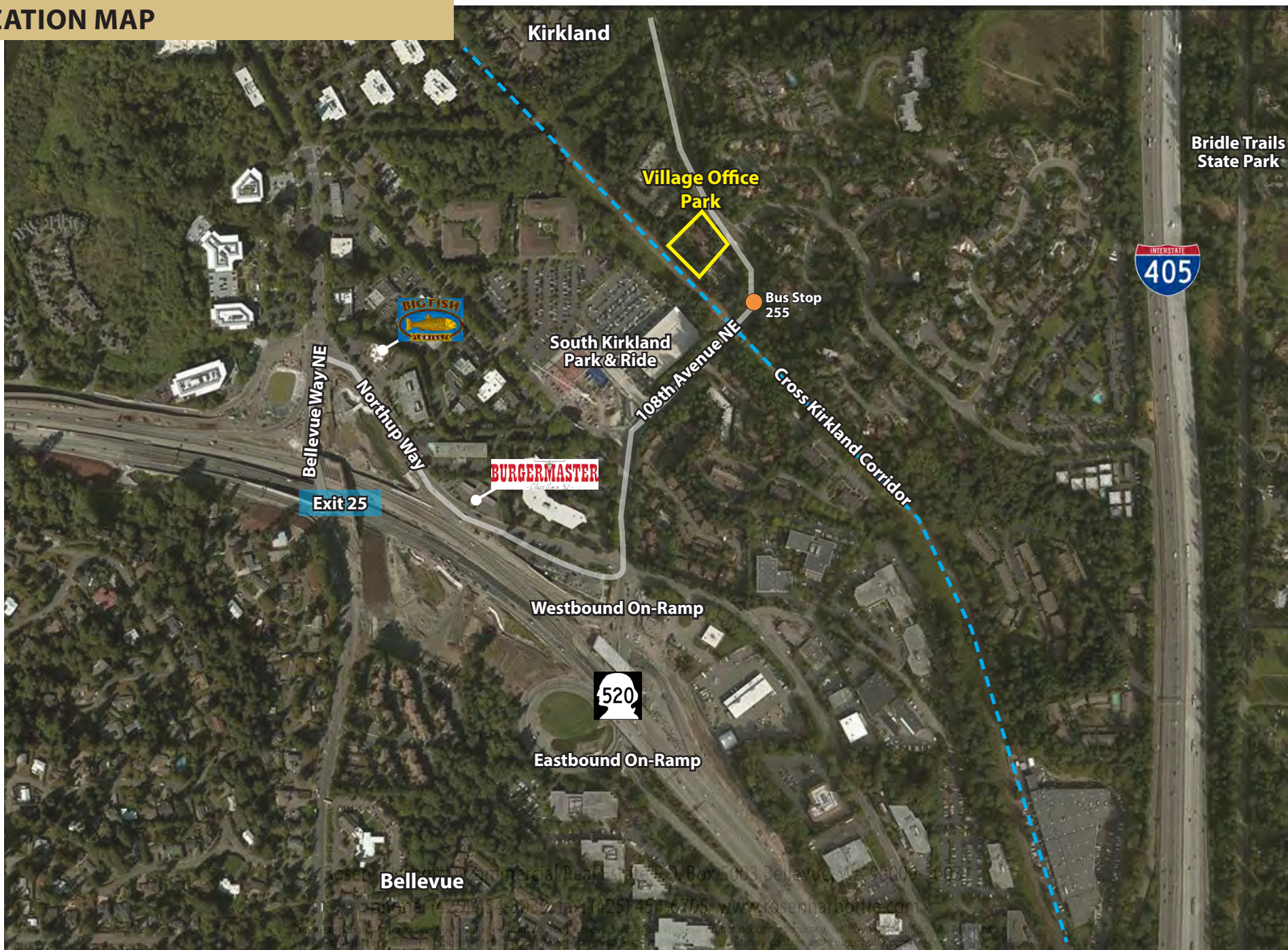
phone: (425) 454-3030 fax: (425) 454-6705 [www.rosenharbottle.com](http://www.rosenharbottle.com)

The information provided has been obtained from sources believed reliable. While we do not doubt its accuracy, we have not verified and make no guarantee, warranty or representation about it. It is your sole responsibility to independently confirm its accuracy and completeness.

# VILLAGE OFFICE PARK

3805 108th Avenue NE, Bellevue, WA 98004

## LOCATION MAP



Rosen Commercial Real Estate, Inc. Box 5003 Bellevue, WA 98009-3003  
Phone: (425) 454-3939 Fax: (425) 454-6705 www.rosenharbottle.com

The information on this page has been obtained from sources believed to be reliable. While we do not guarantee accuracy, we have made every effort to ensure the information is as accurate as possible. All rights reserved. © 2014 Rosen Commercial Real Estate, Inc.