

NORTHCREEK BUSINESS PARK

17901 Bothell-Everett Highway, Bothell, WA 98012



HIGH-VISIBILITY RETAIL/FLEX SPACE

1,125 - 1,641 SF Available

FEATURES:

- Bothell-Everett Highway Frontage
- Monument & Pylon Signage Available
- 31,000 Cars per Day on Bothell-Everett Hwy
- Ample Glass
- Grade-Level Loading
- Quality Concrete-Tilt



For more information, contact:

**ROSEN~HARBOTTLE
COMMERCIAL REAL ESTATE**

Brian Stewart

(425) 289-2222

brians@rosenharbottle.com

Connor Feuerberg

(425) 279-7943

connor@rosenharbottle.com

www.rosenharbottle.com

Rosen~Harbottle Commercial Real Estate | P.O. Box 5003 Bellevue, WA 98009-5003
phone: (425) 454-3030 fax: (425) 454-6705 | www.rosenharbottle.com

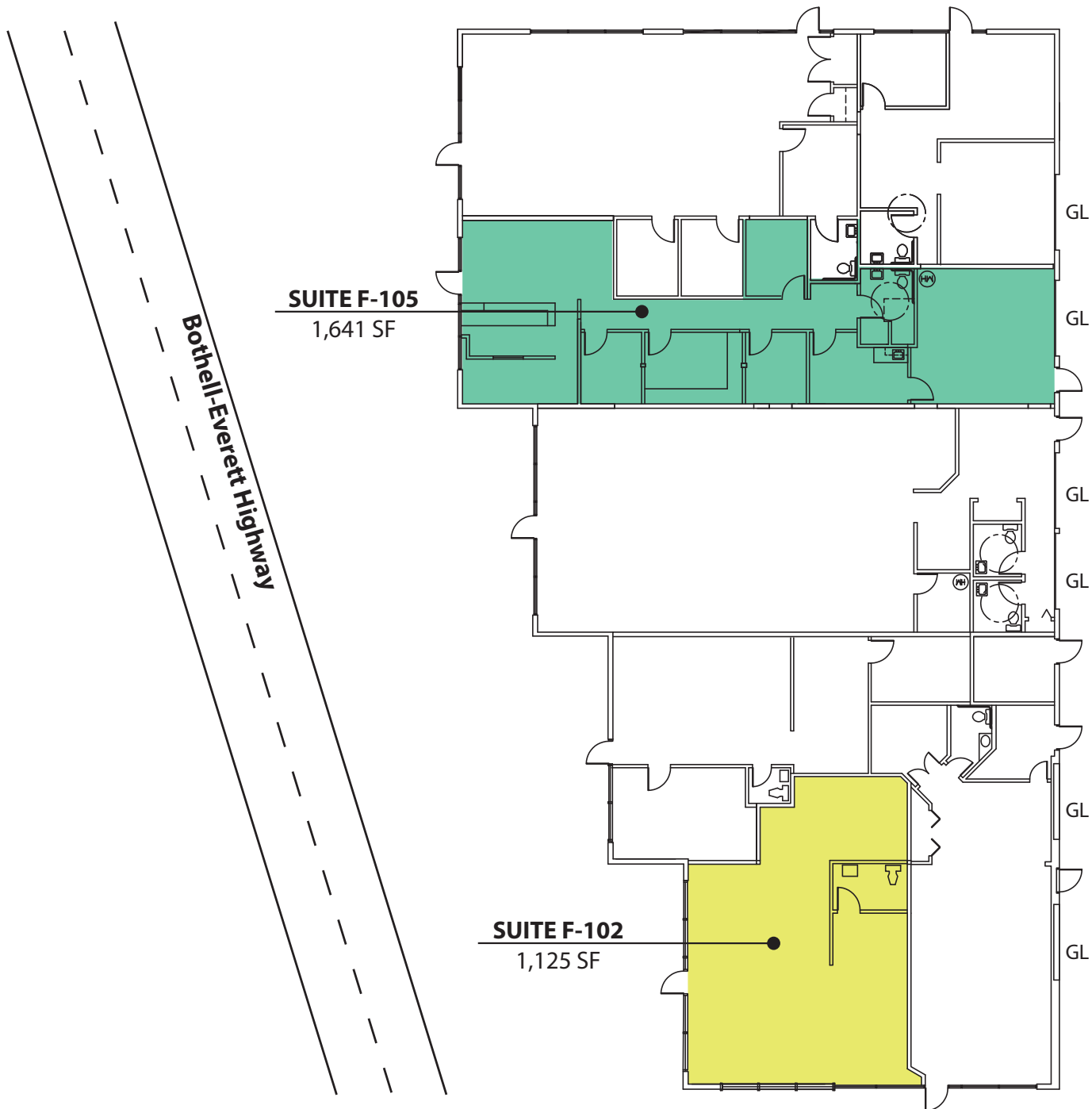
The information provided has been obtained from sources believed reliable. While we do not doubt its accuracy, we have not verified and make no guarantee, warranty or representation about it. It is your sole responsibility to independently confirm its accuracy and completeness.

NORTHCREEK BUSINESS PARK

17901 Bothell-Everett Highway, Bothell, WA 98012

Available Space

Suite	Square Footage	Rent	Available
F-105	1,641 SF	\$21.00/SF, NNN	1/1/2019
F-102	1,125 SF	\$21.00/SF, NNN	3/1/2019



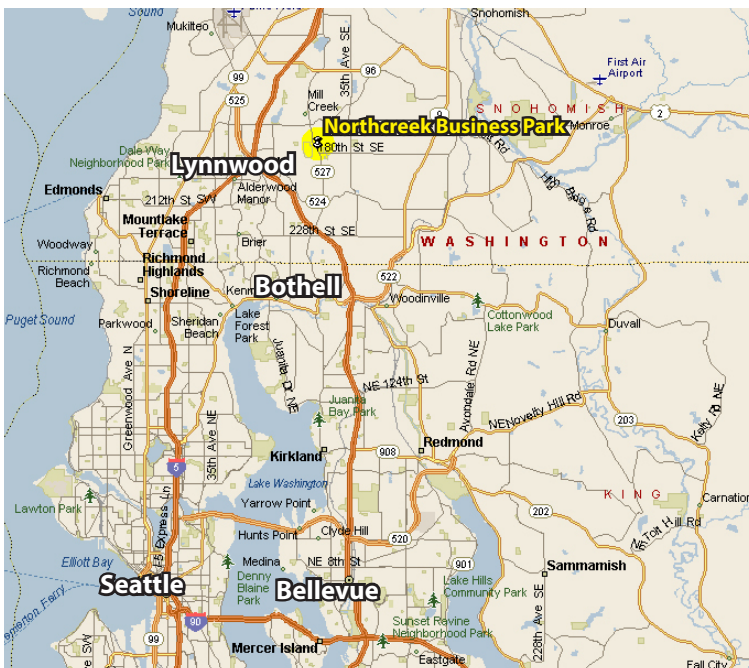
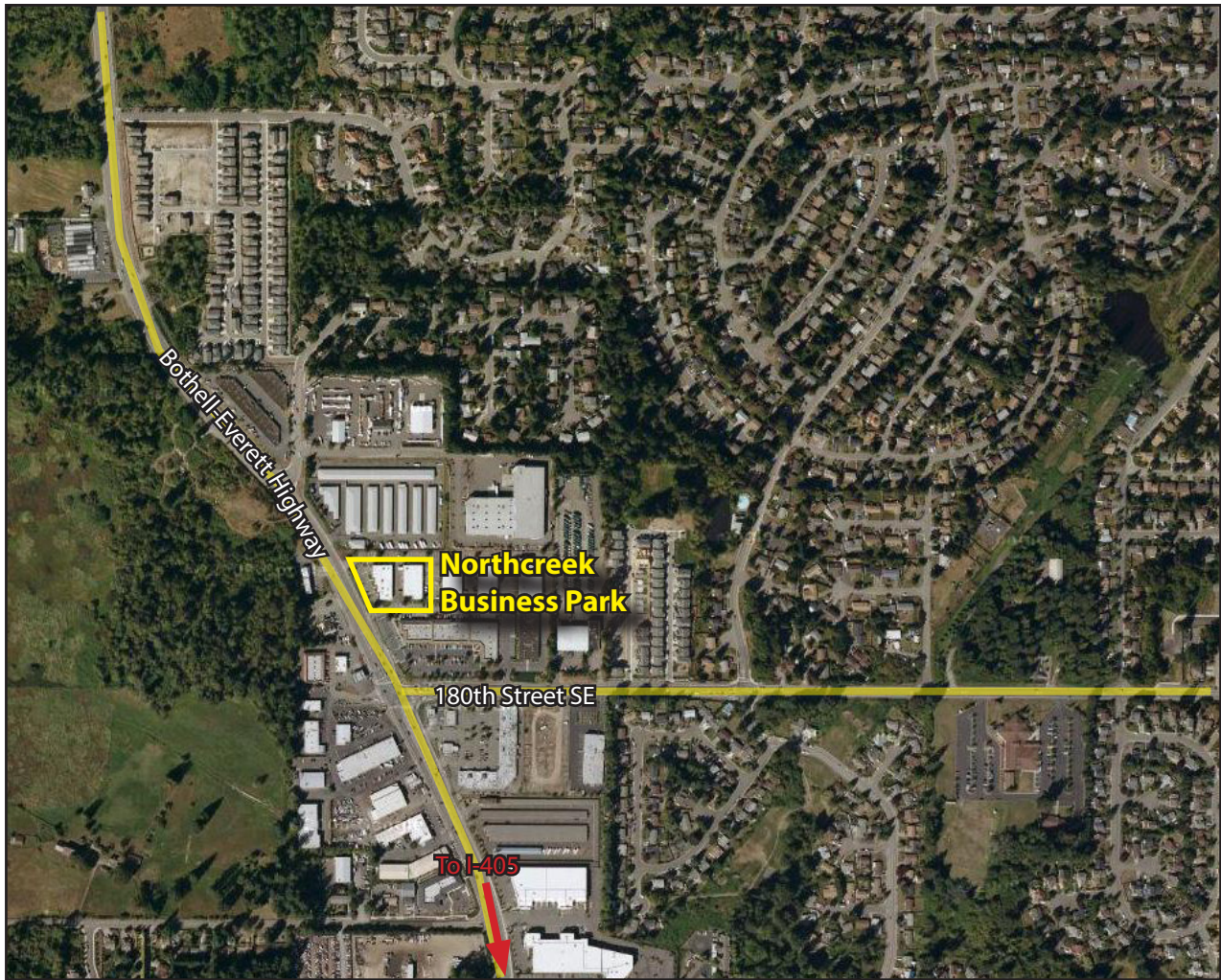
Rosen~Harbottle Commercial Real Estate | P.O. Box 5003 Bellevue, WA 98009-5003
phone: (425) 454-3030 fax: (425) 454-6705 | www.rosenharbottle.com

The information provided has been obtained from sources believed reliable. While we do not doubt its accuracy, we have not verified and make no guarantee, warranty or representation about it. It is your sole responsibility to independently confirm its accuracy and completeness.



NORTHCREEK BUSINESS PARK

17901 Bothell-Everett Highway, Bothell, WA 98012



For more information, contact:

ROSEN~HARBOTTLE COMMERCIAL REAL ESTATE

Brian Stewart
(425) 289-2222

brians@rosenharbottle.com

Connor Feuerberg
(425) 279-7943

connor@rosenharbottle.com

www.rosenharbottle.com

Rosen~Harbottle Commercial Real Estate | P.O. Box 5003 Bellevue, WA 98009-5003
phone: (425) 454-3030 fax: (425) 454-6705 | www.rosenharbottle.com

The information provided has been obtained from sources believed reliable. While we do not doubt its accuracy, we have not verified and make no guarantee, warranty or representation about it. It is your sole responsibility to independently confirm its accuracy and completeness.