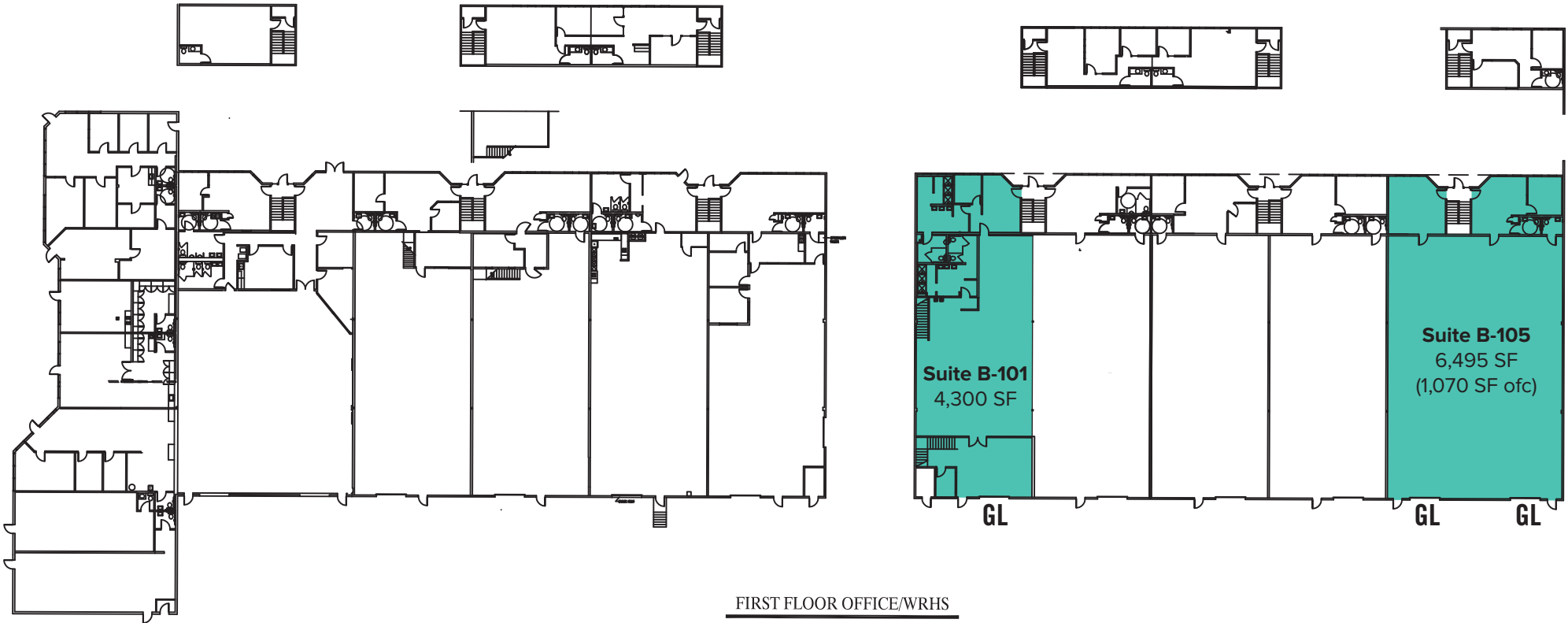


SECOND FLOOR OFFICES



FIRST FLOOR OFFICE/WRHS

SITE PLAN

NOT TO SCALE

LYNNWOOD EAST BUSINESS PARK

2027 - 2031 196th STREET S.W.

LYNNWOOD, WA



ROSEN HARBOTTLE
COMMERCIAL REAL ESTATE