

**OFFICE LEASE
AVAILABLE**



MEADOW CREEK OFFICE PARK

22500 - 22619 SE 64th Place | Issaquah, WA

Brian Stewart

425.289.2222

brians@rosenharbottle.com

425.454.3030
rosenharbottle.com

PO Box 5003
Bellevue, WA 98009 - 5003





ISSAQUAH CLASS A OFFICE SPACES AVAILABLE

716 SF - 1,852 SF Available

OFFICE PARK DETAILS:

- Minutes from Costco Headquarters
- Amazing Location off I-90 at Front St/E Lake Sammamish Pkwy
- Nearby Amenities Include Retailers, Grocers, Restaurants, Hospital & Parks
- Park-Like, Campus Setting with Free Surface Parking

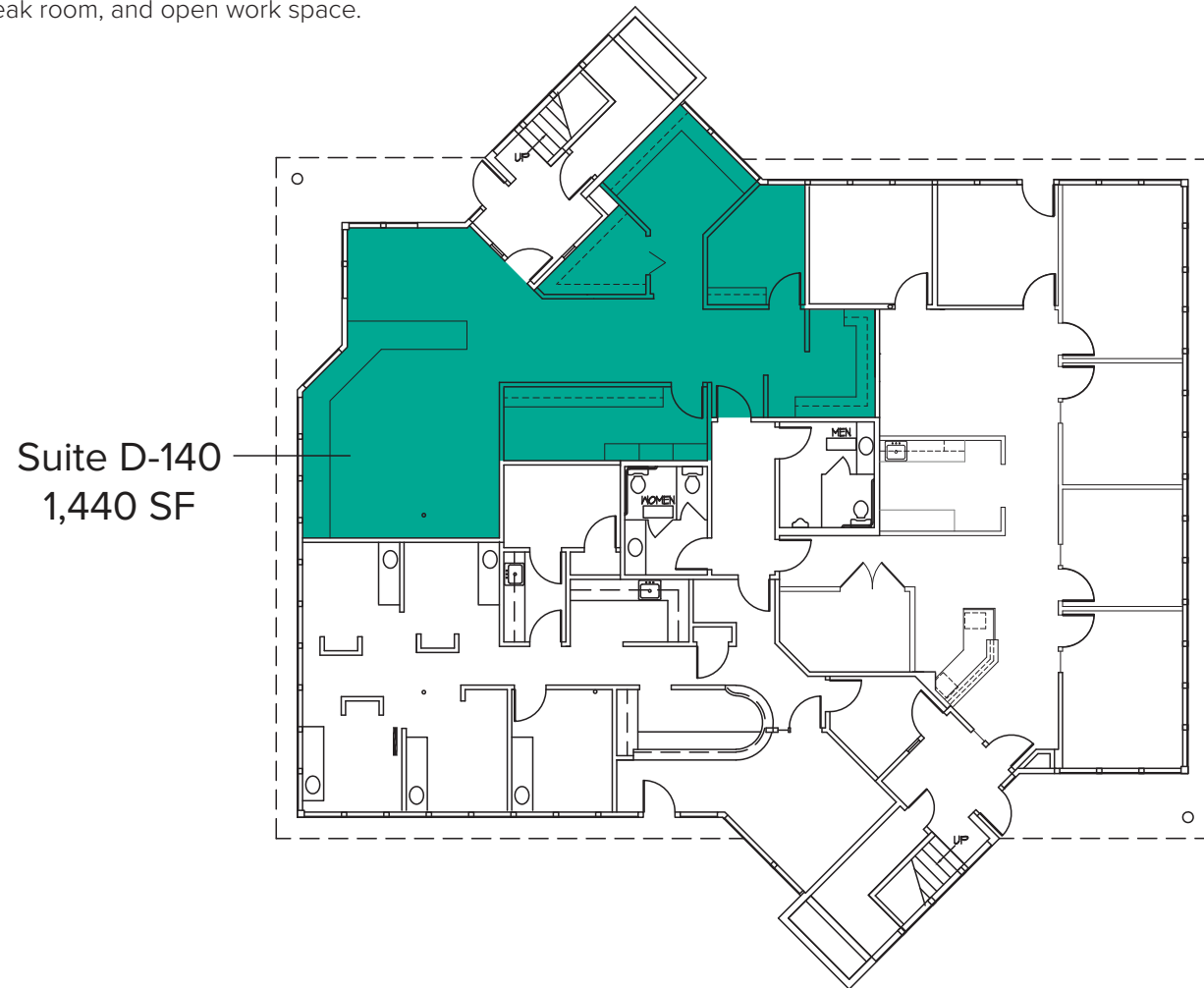
The information provided herein has been obtained from sources believed to be reliable, but no representation or warranty, express or implied, is made with respect to the accuracy or completeness of any such information. Each prospective buyer or tenant should independently investigate, evaluate and verify all information provided herein and any other matters deemed material. Please consult your attorney, tax advisor or other professional advisor. The terms of sale or lease set forth herein are subject to change or withdrawal at any time and without notice.

BUILDING D (22526)

FIRST LEVEL FLOOR PLAN

Suite	Square Feet	Rate
D-140	1,440 SF	\$28.00/SF, NNN

First floor office with 1 private room, reception area, break room, and open work space.
Available Now.



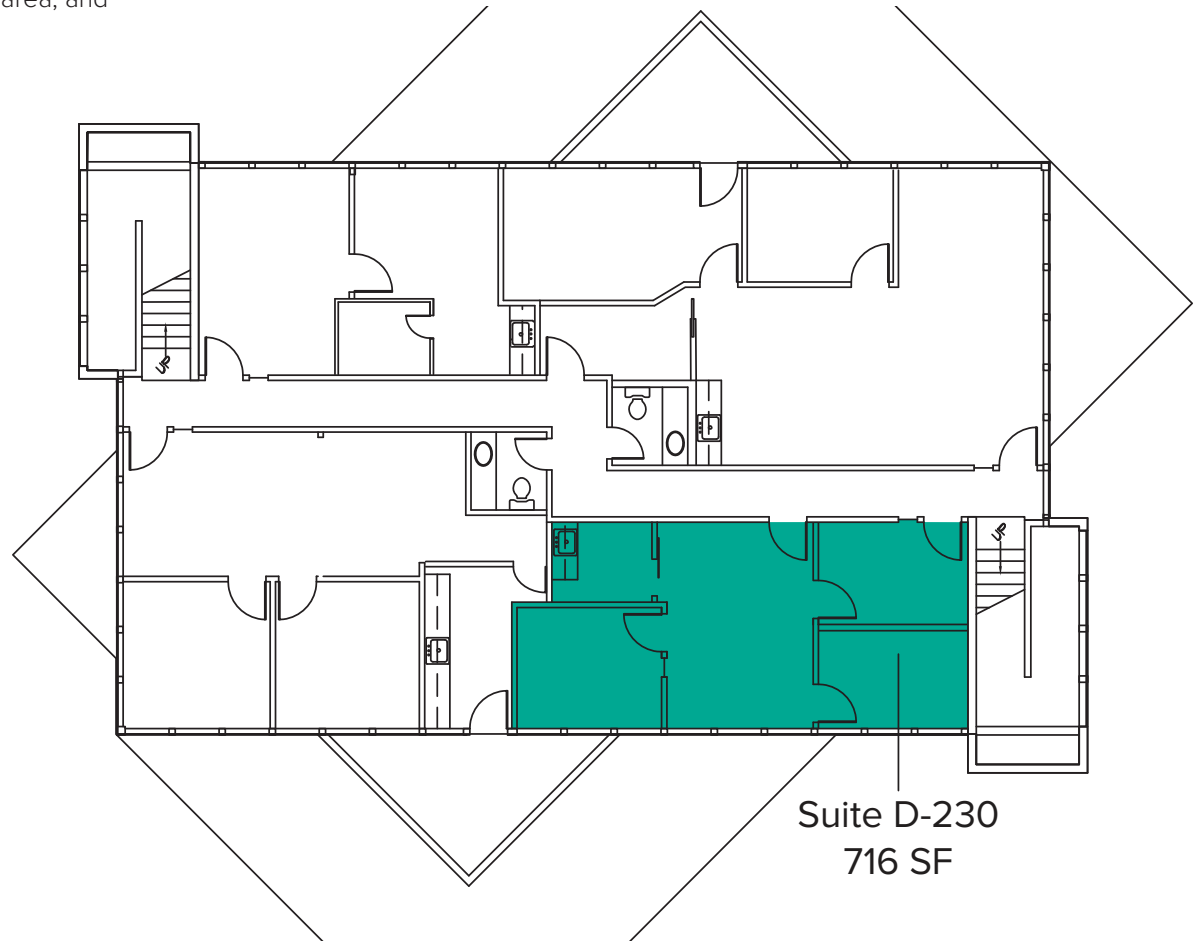
The information provided herein has been obtained from sources believed to be reliable, but no representation or warranty, express or implied, is made with respect to the accuracy or completeness of any such information. Each prospective buyer or tenant should independently investigate, evaluate and verify all information provided herein and any other matters deemed material. Please consult your attorney, tax advisor or other professional advisor. The terms of sale or lease set forth herein are subject to change or withdrawal at any time and without notice.

BUILDING D (22526)

SECOND LEVEL FLOOR PLAN

Suite	Square Feet	Rate
D-230	716 SF	\$2,750/Month, Full Service

Second floor medical/office space with 3 private rooms, reception area, and break room with kitchenette. **Available 5/1/2023.**

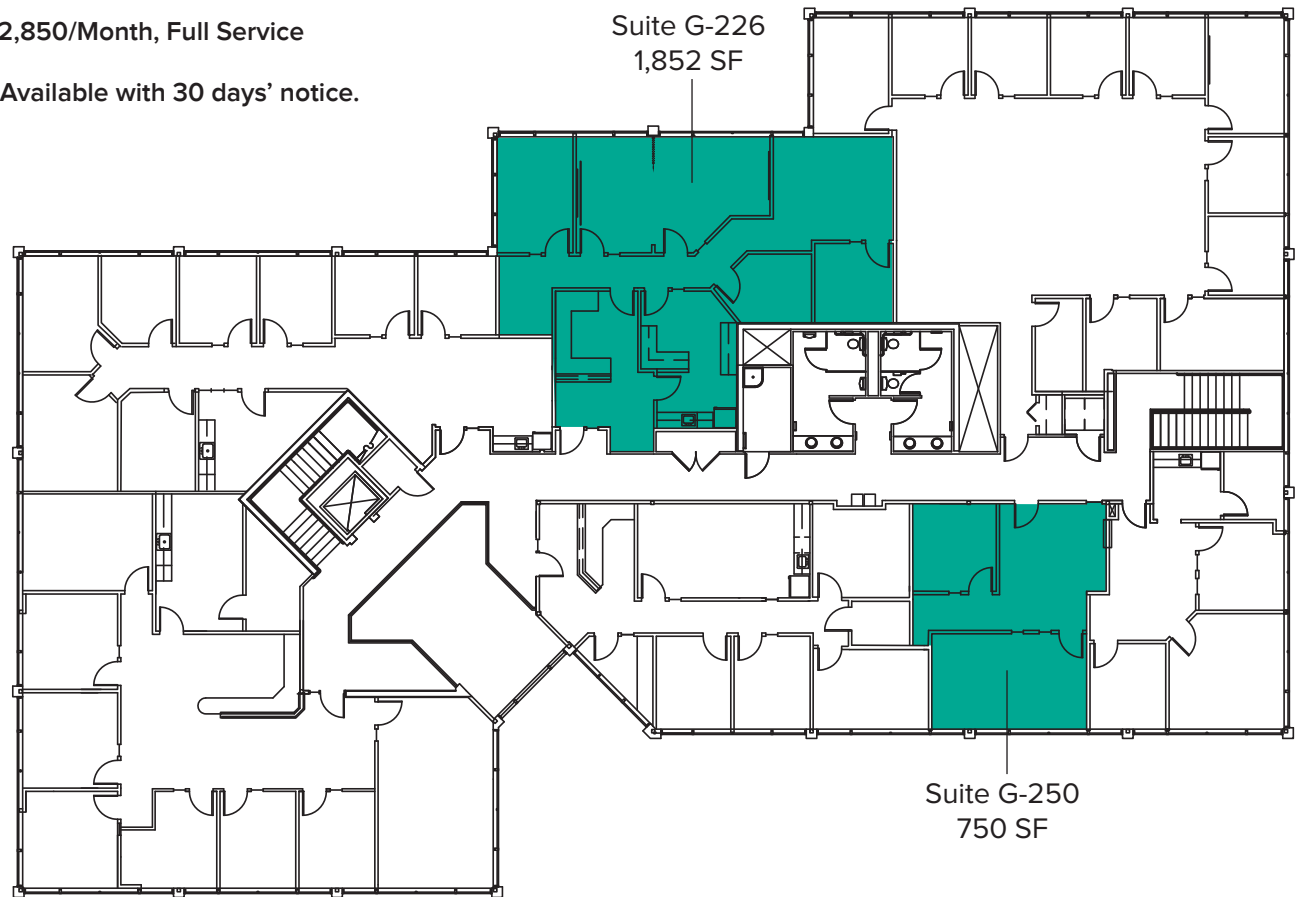


The information provided herein has been obtained from sources believed to be reliable, but no representation or warranty, express or implied, is made with respect to the accuracy or completeness of any such information. Each prospective buyer or tenant should independently investigate, evaluate and verify all information provided herein and any other matters deemed material. Please consult your attorney, tax advisor or other professional advisor. The terms of sale or lease set forth herein are subject to change or withdrawal at any time and without notice.

BUILDING G (22500) SECOND LEVEL FLOOR PLAN

Suite	Square Feet	Rate
G-226	1,852 SF	\$29.00/SF, NNN
Second floor office with private rooms, conference room, and break room with a kitchenette, Available 5/1/2023.		

G-250	750 SF	\$2,850/Month, Full Service
Second floor office with private offices and reception area. Available with 30 days' notice.		



The information provided herein has been obtained from sources believed to be reliable, but no representation or warranty, express or implied, is made with respect to the accuracy or completeness of any such information. Each prospective buyer or tenant should independently investigate, evaluate and verify all information provided herein and any other matters deemed material. Please consult your attorney, tax advisor or other professional advisor. The terms of sale or lease set forth herein are subject to change or withdrawal at any time and without notice.

SITE PLAN



LOCATION MAP

