

# KENT BUSINESS CENTER

25316-25530 74th Avenue S, Kent, WA 98032



## HIGH-IMAGE

## OFC/WHSE/FLEX SPACE

1,388 SF - 18,163 SF Available

### FEATURES:

- New Ownership Ready to Make Deals!
- Many Suite Sizes - Ready to Lease
- Quick Access to SR 167
- Flexible Office/Whse/Flex Configurations
- 12' - 16' Clear Height
- GL Loading
- \$0.55/SF Shell | \$0.75/SF Office

For more information, contact:

**ROSEN~HARBOTTLE COMMERCIAL REAL ESTATE**

**Brian Stewart**

(425) 289-2222

brians@rosenharbottle.com

**Grant Rubenstein**

(425) 289-2220

grant@rosenharbottle.com

[www.rosenharbottle.com](http://www.rosenharbottle.com)

Rosen~Harbottle Commercial Real Estate | P.O. Box 5003 Bellevue, WA 98009-5003  
phone: (425) 454-3030 fax: (425) 454-6705 | [www.rosenharbottle.com](http://www.rosenharbottle.com)

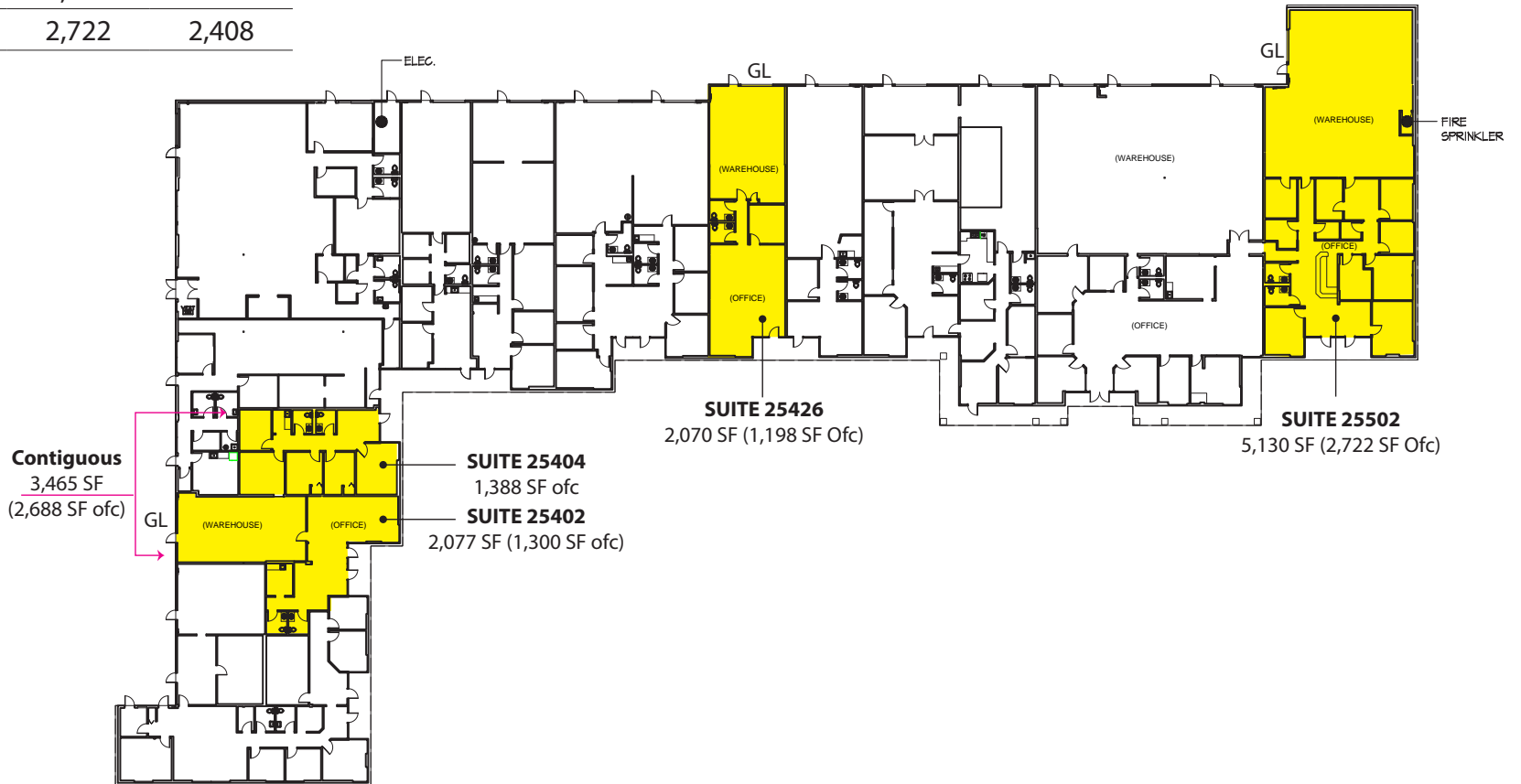
The information provided has been obtained from sources believed reliable. While we do not doubt its accuracy, we have not verified and make no guarantee, warranty or representation about it. It is your sole responsibility to independently confirm its accuracy and completeness.

# KENT BUSINESS CENTER

25316-25530 74th Avenue S, Kent, WA 98032

## Building A

| Suite      | Total SF | Ofc SF | Whse SF |
|------------|----------|--------|---------|
| 25402      | 2,077    | 1,300  | 777     |
| 25404      | 1,388    | 1,388  | -       |
| Contiguous | 3,465    | 2,688  | 777     |
| 25426      | 2,070    | 1,198  | 872     |
| 25502      | 5,130    | 2,722  | 2,408   |



Rosen-Harbottle Commercial Real Estate | P.O. Box 5003 Bellevue, WA 98009-5003  
 phone: (425) 454-3030 fax: (425) 454-6705 | [www.rosenharbottle.com](http://www.rosenharbottle.com)

The information provided has been obtained from sources believed reliable. While we do not doubt its accuracy, we have not verified and make no guarantee, warranty or representation about it. It is your sole responsibility to independently confirm its accuracy and completeness.

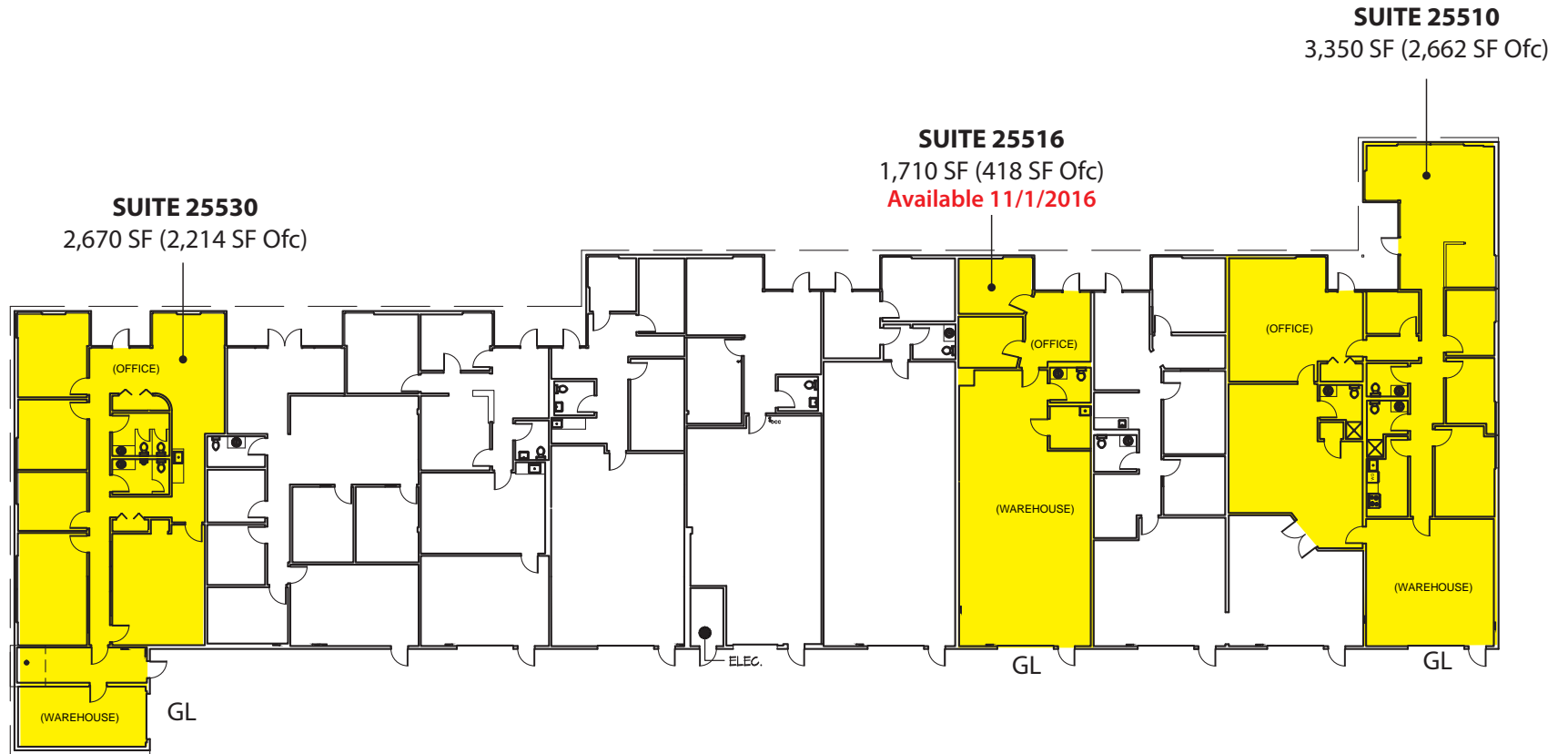


# KENT BUSINESS CENTER

25316-25530 74th Avenue S, Kent, WA 98032

## Building B

| Suite | Total SF | Ofc SF | Whse SF |
|-------|----------|--------|---------|
| 25510 | 3,350    | 2,662  | 688     |
| 25516 | 1,710    | 418    | 1,292   |
| 25530 | 2,670    | 2,214  | 456     |



Rosen-Harbottle Commercial Real Estate | P.O. Box 5003 Bellevue, WA 98009-5003  
phone: (425) 454-3030 fax: (425) 454-6705 | [www.rosenharbottle.com](http://www.rosenharbottle.com)

The information provided has been obtained from sources believed reliable. While we do not doubt its accuracy, we have not verified and make no guarantee, warranty or representation about it. It is your sole responsibility to independently confirm its accuracy and completeness.

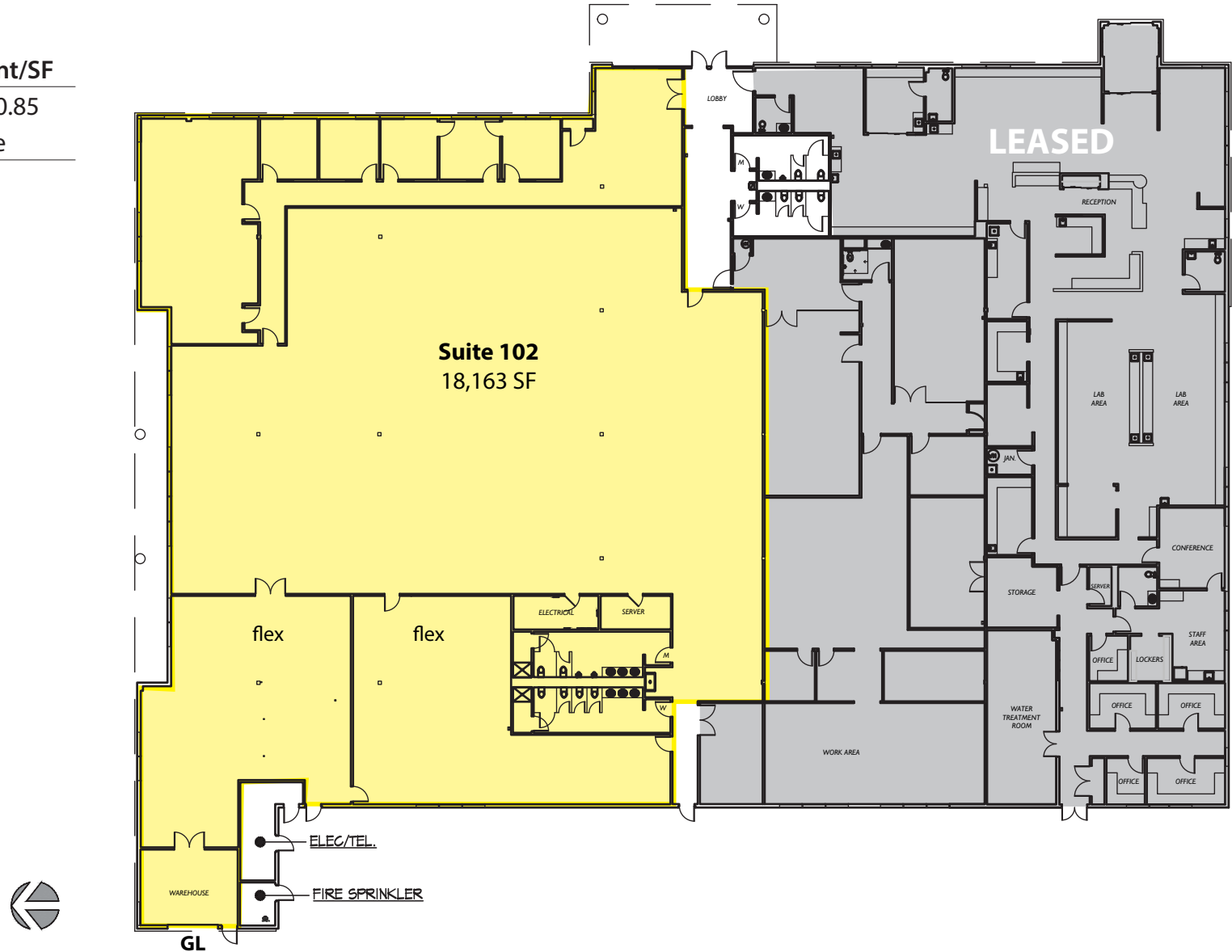
# KENT BUSINESS CENTER

25316-25530 74th Avenue S, Kent, WA 98032

## Building C

| Suite     | Total SF | Rent/SF |
|-----------|----------|---------|
| 25316-102 | 18,163   | \$0.85  |

Notes: HVAC throughout space



Rosen-Harbottle Commercial Real Estate | P.O. Box 5003 Bellevue, WA 98009-5003  
phone: (425) 454-3030 fax: (425) 454-6705 | [www.rosenharbottle.com](http://www.rosenharbottle.com)

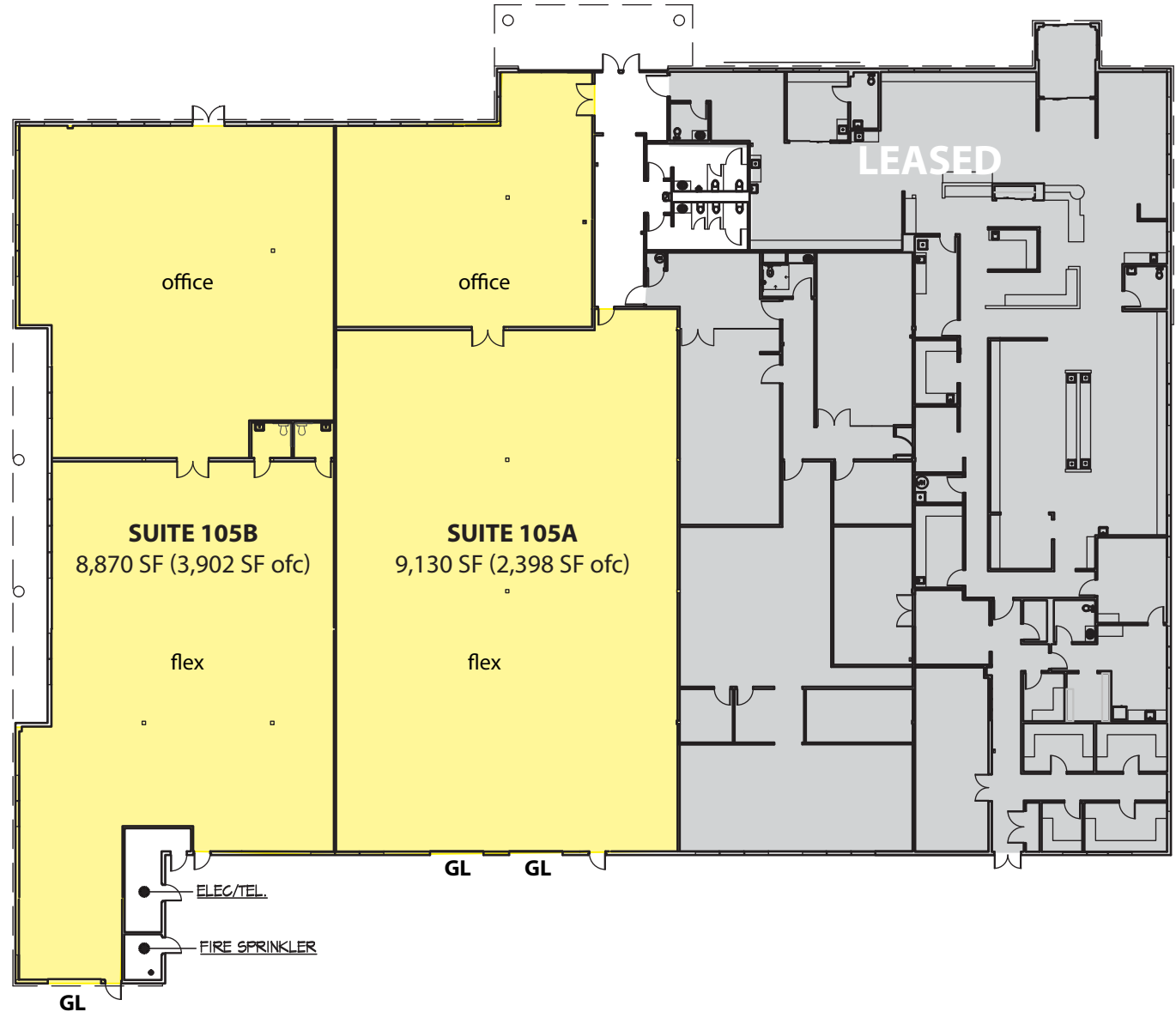
The information provided has been obtained from sources believed reliable. While we do not doubt its accuracy, we have not verified and make no guarantee, warranty or representation about it. It is your sole responsibility to independently confirm its accuracy and completeness.

# KENT BUSINESS CENTER

25316-25530 74th Avenue S, Kent, WA 98032

## Building C

### Suite 102 - Option A (Sample)

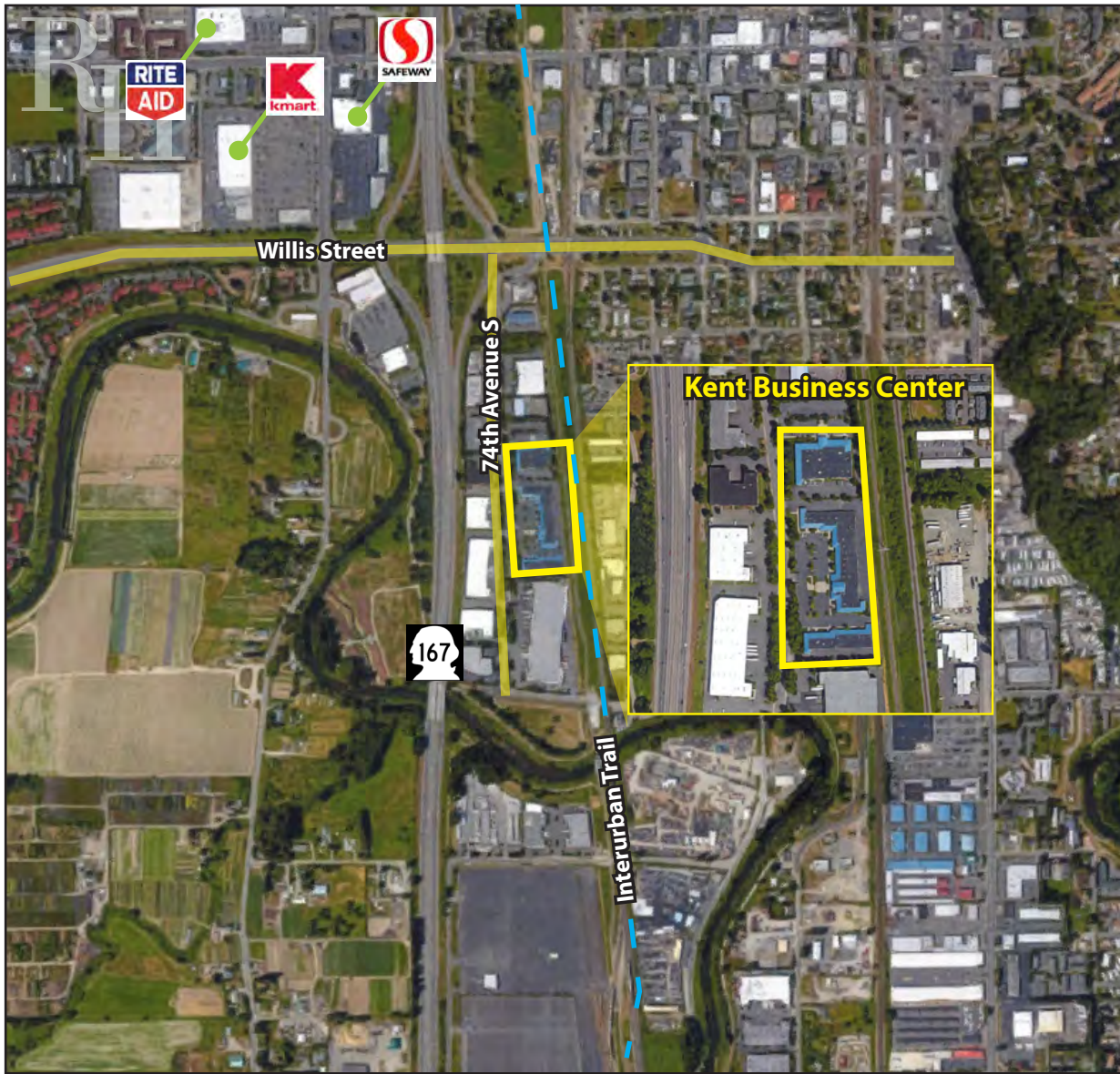


Rosen-Harbottle Commercial Real Estate | P.O. Box 5003 Bellevue, WA 98009-5003  
phone: (425) 454-3030 fax: (425) 454-6705 | [www.rosenharbottle.com](http://www.rosenharbottle.com)

The information provided has been obtained from sources believed reliable. While we do not doubt its accuracy, we have not verified and make no guarantee, warranty or representation about it. It is your sole responsibility to independently confirm its accuracy and completeness.

# KENT BUSINESS CENTER

25316-25530 74th Avenue S, Kent, WA 98032



For more information, contact:

**ROSEN~HARBOTTLE  
COMMERCIAL REAL ESTATE**

**Brian Stewart**

(425) 289-2222

brians@rosenharbottle.com

**Grant Rubenstein**

(425) 289-2220

grant@rosenharbottle.com

www.rosenharbottle.com

Rosen~Harbottle Commercial Real Estate | P.O. Box 5003 Bellevue, WA 98009-5003

phone: (425) 454-3030 fax: (425) 454-6705 | [www.rosenharbottle.com](http://www.rosenharbottle.com)

The information provided has been obtained from sources believed reliable. While we do not doubt its accuracy, we have not verified and make no guarantee, warranty or representation about it. It is your sole responsibility to independently confirm its accuracy and completeness.