

# WILLOWS PARK I & II

15205 - 15265 NE 95th Street, Redmond, WA 98052

**NEW TO MARKET!**



**5,806 SF (2,122 SF Ofc)**

**\$1.40/SF Ofc | \$0.80/SF Whse, NNN**

**10,089 SF (2,084 SF Ofc)**

**\$1.35/SF Ofc | \$0.75/SF Whse, NNN**

## FEATURES:

- Building Signage Available
- Close-In Redmond Location
- Grade Level Door & Dock High Loading
- 16' Clear Height
- Quality Concrete Tilt-Up Construction

ROSEN | HARBOTTLE  
**RH**

For more information, contact:

ROSEN~HARBOTTLE  
COMMERCIAL REAL ESTATE

**Grant Rubenstein**  
(425) 289-2220  
grant@rosenharbottle.com

www.rosenharbottle.com

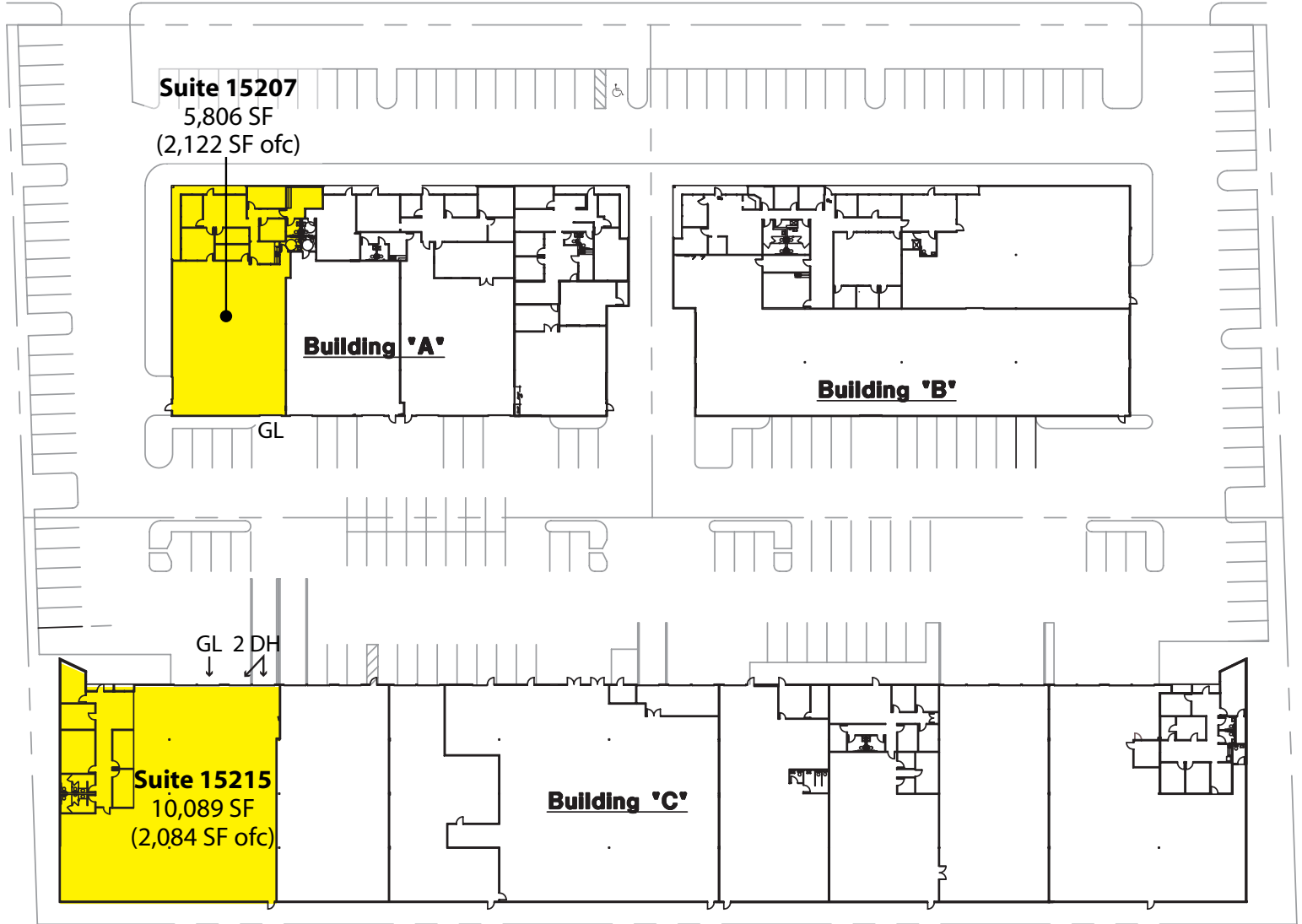
Rosen~Harbottle Commercial Real Estate | P.O. Box 5003 Bellevue, WA 98009-5003  
phone: (425) 454-3030 fax: (425) 454-6705 | www.rosenharbottle.com

The information provided has been obtained from sources believed reliable. While we do not doubt its accuracy, we have not verified and make no guarantee, warranty or representation about it. It is your sole responsibility to independently confirm its accuracy and completeness.

# WILLOWS PARK I & II

15205 - 15265 NE 95th Street, Redmond, WA 98052

NE 95th Street



For more information, contact:

ROSEN~HARBOTTLE COMMERCIAL REAL ESTATE

**Grant Rubenstein**

(425) 289-2220

grant@rosenharbottle.com

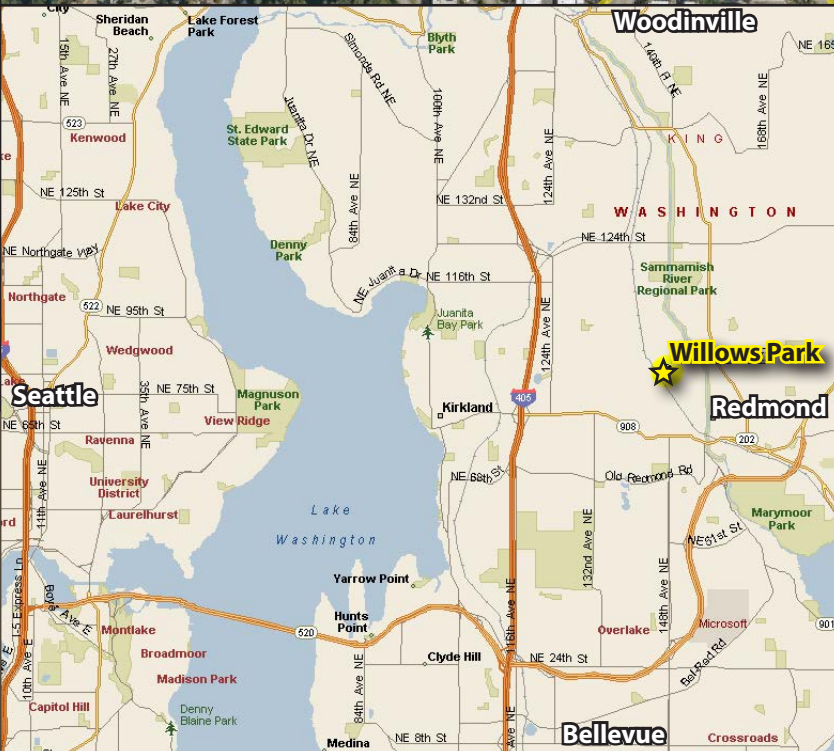
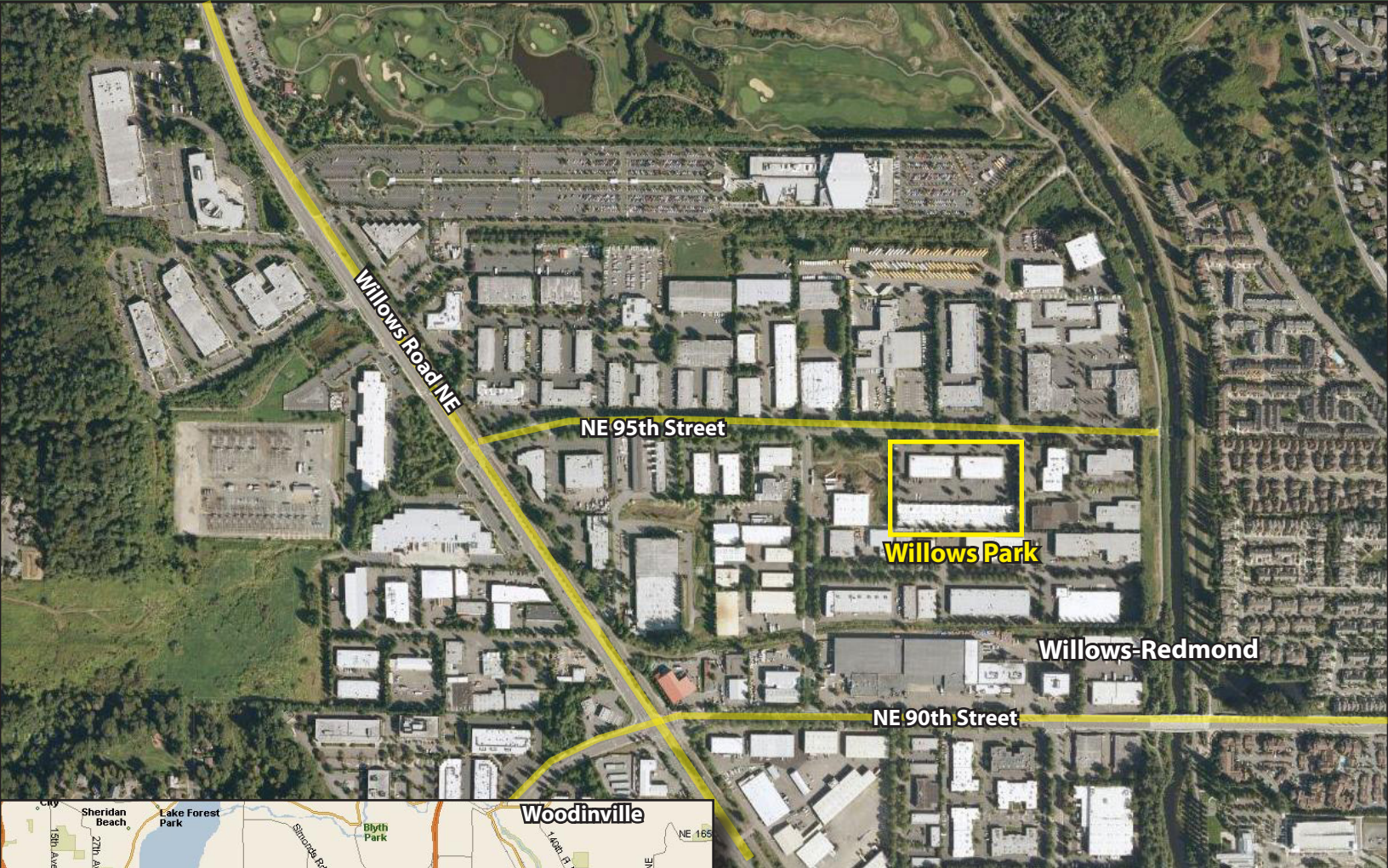
www.rosenharbottle.com

The information provided has been obtained from sources believed reliable. While we do not doubt its accuracy, we have not verified and make no guarantee, warranty or representation about it. It is your sole responsibility to independently confirm its accuracy and completeness.



# WILLOWS PARK I & II

15205 - 15265 NE 95th Street, Redmond, WA 98052



**Rosen | Harbottle**  
Commercial Real Estate

P.O. Box 5003, Bellevue, WA 98009-5003

(425) 454-3030 Phone (425) 454-6705 Fax

[www.rosenharbottle.com](http://www.rosenharbottle.com)

The information provided has been obtained from sources believed reliable. While we do not doubt its accuracy, we have not verified and make no guarantee, warranty or representation about it. It is your sole responsibility to independently confirm its accuracy and completeness.