

# BRIDLE TRAILS SHOPPING CENTER

6501-6625 132<sup>nd</sup> Avenue NE, Kirkland, WA 98033



## NEIGHBORHOOD ANCHORED CENTER!

**Inline Space Available**

**3,667 SF - 10,304 SF**

**\$24.00/SF, NNN**

**Endcap Space Available**

**3,130 SF - \$28.00/SF, NNN**

### FEATURES:

- Pool Space Available in the Former Bally's Remaining Space
- High Exposure Suburban Retail Shopping Center
- Frontage on 132nd Ave NE & NE 70th Pl
- Tenants Include Red Apple Market, Ace Hardware, Bartell Drugs & Starbucks

ROSEN | HARBOTTLE  
**RH**

For more information, contact:

**ROSEN~HARBOTTLE  
COMMERCIAL REAL ESTATE**

**Grant Rubenstein**

(425) 289-2220

grant@rosenharbottle.com

**Caleb Farnworth, CCIM**

(425) 289-2235

calebf@rosenharbottle.com

www.rosenharbottle.com

	<u>1 Mile</u>	<u>3 Mile</u>	<u>5 Mile</u>
2014 Population:	10,379	91,098	237,33
2014 Avg Income:	\$122,024	\$121,551	\$114,801

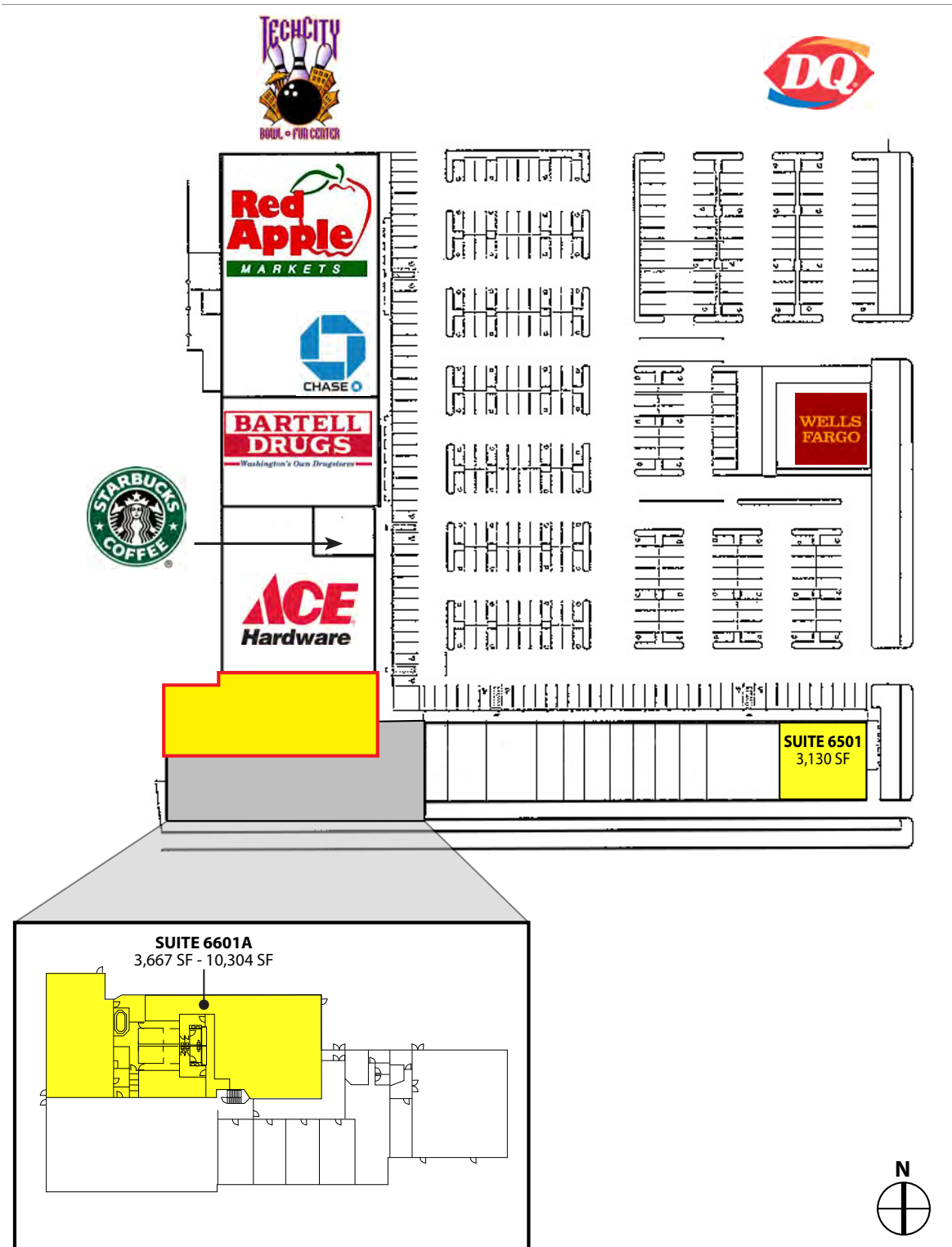
Rosen~Harbottle Commercial Real Estate | P.O. Box 5003 Bellevue, WA 98009-5003  
phone: (425) 454-3030 fax: (425) 454-6705 | www.rosenharbottle.com

The information provided has been obtained from sources believed reliable. While we do not doubt its accuracy, we have not verified and make no guarantee, warranty or representation about it. It is your sole responsibility to independently confirm its accuracy and completeness.

# BRIDLE TRAILS SHOPPING CENTER

6501-6625 132<sup>nd</sup> Avenue NE, Kirkland, WA 98033

NE 70th Place



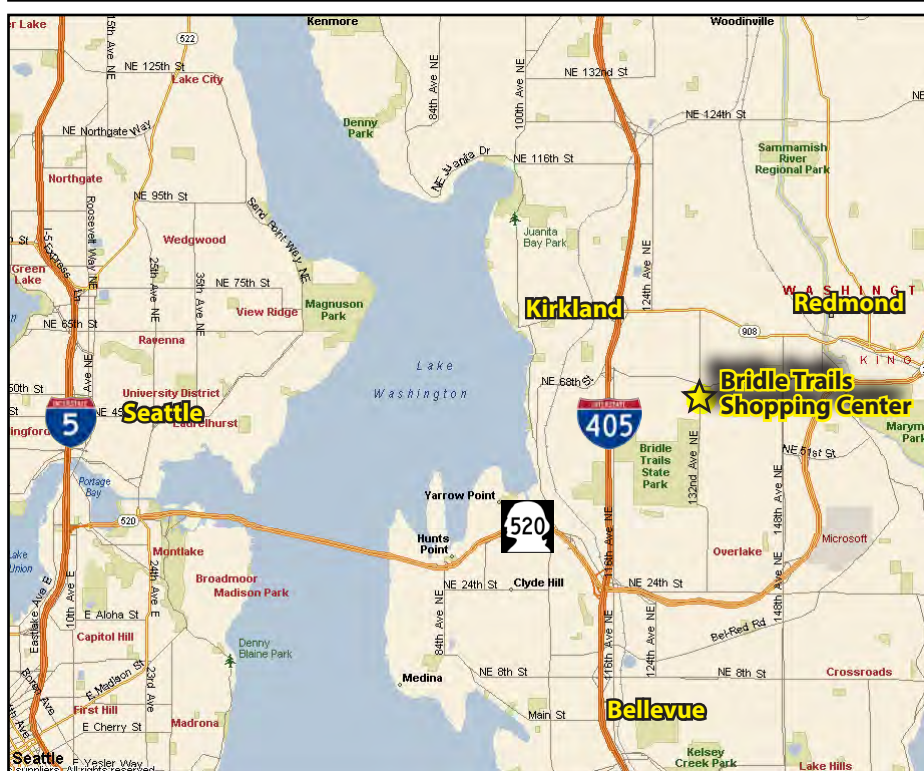
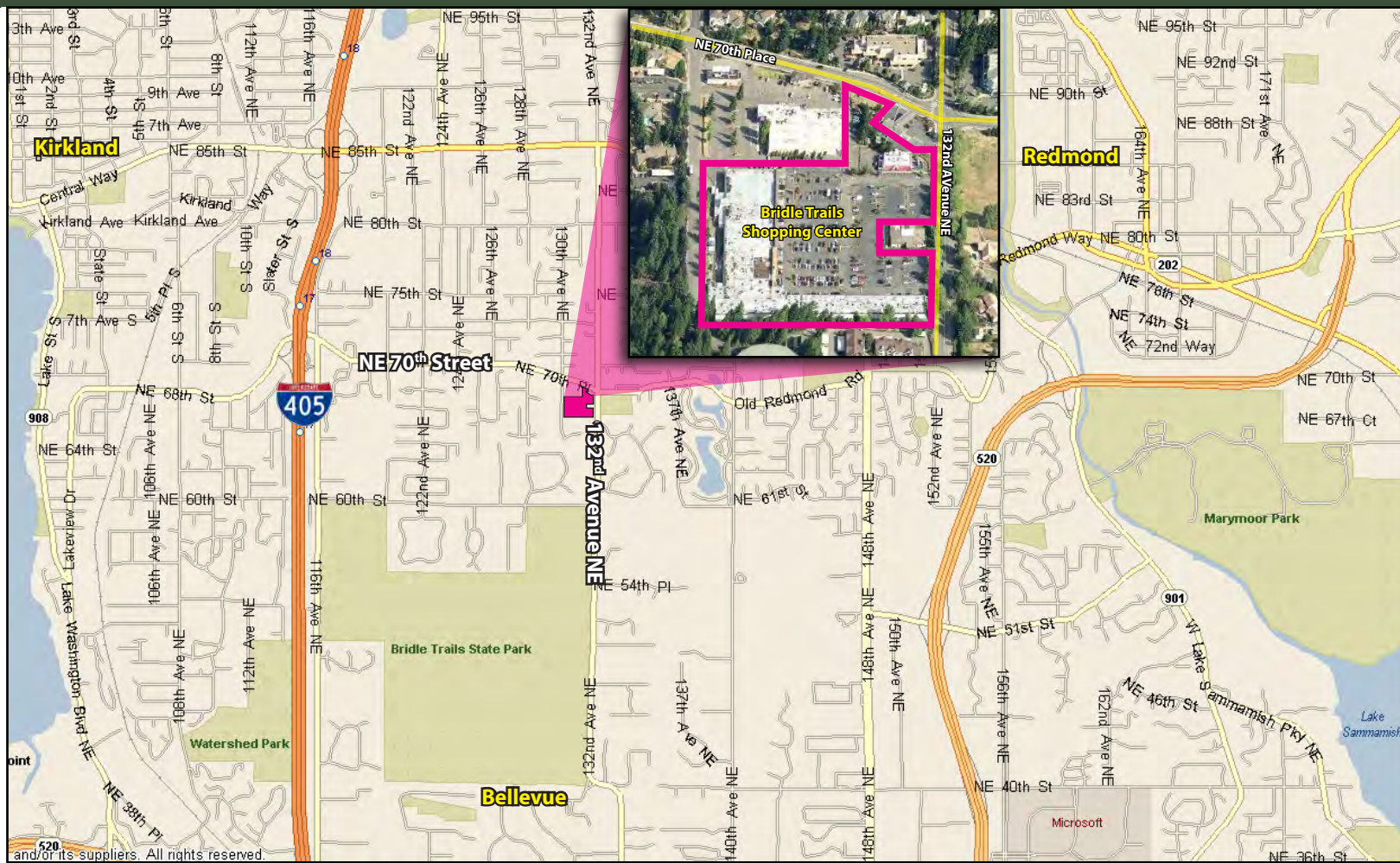
132nd Avenue NE

The information provided has been obtained from sources believed reliable. While we do not doubt its accuracy, we have not verified and make no guarantee, warranty or representation about it. It is your sole responsibility to independently confirm its accuracy and completeness.



# BRIDLE TRAILS SHOPPING CENTER

6501-6625 132<sup>nd</sup> Avenue NE, Kirkland, WA 98033



For more information, contact:

**ROSEN~HARBOTTLE  
COMMERCIAL REAL ESTATE**

**Grant Rubenstein**

(425) 289-2220

grant@rosenharbottle.com

**Caleb Farnworth, CCIM**

(425) 289-2235

calebf@rosenharbottle.com

www.rosenharbottle.com

The information provided has been obtained from sources believed reliable. While we do not doubt its accuracy, we have not verified and make no guarantee, warranty or representation about it. It is your sole responsibility to independently confirm its accuracy and completeness.