

MEADOW CREEK OFFICE PARK

22500-22619 SE 64th Place, Issaquah, WA 98027



CLASS A OFFICE SPACE 716 SF - 1,643 SF Available

FEATURES:

- Minutes from Costco Headquarters
- Class A Finishes
- Amazing Location off I-90 at Front St./E Lake Sammamish Pkwy
- Nearby Amenities Include Retailers, Grocers, Restaurants, Hospital & Parks
- Private Balcony & Free Surface Parking
- Park-Like, Campus Setting

For more information, contact:

**ROSEN~HARBOTTLE
COMMERCIAL REAL ESTATE**

Brian Stewart

(425) 289-2222

brians@rosenharbottle.com

www.rosenharbottle.com

Rosen~Harbottle Commercial Real Estate | P.O. Box 5003 Bellevue, WA 98009-5003
phone: (425) 454-3030 fax: (425) 454-6705 | www.rosenharbottle.com

The information provided has been obtained from sources believed reliable. While we do not doubt its accuracy, we have not verified and make no guarantee, warranty or representation about it. It is your sole responsibility to independently confirm its accuracy and completeness.

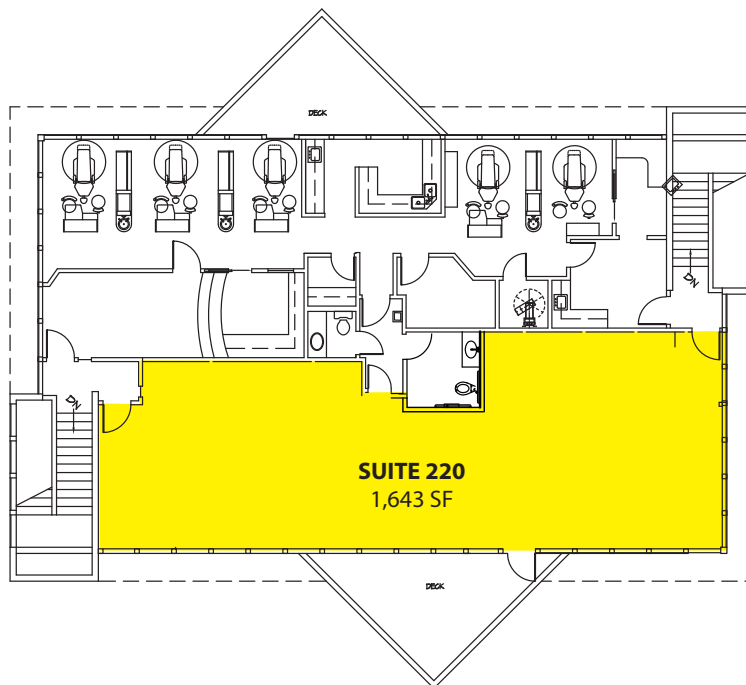
MEADOW CREEK OFFICE PARK

22500-22619 SE 64th Place, Issaquah, WA 98027

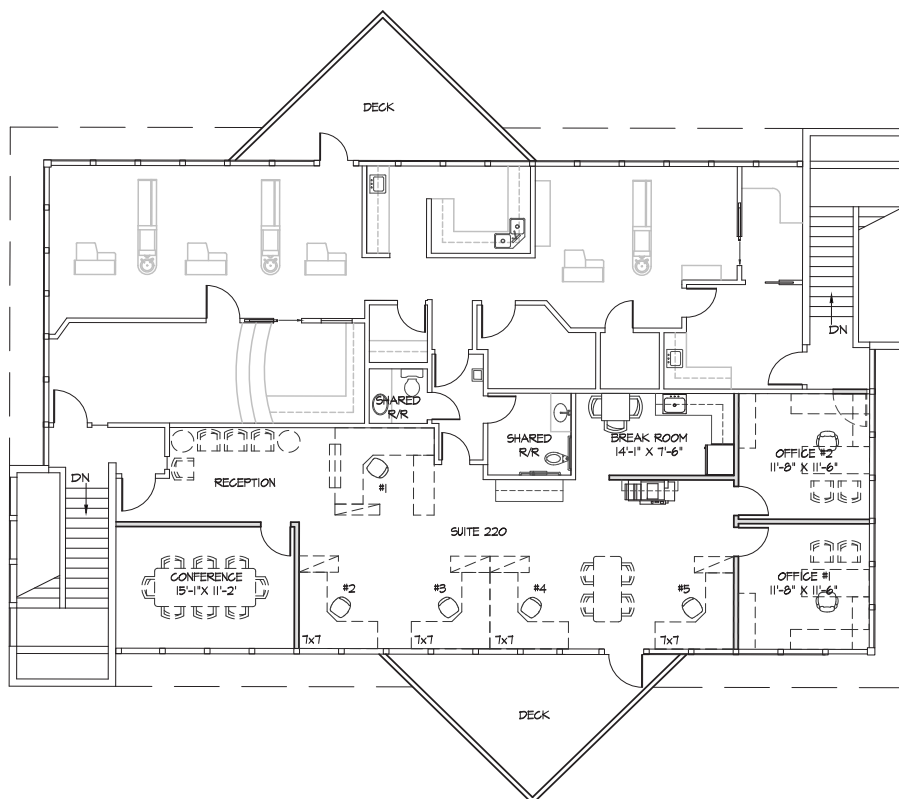
Building B - Second Floor

SUITE	SF	RATE
Suite 220	1,643 SF	\$26.00/SF, NNN

Notes: Brand new lighting, ceiling grid, carpet & paint throughout.



Suite 220 - Sample Floor Plan



Rosen~Harbottle Commercial Real Estate | P.O. Box 5003 Bellevue, WA 98009-5003
phone: (425) 454-3030 fax: (425) 454-6705 | www.rosenharbottle.com

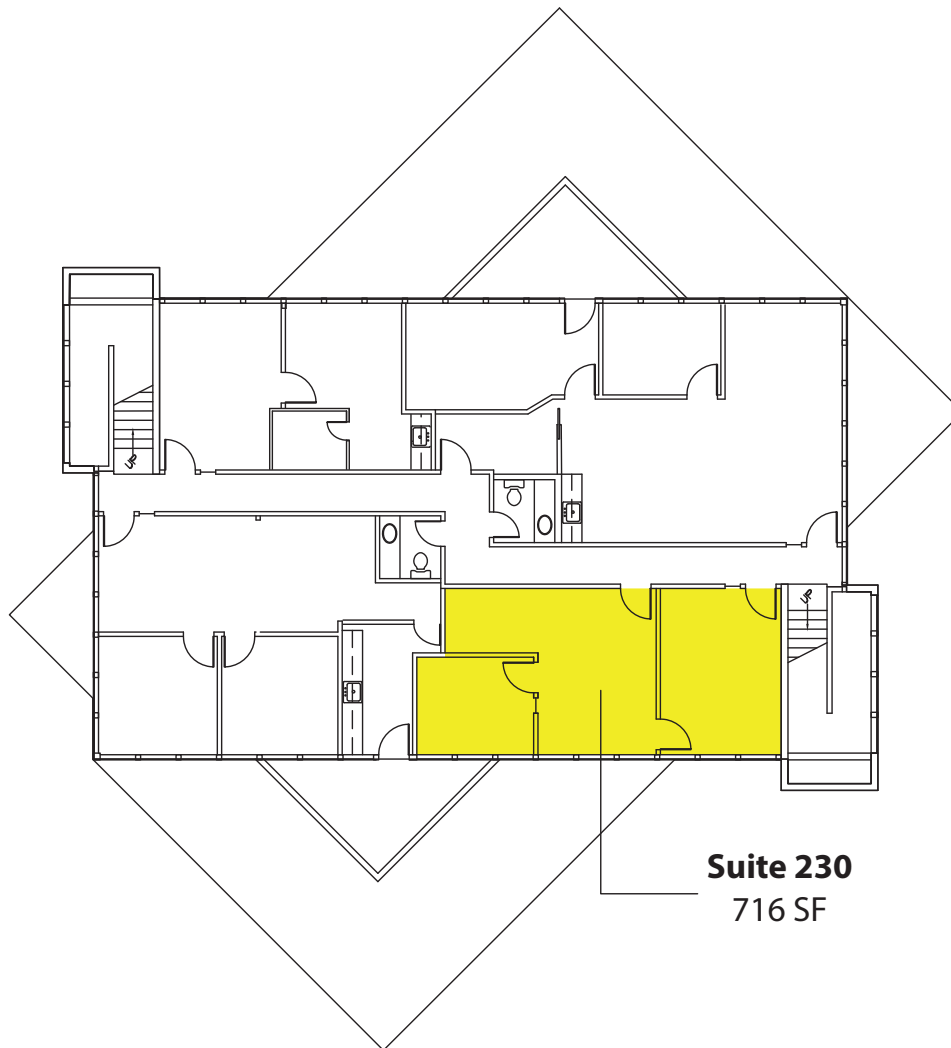
The information provided has been obtained from sources believed reliable. While we do not doubt its accuracy, we have not verified and make no guarantee, warranty or representation about it. It is your sole responsibility to independently confirm its accuracy and completeness.

MEADOW CREEK OFFICE PARK

22500-22619 SE 64th Place, Issaquah, WA 98027

Building D - Second Floor

SUITE	SF	RATE
Suite 230	716 SF	\$2,440/Month, Full Service

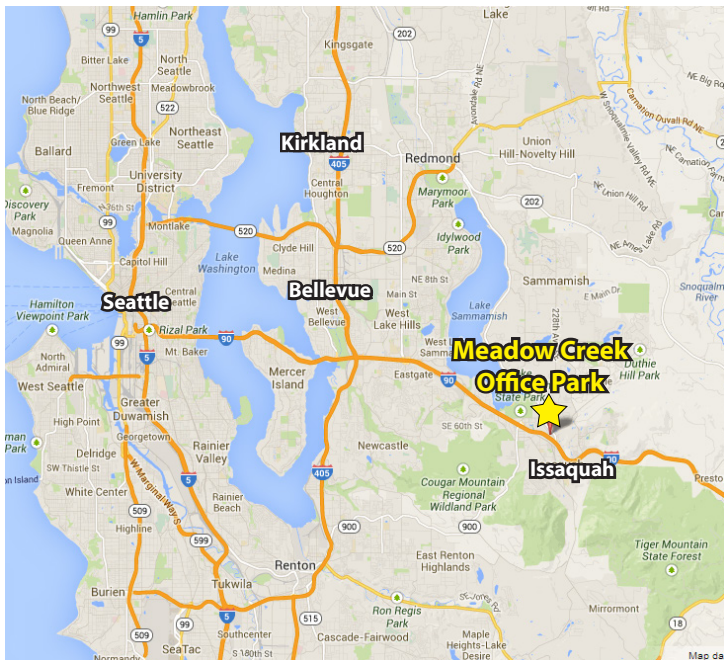


Rosen~Harbottle Commercial Real Estate | P.O. Box 5003 Bellevue, WA 98009-5003
phone: (425) 454-3030 fax: (425) 454-6705 | www.rosenharbottle.com

The information provided has been obtained from sources believed reliable. While we do not doubt its accuracy, we have not verified and make no guarantee, warranty or representation about it. It is your sole responsibility to independently confirm its accuracy and completeness.

MEADOW CREEK OFFICE PARK

22500-22619 SE 64th Place, Issaquah, WA 98027



For more information, contact:

**ROSEN~HARBOTTLE
COMMERCIAL REAL ESTATE**

Brian Stewart

(425) 289-2222

brians@rosenharbottle.com

www.rosenharbottle.com

Rosen~Harbottle Commercial Real Estate | P.O. Box 5003 Bellevue, WA 98009-5003
phone: (425) 454-3030 fax: (425) 454-6705 | www.rosenharbottle.com

The information provided has been obtained from sources believed reliable. While we do not doubt its accuracy, we have not verified and make no guarantee, warranty or representation about it. It is your sole responsibility to independently confirm its accuracy and completeness.

