

# PARK PLACE PROFESSIONAL PLAZA - Bldg F

111 SE Everett Mall Way, Everett, WA 98208



## Owner/User Sale: Northend Office

### New Price Reduction

**\$899,000 (\$161/SF)**

#### FEATURES:

- **Motivated Seller**
- **5,594 SF Two-Story Building**
  - 1,768 SF 2nd Floor | 3,826 SF 1st Floor
- **Monument Signage Available**
- **Beautiful, Park-Like Setting**
- **Quick Access to I-5, Hwy 99 & Everett Mall**
- **Major Transit & Amenities Nearby on Everett Mall Way**

For more information, contact:

**ROSEN~HARBOTTLE COMMERCIAL REAL ESTATE**

**Jack Rosen**

(425) 289-2221

jack@rosenharbottle.com

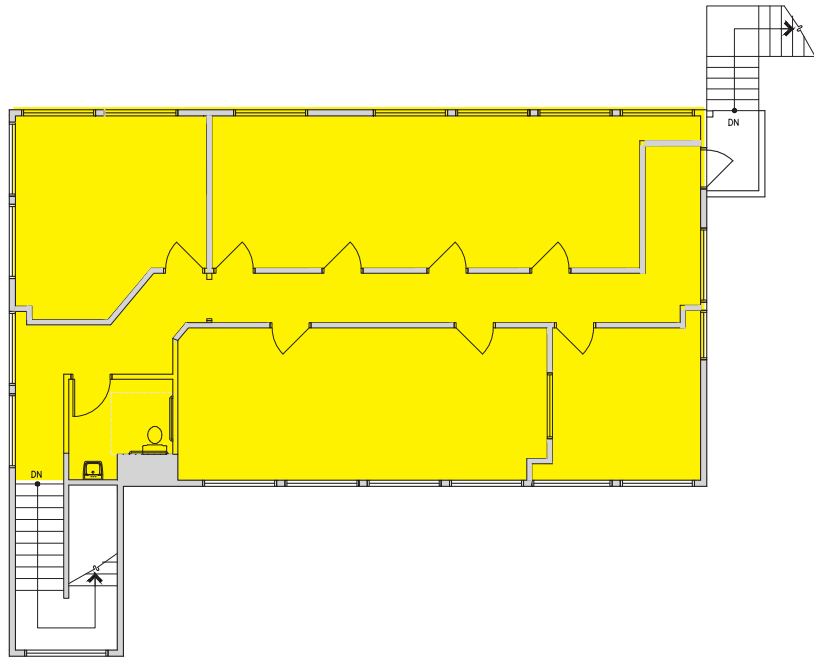
www.rosenharbottle.com

Rosen~Harbottle Commercial Real Estate | P.O. Box 5003 Bellevue, WA 98009-5003

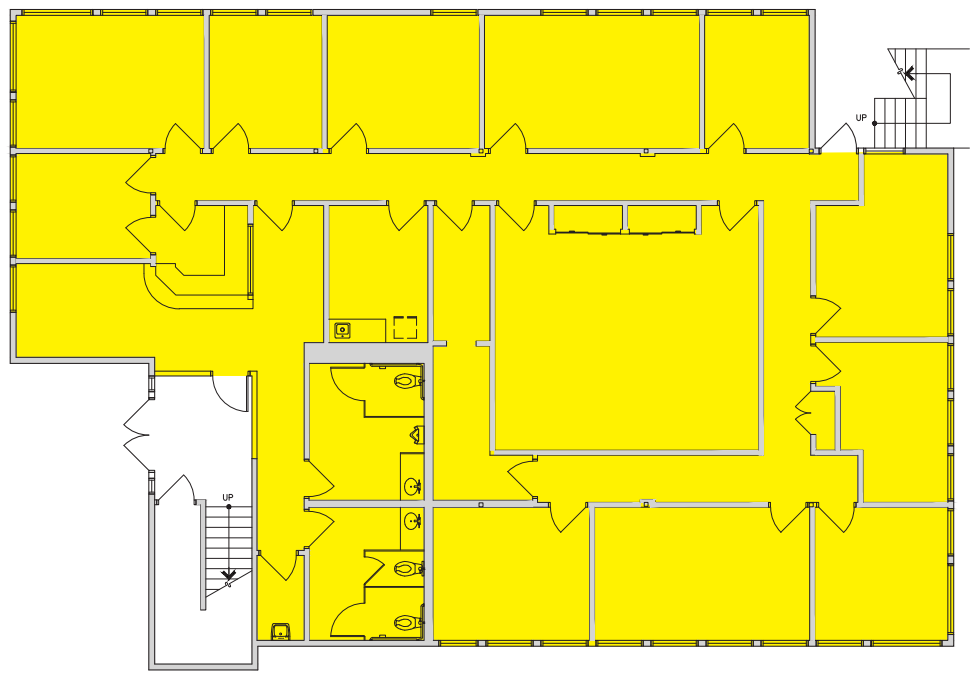
phone: (425) 454-3030 fax: (425) 454-6705 | [www.rosenharbottle.com](http://www.rosenharbottle.com)

The information provided has been obtained from sources believed reliable. While we do not doubt its accuracy, we have not verified and make no guarantee, warranty or representation about it. It is your sole responsibility to independently confirm its accuracy and completeness.

Second Floor: 1,768 SF



First Floor: 3,826 SF





**Monument Signage**



**Main Entrance**

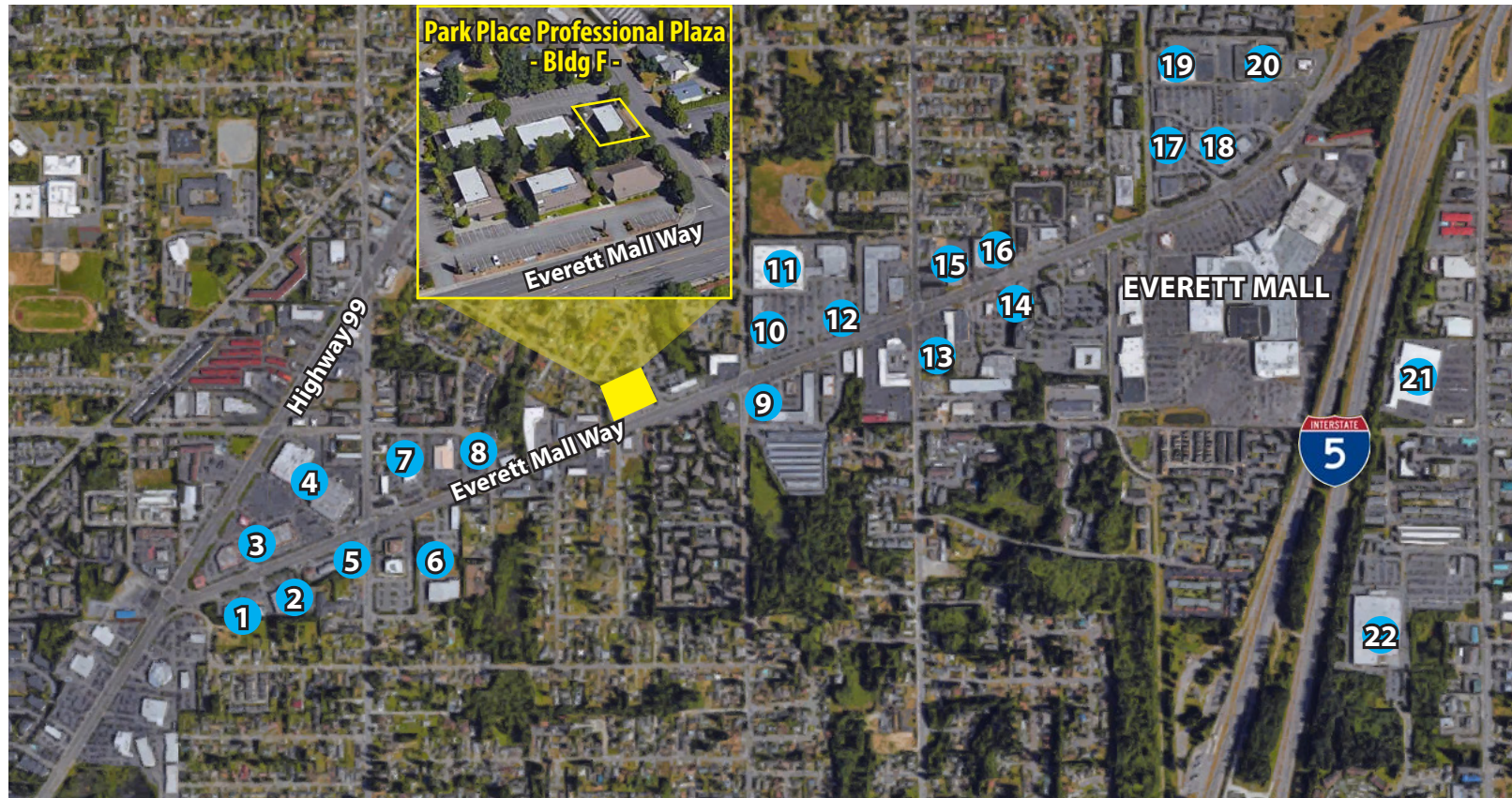


**Reception**



**Abundant Natural Light**





- |                             |                        |                      |
|-----------------------------|------------------------|----------------------|
| 1. FedEx Office             | 9. Panera              | 17. PetCo            |
| 2. Furniture Factory Direct | 10. GameStop           | Mattress Depot USA   |
| 3. Outback Steakhouse       | Sally Beauty           | 18. Half Price Books |
| Great Clips                 | 11. Target             | Pier 1 Imports       |
| 4. Hobby Lobby              | 12. Starbucks          | Verizon              |
| Rite Aid                    | 13. Grocery Outlet     | 19. Toys 'R' Us      |
| Office Depot                | 14. T-Mobile           | Michaels             |
| 5. Car Toys                 | 15. Carpet Liquidators | 20. Walmart          |
| 6. Goodwill                 | 16. Trader Joe's       | 21. Costco           |
| 7. Kia                      | Dollar Tree            | 22. WinCo            |
| 8. Gerber Collision & Glass |                        |                      |

**RH** | ROSEN  
HARBOTTLE  
COMMERCIAL REAL ESTATE

For additional information, contact:

**Jack Rosen**  
(425) 289-2221  
jack@rosenharbottle.com

P.O. Box 5003 Bellevue, WA 98009-5003  
phone: (425) 454-3030 fax: (425) 454-6705  
www.rosenharbottle.com