

OFFICE/RETAIL  
LEASE



# GATEWAY POINTE BUSINESS PARK

## 2601 - 2715 Jahn Ave NW | Gig Harbor, WA

**Caleb Farnworth, CCIM**

425.289.2235

calebf@rosenharbottle.com

**Mike Armanious, CCIM**

253.988.6115

marmanious@kw.com

425.454.3030  
rosenharbottle.com

PO Box 5003  
Bellevue, WA 98009 - 5003





# LOW PRICES IN GIG HARBOR

**728 SF - 2,853 SF Available**

## IDEAL USES:

- Cafe/Restaurant
- Office/Medical
- Showroom
- Fitness Center/Recreation Uses
- Education / Training
- Boutique Store/Salon

## FEATURES:

- On-Site Amenities: Exercise Facility and Daycare
- High Visibility to 70,000+ Cars/Day on Highway 16
- View of Narrows Bridge & Olympic Mountains
- 4 Stalls / 1,000 SF Parking Ratio
- Vaulted Ceilings with Skylights
- Heating and Air Conditioning Throughout



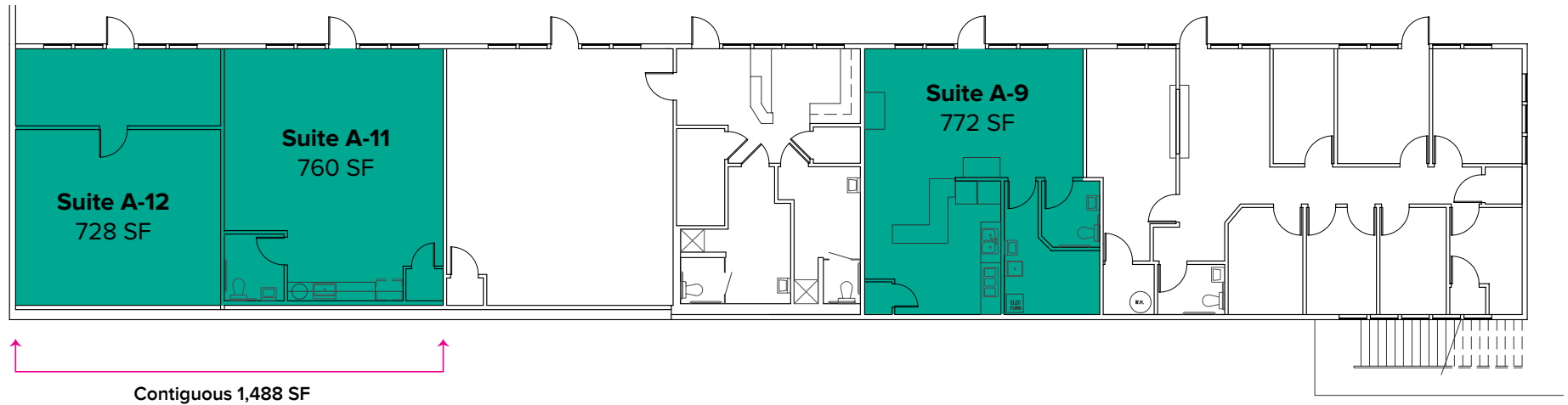
# SUITE DETAILS

Suite	Square Feet	Rent
A-9	772 SF	\$1,287/Month
A-11	760 SF - 1,488 SF	\$1,267/Month
A-12	728 SF - 1,488 SF	\$728/Month
B-4	1,061 SF - 2,853 SF	\$1,636/Month
B-5/6	1,792 SF - 2,853 SF	\$2,763/Month
B 10-12	2,537 SF	\$3,488/Month
C-7	767 SF	\$1,278/Month
F-05	1,362 SF	\$2,100/Month



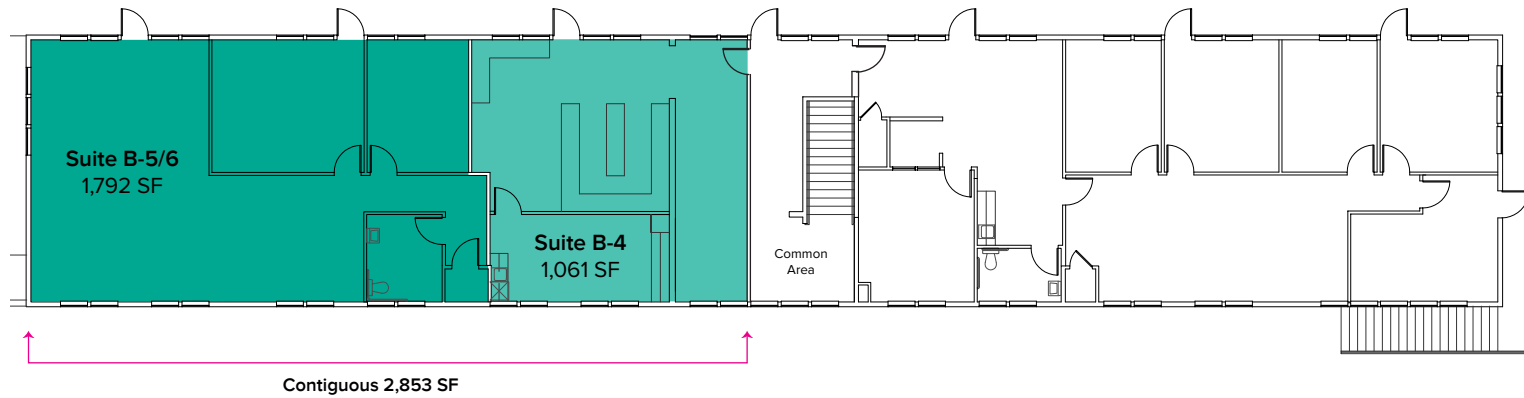
# FLOOR PLAN

Suite	Square Feet	Rent	Notes
A-9	772 SF	\$1,287/Month	Restaurant/cafe space with kitchen, open area, and 1 restroom. <b>Available 11/1/20.</b>
A-11	760 SF - 1,488 SF	\$1,267/Month	First floor suite with open work area, 1 restroom, and kitchenette. Contiguous with Suite A-12 for a total of 1,488 SF. <b>Available Now.</b>
A-12	728 SF - 1,488 SF	\$728/Month	First floor unfurnished warehouse space. Contiguous with Suite A-11 for a total of 1,488 SF. <b>Available Now.</b>

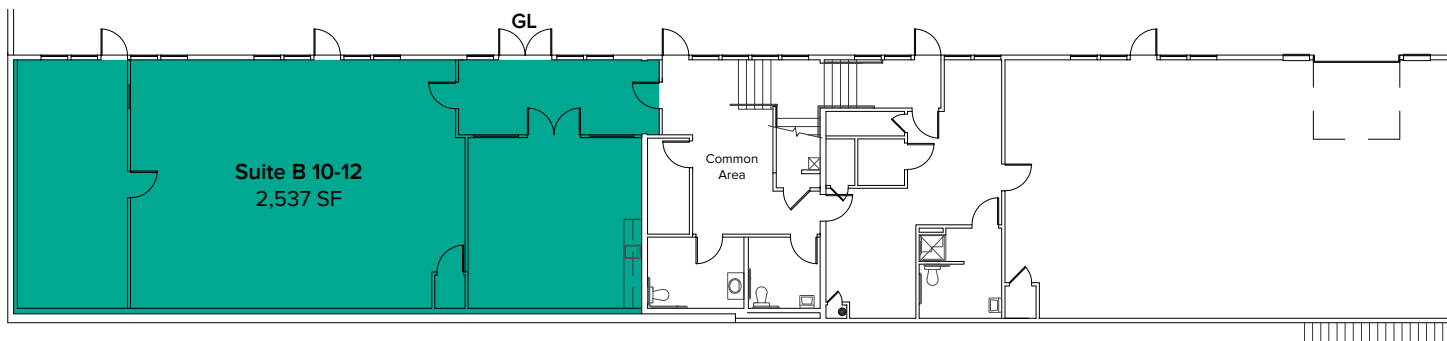


# FLOOR PLAN

Suite	Square Feet	Rate	Notes
B-4	1,061 SF - 2,853 SF	\$1,636/Month	Second floor suite includes 2 POs, open work space, and 1 restroom. Contiguous with Suite B-5/6 for a total of 2,853 SF. <b>Available Now.</b>
B-5/6	1,792 SF - 2,853 SF	\$2,763/Month	Second floor suite includes open work area and break room with kitchenette. Contiguous with Suite B-4 for a total of 2,853 SF. <b>Available Now.</b>

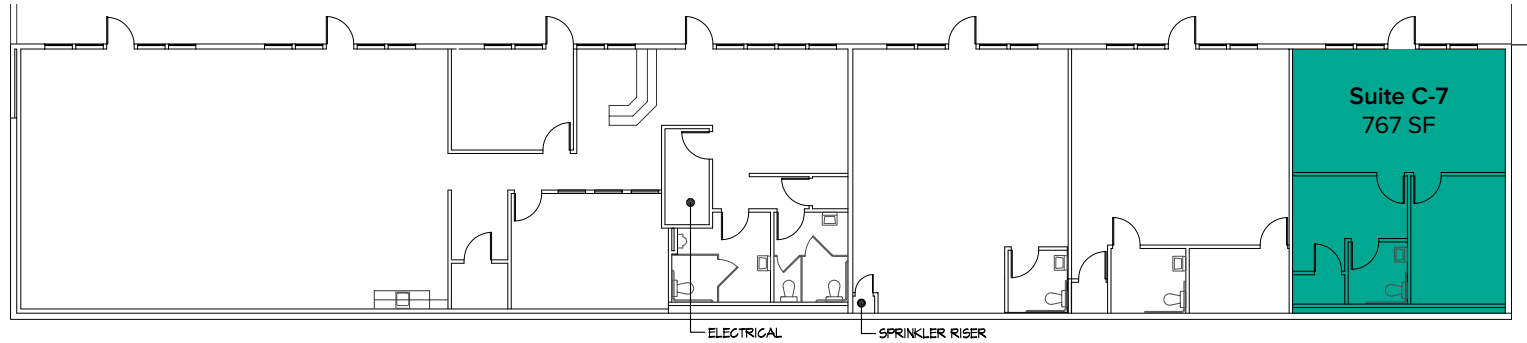


Suite	Square Feet	Rate	Notes
B 10-12	2,537 SF	\$3,488/Month	First floor suite includes break room and open work area. <b>Available Now.</b>

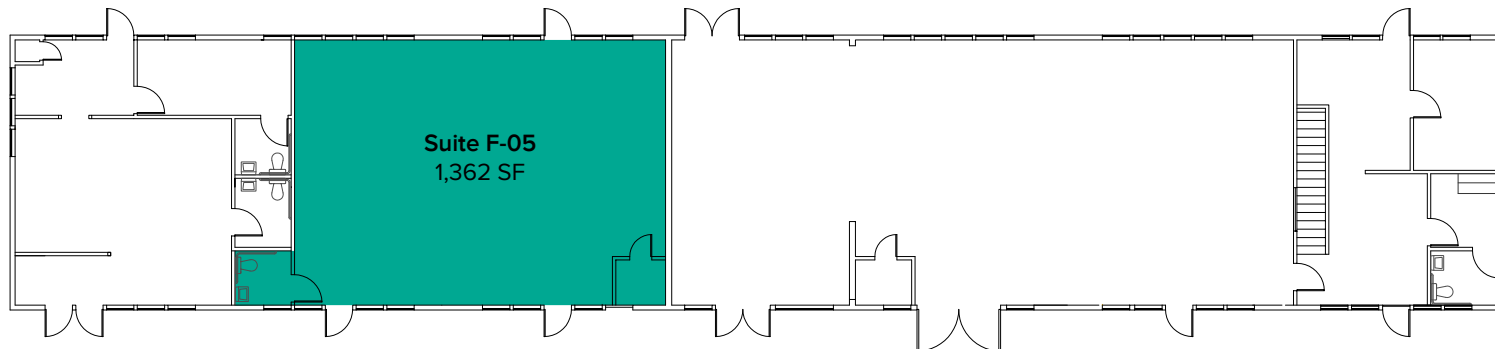


# FLOOR PLAN

Suite	Square Feet	Rent	Notes
C-7	767 SF	\$1,278/Month	First floor, end cap suite. 2 POs, 1 restroom, and open office area. <b>Available now.</b>



Suite	Square Feet	Rent	Notes
F-05	1,362 SF	\$2,100/Month	Second floor suite. Open area. Suite includes 1 restroom. <b>Available now.</b>



# LOCATION MAP



## NEARBY AMENITIES:

Safeway

Kohl's

Homegoods

Starbucks

Panera Bread

Applebee's Grill & Bar

QFC

AT&T

Lunchbox Laboratory

Marshalls

Michaels

Galaxy Theater

## DRIVE TIME:

Uptown Gig Harbor: 4 Minutes

Downtown Gig Harbor: 8 Minutes

Downtown Tacoma: 15 Minutes