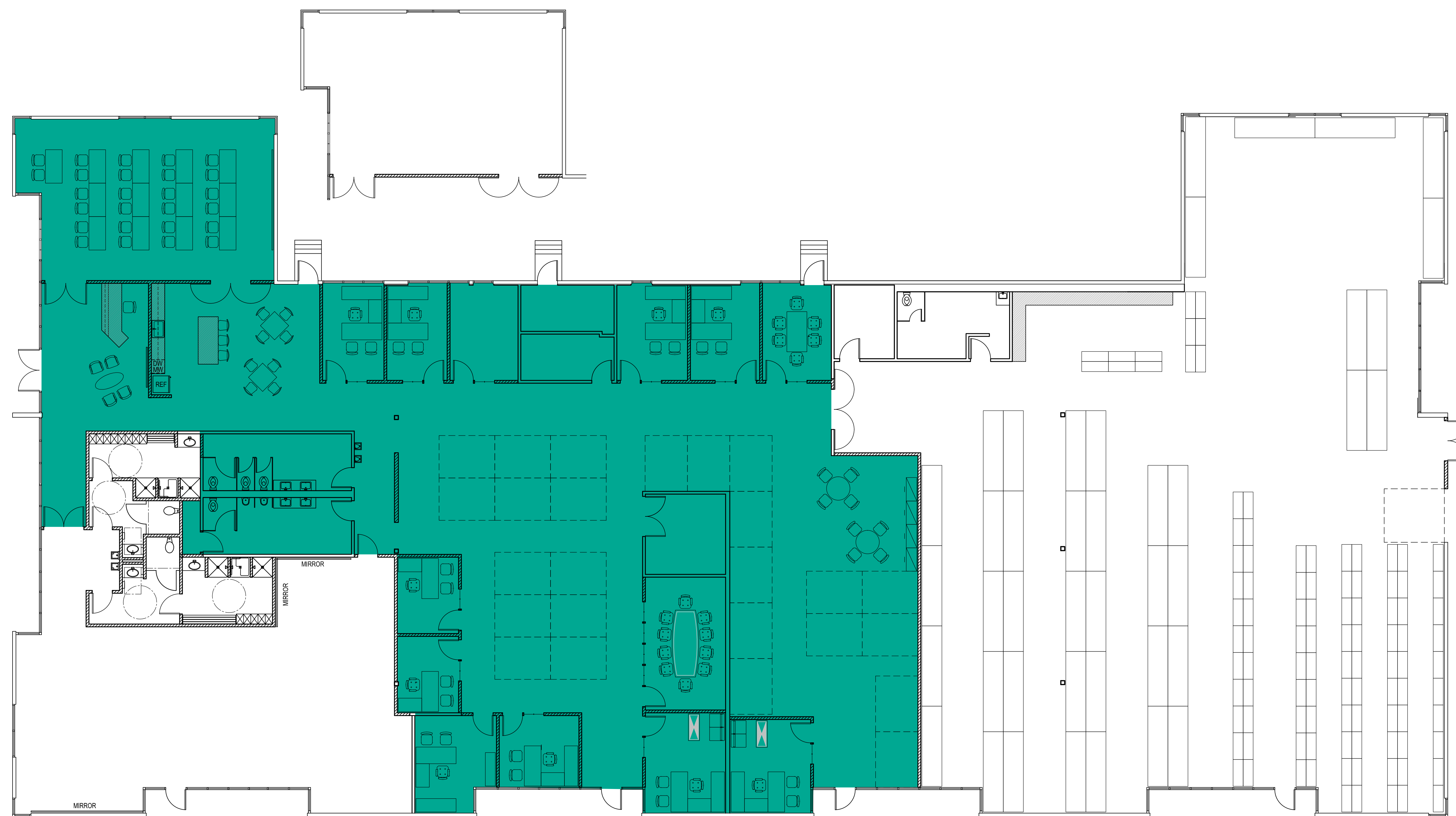


STERLING
BUSINESS PARK
BUILDING F

8225 44TH AVENUE W
MUKILTEO, WA 98275



LEGEND

- EXISTING CORRIDOR PARTITION
- EXISTING CONSTRUCTION TO REMAIN
- NEW TENANT INTERIOR PARTITION
- NEW CASEWORK
- NEW DOOR
- NEW DOOR AND FULL HEIGHT RELITE

KEYNOTES

- ① NEW ROLL-UP DOOR AT THIS LOCATION.

① FIRST FLOOR PLAN

1/8" = 1'-0"



MSA
MARVIN STEIN ASSOCIATES

1300 WESTLAKE AVE N. SUITE ONE, SEATTLE WA, 98109 (206) 441-1449

DRAWN BY: EJ / TA

CHECKED BY: KF

JOB NO.: 14052.005

NO.	REVISIONS INDICATED THUS	DATE	BY
	SPACE STUDY ISSUED	02/08/16	KF
	SPACE STUDY ISSUED	02/19/16	KF
	SPACE STUDY ISSUED	02/25/16	KF

TENANT:

SPORTS ART

SHEET TITLE:

SPACE STUDY
REVISED OPTION 1

REPRODUCTION, ALTERATION OR PUBLICATION OF THIS DRAWING WITHOUT EXPRESSED PERMISSION BY MSA, IS A VIOLATION OF FEDERAL COPYRIGHT LAW. COPYRIGHT BY MSA 2015.

Date: Feb 25, 2016
Time: 2:54:07 PM
Drawing File: Z:\BLDGS\SS-2\Sterling Business Park (Mukilteo)\Building F - 8225 44th Ave W - 01\Space Studies\SS-2\SS-021916-01.dwg
User: kfs

STERLING BUSINESS PARK