

RH North Creek Business Center

11810-11824 North Creek Parkway N, Bothell, WA 98011



Building 2



Building 1



Building 3

CLASS A CORPORATE IMAGE

2,157 SF - 46,096 SF Available

FEATURES:

- Office, Tech/Assembly & Flex Space Available
- Buildings 2 & 4 Contiguous for 46,096 SF Total
- Building Signage Available
- Prestigious North Creek Location
- Nearby Amenities: NEW McMenamins Anderson School, Restaurants, Retail, Childcare, Hotel, Sports Fields, Jogging & Parcourse Trails
- Quick Access to I-405, SR-522 & Downtown Bothell
- Corporate Neighbors Include Google, AT&T, T-Mobile & Puget Sound Energy



For more information, contact:

ROSEN~HARBOTTLE
COMMERCIAL REAL ESTATE

Brian Stewart

(425) 289-2222

brians@rosenharbottle.com

Caleb Farnworth, CCIM

(425) 289-2235

calebf@rosenharbottle.com

www.rosenharbottle.com

Rosen~Harbottle Commercial Real Estate | P.O. Box 5003 Bellevue, WA 98009-5003
phone: (425) 454-3030 fax: (425) 454-6705 | www.rosenharbottle.com

The information provided has been obtained from sources believed reliable. While we do not doubt its accuracy, we have not verified and make no guarantee, warranty or representation about it. It is your sole responsibility to independently confirm its accuracy and completeness.

RH North Creek Business Center

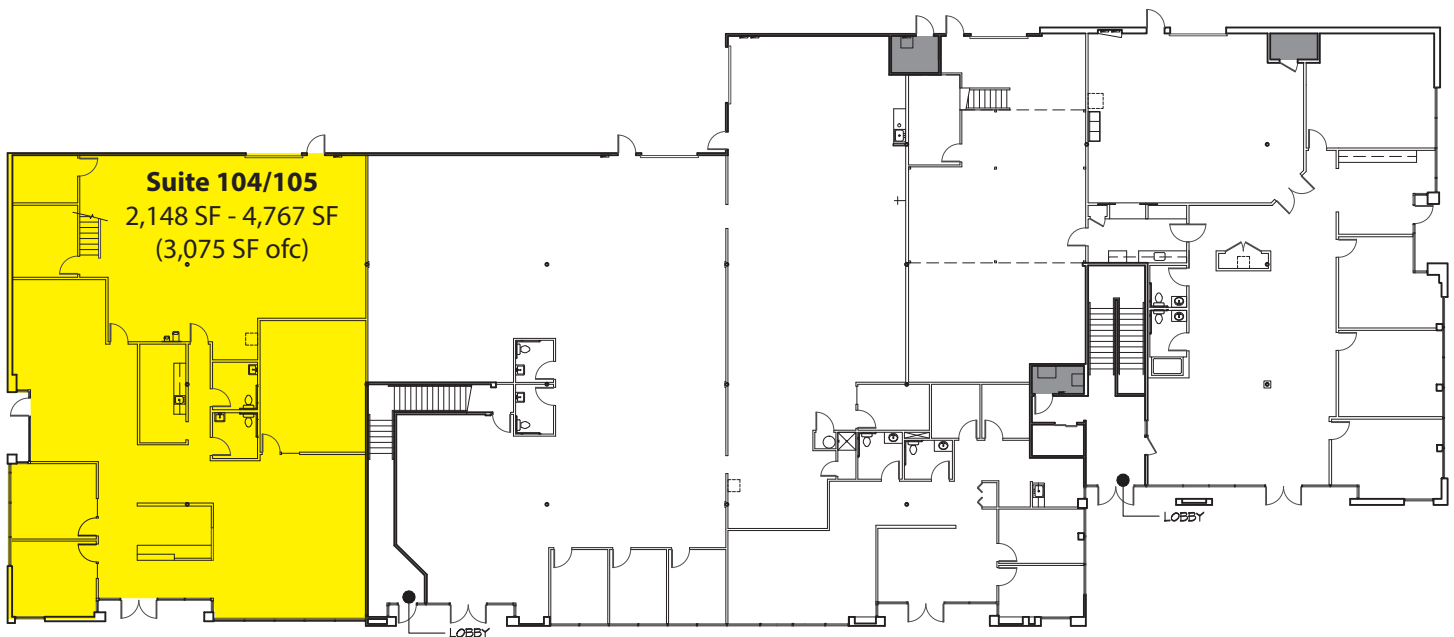
11810-11824 North Creek Parkway N, Bothell, WA 98011

Bldg-Suite	Square Feet	Available
1-104/105	2,148 SF - 4,767 SF (3,018 SF ofc) Office/warehouse space with GL loading and signage on North Creek Pkwy.	30 Days
1-202	2,157 SF 2nd floor office with 7 POs on window line, kitchenette and reception.	1/1/2017
2-100	~6,000 SF - 24,596 SF Tech/assembly: HVAC throughout & versatile loading. Contiguous with Bldg 4 for 46,096 SF total.	Now
4-100	9,800 SF - 21,500 SF Full building available; office build out. Contiguous with Bldg 2 for 46,096 SF total.	Now
6-109	2,022 SF (918 SF ofc) Open office, insulated warehouse with HVAC and improved lighting throughout, 1 RR + shower.	Now

Building 1

Suite 104/105

2,148 SF - 4,767 SF (3,075 SF ofc)



Rosen~Harbottle Commercial Real Estate | P.O. Box 5003 Bellevue, WA 98009-5003
phone: (425) 454-3030 fax: (425) 454-6705 | www.rosenharbottle.com

The information provided has been obtained from sources believed reliable. While we do not doubt its accuracy, we have not verified and make no guarantee, warranty or representation about it. It is your sole responsibility to independently confirm its accuracy and completeness.



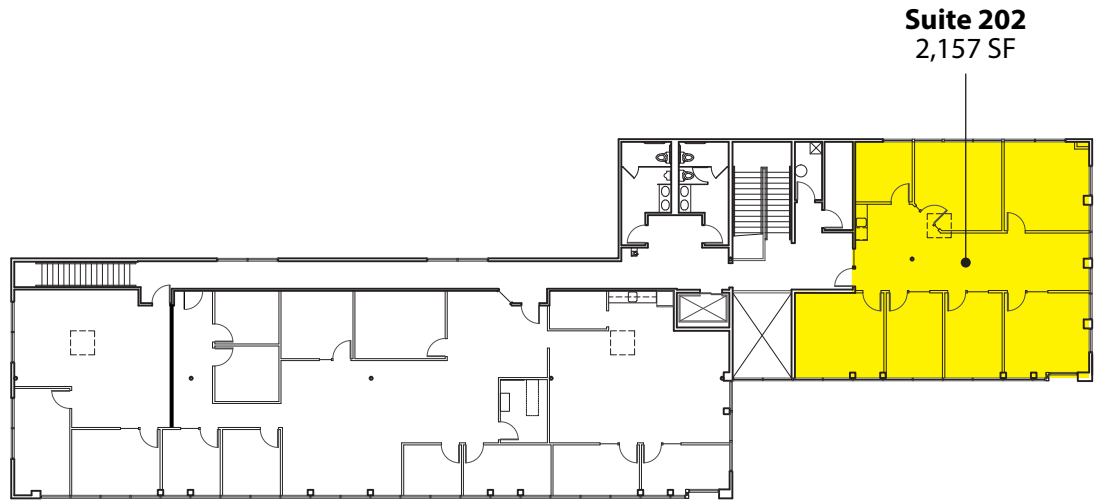
RH North Creek Business Center

11810-11824 North Creek Parkway N, Bothell, WA 98011

Building 1

Suite 202

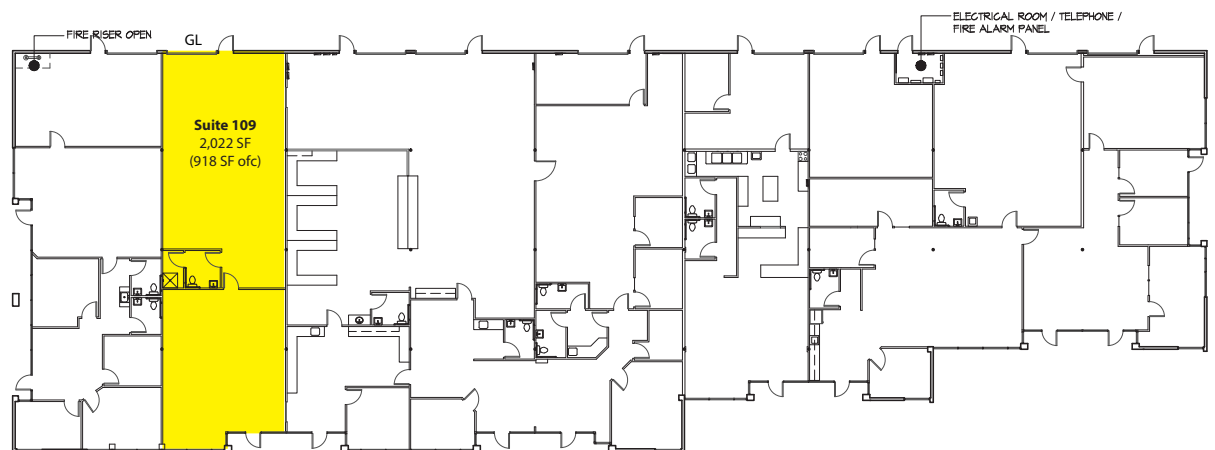
2,157 SF



Building 6

Suite 109

2,022 SF (918 SF ofc)



Rosen~Harbottle Commercial Real Estate | P.O. Box 5003 Bellevue, WA 98009-5003
phone: (425) 454-3030 fax: (425) 454-6705 | www.rosenharbottle.com

The information provided has been obtained from sources believed reliable. While we do not doubt its accuracy, we have not verified and make no guarantee, warranty or representation about it. It is your sole responsibility to independently confirm its accuracy and completeness.

RH North Creek Business Center

11810-11824 North Creek Parkway N, Bothell, WA 98011

BUILDINGS 2 AND 4 CAN BE LEASED TOGETHER FOR 46,096 SF TOTAL

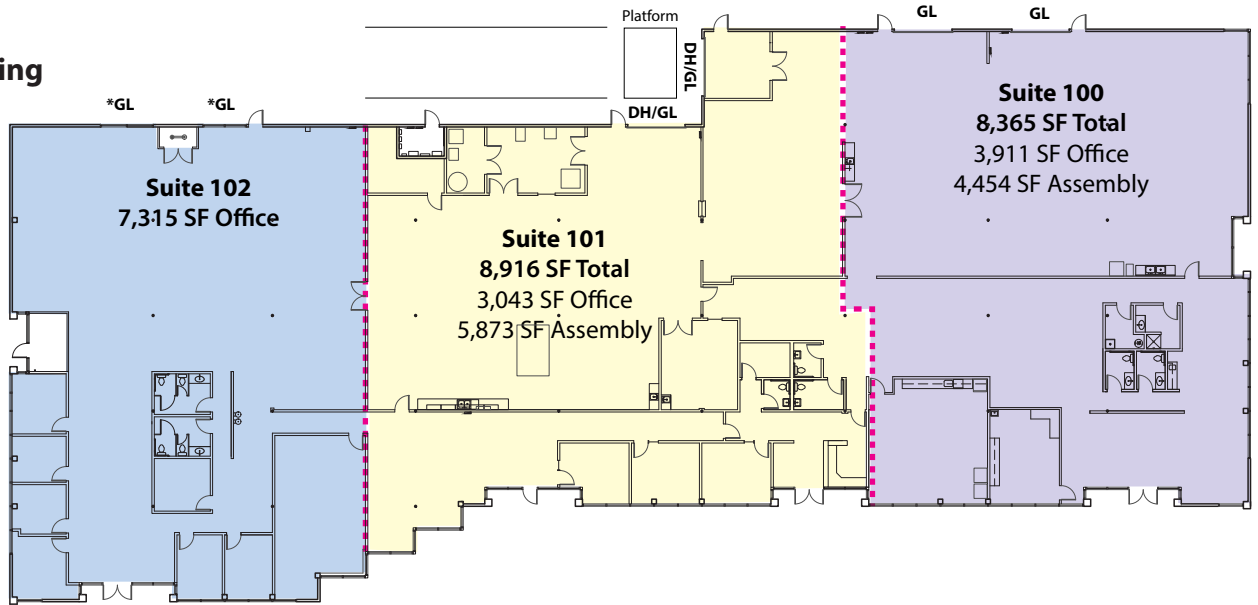
Building 2

24,596 SF Full Building

Suite 100
8,365 SF

Suite 101
8,916 SF

Suite 102
7,315 SF



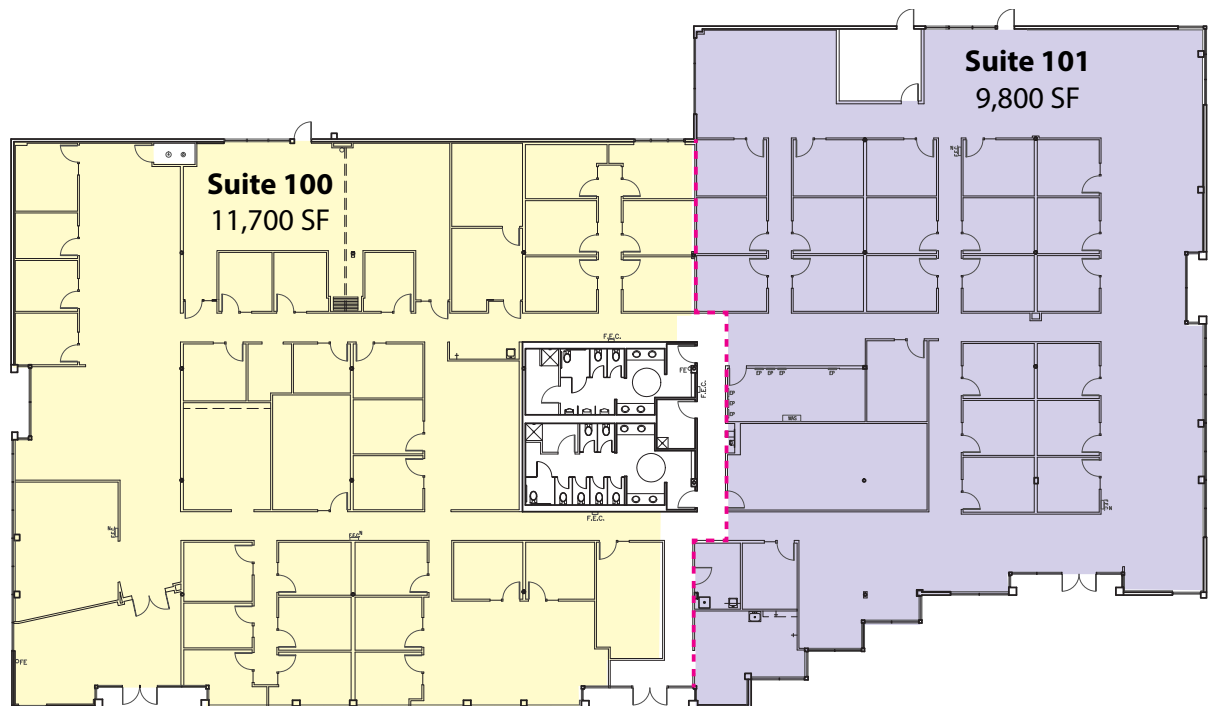
Floor plan is a sample only. Space can be demised to ~6,000 SF

Building 4

21,500 SF Full Building

Suite 100
11,700 SF

Suite 101
9,800 SF



Rosen~Harbottle Commercial Real Estate | P.O. Box 5003 Bellevue, WA 98009-5003
phone: (425) 454-3030 fax: (425) 454-6705 | www.rosenharbottle.com

The information provided has been obtained from sources believed reliable. While we do not doubt its accuracy, we have not verified and make no guarantee, warranty or representation about it. It is your sole responsibility to independently confirm its accuracy and completeness.



RH North Creek Business Center

11810-11824 North Creek Parkway N, Bothell, WA 98011



**RH North Creek
Business Center**

Corporate Neighbors

- | | | |
|----------------------------|-------------------------------|------------------------|
| 1. AT&T | 6. AT&T | 11. Talentwise |
| 2. General Dynamics | 7. United Healthcare Services | 12. Tetra Tech |
| 3. Valeant Pharmaceuticals | 8. Progressive, Banner Bank | 13. T-Mobile |
| 4. AMEC | 9. Vertafore | 14. Puget Sound Energy |
| 5. Google | 10. State Farm | 15. HUB International |

Rosen~Harbottle Commercial Real Estate | P.O. Box 5003 Bellevue, WA 98009-5003
phone: (425) 454-3030 fax: (425) 454-6705 | www.rosenharbottle.com

The information provided has been obtained from sources believed reliable. While we do not doubt its accuracy, we have not verified and make no guarantee, warranty or representation about it. It is your sole responsibility to independently confirm its accuracy and completeness.