

RETAIL
LEASE



CASINO SQUARE SHOPPING CENTER

205 E Casino Rd | Everett, WA

Grant Rubenstein

425.289.2220

grant@rosenharbottle.com

Brian Stewart

425.289.2222

brians@rosenharbottle.com

425.454.3030
rosenharbottle.com

PO Box 5003
Bellevue, WA 98009 - 5003





FULLY IMPROVED END CAP RETAIL SPACE

\$16.00/SF, NNN

2,223 SF Available

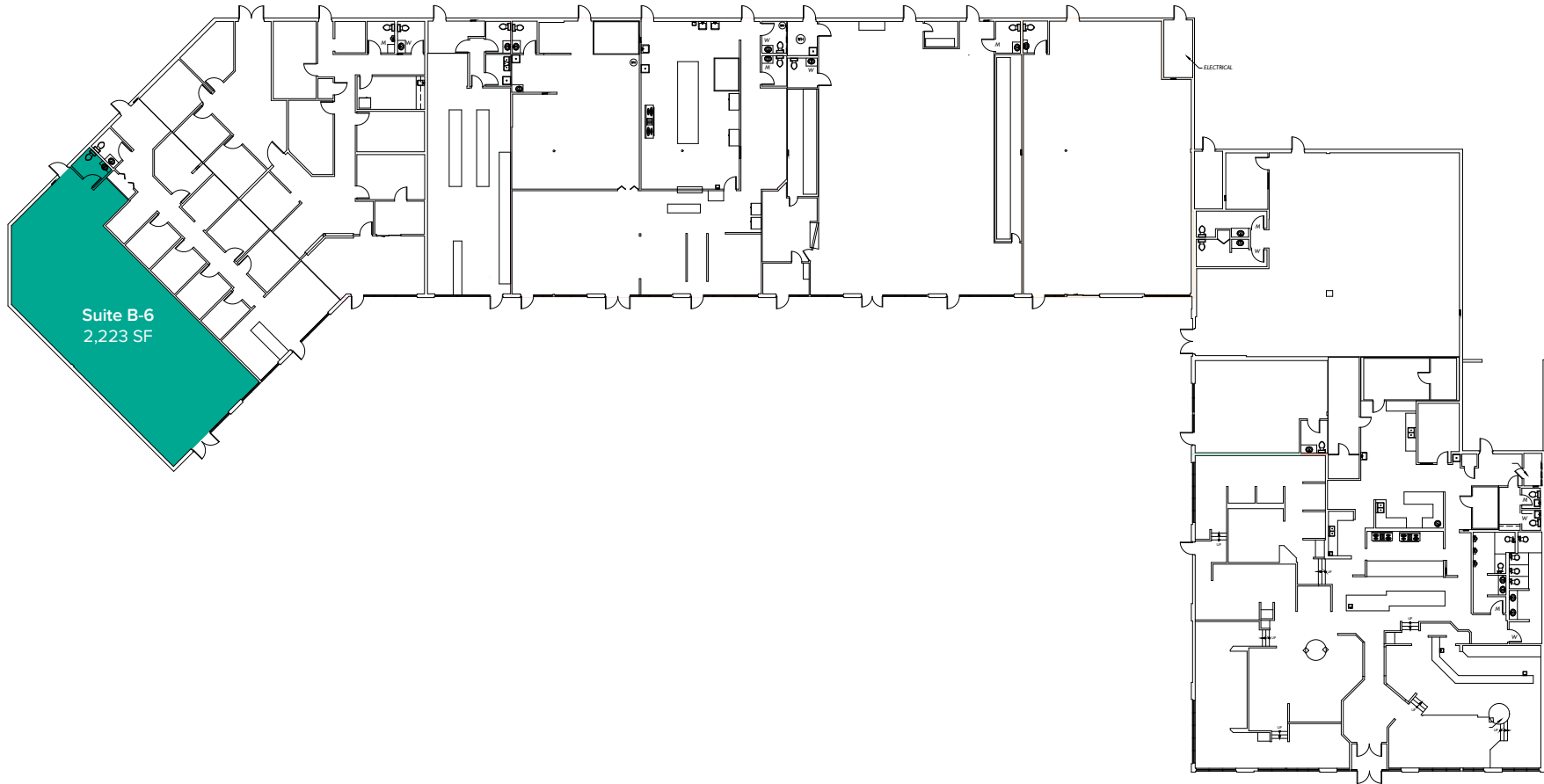
BUILDING DETAILS:

- Across the Street from Fred Meyer
- 1 Block from High-Traffic Intersection of Evergreen Way
- Motivated Landlord
- Abundant Parking
- Storefront and Street Signage

The information provided herein has been obtained from sources believed to be reliable, but no representation or warranty, express or implied, is made with respect to the accuracy or completeness of any such information. Each prospective buyer or tenant should independently investigate, evaluate and verify all information provided herein and any other matters deemed material. Please consult your attorney, tax advisor or other professional advisor. The terms of sale or lease set forth herein are subject to change or withdrawal at any time and without notice.

FLOOR PLAN

Suite	Square Feet	Rate	Notes
B-6	2,223 SF	\$16.00/SF, NNN	Fully improved End cap retail space with HVAC and 1 restroom. Available now.



The information provided herein has been obtained from sources believed to be reliable, but no representation or warranty, express or implied, is made with respect to the accuracy or completeness of any such information. Each prospective buyer or tenant should independently investigate, evaluate and verify all information provided herein and any other matters deemed material. Please consult your attorney, tax advisor or other professional advisor. The terms of sale or lease set forth herein are subject to change or withdrawal at any time and without notice.

LOCATION MAP

