

# MEADOW CREEK OFFICE PARK

22500-22619 SE 64<sup>th</sup> Place, Issaquah, WA 98027



## CLASS A OFFICE / MEDICAL SPACE

1,612 SF & 1,668 SF Available

\$29.00/SF, NNN - MEDICAL

\$25.00/SF, NNN - OFFICE

### FEATURES:

- Minutes from Costco Headquarters
- Class A Finishes
- Amazing Location off I-90 at Front St./E Lake Sammamish Pkwy
- Nearby Amenities Include Retailers, Grocers, Restaurants, Hospital & Parks
- Private Balcony & Free Surface Parking
- Park-Like, Campus Setting

For more information, contact:

**ROSEN~HARBOTTLE  
COMMERCIAL REAL ESTATE**

**Brian Stewart**

(425) 289-2222

brians@rosenharbottle.com

www.rosenharbottle.com

Rosen~Harbottle Commercial Real Estate | P.O. Box 5003 Bellevue, WA 98009-5003  
phone: (425) 454-3030 fax: (425) 454-6705 | www.rosenharbottle.com

The information provided has been obtained from sources believed reliable. While we do not doubt its accuracy, we have not verified and make no guarantee, warranty or representation about it. It is your sole responsibility to independently confirm its accuracy and completeness.

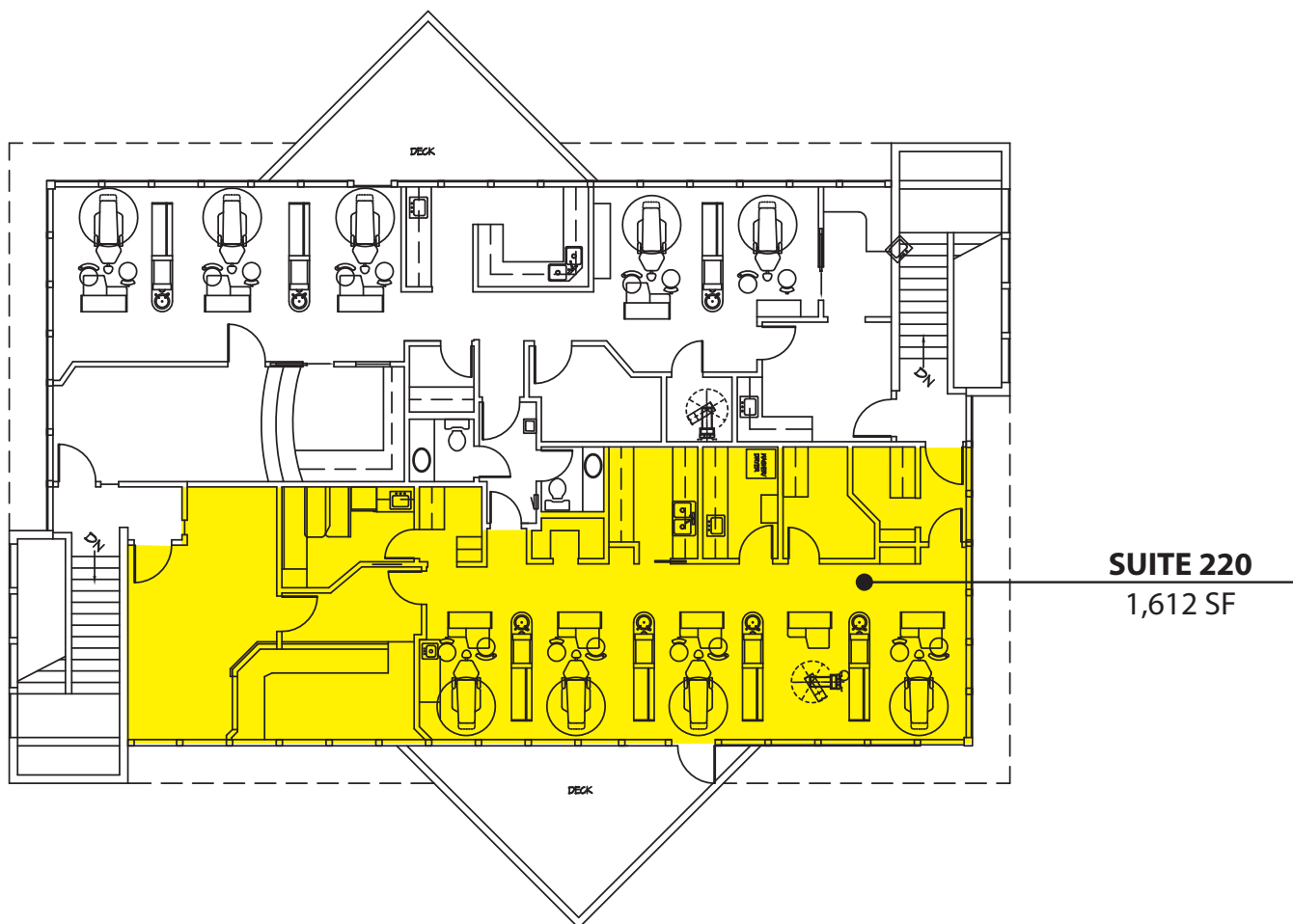
# MEADOW CREEK OFFICE PARK

22500-22619 SE 64<sup>th</sup> Place, Issaquah, WA 98027

Building B - Second Floor

<b>SUITE</b>	<b>SF</b>
Suite 220	1,612 SF

Notes: Full dental build out. Air compressors also available.



Rosen~Harbottle Commercial Real Estate | P.O. Box 5003 Bellevue, WA 98009-5003  
phone: (425) 454-3030 fax: (425) 454-6705 | [www.rosenharbottle.com](http://www.rosenharbottle.com)

The information provided has been obtained from sources believed reliable. While we do not doubt its accuracy, we have not verified and make no guarantee, warranty or representation about it. It is your sole responsibility to independently confirm its accuracy and completeness.



# MEADOW CREEK OFFICE PARK

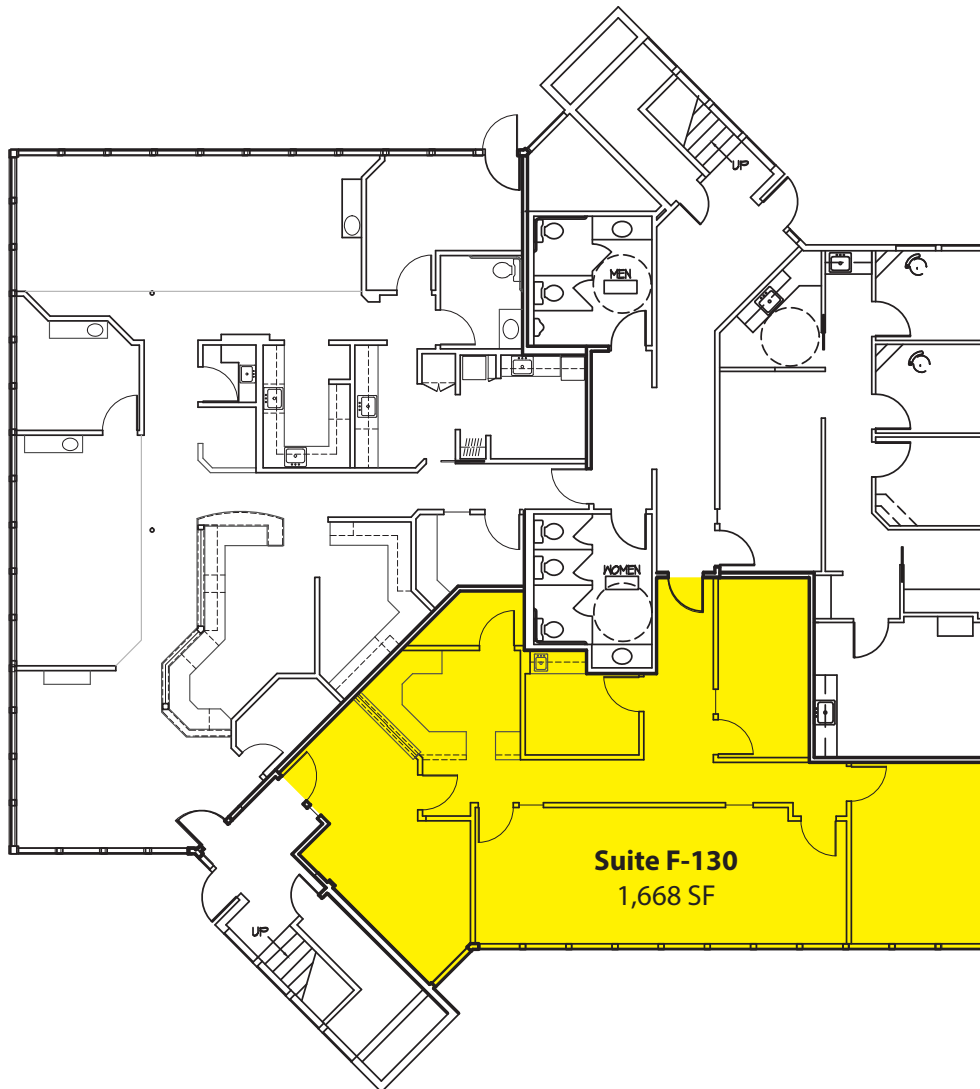
22500-22619 SE 64<sup>th</sup> Place, Issaquah, WA 98027

## Building F - First Floor

<b>SUITE</b>	<b>SF</b>
Suite 130	1,668 SF

Available 10/1/2017

Notes: 2 POs, reception, kitchenette and conference room. Great natural light.

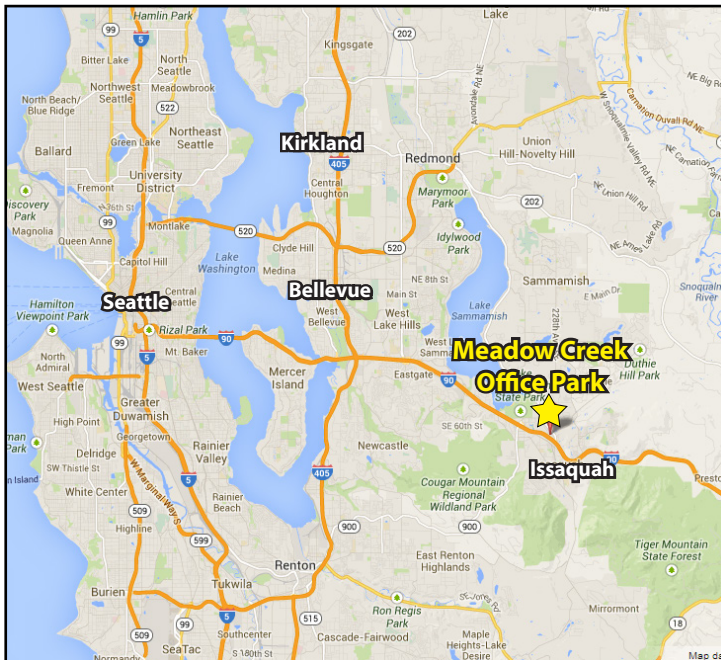


Rosen~Harbottle Commercial Real Estate | P.O. Box 5003 Bellevue, WA 98009-5003  
phone: (425) 454-3030 fax: (425) 454-6705 | [www.rosenharbottle.com](http://www.rosenharbottle.com)

The information provided has been obtained from sources believed reliable. While we do not doubt its accuracy, we have not verified and make no guarantee, warranty or representation about it. It is your sole responsibility to independently confirm its accuracy and completeness.

# MEADOW CREEK OFFICE PARK

22500-22619 SE 64<sup>th</sup> Place, Issaquah, WA 98027



For more information, contact:

**ROSEN~HARBOTTLE  
COMMERCIAL REAL ESTATE**

**Brian Stewart**  
(425) 289-2222  
brians@rosenharbottle.com  
www.rosenharbottle.com

Rosen~Harbottle Commercial Real Estate | P.O. Box 5003 Bellevue, WA 98009-5003  
phone: (425) 454-3030 fax: (425) 454-6705 | www.rosenharbottle.com

The information provided has been obtained from sources believed reliable. While we do not doubt its accuracy, we have not verified and make no guarantee, warranty or representation about it. It is your sole responsibility to independently confirm its accuracy and completeness.