

# RH North Creek Business Center

11810-11824 North Creek Parkway N, Bothell, WA 98011



Building 2



Building 1



Building 3

## CLASS A CORPORATE IMAGE

1,396 SF - 46,205 SF Available

### FEATURES:

- Office, Tech/Assembly & Flex Space Available
- Buildings 2 & 4 Contiguous for 46,205 SF Total
- Building Signage Available
- Prestigious North Creek Location
- Nearby Amenities: NEW McMenamins Anderson School, Restaurants, Retail, Childcare, Hotel, Sports Fields, Jogging & Parcourse Trails
- Quick Access to I-405, SR-522 & Downtown Bothell
- Corporate Neighbors Include Google, AT&T, T-Mobile & Puget Sound Energy



For more information, contact:

ROSEN~HARBOTTLE  
COMMERCIAL REAL ESTATE

**Brian Stewart**

(425) 289-2222

brians@rosenharbottle.com

**Caleb Farnworth, CCIM**

(425) 289-2235

calebf@rosenharbottle.com

www.rosenharbottle.com

Rosen~Harbottle Commercial Real Estate | P.O. Box 5003 Bellevue, WA 98009-5003  
phone: (425) 454-3030 fax: (425) 454-6705 | www.rosenharbottle.com

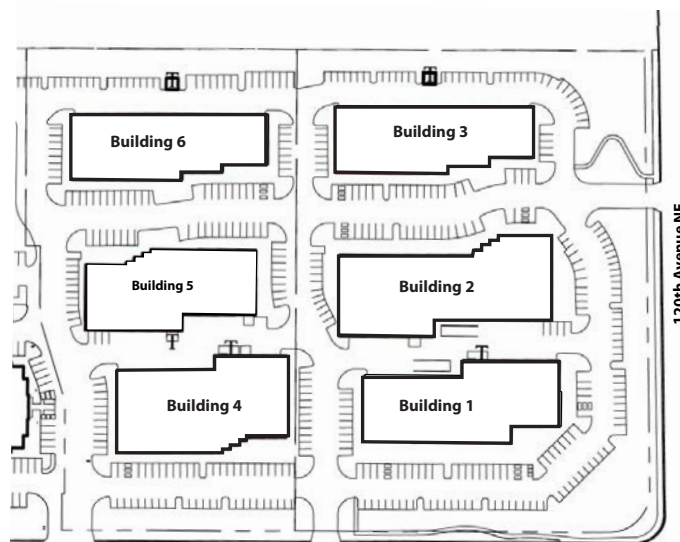
The information provided has been obtained from sources believed reliable. While we do not doubt its accuracy, we have not verified and make no guarantee, warranty or representation about it. It is your sole responsibility to independently confirm its accuracy and completeness.

# RH North Creek Business Center

11810-11824 North Creek Parkway N, Bothell, WA 98011

Bldg-Suite	Square Feet	Available
1-101	3,975 SF-6,155 SF (3,975 SF ofc)	Now
Tech/assembly space with hood, plumbing. Office with POs, storage, break room, conference room.		
2-100	7,421 SF - 24,705 SF	Now
Tech/assembly: HVAC throughout & versatile loading. Contiguous with Bldg 4 for 46,205 SF total.		
3-102	2,016 SF (533 SF ofc)	4/1/2016
Office/warehouse space.		
3-103	3,644 SF (1,632 SF ofc)	4/1/2016
Office/warehouse space. Divisible to ~1,822 SF.		
3-104/105	10,810 SF (8,264 SF ofc)	Now
Office/warehouse space with GL loading.		
4-100	9,800 SF - 21,500 SF	Now
Full building available; office build out. Contiguous with Bldg 2 for 46,205 SF total.		

## Site Plan



North Creek Parkway N

Rosen~Harbottle Commercial Real Estate | P.O. Box 5003 Bellevue, WA 98009-5003  
 phone: (425) 454-3030 fax: (425) 454-6705 | [www.rosenharbottle.com](http://www.rosenharbottle.com)

The information provided has been obtained from sources believed reliable. While we do not doubt its accuracy, we have not verified and make no guarantee, warranty or representation about it. It is your sole responsibility to independently confirm its accuracy and completeness.



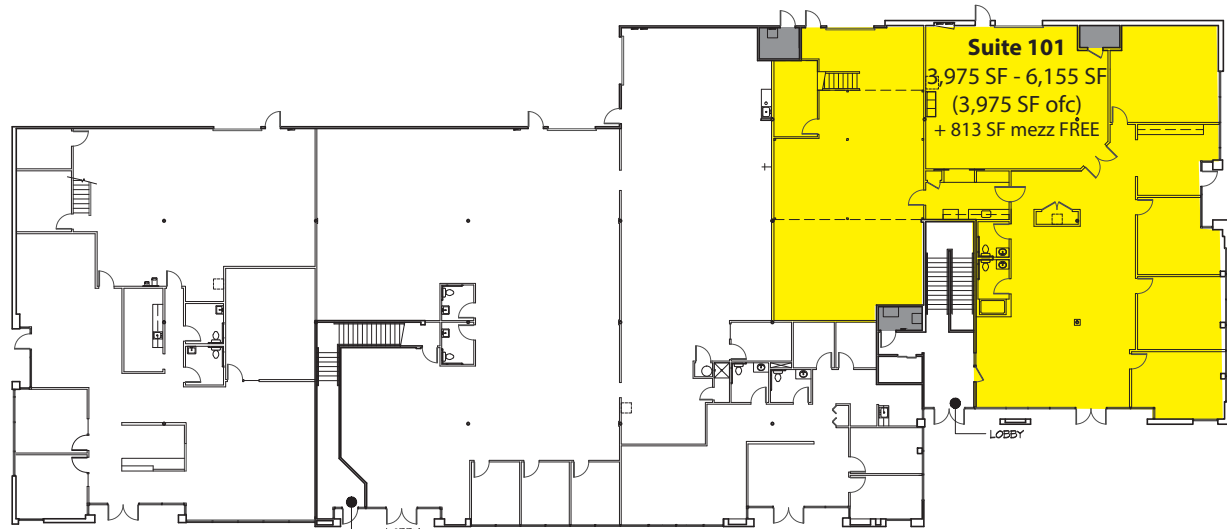
# RH North Creek Business Center

11810-11824 North Creek Parkway N, Bothell, WA 98011

## Building 1 - First Floor

### Suite 101

3,975 SF-6,155 SF (3,975 SF ofc)



## Building 2

### 24,705 SF Full Building

#### Suite 100

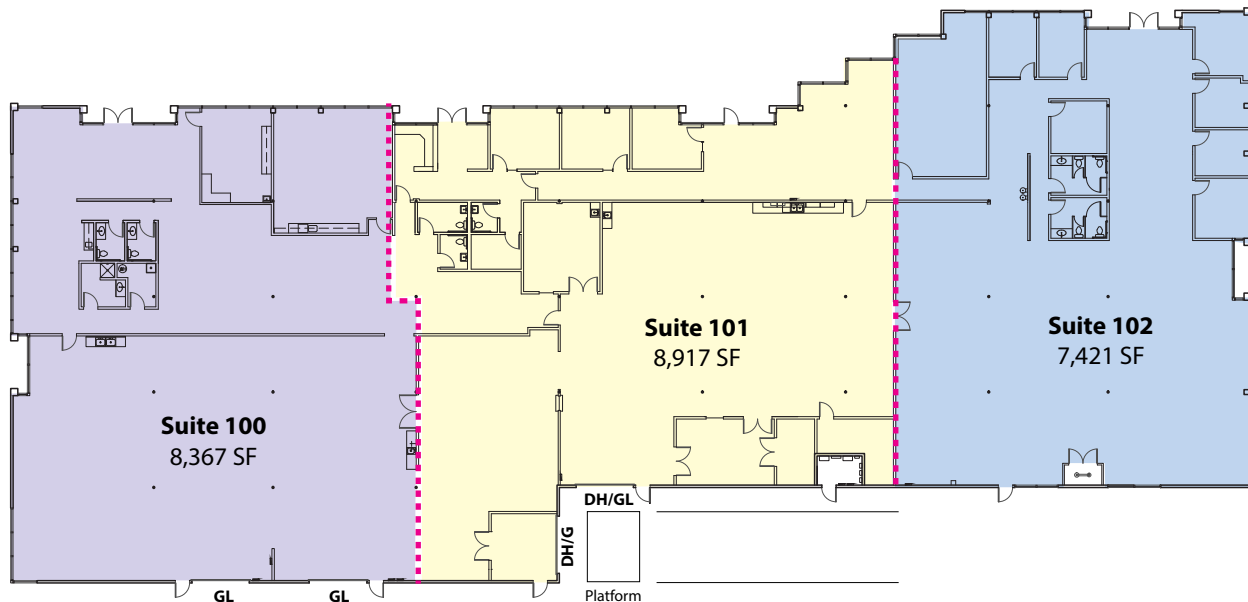
8,367 SF

#### Suite 101

8,917 SF

#### Suite 102

7,421 SF



Rosen~Harbottle Commercial Real Estate | P.O. Box 5003 Bellevue, WA 98009-5003  
phone: (425) 454-3030 fax: (425) 454-6705 | [www.rosenharbottle.com](http://www.rosenharbottle.com)

The information provided has been obtained from sources believed reliable. While we do not doubt its accuracy, we have not verified and make no guarantee, warranty or representation about it. It is your sole responsibility to independently confirm its accuracy and completeness.

# RH North Creek Business Center

11810-11824 North Creek Parkway N, Bothell, WA 98011

## Building 3

### Suite 102

2,016 SF (533 SF ofc)

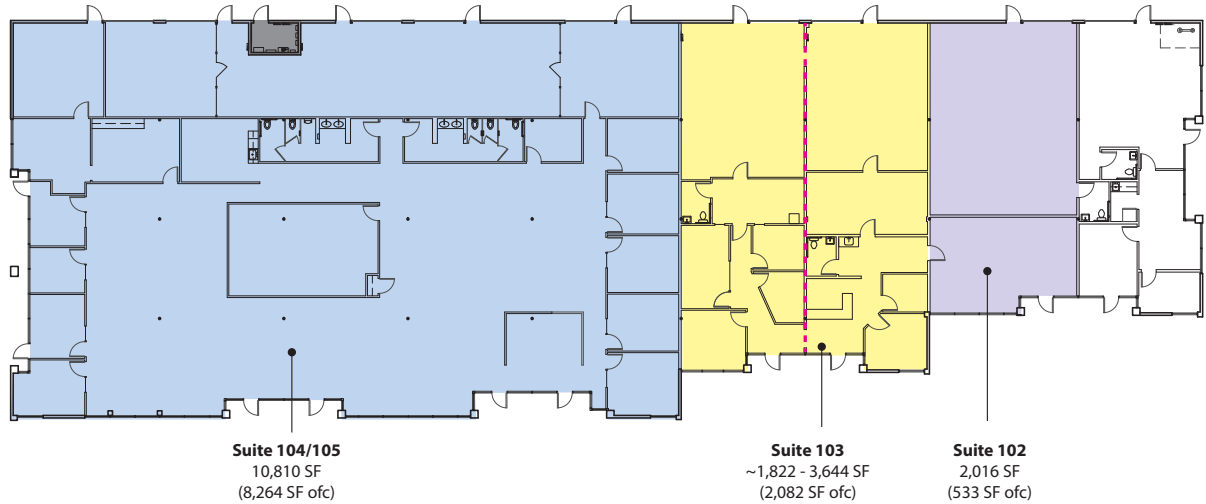
### Suite 103

3,644 SF (2,082 SF ofc)

- div to ~1,822 SF

### Suite 104/105

10,810 SF (8,264 SF ofc)



## Building 4

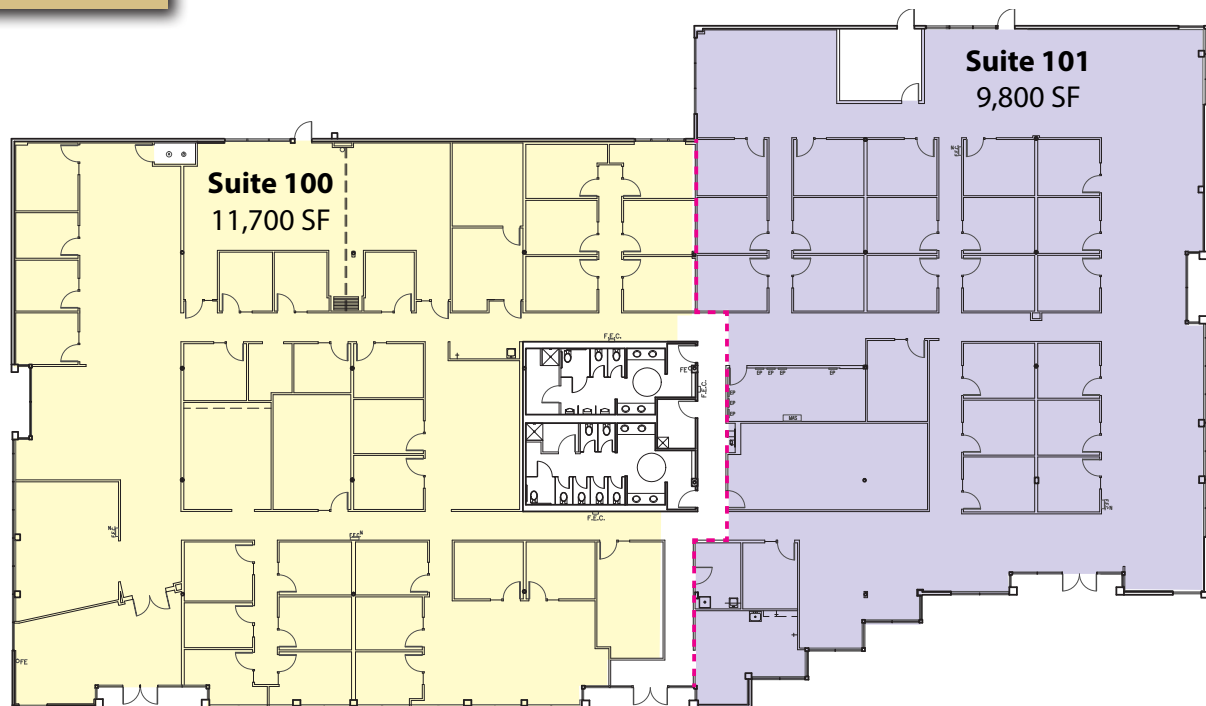
21,500 SF Full Building

### Suite 100

11,700 SF

### Suite 101

9,800 SF



Rosen~Harbottle Commercial Real Estate | P.O. Box 5003 Bellevue, WA 98009-5003  
phone: (425) 454-3030 fax: (425) 454-6705 | [www.rosenharbottle.com](http://www.rosenharbottle.com)

The information provided has been obtained from sources believed reliable. While we do not doubt its accuracy, we have not verified and make no guarantee, warranty or representation about it. It is your sole responsibility to independently confirm its accuracy and completeness.



# RH North Creek Business Center

11810-11824 North Creek Parkway N, Bothell, WA 98011



**RH North Creek  
Business Center**

## Corporate Neighbors

- |                            |                               |                        |
|----------------------------|-------------------------------|------------------------|
| 1. AT&T                    | 6. AT&T                       | 11. Talentwise         |
| 2. General Dynamics        | 7. United Healthcare Services | 12. Tetra Tech         |
| 3. Valeant Pharmaceuticals | 8. Progressive, Banner Bank   | 13. T-Mobile           |
| 4. AMEC                    | 9. Vertafore                  | 14. Puget Sound Energy |
| 5. Google                  | 10. State Farm                | 15. HUB International  |

Rosen~Harbottle Commercial Real Estate | P.O. Box 5003 Bellevue, WA 98009-5003  
phone: (425) 454-3030 fax: (425) 454-6705 | [www.rosenharbottle.com](http://www.rosenharbottle.com)

The information provided has been obtained from sources believed reliable. While we do not doubt its accuracy, we have not verified and make no guarantee, warranty or representation about it. It is your sole responsibility to independently confirm its accuracy and completeness.