

BONNEY LAKE VILLAGE SHOPPING CENTER

21107-21291 State Route 410 E, Bonney Lake, WA 98391



SAFeway ANCHORED RETAIL CENTER

607 SF - 10,951 SF Available

\$11.00/SF - \$24.00/SF, NNN

FEATURES:

- Former Restaurant Ready for New Operator (1,264 SF) (pg 3)
- Outdoor Daycare/Play Area Available (pg 4)
- New Executive Suites - Construction Underway (pg 5)
- Frontage on SR 410
- Neighboring Anchors: New Walmart, Fred Meyer, Lowe's & Home Depot
- Tenants Include Ben Franklin, PetPros, Goodwill, Great Clips, Burger King & Taco Bell
- 44,000+ Cars per Day on SR 410



For more information, contact:

ROSEN~HARBOTTLE
COMMERCIAL REAL ESTATE

Jack Rosen

(425) 289-2221

jack@rosenharbottle.com

Brian Stewart

(425) 289-2222

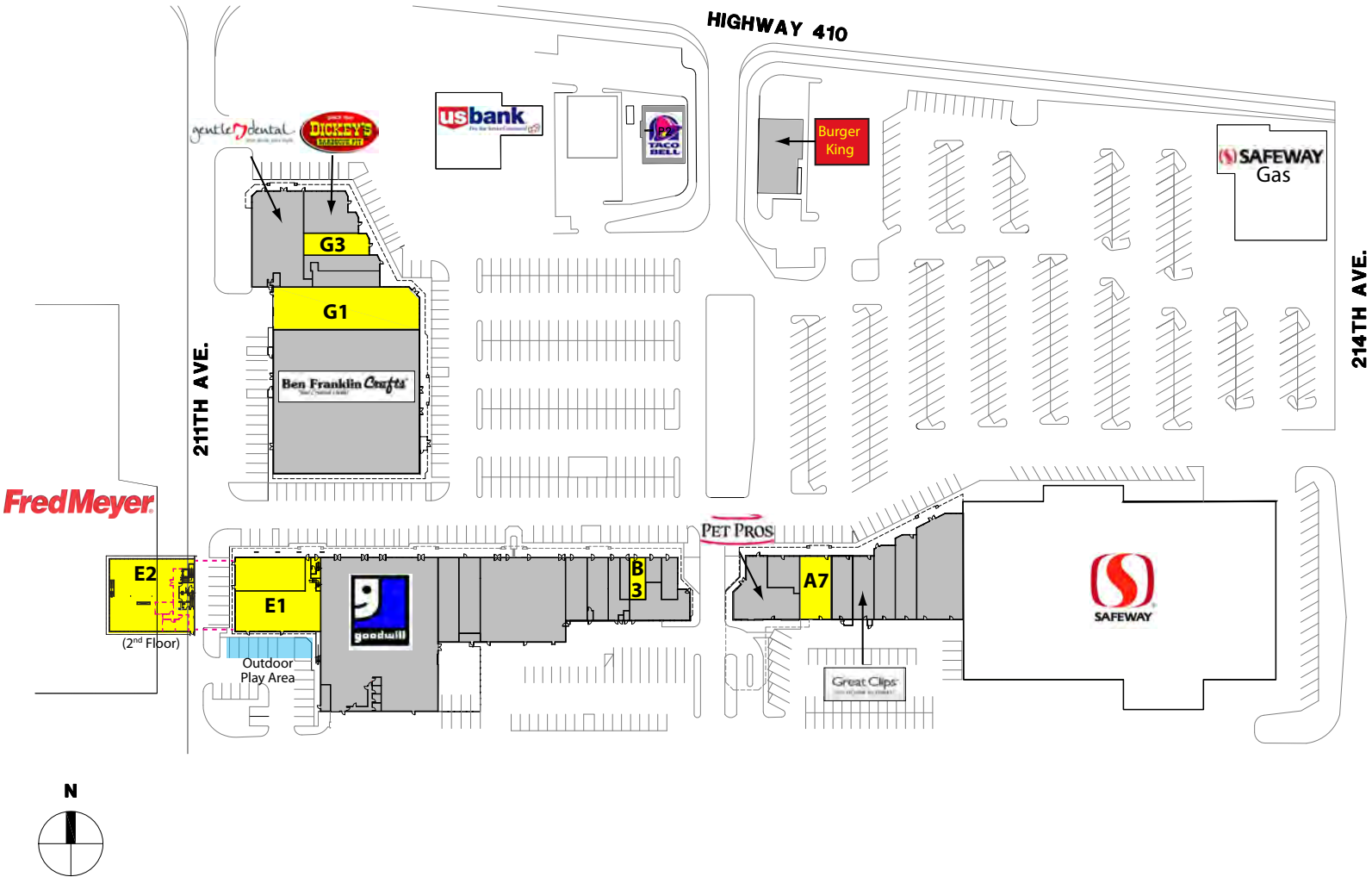
brians@rosenharbottle.com

Rosen~Harbottle Commercial Real Estate | P.O. Box 5003 Bellevue, WA 98009-5003
phone: (425) 454-3030 fax: (425) 454-6705 | www.rosenharbottle.com

The information provided has been obtained from sources believed reliable. While we do not doubt its accuracy, we have not verified and make no guarantee, warranty or representation about it. It is your sole responsibility to independently confirm its accuracy and completeness.

BONNEY LAKE VILLAGE SHOPPING CENTER

21107-21291 State Route 410 E, Bonney Lake, WA 98391



SUITE	SQUARE FEET	RATE
A-7	1,800 SF	\$24.00/SF
B-3	607 SF	\$24.00/SF
E-1	5,134 SF - 10,951 SF	\$11.00/SF
E-2	5,078 SF - 5,817 SF	\$16.00/SF
G-1	5,516 SF	\$24.00/SF
G-3	1,264 SF	\$24.00/SF

Executive Suites (E2) Also Available 179 SF - 235 SF

Rosen~Harbottle Commercial Real Estate | P.O. Box 5003 Bellevue, WA 98009-5003
 phone: (425) 454-3030 fax: (425) 454-6705 | www.rosenharbottle.com

The information provided has been obtained from sources believed reliable. While we do not doubt its accuracy, we have not verified and make no guarantee, warranty or representation about it. It is your sole responsibility to independently confirm its accuracy and completeness.

BONNEY LAKE VILLAGE SHOPPING CENTER

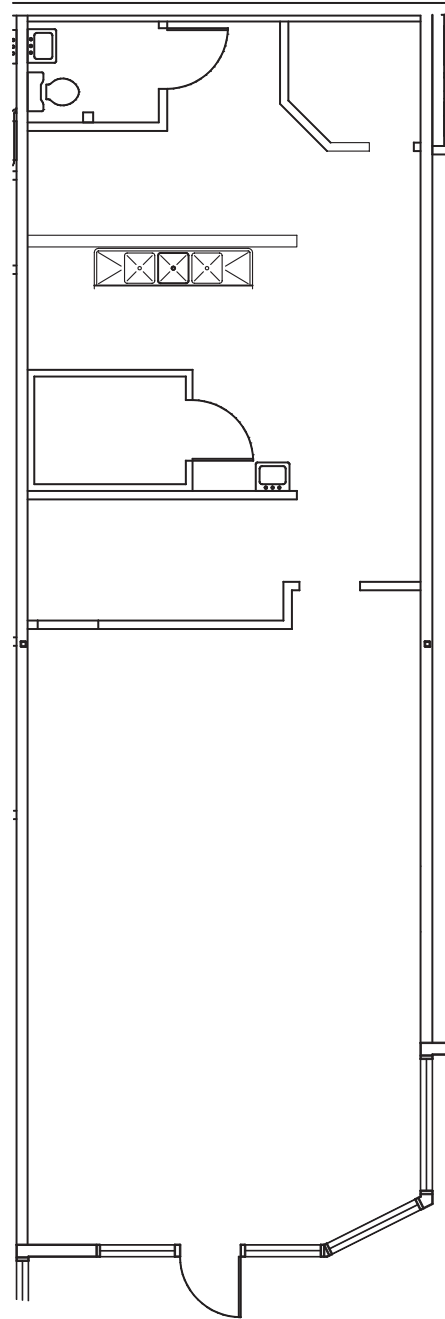
21107-21291 State Route 410 E, Bonney Lake, WA 98391

RESTAURANT SPACE - SUITE G-3

Suite	SF	Rent/SF
G-3	1,264 SF	\$24.00/SF

Features:

- Grease Trap
- Hood Venting
- Abundant Plumbing
- Floor Drains
- 1 RR - Recently Renovated



Rosen~Harbottle Commercial Real Estate | P.O. Box 5003 Bellevue, WA 98009-5003
phone: (425) 454-3030 fax: (425) 454-6705 | www.rosenharbottle.com

The information provided has been obtained from sources believed reliable. While we do not doubt its accuracy, we have not verified and make no guarantee, warranty or representation about it. It is your sole responsibility to independently confirm its accuracy and completeness.

BONNEY LAKE VILLAGE SHOPPING CENTER

21107-21291 State Route 410 E, Bonney Lake, WA 98391

ENDCAP - SUITES E-1 & E-2

UP TO 10,951 SF AVAILABLE

Suite	SF	Rent/SF
E1	5,134 SF	\$11.00/SF
E2	5,078-5,817 SF	\$16.00/SF
Contiguous	10,951 SF	\$11.00/SF

Ideal Uses:

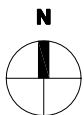
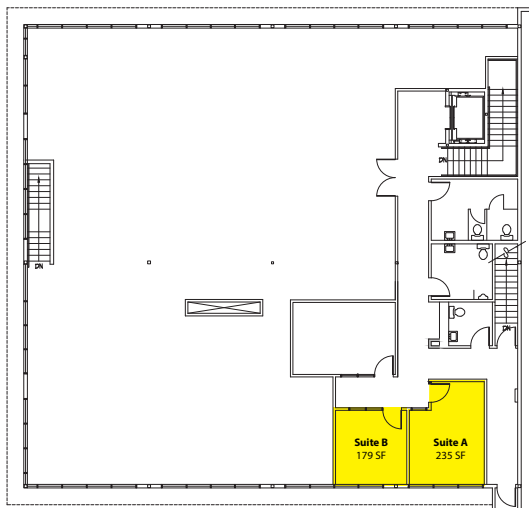
- Office, Medical, Daycare, Tutoring, Martial Arts

Features:

- Recently Renovated Space
 - New Carpet & Paint
 - Updated Kitchenette
- Great Natural Light
- Sprinklered
- Outdoor Play Area Available

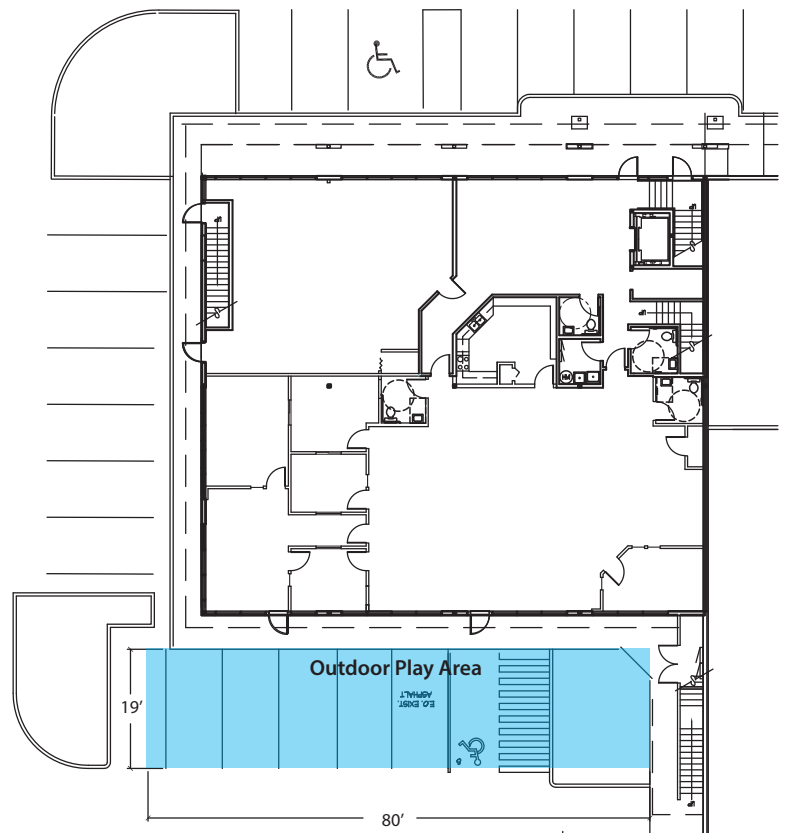
Suite E2 - Second Floor

5,078 SF - 5,817 SF



Suite E1 - First Floor

5,134 SF



Rosen~Harbottle Commercial Real Estate | P.O. Box 5003 Bellevue, WA 98009-5003
phone: (425) 454-3030 fax: (425) 454-6705 | www.rosenharbottle.com

The information provided has been obtained from sources believed reliable. While we do not doubt its accuracy, we have not verified and make no guarantee, warranty or representation about it. It is your sole responsibility to independently confirm its accuracy and completeness.

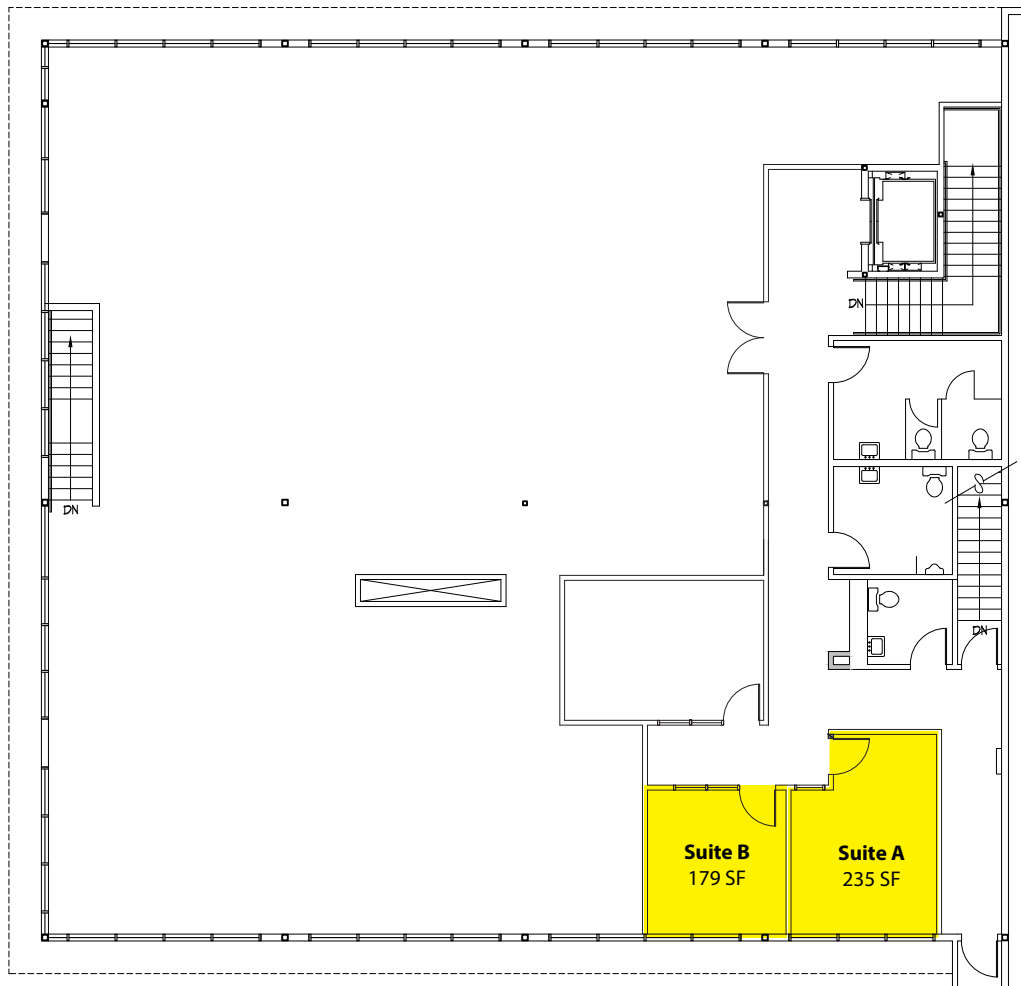
BONNEY LAKE VILLAGE SHOPPING CENTER

21107-21291 State Route 410 E, Bonney Lake, WA 98391

EXECUTIVE SUITES - SUITE E-2

Suite	SF	Rent/Month
A	235 SF	\$600, Gross
B	179 SF	\$500, Gross
C	246 SF	\$500, Gross Leased!

Rents include utilities.

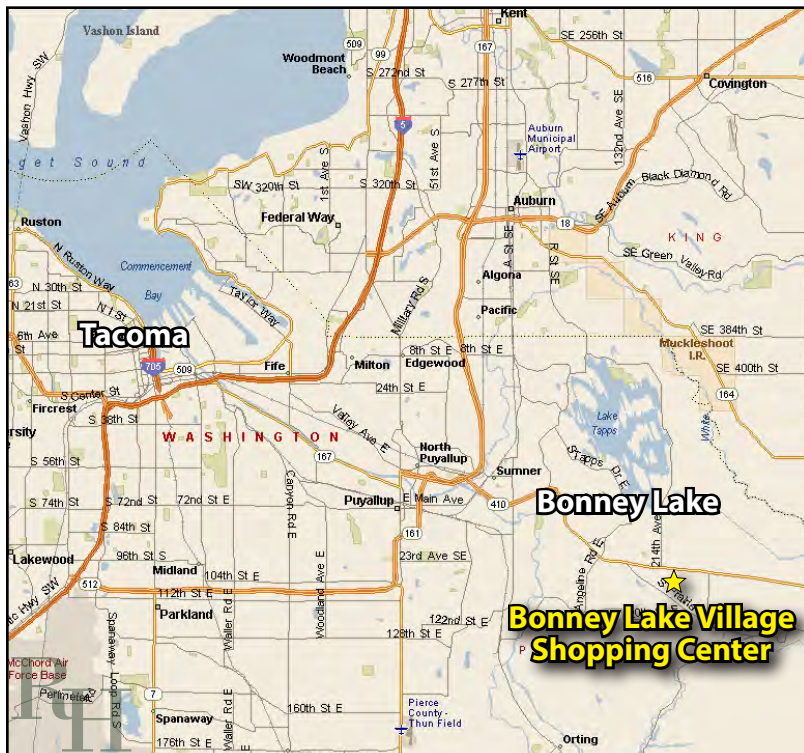


Rosen~Harbottle Commercial Real Estate | P.O. Box 5003 Bellevue, WA 98009-5003
phone: (425) 454-3030 fax: (425) 454-6705 | www.rosenharbottle.com

The information provided has been obtained from sources believed reliable. While we do not doubt its accuracy, we have not verified and make no guarantee, warranty or representation about it. It is your sole responsibility to independently confirm its accuracy and completeness.

BONNEY LAKE VILLAGE SHOPPING CENTER

21107-21291 State Route 410 E, Bonney Lake, WA 98391



For more information, contact:

**ROSEN~HARBOTTLE
COMMERCIAL REAL ESTATE**

Jack Rosen
(425) 289-2221

jack@rosenhARBottle.com

Brian Stewart
(425) 289-2222

brians@rosenhARBottle.com

Rosen~Harbottle Commercial Real Estate | P.O. Box 5003 Bellevue, WA 98009-5003
phone: (425) 454-3030 fax: (425) 454-6705 | www.rosenhARBottle.com

The information provided has been obtained from sources believed reliable. While we do not doubt its accuracy, we have not verified and make no guarantee, warranty or representation about it. It is your sole responsibility to independently confirm its accuracy and completeness.