

# ALDERWOOD EAST SHOPPING CENTER

18910-18930 28th Avenue W, Lynnwood, WA 98036



## BEST SPACE IN ALDERWOOD!

823 SF - 11,000 SF Available

\$22.00-\$26.00 / SF, NNN

### FEATURES:

- Endcap Space Facing I-5: Up to 11,000 SF
- Endcap Space Facing Alderwood Mall: 5,060 SF
- High-Exposure Retail Shopping Center
- Frontage on Alderwood Mall Blvd Near I-5
- Directly Across from Alderwood Mall
- 198,000 Cars per Day on I-5  
20,000+ Cars per Day on 28th Avenue
- Tenants Include 24 Hour Fitness, Deep Roots Tattoo, Chop It Up Barbershop & Dayspa



For more information, contact:

**ROSEN~HARBOTTLE  
COMMERCIAL REAL ESTATE**

**Jack Rosen**

(425) 289-2221

jack@rosenharbottle.com

**Grant Rubenstein**

(425) 289-2220

grant@rosenharbottle.com

www.rosenharbottle.com

Rosen-Harbottle Commercial Real Estate | P.O. Box 5003 Bellevue, WA 98009-5003  
phone: (425) 454-3030 fax: (425) 454-6705 | www.rosenharbottle.com

The information provided has been obtained from sources believed reliable. While we do not doubt its accuracy, we have not verified and make no guarantee, warranty or representation about it. It is your sole responsibility to independently confirm its accuracy and completeness.

# ALDERWOOD EAST SHOPPING CENTER

18910-18930 28th Avenue W, Lynnwood, WA 98036



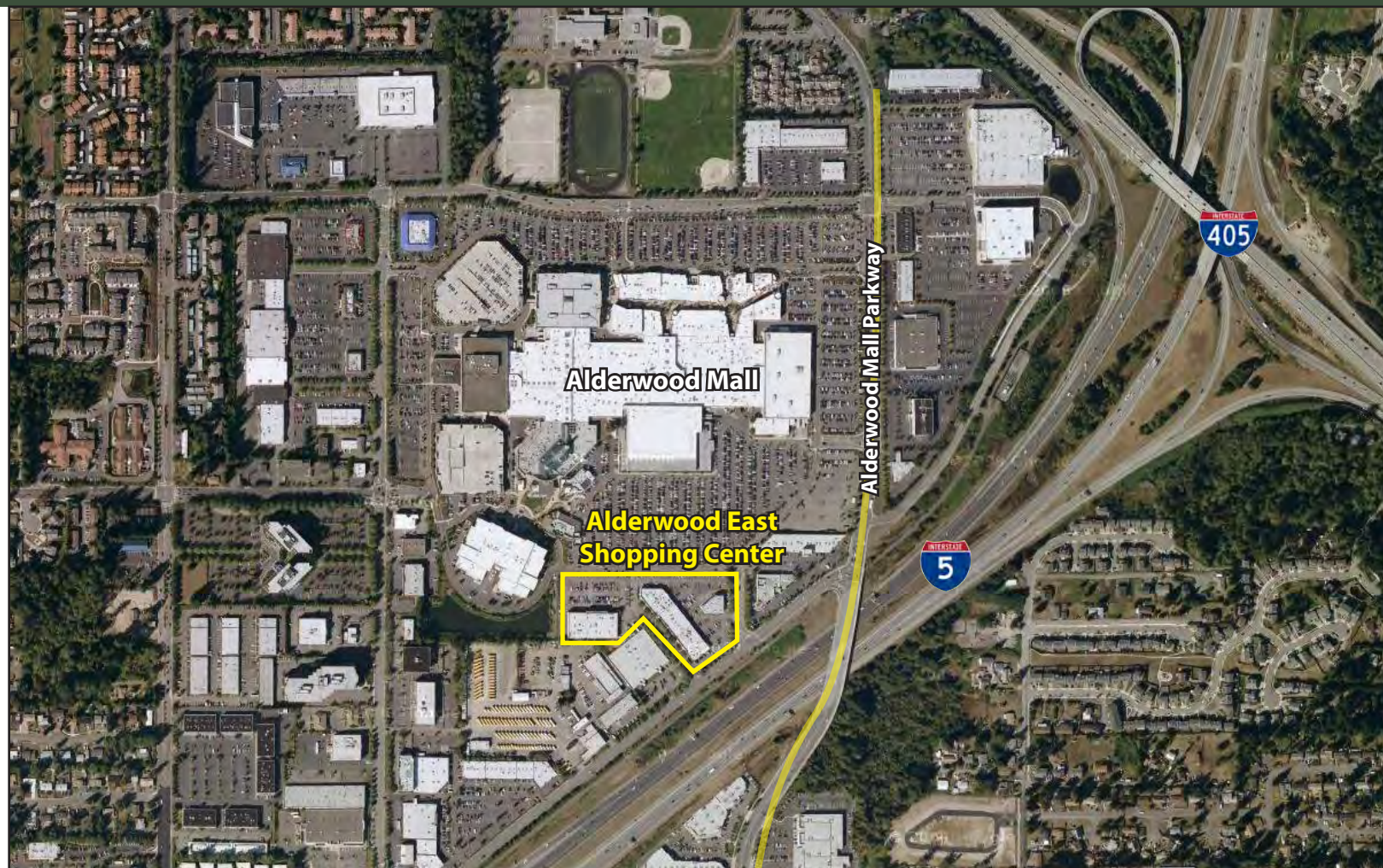
Rosen-Harbottle Commercial Real Estate | P.O. Box 5003 Bellevue, WA 98009-5003  
 phone: (425) 454-3030 fax: (425) 454-6705 | [www.rosenharbottle.com](http://www.rosenharbottle.com)

The information provided has been obtained from sources believed reliable. While we do not doubt its accuracy, we have not verified and make no guarantee, warranty or representation about it. It is your sole responsibility to independently confirm its accuracy and completeness.



# ALDERWOOD EAST SHOPPING CENTER

18910-18930 28th Avenue W, Lynnwood, WA 98036



For more information, contact:

**Rosen~Harbottle  
Commercial Real Estate**

**Jack Rosen**

(425) 289-2221

jack@rosenharbottle.com

**Grant Rubenstein**

(425) 289-2220

grant@rosenharbottle.com

www.rosenharbottle.com

Rosen-Harbottle Commercial Real Estate | P.O. Box 5003 Bellevue, WA 98009-5003  
phone: (425) 454-3030 fax: (425) 454-6705 | www.rosenharbottle.com

The information provided has been obtained from sources believed reliable. While we do not doubt its accuracy, we have not verified and make no guarantee, warranty or representation about it. It is your sole responsibility to independently confirm its accuracy and completeness.