

Park Heights Building

1800 112TH AVENUE NE, BELLEVUE, WA 98004

**FOR
LEASE**



ROSEN | HARBOTTLE
RH

For more information, contact:

**ROSEN~HARBOTTLE
COMMERCIAL REAL ESTATE**

Grant Rubenstein
(425) 289-2220
grant@rosenharbottle.com

www.rosenharbottle.com

2,730 SF & 2,807 SF Available

\$26.00 / SF, Full-Service

FEATURES:

- Highly Desirable 112th Avenue Location
- Close-In Bellevue Location
- Free Surface Parking
- Across from Hidden Valley Park
- Extensive Glass Line

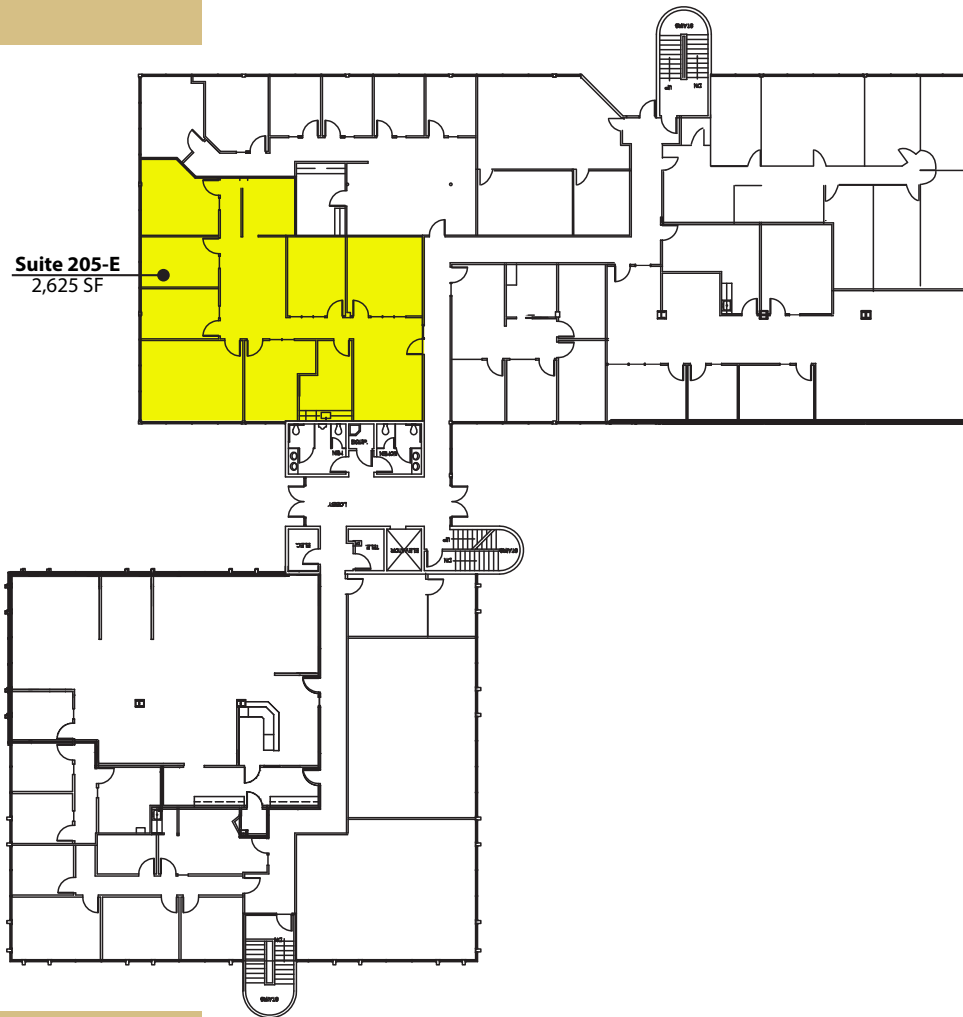
Rosen~Harbottle Commercial Real Estate | P.O. Box 5003 Bellevue, WA 98009-5003
phone: (425) 454-3030 fax: (425) 454-6705 | www.rosenharbottle.com

The information provided has been obtained from sources believed reliable. While we do not doubt its accuracy, we have not verified and make no guarantee, warranty or representation about it. It is your sole responsibility to independently confirm its accuracy and completeness.

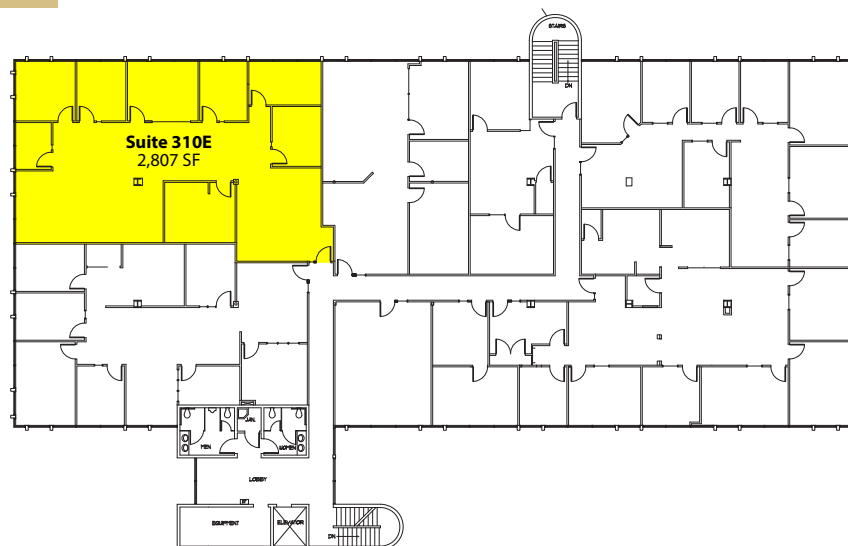
Park Heights Building

1800 112TH AVENUE NE, BELLEVUE, WA 98004

SECOND FLOOR



THIRD FLOOR



Rosen~Harbottle Commercial Real Estate | P.O. Box 5003 Bellevue, WA 98009-5003
phone: (425) 454-3030 fax: (425) 454-6705 | www.rosenharbottle.com

The information provided has been obtained from sources believed reliable. While we do not doubt its accuracy, we have not verified and make no guarantee, warranty or representation about it. It is your sole responsibility to independently confirm its accuracy and completeness.

Park Heights Building

1800 112TH AVENUE NE, BELLEVUE, WA 98004



For more information, contact:

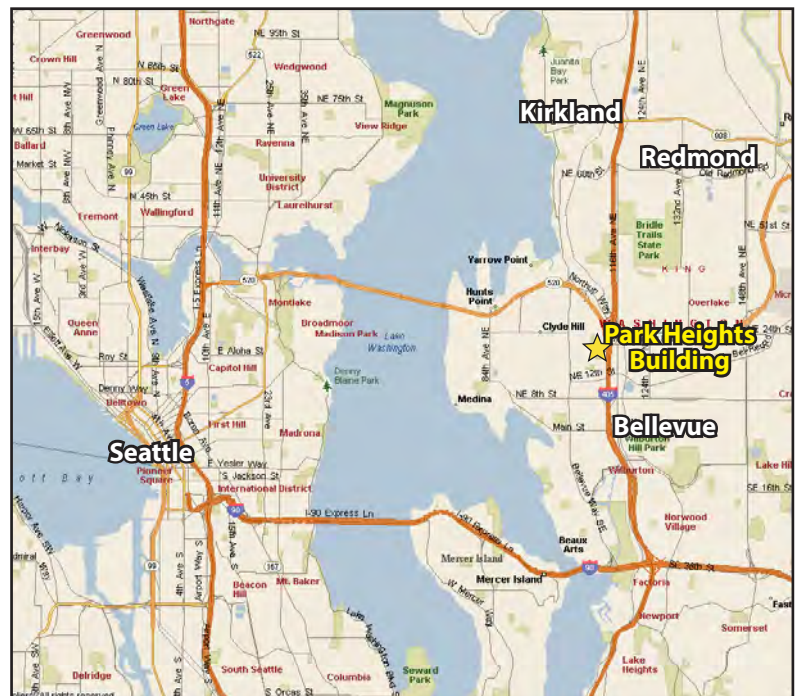
**ROSEN~HARBOTTLE
COMMERCIAL REAL ESTATE**

Grant Rubenstein

(425) 289-2220

grant@rosenharbottle.com

www.rosenharbottle.com



Rosen~Harbottle Commercial Real Estate | P.O. Box 5003 Bellevue, WA 98009-5003
phone: (425) 454-3030 fax: (425) 454-6705 | www.rosenharbottle.com

The information provided has been obtained from sources believed reliable. While we do not doubt its accuracy, we have not verified and make no guarantee, warranty or representation about it. It is your sole responsibility to independently confirm its accuracy and completeness.