

BEAR CREEK PLAZA

19011 Woodinville-Snohomish Road NE, Woodinville, WA 98072

**REDUCED RATES
through
November 2014**



Two Distinct Spaces Available

- 1 3,104 SF (Suite 200) | \$15.50/SF, Gross**
 - High-Image Office Space with Expansive Windowline
 - 3 POs, Conference Room, Kitchenette & Open Area
 - Tenant Improvement Dollars Available
- 2 2,217 SF (Suite 250) | \$14.50/SF, Gross**
 - Ideal for Open Office or Recreational Use
 - 1 PO, Reception & Open Area
 - Tenant Improvement Dollars Available

BUILDING FEATURES:

- Quick Access to SR-522 & I-405
- High Visibility to Woodinville-Snohomish Road & SR-522
- Building Signage Available
- Elevator
- Abundant Parking
- Close to Downtown Woodinville, Costco & Wineries

Rosen~Harbottle Commercial Real Estate | P.O. Box 5003 Bellevue, WA 98009-5003
phone: (425) 454-3030 fax: (425) 454-6705 | www.rosenharbottle.com

The information provided has been obtained from sources believed reliable. While we do not doubt its accuracy, we have not verified and make no guarantee, warranty or representation about it. It is your sole responsibility to independently confirm its accuracy and completeness.

ROSEN | HARBOTTLE
RH

For more information, contact:

**ROSEN~HARBOTTLE
COMMERCIAL REAL ESTATE**

Caleb Farnworth, CCIM

(425) 289-2235

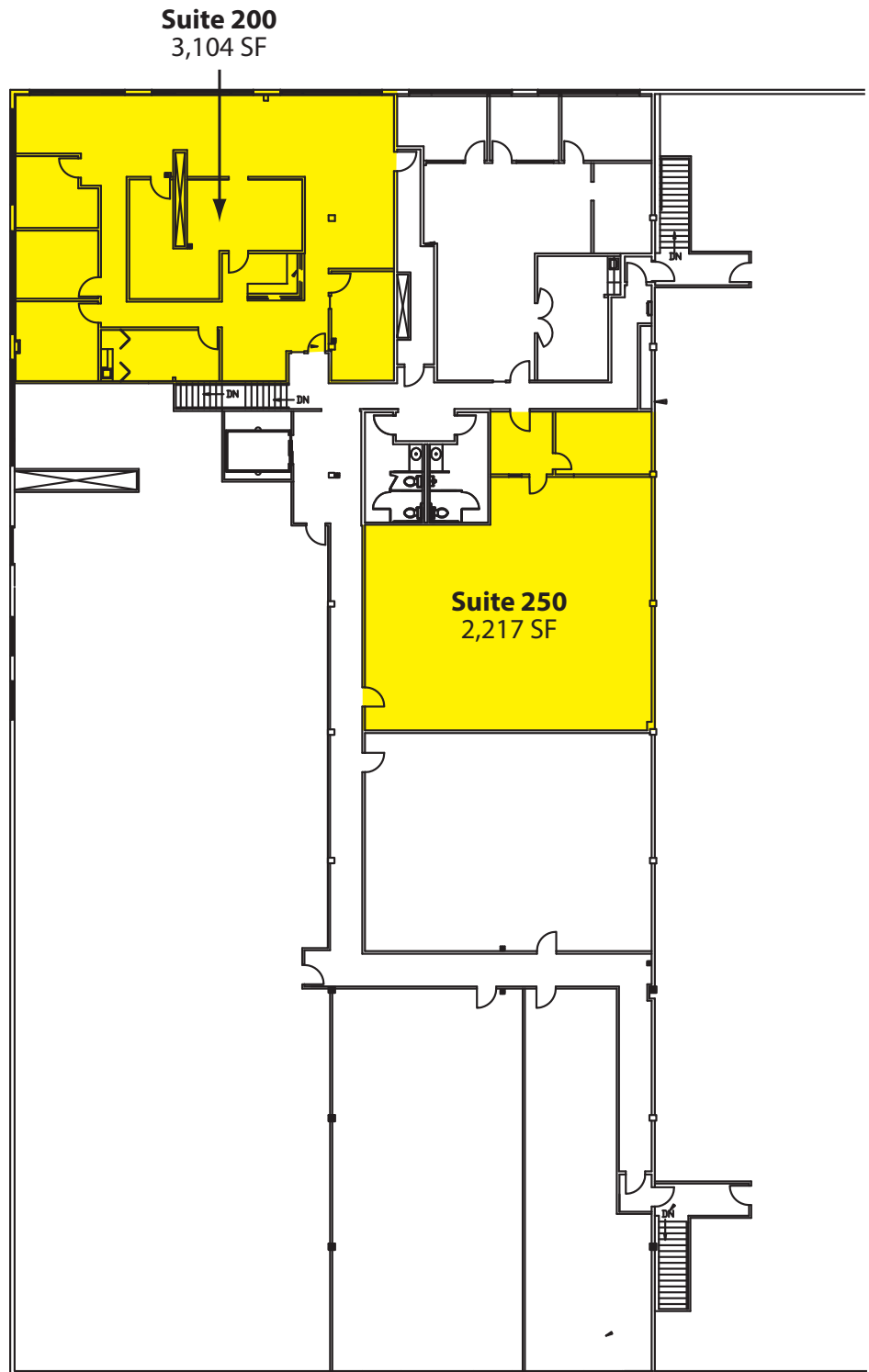
calebf@rosenharbottle.com

www.rosenharbottle.com

BEAR CREEK PLAZA

19011 Woodinville-Snohomish Road NE, Woodinville, WA 98072

SECOND FLOOR



Rosen~Harbottle Commercial Real Estate | P.O. Box 5003 Bellevue, WA 98009-5003
phone: (425) 454-3030 fax: (425) 454-6705 | www.rosenharbottle.com

The information provided has been obtained from sources believed reliable. While we do not doubt its accuracy, we have not verified and make no guarantee, warranty or representation about it. It is your sole responsibility to independently confirm its accuracy and completeness.

BEAR CREEK PLAZA

19011 Woodinville-Snohomish Road NE, Woodinville, WA 98072



For more information, contact:

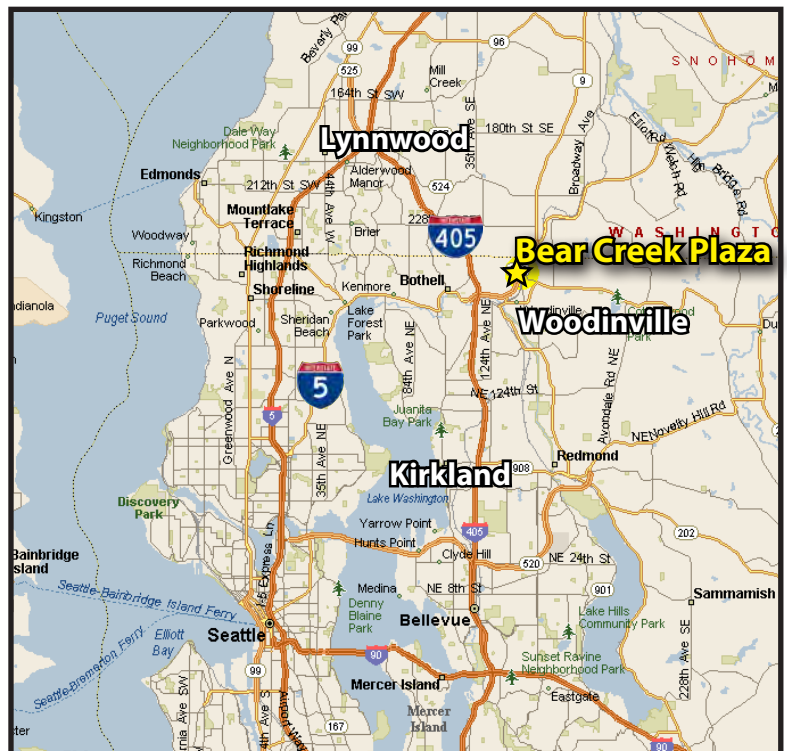
**ROSEN~HARBOTTLE
COMMERCIAL REAL ESTATE**

Caleb Farnworth, CCIM

(425) 289-2235

calebf@rosenharbottle.com

www.rosenharbottle.com



Rosen~Harbottle Commercial Real Estate | P.O. Box 5003 Bellevue, WA 98009-5003
phone: (425) 454-3030 fax: (425) 454-6705 | www.rosenharbottle.com

The information provided has been obtained from sources believed reliable. While we do not doubt its accuracy, we have not verified and make no guarantee, warranty or representation about it. It is your sole responsibility to independently confirm its accuracy and completeness.