

# 612 BUILDING

612 S Lucile Street | Seattle, WA 98108



## CREATIVE OFFICE SPACE

1,440 SF Available

\$3,500/Month + Utilities

### FEATURES:

- 3 Private Offices and Restroom
- Abundant Parking and HVAC
- Located in Seattle Design Center District
- Close Proximity to Georgetown Restaurants, Breweries, and Retail/Art Shops
- Immediate Access to Airport Way, Hwy-99, and I-5



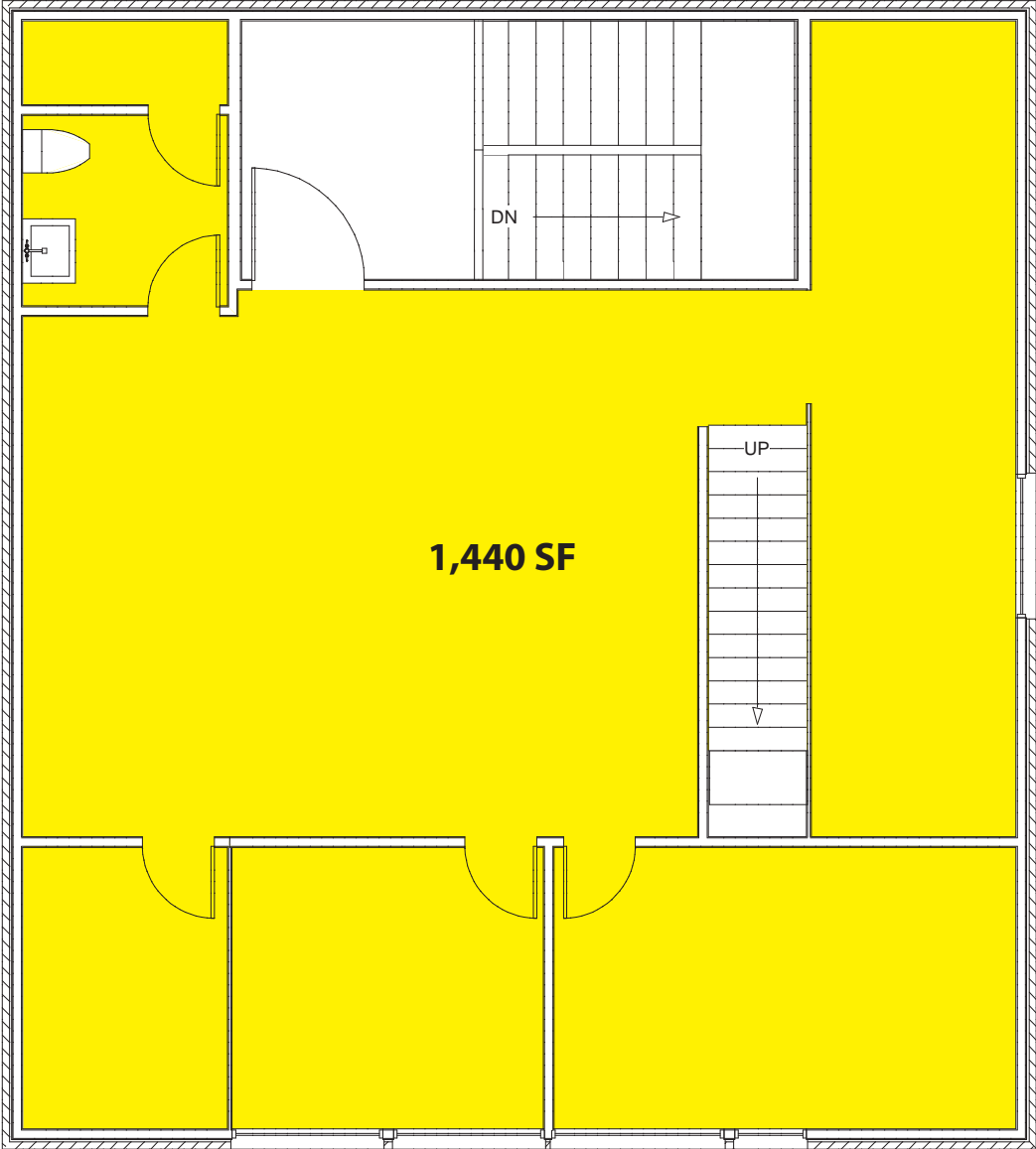
**Caleb Farnworth, CCIM**

(425) 289-2235

calebf@rosenharbottle.com

**RH** ROSEN  
HARBOTTLE  
COMMERCIAL REAL ESTATE

**THIRD LEVEL FLOOR PLAN**



The information provided has been obtained from sources believed reliable. While we do not doubt its accuracy, we have not verified and make no guarantee, warranty or representation about it. It is your sole responsibility to independently confirm its accuracy and completeness.

## LOCATION MAP



### NEARBY AMENITIES

- Fran's Chocolate
- Fonda La Catrina
- Georgetown Ballroom
- Machine House Brewery
- Brass Tracks
- Star Brass Lounge
- Wax Sabbath Spa
- Zippy's Giant Burger
- Blu Grouse
- Elysian Brewery
- Forte Coffee Roaster
- Lect's Soup Stop
- Pho Sriracha
- Maro Polo Bar & Grill
- Sandbox Sports
- Georgetown Brewing
- Krab Jab Studio
- Subway