

# KENT BUSINESS CAMPUS

841 N Central Avenue, Kent, WA 98032

## CLASS A OFFICE

498 SF - 4,610 SF

\$21.00/SF, Full Service

### FEATURES:

- Frontage on N Central Avenue
- New Lobby Renovation & Exterior Paint Complete
- Quick Access to SR 167, SR 516 & Downtown Kent
- Three Blocks from Kent Station & Retail Amenities
- On-Site Amenities: Nail Salon & Teriyaki Restaurant
- Concrete, Steel & Glass Construction

For more information, contact:

**ROSEN~HARBOTTLE COMMERCIAL REAL ESTATE**

**Grant Rubenstein**

(425) 289-2220

grant@rosenharbottle.com



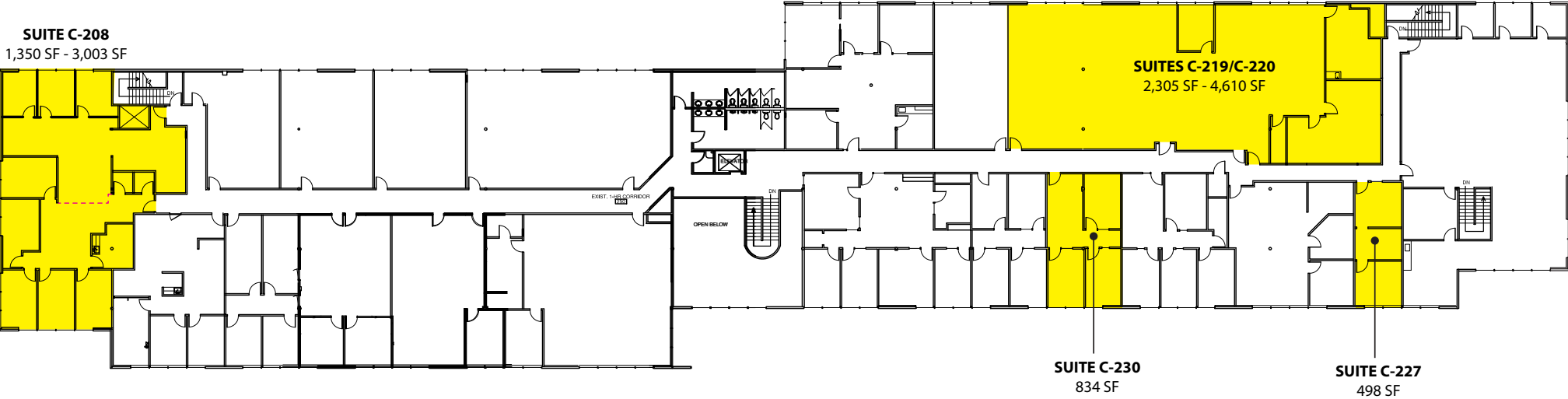
Rosen~Harbottle Commercial Real Estate | P.O. Box 5003 Bellevue, WA 98009-5003  
phone: (425) 454-3030 fax: (425) 454-6705 | [www.rosenharbottle.com](http://www.rosenharbottle.com)

The information provided has been obtained from sources believed reliable. While we do not doubt its accuracy, we have not verified and make no guarantee, warranty or representation about it. It is your sole responsibility to independently confirm its accuracy and completeness.

# KENT BUSINESS CAMPUS

841 N Central Avenue, Kent, WA 98032

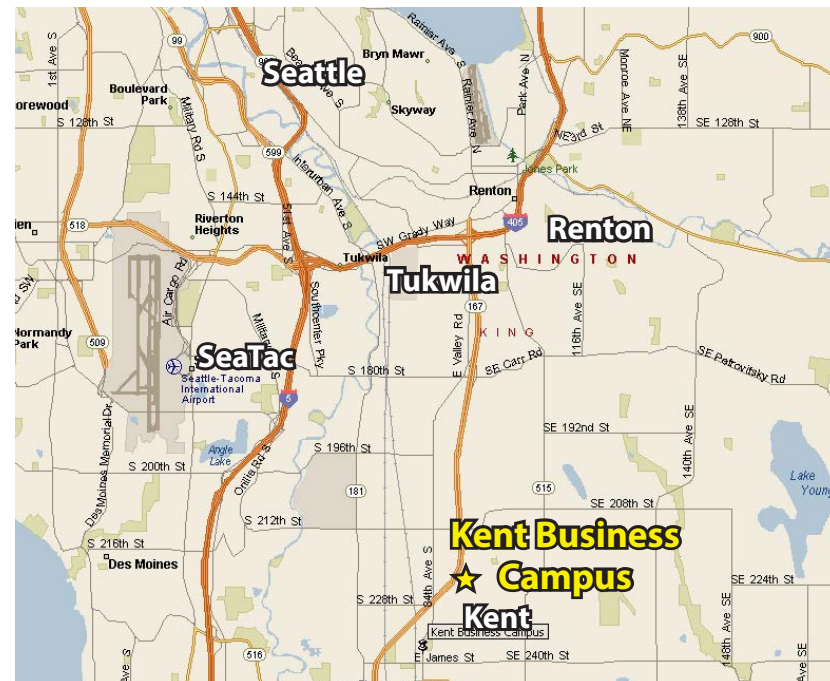
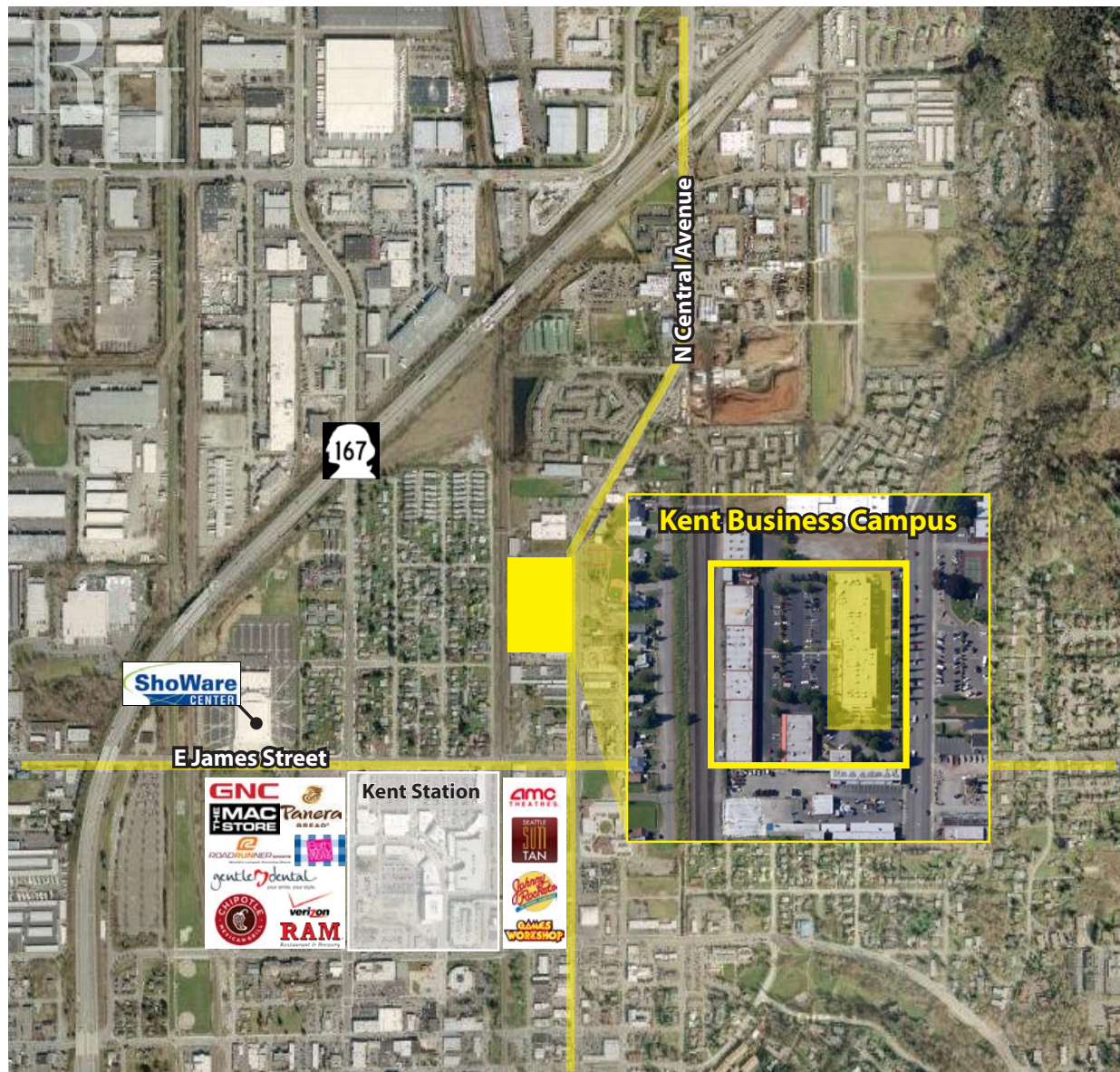
## Building C - Second Floor



The information provided has been obtained from sources believed reliable. While we do not doubt its accuracy, we have not verified and make no guarantee, warranty or representation about it. It is your sole responsibility to independently confirm its accuracy and completeness.

# KENT BUSINESS CAMPUS

841 N Central Avenue, Kent, WA 98032



For more information, contact:

**ROSEN~HARBOTTLE  
COMMERCIAL REAL ESTATE**

**Grant Rubenstein**  
(425) 289-2220  
grant@rosenharbottle.com  
www.rosenharbottle.com