

# EXECUTIVE OFFICE LEASE



## BONNEY LAKE VILLAGE SHOPPING CENTER

21135 - 21137 State Route 410 E | Bonney Lake, WA

**Jack Rosen**

425.289.2221

jack@rosenharbottle.com

**Brian Stewart**

425.289.2222

brians@rosenharbottle.com

**Stossi Tsantilas**

425.279.7943

stossit@rosenharbottle.com

425.454.3030  
rosenharbottle.com

PO Box 5003  
Bellevue, WA 98009 - 5003





# BONNEY LAKE EXECUTIVE SUITES

**191 SF - 251 SF Available**



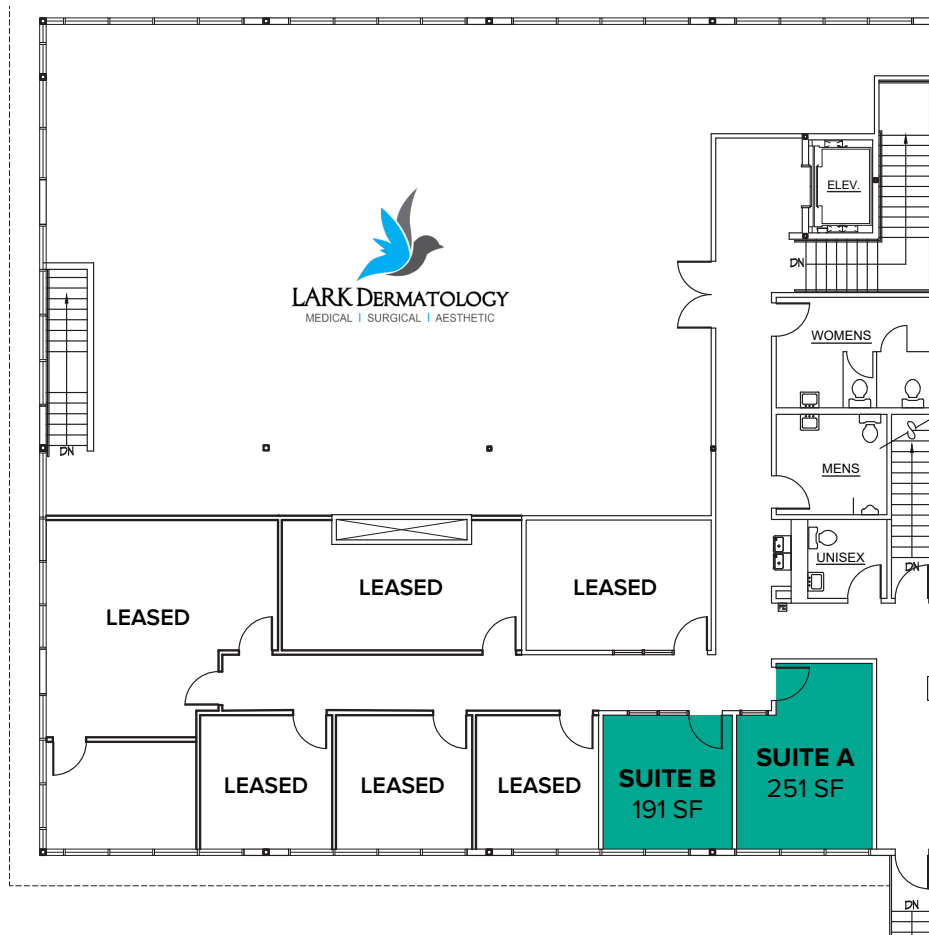
## BUILDING & LOCATION FEATURES:

- Abundant Parking
- Elevator Access
- Natural Lighting
- Upgraded Lobby & Finishes
- Close Proximity to Growing Tehaleh Residential Development

The information provided herein has been obtained from sources believed to be reliable, but no representation or warranty, express or implied, is made with respect to the accuracy or completeness of any such information. Each prospective buyer or tenant should independently investigate, evaluate and verify all information provided herein and any other matters deemed material. Please consult your attorney, tax advisor or other professional advisor. The terms of sale or lease set forth herein are subject to change or withdrawal at any time and without notice.

# SECOND LEVEL FLOOR PLAN

Suite	Square Feet	Rent	Availability
A	251 SF	\$825.00/Month, Gross	4/1/2023
B	191 SF	\$750.00/Month, Gross	Now



The information provided herein has been obtained from sources believed to be reliable, but no representation or warranty, express or implied, is made with respect to the accuracy or completeness of any such information. Each prospective buyer or tenant should independently investigate, evaluate and verify all information provided herein and any other matters deemed material. Please consult your attorney, tax advisor or other professional advisor. The terms of sale or lease set forth herein are subject to change or withdrawal at any time and without notice.

# LOCATION MAP

