

OFFICE  
LEASE



## RH TECH CENTER II

19803 North Creek Parkway N | Bothell, WA

**Brian Stewart**

425.289.2222

[brians@rosenharbottle.com](mailto:brians@rosenharbottle.com)

425.454.3030  
[rosenharbottle.com](http://rosenharbottle.com)

**Caleb Farnworth, CCIM**

425.289.2235

[calebf@rosenharbottle.com](mailto:calebf@rosenharbottle.com)

PO Box 5003  
Bellevue, WA 98009 - 5003





# LARGE CORPORATE-IMAGE, CLASS A OFFICE SPACES

**3,585 SF - 9,964 SF Available**

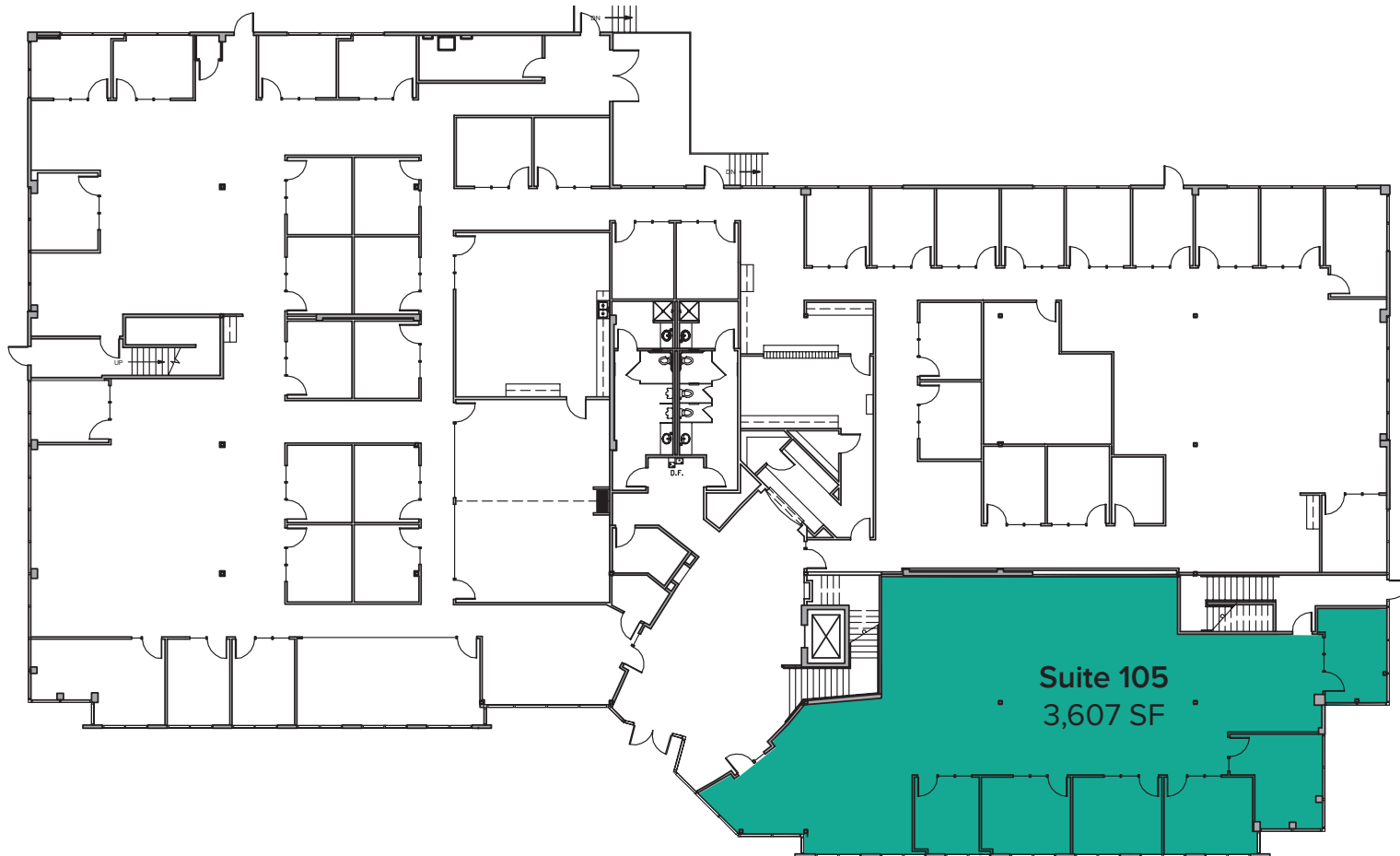
**\$23.00 - \$24.00/SF, NNN**

## FEATURES:

- Quick Access to I-405, SR-522, Downtown Bothell, and Downtown Woodinville
- 1 Block from Restaurants & Retail Shops
- Corporate Neighbors Include Google, AT&T, T-Mobile and Puget Sound Energy
- Directly Adjacent to Bright Horizons Child Care, Sports Fields, and Jogging Trail

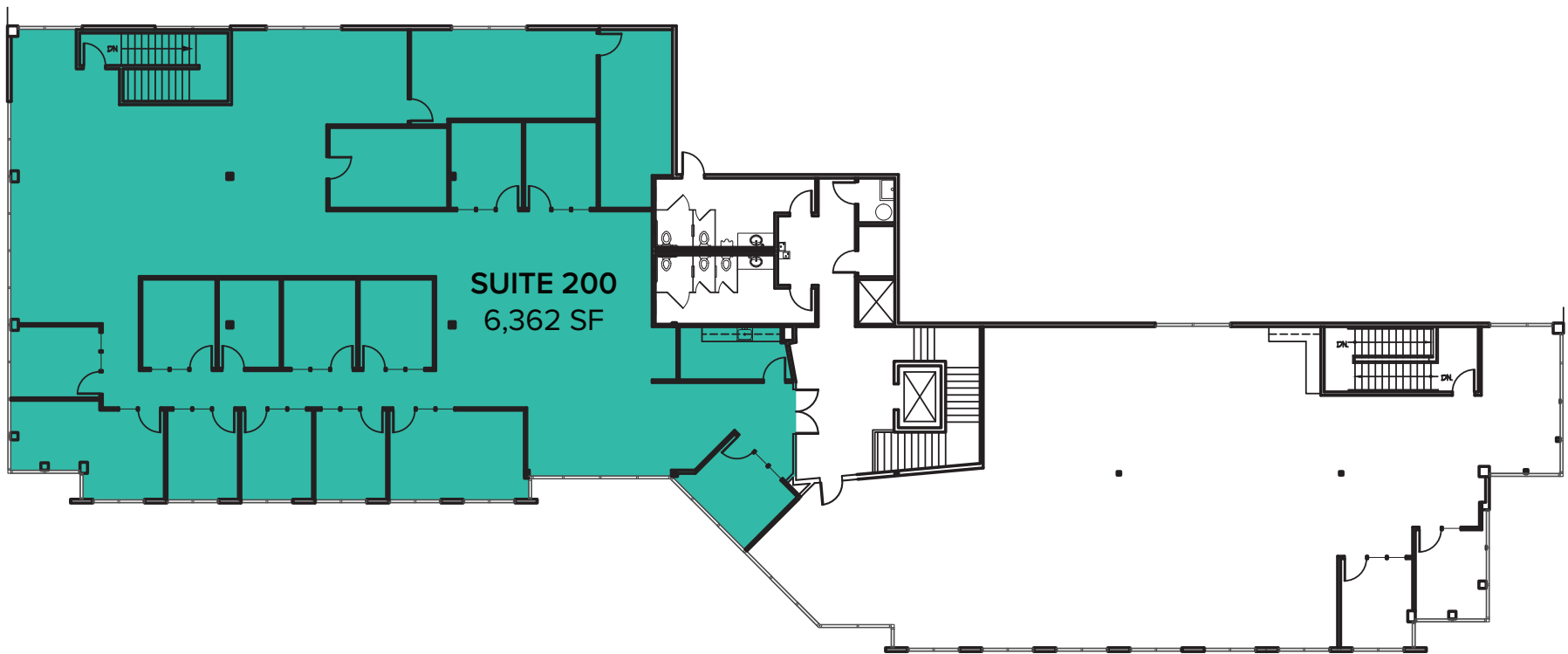
# FLOOR PLAN - 1<sup>st</sup> FLOOR

Suite	SF	Rate	Notes
105	3,607 SF	\$24.00/SF NNN	6 private offices, reception area, and open office space. Can be combined with Suite 200 for a total of 9,964 SF. <b>Available now.</b>



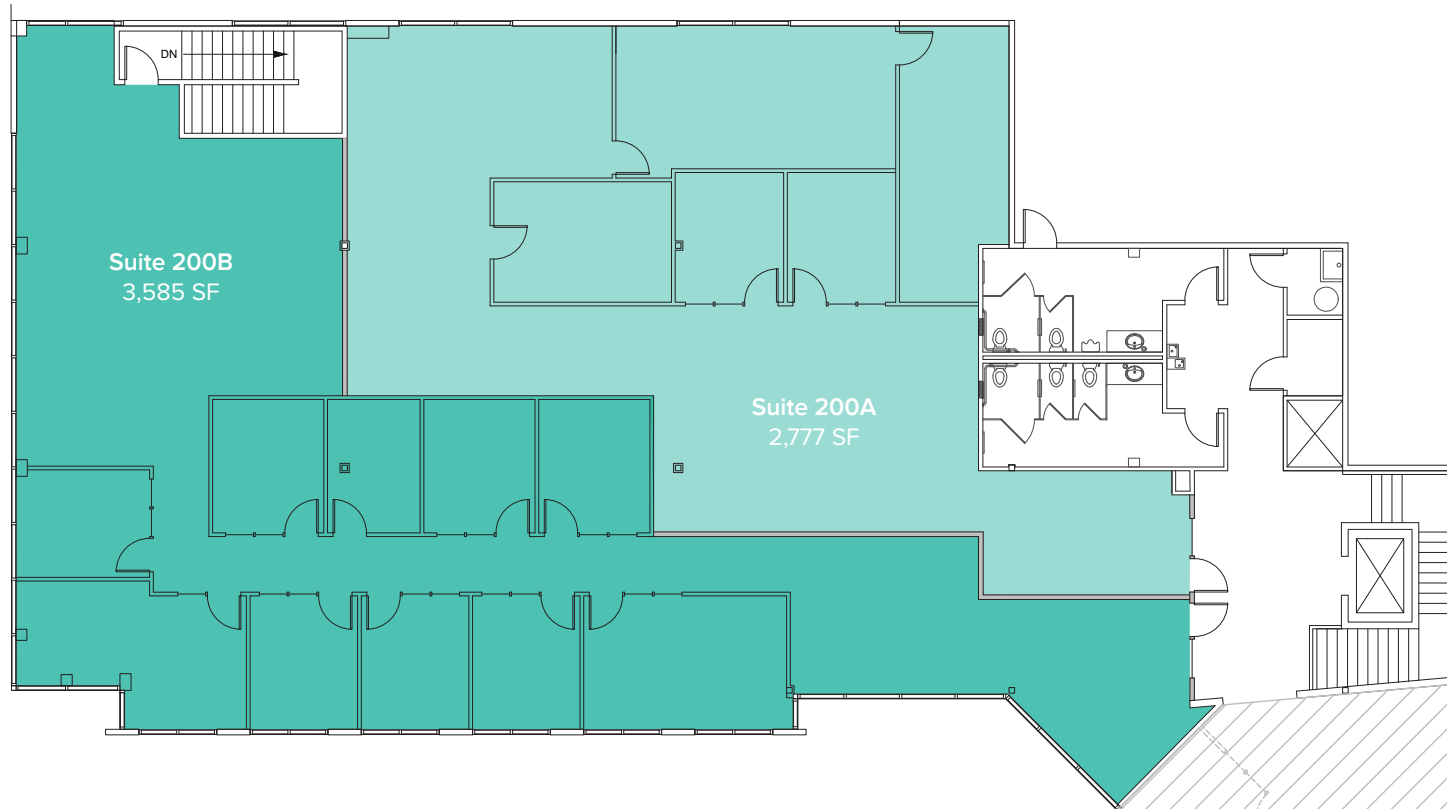
# FLOOR PLAN - 2<sup>nd</sup> FLOOR (AS IS)

Suite	SF	Rate	Notes
200	6,362 SF	\$23.00/SF NNN	13 private offices, 1 conference room, break room, and reception area, and open office space. Can be combined with Suite 105 for a total of 9,964 SF. <b>Available now.</b>



# SUITE 200 SAMPLE FLOOR PLAN

Suite	SF	Rate	Available
200A	2,777 SF	\$24.00/SF NNN	Now
200B	3,585 SF	\$24.00/SF NNN	Now



# CORPORATE NEIGHBORS



## LEGEND:

- 01 AT&T
- 02 Valeant Solta Medical
- 03 General Dynamics
- 04 LuxerCare
- 05 ADT Security
- 06 Google
- 07 AT&T
- 08 United Healthcare Services
- 09 Progressive, Banner Bank
- 10 HUB International
- 11 State Farm
- 12 Talentwise
- 13 Puget Sound Energy
- 14 T-Mobile