

MEADOW CREEK OFFICE PARK

22500-22619 SE 64th Place, Issaquah, WA 98027



CLASS A OFFICE / MEDICAL SPACE

1,386 SF - 2,465 SF Available

\$29.00/SF, NNN - MEDICAL

\$25.00/SF, NNN - OFFICE

FEATURES:

- Minutes from Costco Headquarters
- Class A Finishes
- Amazing Location off I-90 at Front St./E Lake Sammamish Pkwy
- Nearby Amenities Include Retailers, Grocers, Restaurants, Hospital & Parks
- Private Balcony & Free Surface Parking
- Park-Like, Campus Setting

For more information, contact:

**ROSEN~HARBOTTLE
COMMERCIAL REAL ESTATE**

Brian Stewart

(425) 289-2222

brians@rosenharbottle.com

www.rosenharbottle.com

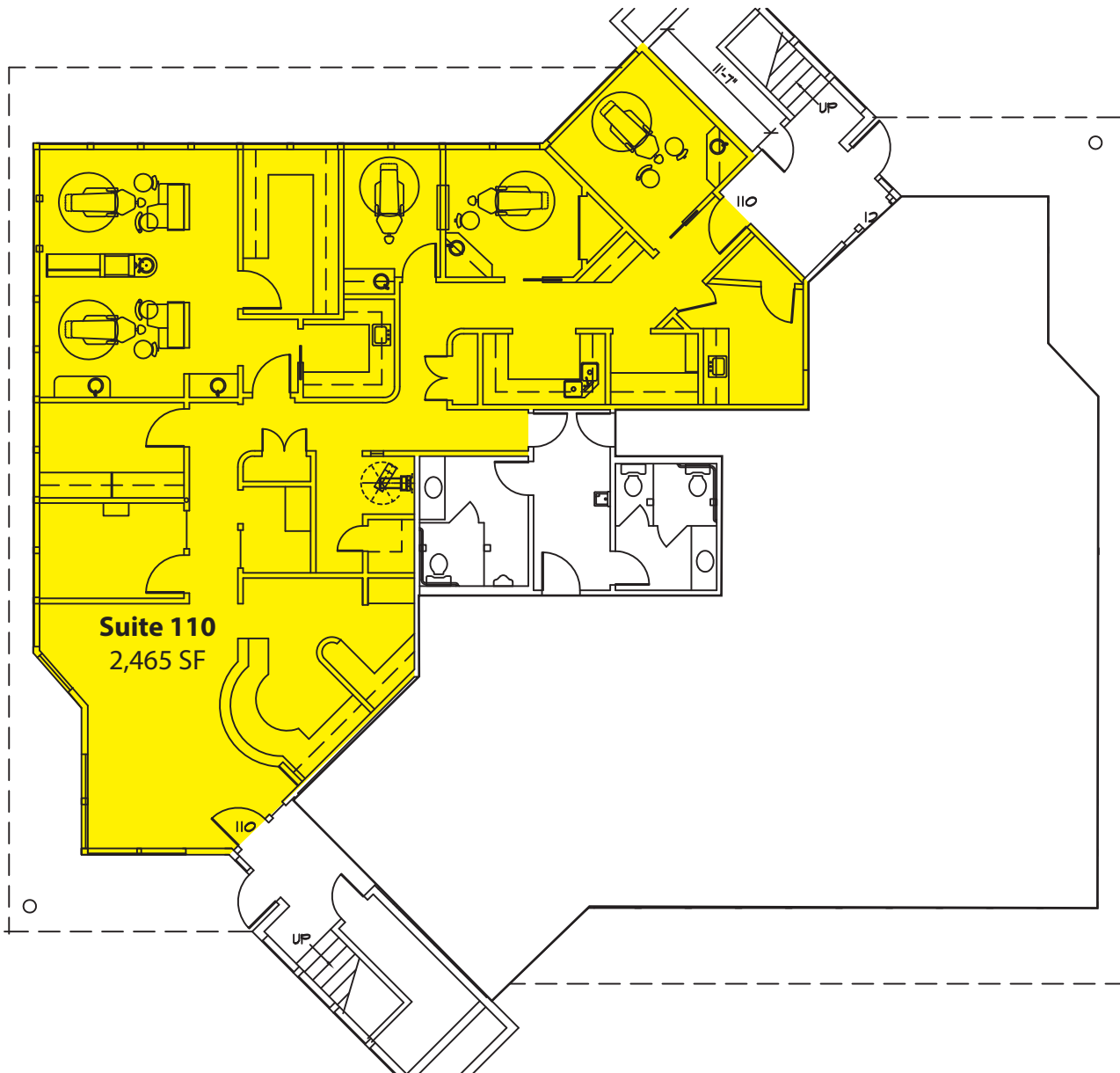
Rosen~Harbottle Commercial Real Estate | P.O. Box 5003 Bellevue, WA 98009-5003
phone: (425) 454-3030 fax: (425) 454-6705 | www.rosenharbottle.com

The information provided has been obtained from sources believed reliable. While we do not doubt its accuracy, we have not verified and make no guarantee, warranty or representation about it. It is your sole responsibility to independently confirm its accuracy and completeness.

Building B - First Floor

SUITE	SF
Suite 110	2,465 SF

Notes: Former oral surgeon space with full build out throughout.



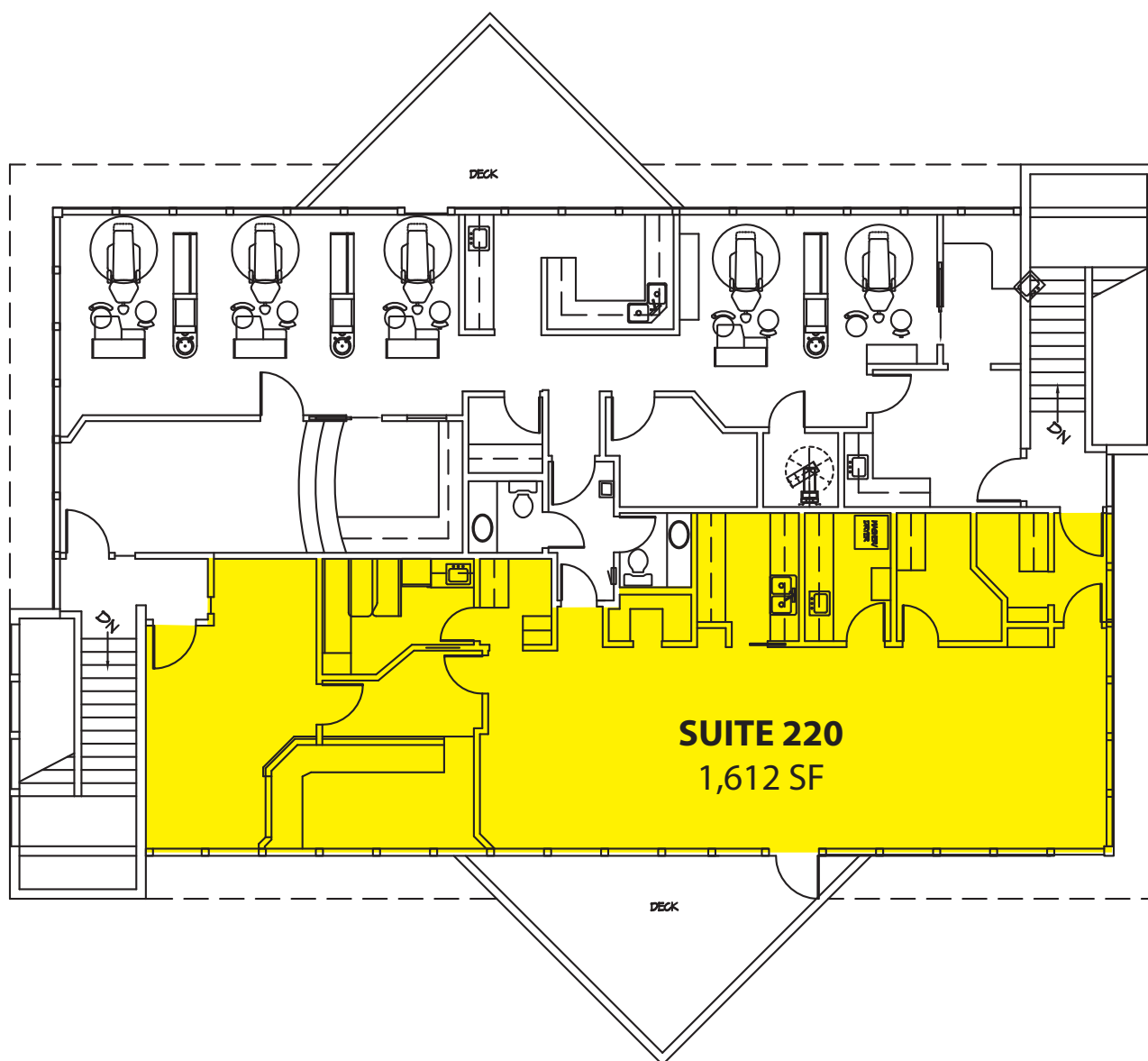
MEADOW CREEK OFFICE PARK

22500-22619 SE 64th Place, Issaquah, WA 98027

Building B - Second Floor

SUITE	SF
Suite 220	1,612 SF

Notes: Full dental build out. Air compressors also available. Previous tenant had 5 chairs in place.



Rosen~Harbottle Commercial Real Estate | P.O. Box 5003 Bellevue, WA 98009-5003
phone: (425) 454-3030 fax: (425) 454-6705 | www.rosenharbottle.com

The information provided has been obtained from sources believed reliable. While we do not doubt its accuracy, we have not verified and make no guarantee, warranty or representation about it. It is your sole responsibility to independently confirm its accuracy and completeness.



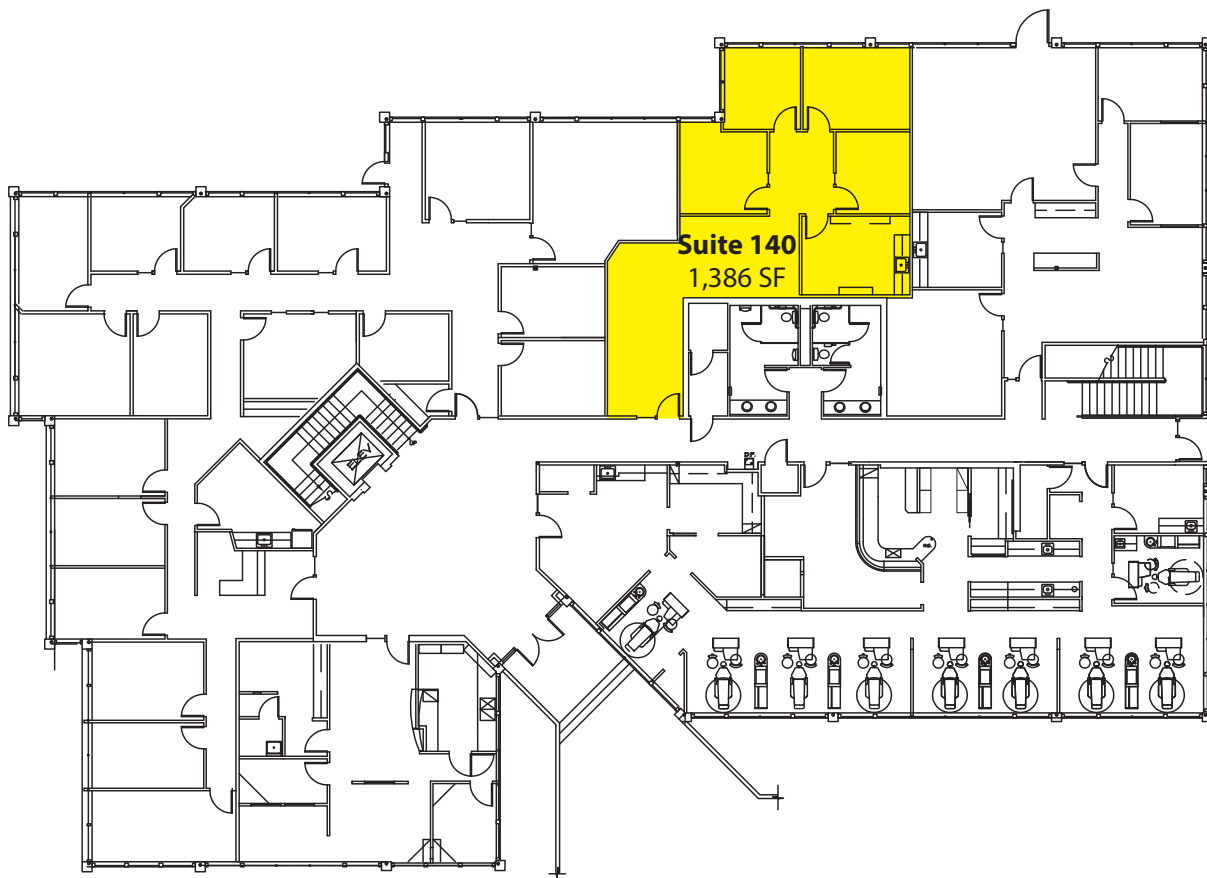
MEADOW CREEK OFFICE PARK

22500-22619 SE 64th Place, Issaquah, WA 98027

Building H - First Floor

SUITE	SF
Suite 140	1,386 SF

Notes: 3 POs, kitchenette/breakroom, reception and open area.

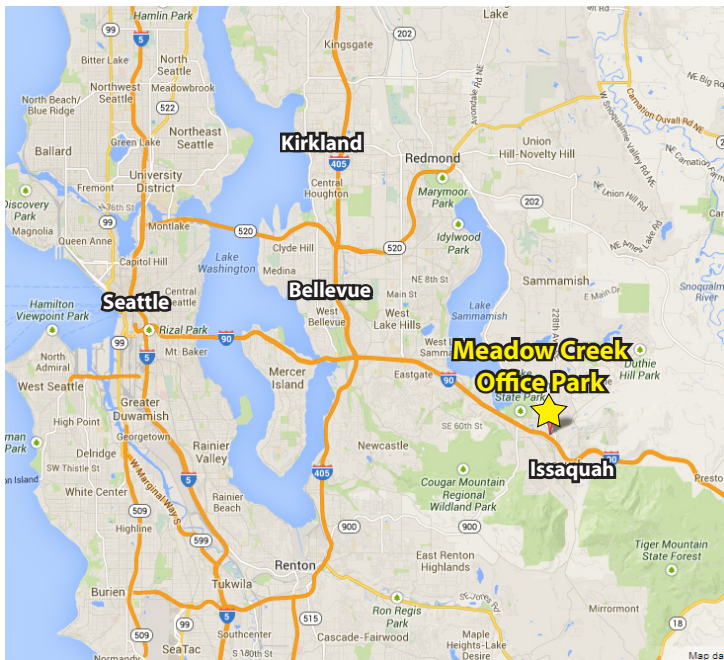


Rosen~Harbottle Commercial Real Estate | P.O. Box 5003 Bellevue, WA 98009-5003
phone: (425) 454-3030 fax: (425) 454-6705 | www.rosenharbottle.com

The information provided has been obtained from sources believed reliable. While we do not doubt its accuracy, we have not verified and make no guarantee, warranty or representation about it. It is your sole responsibility to independently confirm its accuracy and completeness.

MEADOW CREEK OFFICE PARK

22500-22619 SE 64th Place, Issaquah, WA 98027



For more information, contact:

**ROSEN~HARBOTTLE
COMMERCIAL REAL ESTATE**

Brian Stewart
(425) 289-2222
brians@rosenharbottle.com
www.rosenharbottle.com

Rosen~Harbottle Commercial Real Estate | P.O. Box 5003 Bellevue, WA 98009-5003
phone: (425) 454-3030 fax: (425) 454-6705 | www.rosenharbottle.com

The information provided has been obtained from sources believed reliable. While we do not doubt its accuracy, we have not verified and make no guarantee, warranty or representation about it. It is your sole responsibility to independently confirm its accuracy and completeness.