

OFFICE
LEASE



Lake Tye Building

14090 Fryelands Boulevard | Monroe, WA

Caleb Farnworth, CCIM

425.289.2235

calebf@rosenharbottle.com

Stossi Tsantilas

425.279.7943

stossit@rosenharbottle.com

425.454.3030
rosenharbottle.com

PO Box 5003
Bellevue, WA 98009 - 5003





PREMIERE CLASS A OFFICE BUILDING IN MONROE, WOODINVILLE, & SNOHOMISH

NEWLY RENOVATED LOBBY & COMMON AREAS

FEATURES:

- **1,000 SF - 3,116 SF Office Space Available**
- Two Floors of Office over Ground Floor Retail
- Lakefront Building with Views and Natural Light
- Class A, High-end Finishes
- 1 Mile from EvergreenHealth Monroe Medical Center
- Abundant Parking

The information provided herein has been obtained from sources believed to be reliable, but no representation or warranty, express or implied, is made with respect to the accuracy or completeness of any such information. Each prospective buyer or tenant should independently investigate, evaluate and verify all information provided herein and any other matters deemed material. Please consult your attorney, tax advisor or other professional advisor. The terms of sale or lease set forth herein are subject to change or withdrawal at any time and without notice.



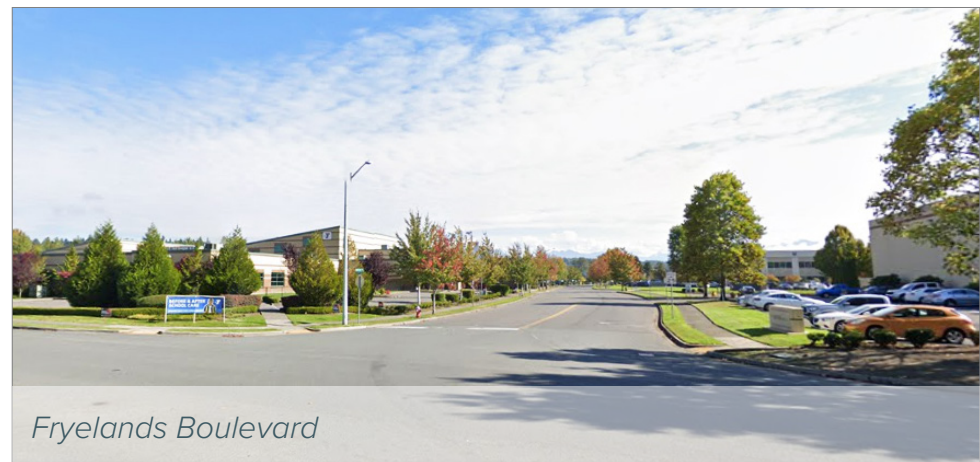
Lakefront building with views and natural light



Lake Tye & Lake Tye Trail



Private balconies views

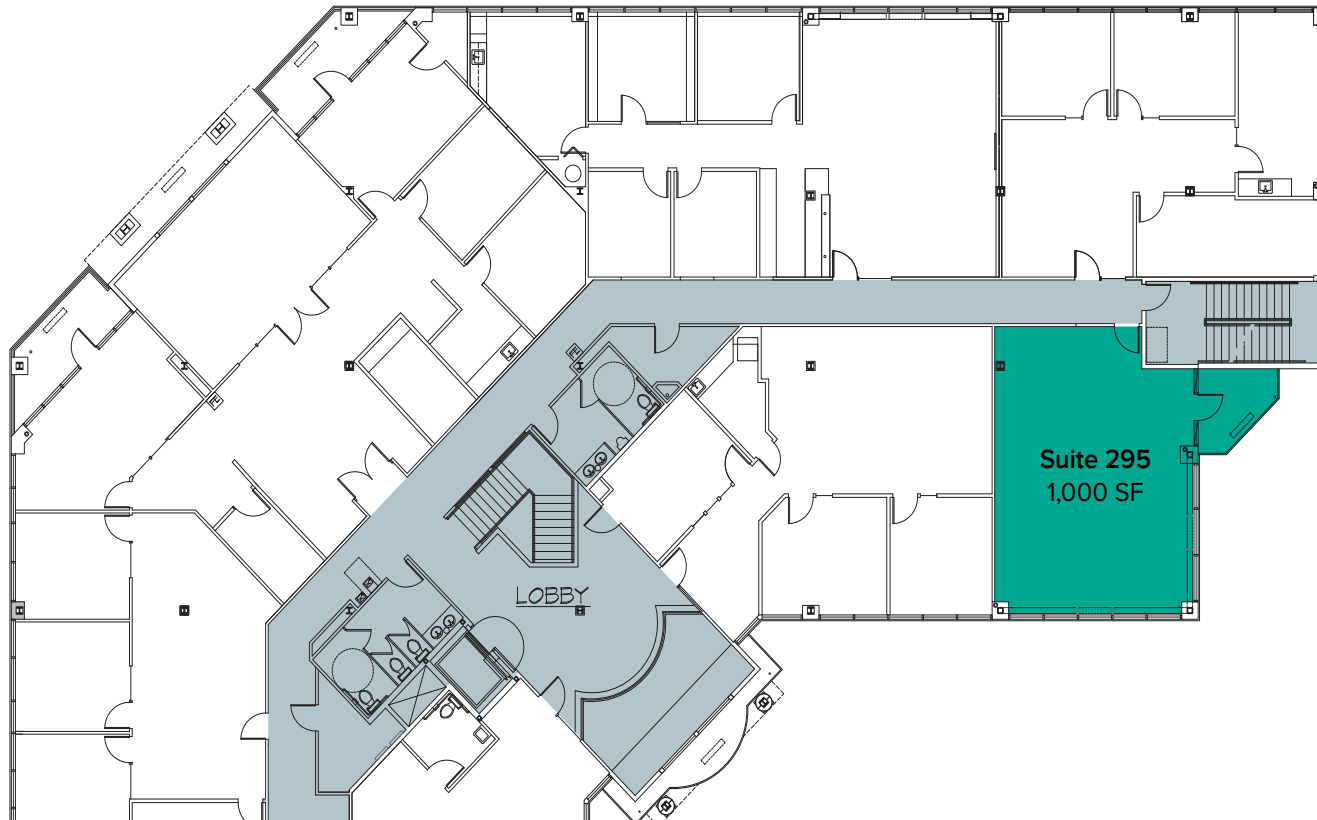


Fryelands Boulevard

The information provided herein has been obtained from sources believed to be reliable, but no representation or warranty, express or implied, is made with respect to the accuracy or completeness of any such information. Each prospective buyer or tenant should independently investigate, evaluate and verify all information provided herein and any other matters deemed material. Please consult your attorney, tax advisor or other professional advisor. The terms of sale or lease set forth herein are subject to change or withdrawal at any time and without notice.

SECOND LEVEL FLOOR PLAN

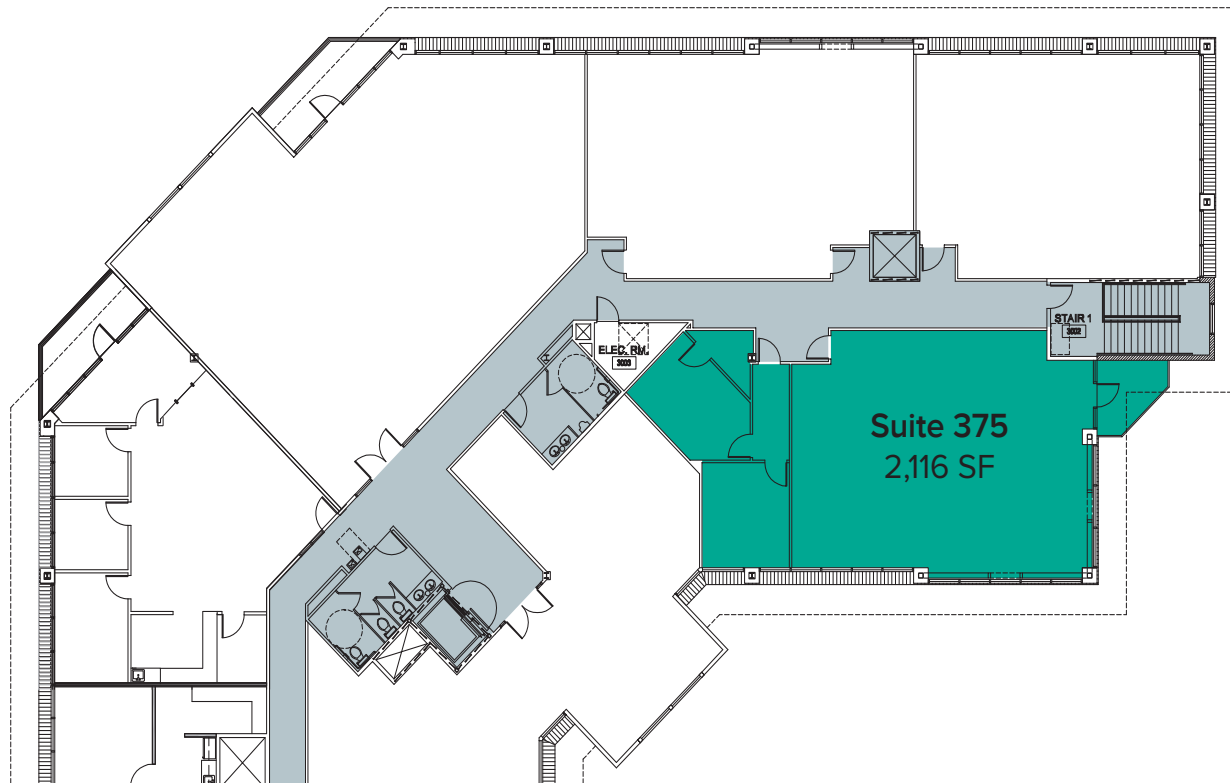
Suite	Square Feet	Rate	Notes
295	1,000 SF	\$22.50/SF, NNN	Endcap office space with open work area and private balcony. Contiguous with Suites 375 for a total of 3,116 SF. Available with 90 days' notice.



The information provided herein has been obtained from sources believed to be reliable, but no representation or warranty, express or implied, is made with respect to the accuracy or completeness of any such information. Each prospective buyer or tenant should independently investigate, evaluate and verify all information provided herein and any other matters deemed material. Please consult your attorney, tax advisor or other professional advisor. The terms of sale or lease set forth herein are subject to change or withdrawal at any time and without notice.

THIRD LEVEL FLOOR PLAN

Suite	Square Feet	Rate	Notes
375	2,116 SF	\$22.50/SF, NNN	Endcap office space with 2 private offices and private balcony. Contiguous with Suites 295 for a total of 3,116 SF. Available with 90 days' notice.



The information provided herein has been obtained from sources believed to be reliable, but no representation or warranty, express or implied, is made with respect to the accuracy or completeness of any such information. Each prospective buyer or tenant should independently investigate, evaluate and verify all information provided herein and any other matters deemed material. Please consult your attorney, tax advisor or other professional advisor. The terms of sale or lease set forth herein are subject to change or withdrawal at any time and without notice.

LOCATION MAP

DRIVE TIMES

(14090 FRYELANDS BLVD):

To SR-522 West Entrance: **8 Minutes**

To Shopping Centers on US-2: **6 Minutes**

To Evergreen Health Center: **4 Minutes**

LAKE TYE BUILDING

Evergreen State Fairgrounds

Evergreen Health Monroe Medical Center

SR-522 West Entrance

 **Therapeutic Associates**
PHYSICAL THERAPY

 **Burger Madness**
Monroe

 **VENUS**
salon chair

 **Paesano's**
COFFEE & CAFE

 **Kami Teriyaki**

 **Asian Spice Restaurant**

 **Walmart**

 **Lowe's**

 **goodwill**

 **Sonic Drive-Ins**

 **McDonald's**

 **Fred Meyer**

 **RED ROBIN**

 **HARBOR FREIGHT TOOLS**

 **Denny's**

 **RITE AID**