

FOR  
LEASE



# LYNNWOOD BUSINESS CENTER

19231 36th Avenue W | Lynnwood, WA

Caleb Farnworth, CCIM

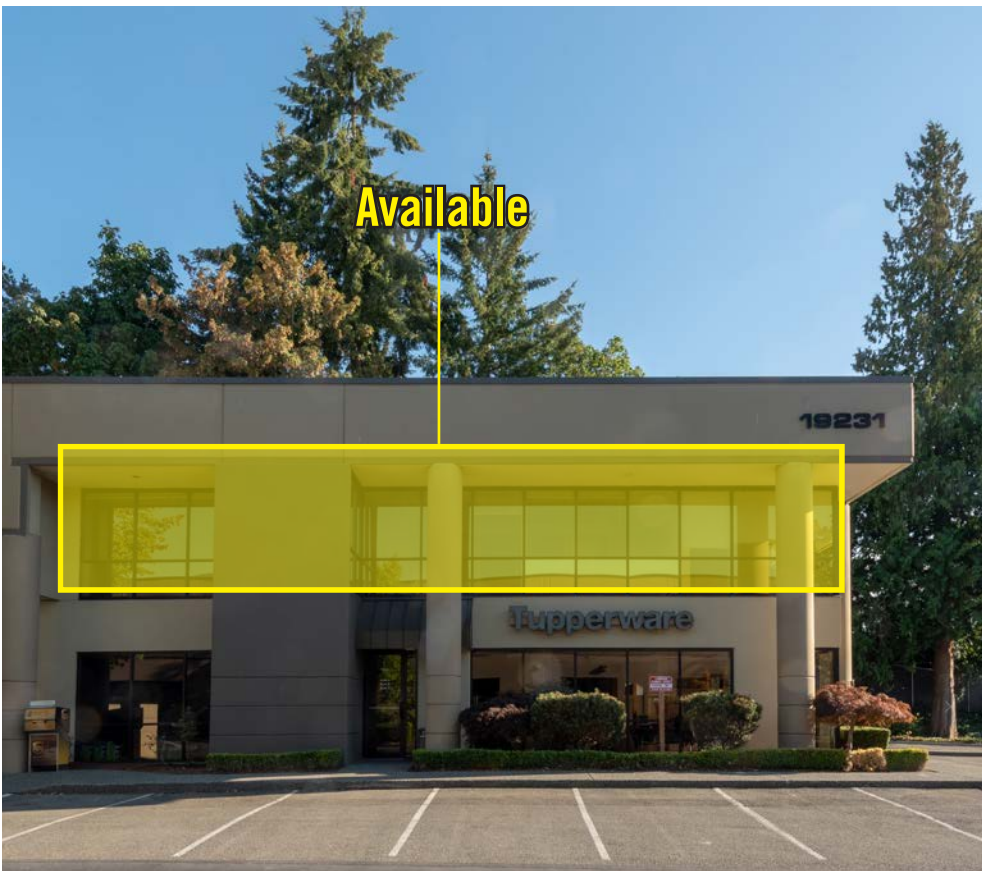
425.289.2235

calebf@rosenharbottle.com

425.454.3030  
rosenharbottle.com

PO Box 5003  
Bellevue, WA 98009 - 5003





**CAN'T BEAT LOCATION!**

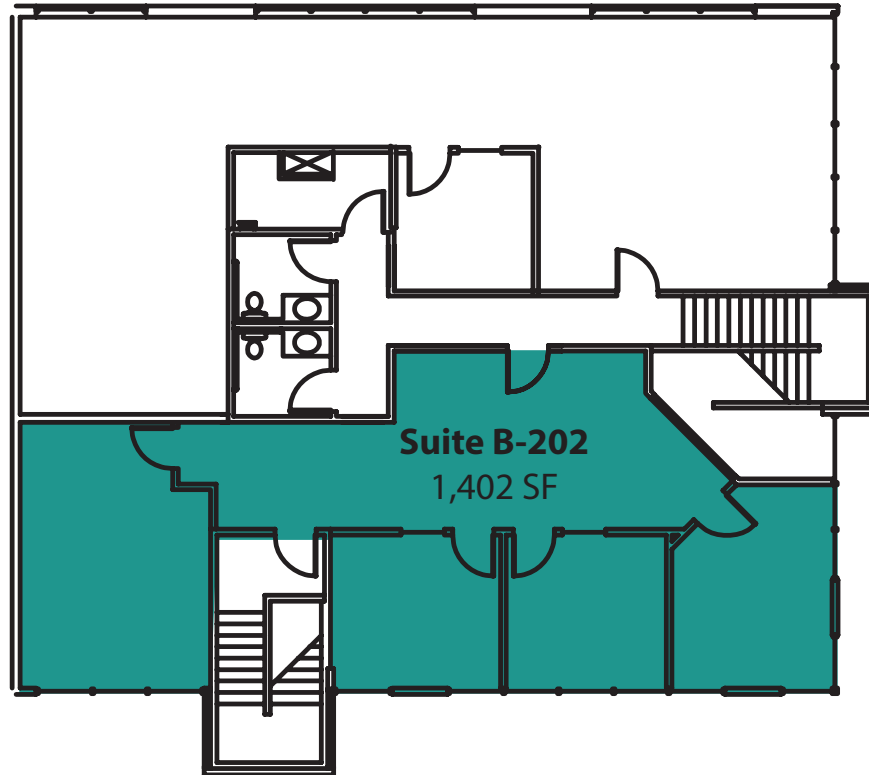
**\$2,921/Month**

**1,402 SF Available**

**BUILDING DETAILS:**

- Second Floor with Two Glass Entrances
- Building Signage
- Efficient Floor Plan
- Floor to Ceiling Windows - Great Natural Light
- Quick Access to I-5, I-405 & Hwy 99
- Near Convention Center & Alderwood Mall Amenities
- Comcast & Frontier High-Speed Internet Available

# FLOOR PLAN



# LOCATION MAP

