

# OFFICE/MEDICAL SPACE

21135-21137 State Route 410 E, Bonney Lake, WA 98391

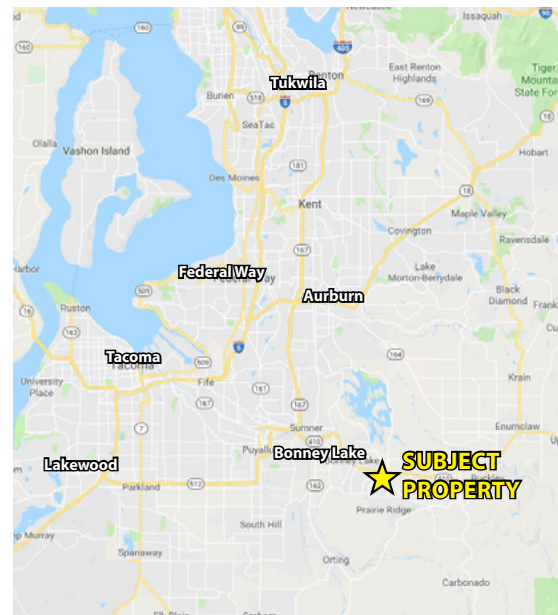


**139 SF - 10,291 SF Available**

**\$16.00/SF, NNN**

## FEATURES:

- Recently Upgraded Lobby & Finishes
- Elevator Access
- Abundant Parking
- Building Signage
- Less than 5 Miles from Tehaleh Community
  - Washington's Largest Mixed Use Residential Development
- Executive Suites Available: 139 SF - 513 SF
- [Retail Also Available](#) (click for flyer)



For more information, contact:

**Jack Rosen**

(425) 289-2221

jack@rosenharbottle.com

**Brian Stewart**

(425) 289-2222

brians@rosenharbottle.com

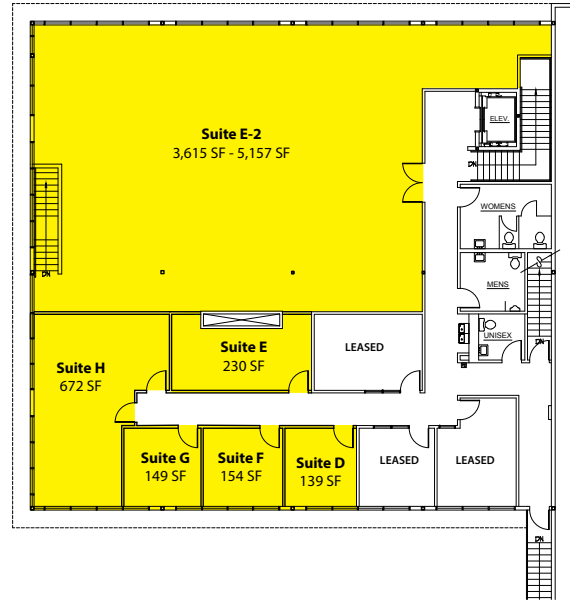
# AVAILABLE SPACE

## SECOND FLOOR

### Executive Suites

Suite	SF	Rent/Month
D	139 SF	\$550
E	230 SF	\$700
F	154 SF	\$575
G	149 SF	\$550
H	513 SF	\$1,550

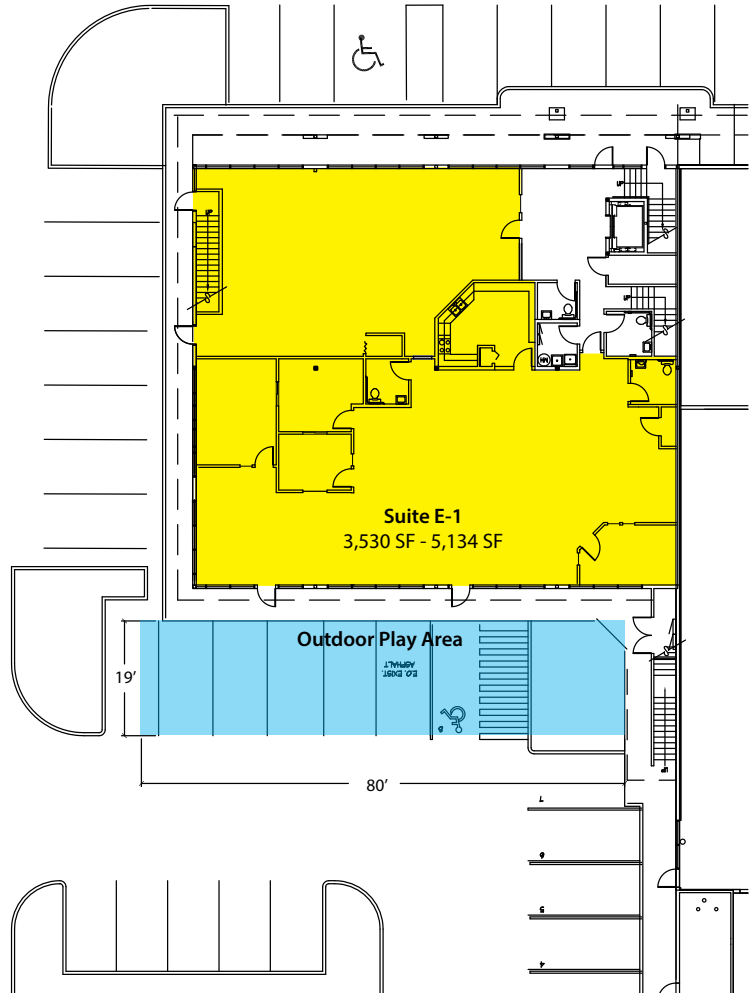
[[Rent/Month above includes utilites.]]



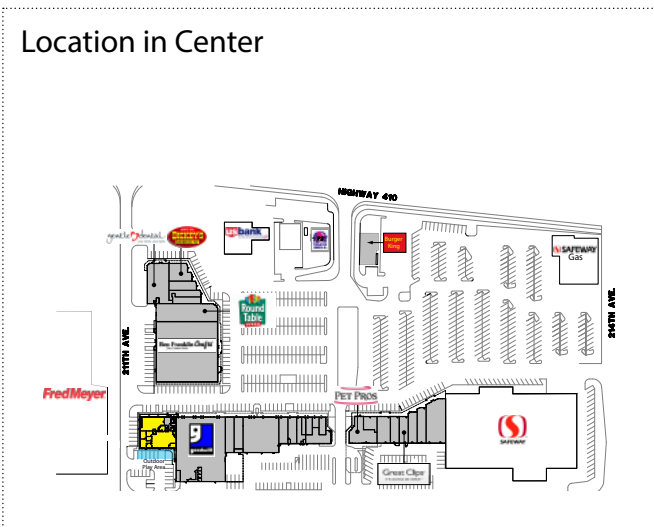
## FIRST FLOOR

### Office / Medical Suites

Suite	SF	Rent/SF
E1	3,530-5,134 SF	\$16.00/SF
E2	3,615-5,157 SF	\$16.00/SF
Contiguous	10,291 SF	\$16.00/SF



### Location in Center



The information provided has been obtained from sources believed reliable. While we do not doubt its accuracy, we have not verified and make no guarantee, warranty or representation about it. It is your sole responsibility to independently confirm its accuracy and completeness.