

# MILITARY ROAD S BUILDING

8300 MILITARY ROAD S, SEATTLE, WA 98108



For more information, contact:

**ROSEN~HARBOTTLE  
COMMERCIAL REAL ESTATE**

**Jack Rosen**

(425) 289-2221

jack@rosenharbottle.com

www.rosenharbottle.com

## OFFICE/TECH SPACE

8,778 SF Available

\$0.85 / SF, NNN

### FEATURES:

- Endcap Space
- Visibility to I-5
- 4,708 SF Can Be Converted to Warehouse
- Double-Man Door Loading
- 3-Phase Power
- Concrete Tilt-Up Construction

Rosen~Harbottle Commercial Real Estate | P.O. Box 5003 Bellevue, WA 98009-5003  
phone: (425) 454-3030 fax: (425) 454-6705 | www.rosenharbottle.com

The information provided has been obtained from sources believed reliable. While we do not doubt its accuracy, we have not verified and make no guarantee, warranty or representation about it. It is your sole responsibility to independently confirm its accuracy and completeness.

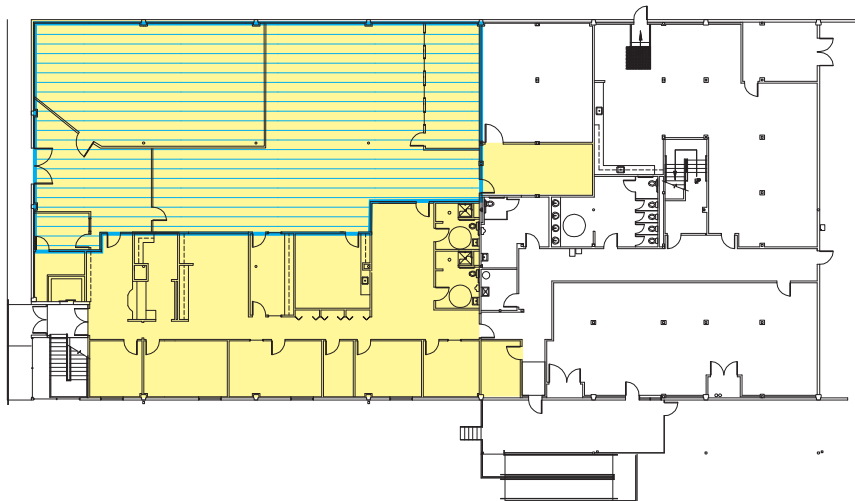
# MILITARY ROAD S BUILDING

8300 MILITARY ROAD S, SEATTLE, WA 98108

## FLOOR PLAN

**SUITE 150** - 8,778 SF Office Available

 4,708 SF can be converted to warehouse

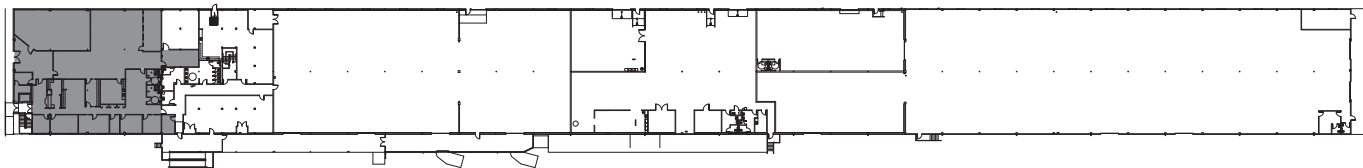


## FLOOR PLAN

NOT TO SCALE



## SITE PLAN



Rosen~Harbottle Commercial Real Estate | P.O. Box 5003 Bellevue, WA 98009-5003  
phone: (425) 454-3030 fax: (425) 454-6705 | [www.rosenharbottle.com](http://www.rosenharbottle.com)

The information provided has been obtained from sources believed reliable. While we do not doubt its accuracy, we have not verified and make no guarantee, warranty or representation about it. It is your sole responsibility to independently confirm its accuracy and completeness.



# MILITARY ROAD S BUILDING

8300 MILITARY ROAD S, SEATTLE, WA 98108



Rosen~Harbottle Commercial Real Estate | P.O. Box 5003 Bellevue, WA 98009-5003  
phone: (425) 454-3030 fax: (425) 454-6705 | [www.rosenharbottle.com](http://www.rosenharbottle.com)

The information provided has been obtained from sources believed reliable. While we do not doubt its accuracy, we have not verified and make no guarantee, warranty or representation about it. It is your sole responsibility to independently confirm its accuracy and completeness.