

WAREHOUSE
LEASE



LYNNWOOD EAST BUSINESS PARK, Building B

2031 196th Street SW | Lynnwood, WA

Caleb Farnworth, CCIM

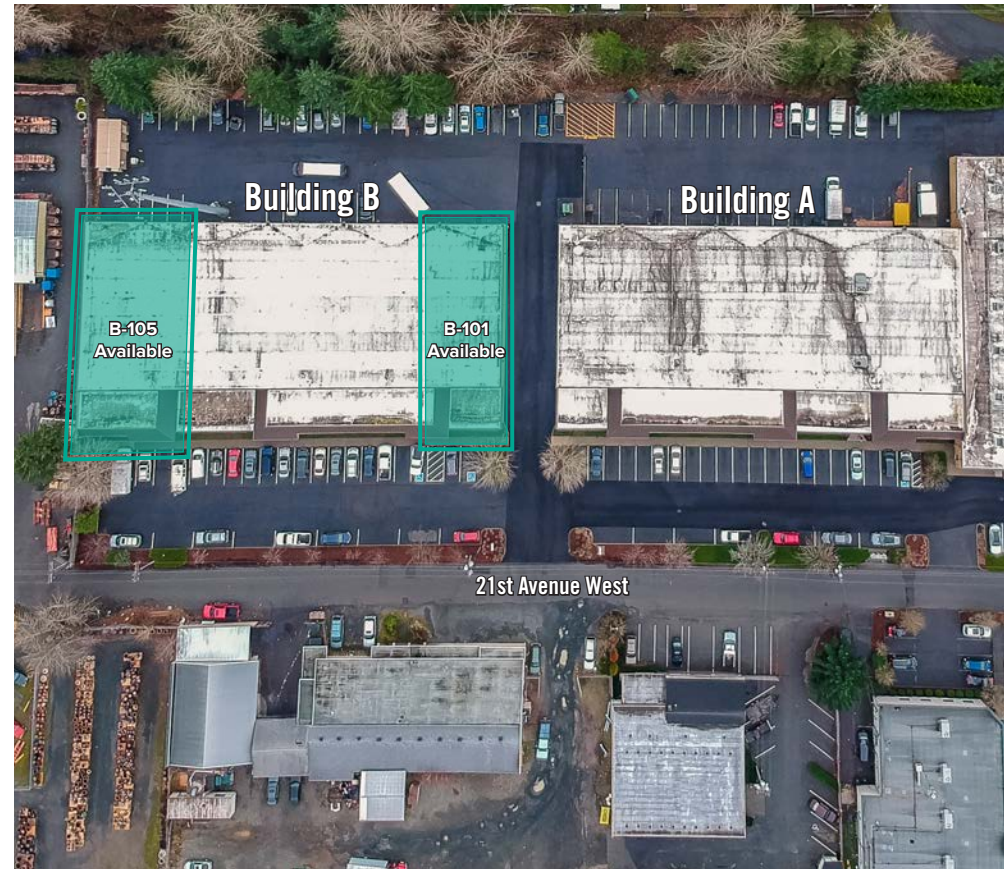
425.289.2235

calebf@rosenharbottle.com

425.454.3030
rosenharbottle.com

PO Box 5003
Bellevue, WA 98009 - 5003





WAREHOUSE/OFFICE NEAR I-5 & I-405 INTERSECTION

4,300 SF - 6,495 SF Available

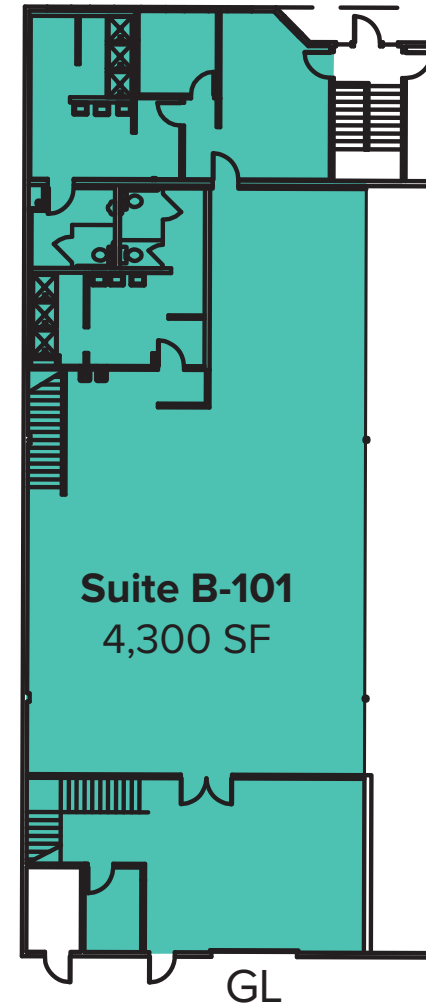
FEATURES:

- Professional Image
- Easy Ingress/Egress
- Abundant Parking
- Monument Signage and Building Signage Available
- Immediate Access to I-5, I-405, and SR-525

B-101 FLOOR PLAN

FEATURES

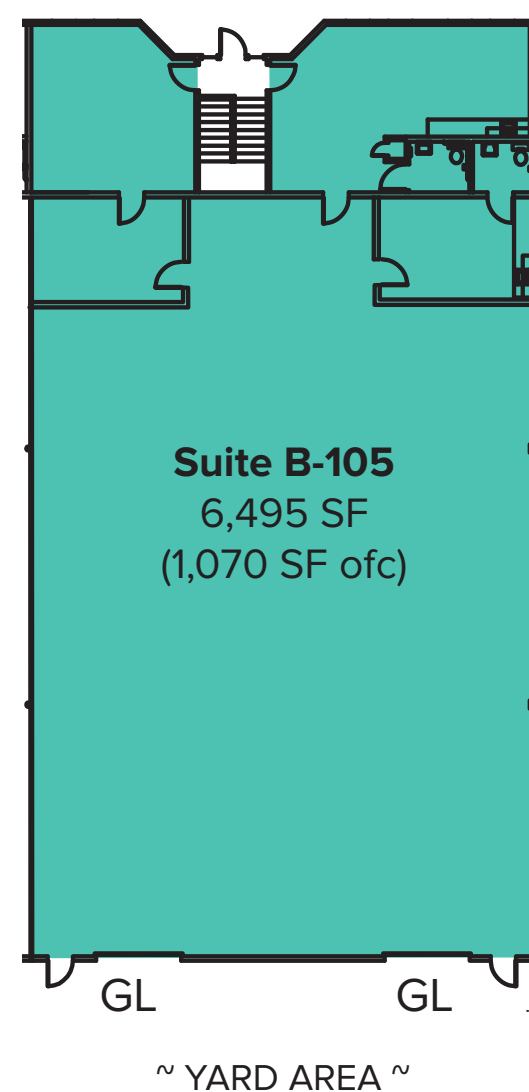
- **Available 7/1/2021**
- **4,300 SF**
- **\$4,300/Month, NNN**
- Former Gym Use
- 2 Locker Rooms with Restrooms
- 1 Private Room
- Reception Area
- Clear Span Warehouse
- 1 Grade-Level Door



B-105 FLOOR PLAN

FEATURES

- **Available Now**
- **6,495 SF (1,070 SF ofc)**
- **\$6,495/Month, NNN**
- 2 Private Offices
- Break Room with Kitchenette
- 2 Restrooms
- Clear Span Warehouse
- 2 Grade-Level Doors
- Potential for Fenced Yard Area



LOCATION MAP



DRIVE TIMES:

I-5: 2 Min.

I-405: 3 Min.

Alderwood Mall: 4 Min.

Seattle: 21 Min.

Bellevue: 20 Min.