

# New Ownership Presents: GATEWAY POINTE BUSINESS PARK

2601-2715 Jahn Avenue NW, Gig Harbor, WA 98335

**BEST PRICES IN GIG HARBOR**



**IDEAL USES: Professional Office/Medical, Showroom,  
Wholesale Retail, Recreational, Winery/Brewery,  
Educational, Salon, Boutique**

**729 SF - 10,380 SF Available**  
**\$12.50 - \$13.50/SF, MODIFIED GROSS**

#### **FEATURES:**

- Attractive Architectural Design & Business Park Atmosphere
- Great Visibility to 70,000+ Cars/Day on Hwy 16
- Quick Access to Tacoma - Half Mile from Off-Ramp
- Buildings Include Heating & Air Conditioning
- Tall Ceilings with Sky Lights & Balconies
- Extensive Window Line Provides Abundant Natural Light
- Buildings Available for Purchase:
  - Building C: \$1,771,000 (\$171/SF)
  - Building D: \$1,771,000 (\$171/SF)
  - Building E: \$1,879,000 (\$170/SF)
  - Building F: \$1,859,000 (\$179/SF)

For more information, contact:

KELLER WILLIAMS

**Mike Armanious, CCIM**

(253) 988-6115

marmanious@kw.com

ROSEN~HARBOTTLE CRE

**Caleb Farnworth, CCIM**

(425) 289-2235

calebf@rosenharbottle.com

Keller Williams | 7525 28th Street W, University Place, WA  
phone: (253) 460-8640 fax: (253) 460-8650 | www.kw.com

The information provided has been obtained from sources believed reliable. While we do not doubt its accuracy, we have not verified and make no guarantee, warranty or representation about it. It is your sole responsibility to independently confirm its accuracy and completeness.

# GATEWAY POINTE BUSINESS PARK

2601-2715 Jahn Avenue NW, Gig Harbor, WA 98335

## Availability

- Click on Suite Number to jump to Floor Plan -

SUITE	SQUARE FEET	CONTIGUOUS	RENT/MO	\$/SF	AVAILABLE
<a href="#">A-01</a>	2,311	5,244	\$2,600	\$13.50	30 DAYS
<a href="#">A-04</a>	1,395	5,244	\$1,569	\$13.50	NOW
<a href="#">A-06</a>	1,538	5,244	\$1,730	\$13.50	NOW
<a href="#">A-11</a>	760	1,489	\$792	\$12.50	NOW
<a href="#">A-12</a>	729	1,489	\$434	\$7.80	NOW
<a href="#">C-04</a>	1,391		\$1,565	\$13.50	NOW
<a href="#">D-07</a>	2,279	5,140	\$2,564	\$13.50	NOW
<a href="#">D-10</a>	2,861	5,140	\$2,980	\$12.50	NOW
<a href="#">E-01</a>	1,544	6,994	\$1,737	\$13.50	NOW
<a href="#">E-07</a>	1,514	6,994	\$1,577	\$12.50	NOW
<a href="#">E-08</a>	764	6,994	\$796	\$12.50	NOW
<a href="#">E-09</a>	2,375	6,994	\$2,474	\$12.50	NOW
<a href="#">E-12</a>	797	6,994	\$830	\$12.50	NOW
<a href="#">F-10</a>	1,756		\$1,829	\$12.50	NOW
<a href="#">H-06</a>	2,940		\$3,308	\$13.50	NOW
<a href="#">Full Bldg</a>	10,380		\$11,245	\$13.00	60 DAYS

Keller Williams | 7525 28th Street W, University Place, WA  
phone: (253) 460-8640 fax: (253) 460-8650 | www.kw.com

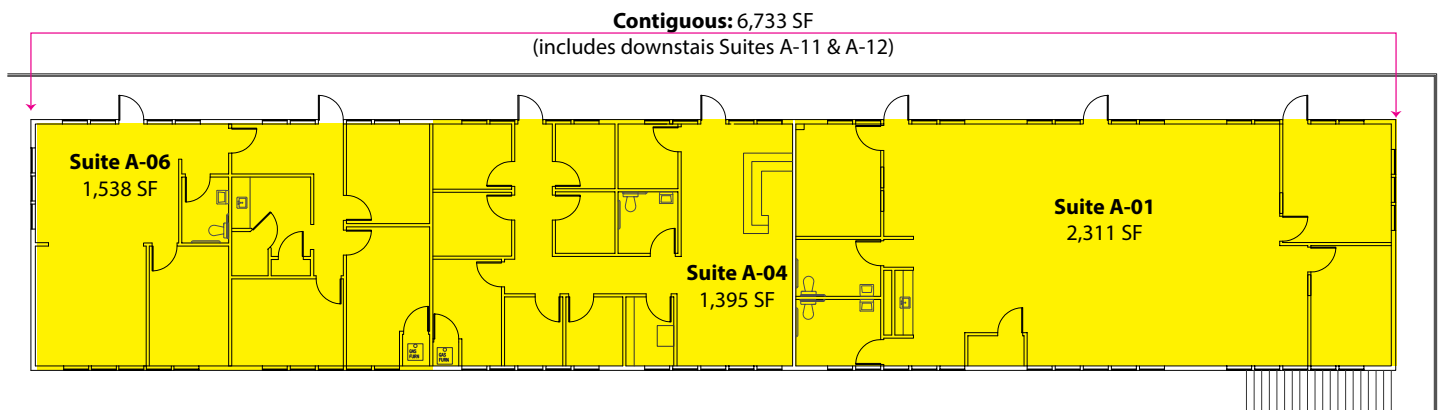
The information provided has been obtained from sources believed reliable. While we do not doubt its accuracy, we have not verified and make no guarantee, warranty or representation about it. It is your sole responsibility to independently confirm its accuracy and completeness.

# GATEWAY POINTE BUSINESS PARK

2601-2715 Jahn Avenue NW, Gig Harbor, WA 98335

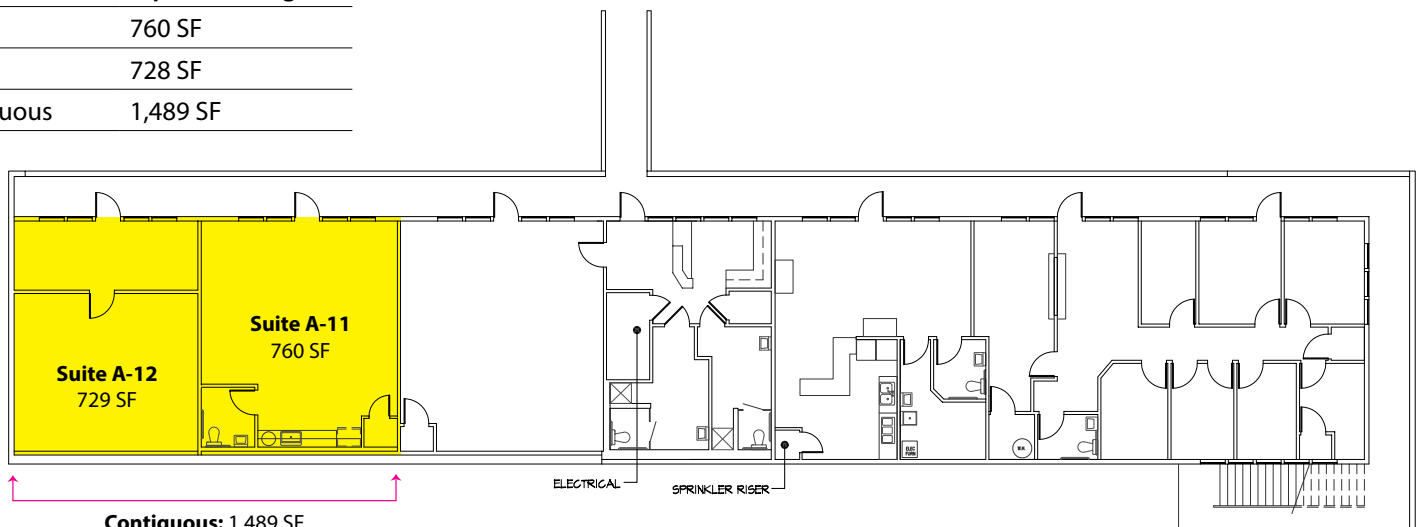
## Building A - 2<sup>nd</sup> Floor

Suite	Square Footage
A-01	2,311 SF
A-04	1,395 SF
A-06	1,538 SF
Contiguous	5,244 SF - 6,733 SF



## Building A - 1<sup>st</sup> Floor

Suite	Square Footage
A-11	760 SF
A-12	728 SF
Contiguous	1,489 SF



**Contiguous: 1,489 SF**  
(Contiguous with Suites A-01 - A-06  
for 6,733 SF total.)

Keller Williams | 7525 28th Street W, University Place, WA  
phone: (253) 460-8640 fax: (253) 460-8650 | [www.kw.com](http://www.kw.com)

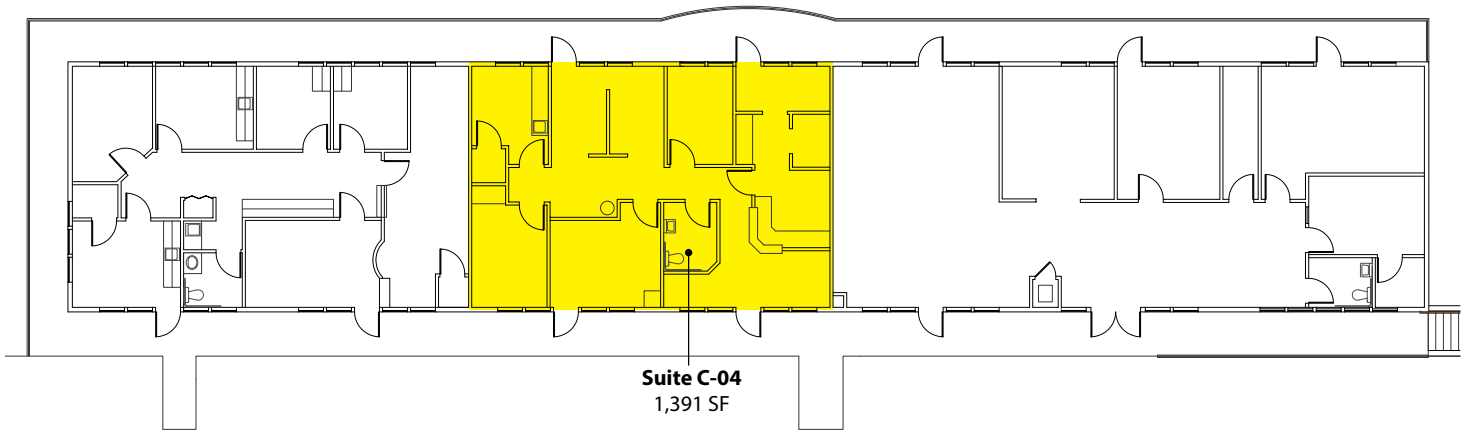
The information provided has been obtained from sources believed reliable. While we do not doubt its accuracy, we have not verified and make no guarantee, warranty or representation about it. It is your sole responsibility to independently confirm its accuracy and completeness.

# GATEWAY POINTE BUSINESS PARK

2601-2715 Jahn Avenue NW, Gig Harbor, WA 98335

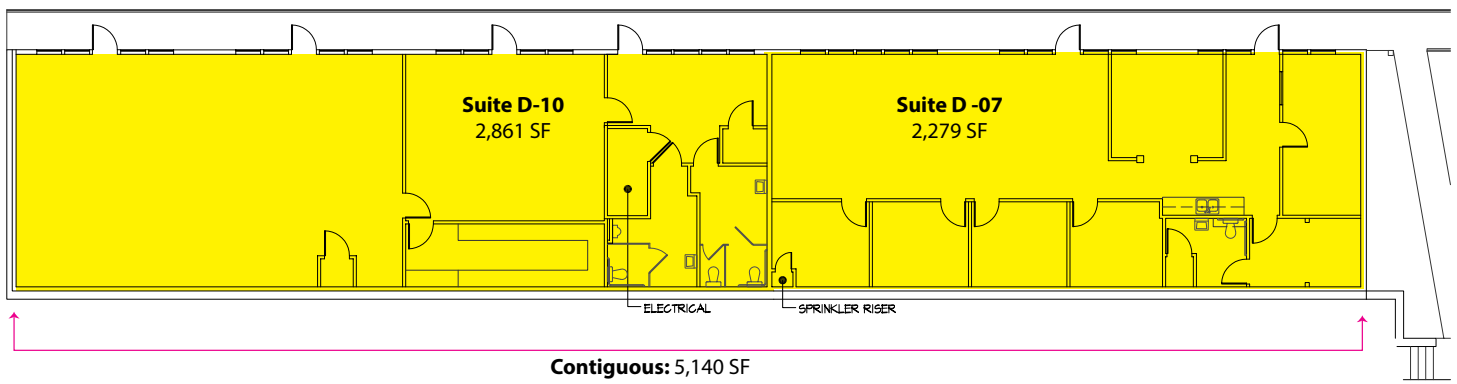
## Building C - 2<sup>nd</sup> Floor

Suite	Square Footage
C-04	1,391 SF



## Building D - 1<sup>st</sup> Floor

Suite	Square Footage
D-07	2,279 SF
D-10	2,861 SF
Contiguous	5,140 SF



Keller Williams | 7525 28th Street W, University Place, WA  
phone: (253) 460-8640 fax: (253) 460-8650 | [www.kw.com](http://www.kw.com)

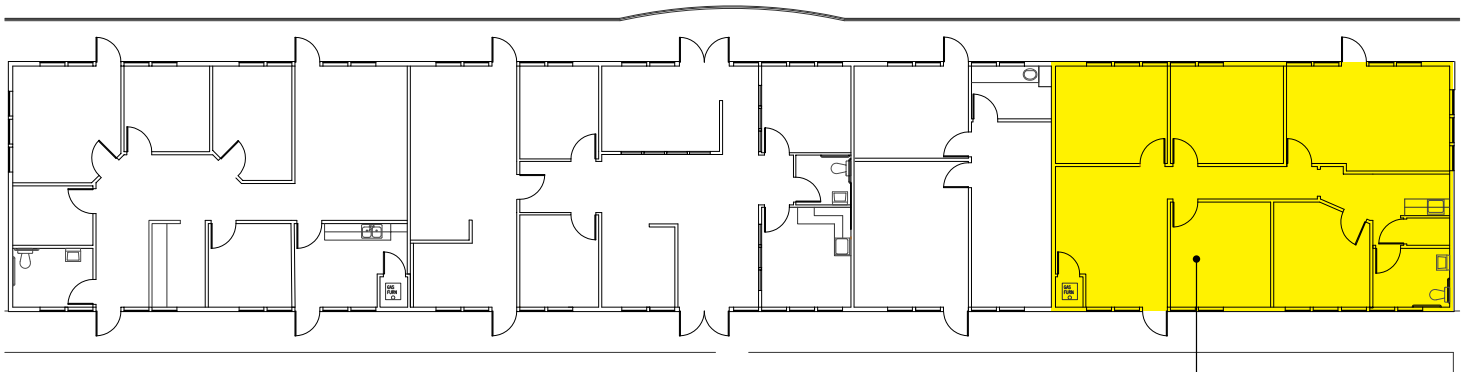
The information provided has been obtained from sources believed reliable. While we do not doubt its accuracy, we have not verified and make no guarantee, warranty or representation about it. It is your sole responsibility to independently confirm its accuracy and completeness.

# GATEWAY POINTE BUSINESS PARK

2601-2715 Jahn Avenue NW, Gig Harbor, WA 98335

## Building E - 2<sup>nd</sup> Floor

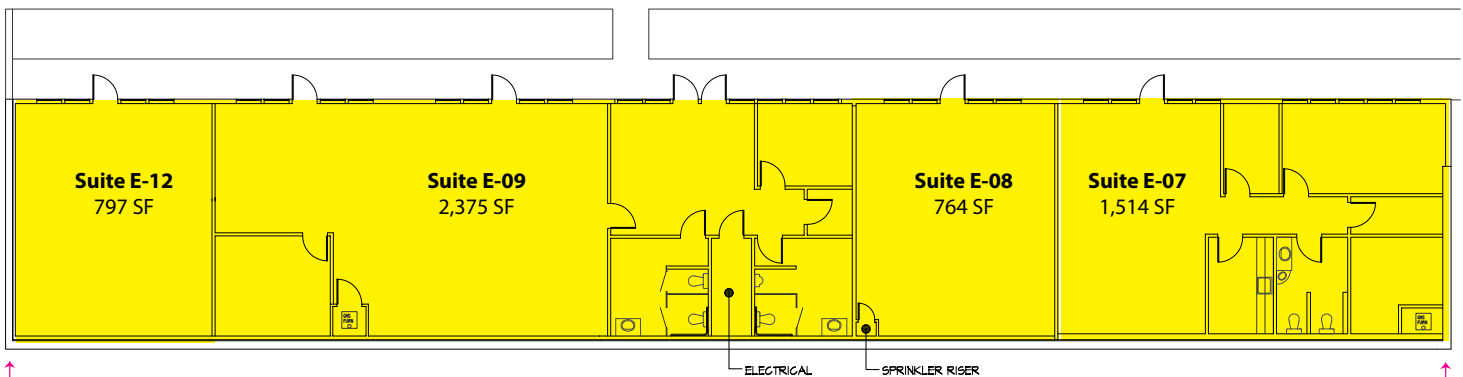
Suite	Square Footage
E-01	1,544 SF



**Suite E-01**  
1,544 SF  
(Contiguous with downstairs Suites E-06 - E-12)

## Building E - 1<sup>st</sup> Floor

Suite	Square Footage
E-07	1,514 SF
E-08	764 SF
E-09	2,375 SF
E-12	797 SF
Contiguous	5,450 SF-6,994 SF



**Contiguous: 6,994 SF**  
(includes upstairs Suite E-01)

Keller Williams | 7525 28th Street W, University Place, WA  
phone: (253) 460-8640 fax: (253) 460-8650 | [www.kw.com](http://www.kw.com)

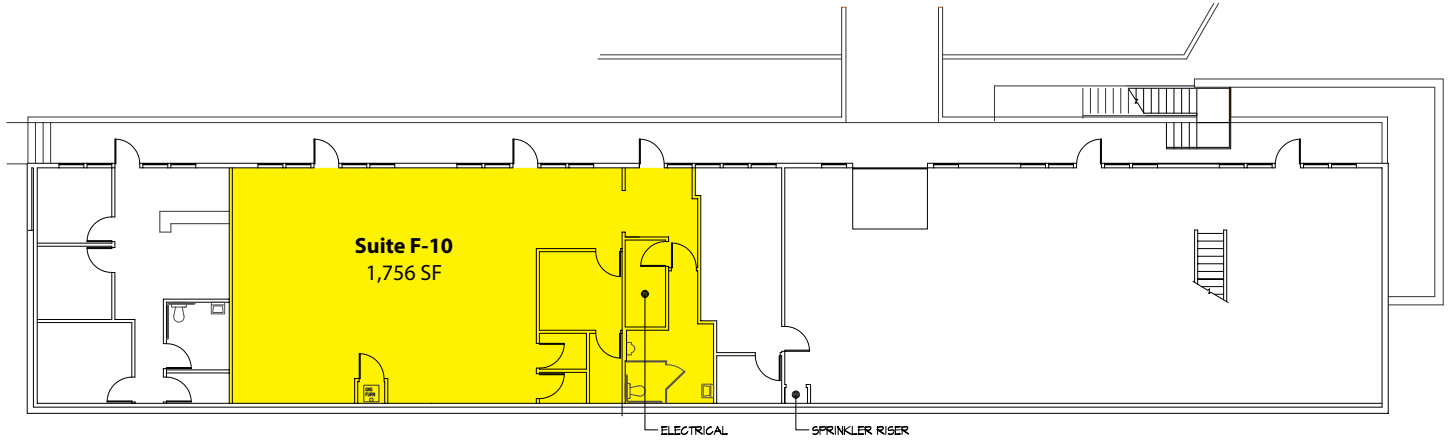
The information provided has been obtained from sources believed reliable. While we do not doubt its accuracy, we have not verified and make no guarantee, warranty or representation about it. It is your sole responsibility to independently confirm its accuracy and completeness.

# GATEWAY POINTE BUSINESS PARK

2601-2715 Jahn Avenue NW, Gig Harbor, WA 98335

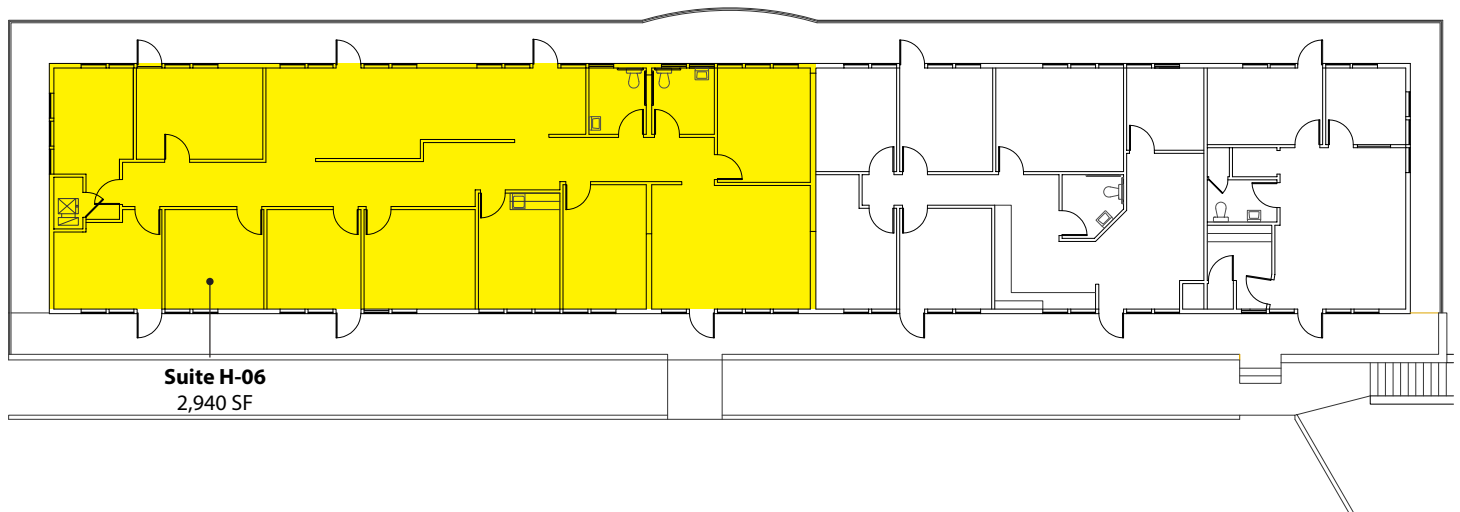
## Building F - 1<sup>st</sup> Floor

Suite	Square Footage
F-10	1,756 SF



## Building H - 2<sup>nd</sup> Floor

Suite	Square Footage
H-06	2,940 SF



Keller Williams | 7525 28th Street W, University Place, WA  
phone: (253) 460-8640 fax: (253) 460-8650 | [www.kw.com](http://www.kw.com)

The information provided has been obtained from sources believed reliable. While we do not doubt its accuracy, we have not verified and make no guarantee, warranty or representation about it. It is your sole responsibility to independently confirm its accuracy and completeness.

# GATEWAY POINTE BUSINESS PARK

2601-2715 Jahn Avenue NW, Gig Harbor, WA 98335

## Site Plan

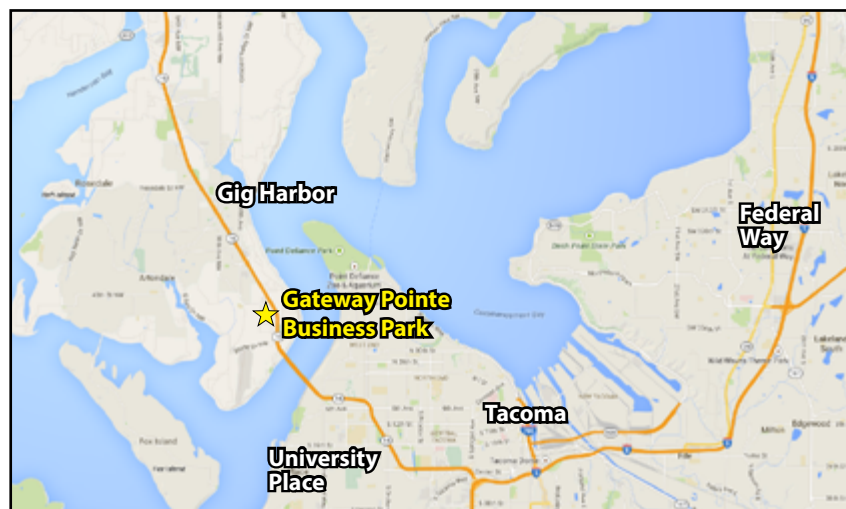


Keller Williams | 7525 28th Street W, University Place, WA  
phone: (253) 460-8640 fax: (253) 460-8650 | [www.kw.com](http://www.kw.com)

The information provided has been obtained from sources believed reliable. While we do not doubt its accuracy, we have not verified and make no guarantee, warranty or representation about it. It is your sole responsibility to independently confirm its accuracy and completeness.

# GATEWAY POINTE BUSINESS PARK

2601-2715 Jahn Avenue NW, Gig Harbor, WA 98335



For more information, contact:

KELLER WILLIAMS

**Mike Armanious, CCIM**

(253) 988-6115

marmanious@kw.com

ROSEN~HARBOTTLE CRE

**Caleb Farnworth, CCIM**

(425) 289-2235

calebf@rosenharbottle.com

Keller Williams | 7525 28th Street W, University Place, WA  
phone: (253) 460-8640 fax: (253) 460-8650 | www.kw.com

The information provided has been obtained from sources believed reliable. While we do not doubt its accuracy, we have not verified and make no guarantee, warranty or representation about it. It is your sole responsibility to independently confirm its accuracy and completeness.