

**DOWNTOWN OFFICE
LEASE**



RAINIER BUILDING

455 Rainier Boulevard N, Issaquah, WA

Connor Feuerberg

425.279.7943

connor@rosenharbottle.com

Brian Stewart

425.289.2222

brians@rosenharbottle.com

425.454.3030
rosenharbottle.com

PO Box 5003
Bellevue, WA 98009 - 5003



RARE OFFICE SPACES IN HEART OF DOWNTOWN ISSAQUAH

183 SF - 627 SF Available

FEATURES:

- Additional storage space available at the building
- Short walk to many great restaurants and retail amenities
- Private and street parking
- Flexible lease terms
- Quick access to I-90
- Issaquah is home to hiking trails, farmer's markets, seasonal events, and a salmon hatchery



(Credit: www.preservewa.org)

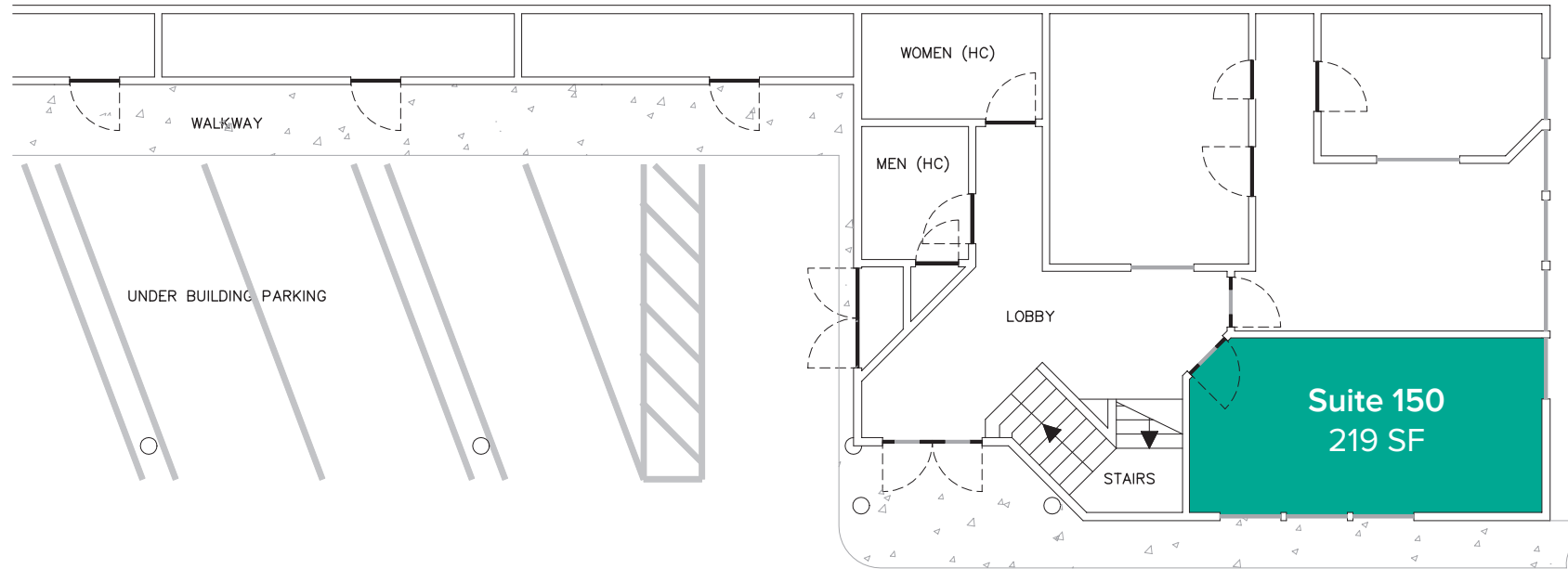


(Credit: www.issaquahfish.org)

FIRST LEVEL FLOOR PLAN

Suite	Square Feet	Rent
150	219 SF	\$850/Month, Gross

Notes: Front street view. Open work area. Available 4/1/2020



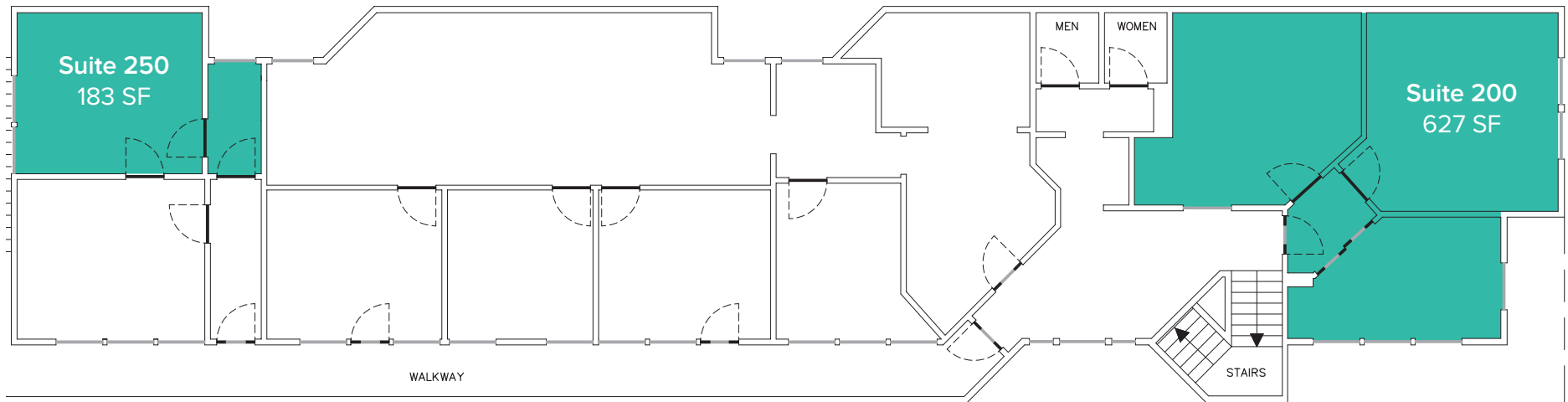
SECOND LEVEL FLOOR PLAN

Suite	Square Feet	Rent
200	627 SF	\$2,000/Month, Gross

Notes: Front street view. 2 private offices. 1 conference room.

250	183 SF	\$750/Month, Gross
-----	--------	--------------------

Notes: Rare executive office space. Small reception area.



LOCATION MAP

