

RETAIL
LEASE



EASTGATE MARKETPLACE

460 - 520 N Wilbur Avenue | Walla Walla, WA 99362

Caleb Farnworth, CCIM

425.289.2235

calebf@rosenharbottle.com

Todd Wright

509.386.2471

toddwright@windermere.com

425.454.3030
rosenharbottle.com

PO Box 5003
Bellevue, WA 98009 - 5003



STAPLES, HARBOR FREIGHT, & ALBERTSON'S ANCHORED RETAIL CENTER

1,747 SF - 16,147 SF AVAILABLE

Retail Rate: \$14.00/SF

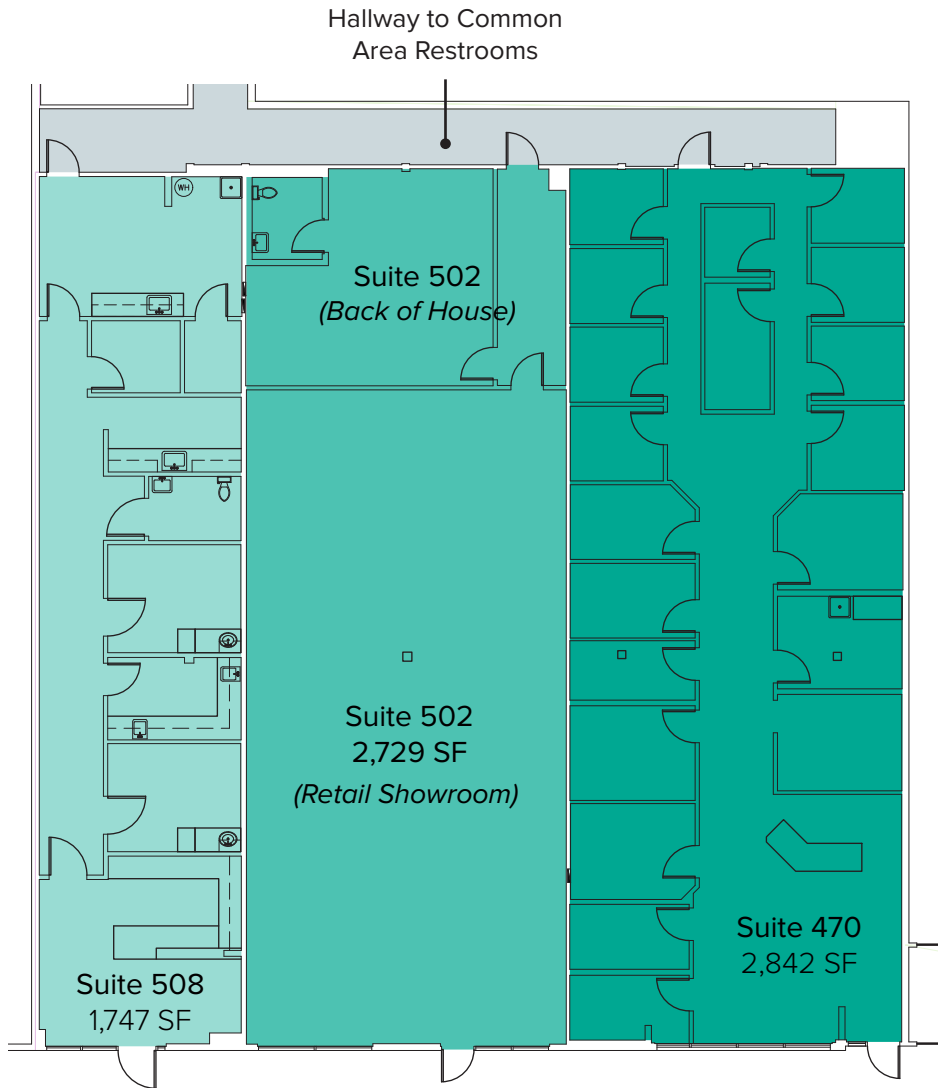
Retail NNN: \$4.60/SF

PROPERTY DETAILS:

- Building Signage
- Tenant Improvement allowance available
- Quick access to Highway-12 and Walla Walla Regional Airport
- Abundant parking
- Neighboring retailers include Joann Fabrics and Crafts, Dollar Tree, Rite Aid, McDonald's, and Subway



AS-IS FLOOR PLAN



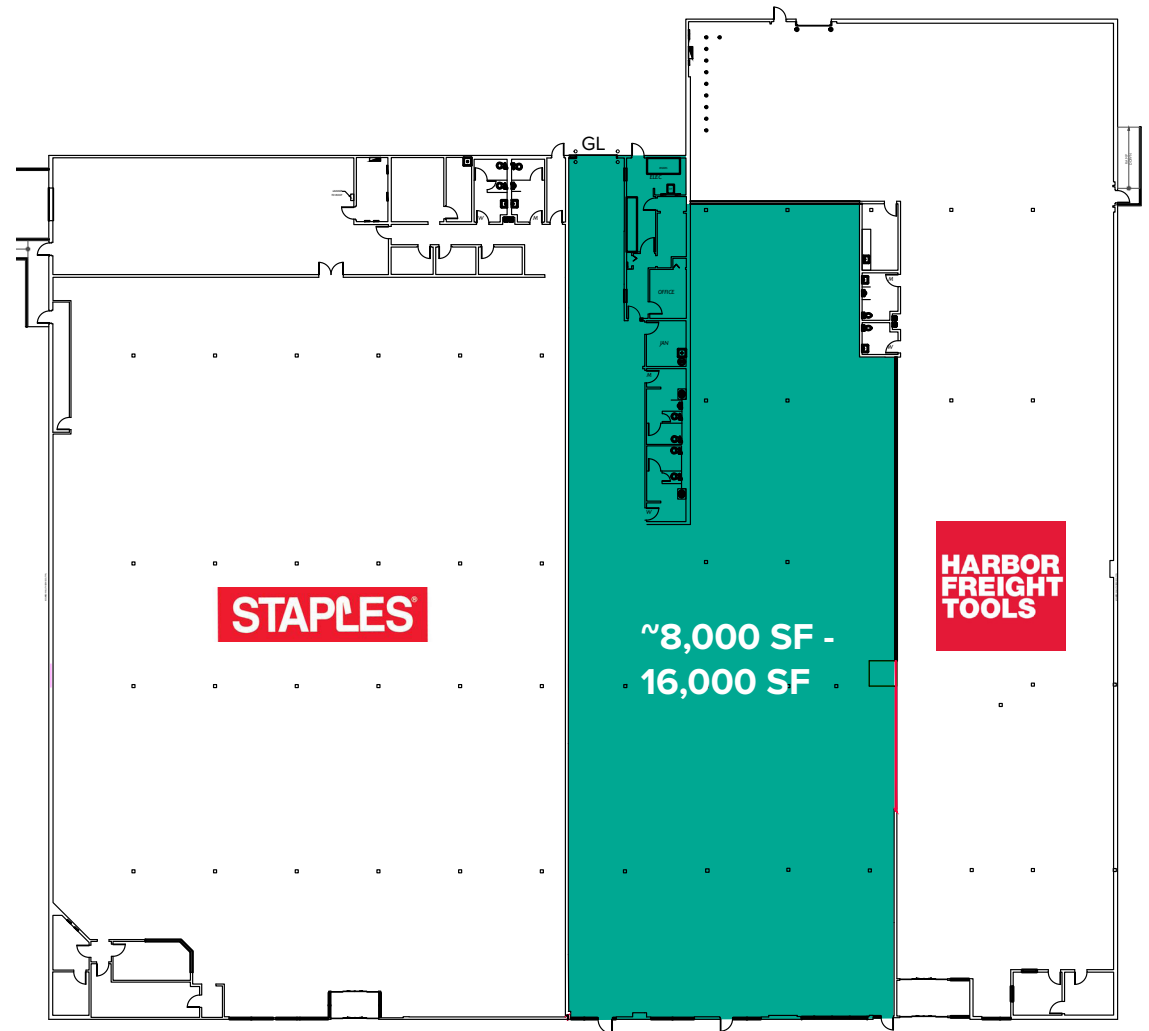
SUITE DETAILS

Suite	Square Feet	Rate
470	2,842 SF - 7,318 SF	\$14.00/SF, NNN
Former tanning salon with several private rooms & reception. Contiguous with Suites 502 & 508 for a total of 7,318 SF. Available now.		
502	2,729 SF - 7,318 SF	\$14.00/SF, NNN
Retail area with showroom area, back of house space, & 1 restroom. Contiguous with Suites 470 & 508 for a total of 7,318 SF. Available now.		
508	1,747 SF - 7,318 SF	\$14.00/SF, NNN
Existing medical office build-out with reception, private rooms, & 1 restroom. Contiguous with Suites 470 & 502 for a total of 7,318 SF. Available now.		

SAMPLE FLOOR PLAN

AMENITIES & FEATURES:

- Junior Anchor space
- ~8,000 SF - 16,000 SF available
- Direct entry & separate back entrance
- Open work area
- Internal restrooms
- Grade-level loading door



LOCATION MAP

