

612 BUILDING

612 S Lucile Street | Seattle, WA



CREATIVE OFFICE SPACE

1,440 SF Available

\$3,500/Month + Utilities

FEATURES:

- 3 Private Offices and Restroom
- Abundant Parking and HVAC
- Located in Seattle Design Center District
- Close Proximity to Georgetown Restaurants, Breweries, and Retail/Art Shops
- Immediate Access to Airport Way, Hwy-99, and I-5



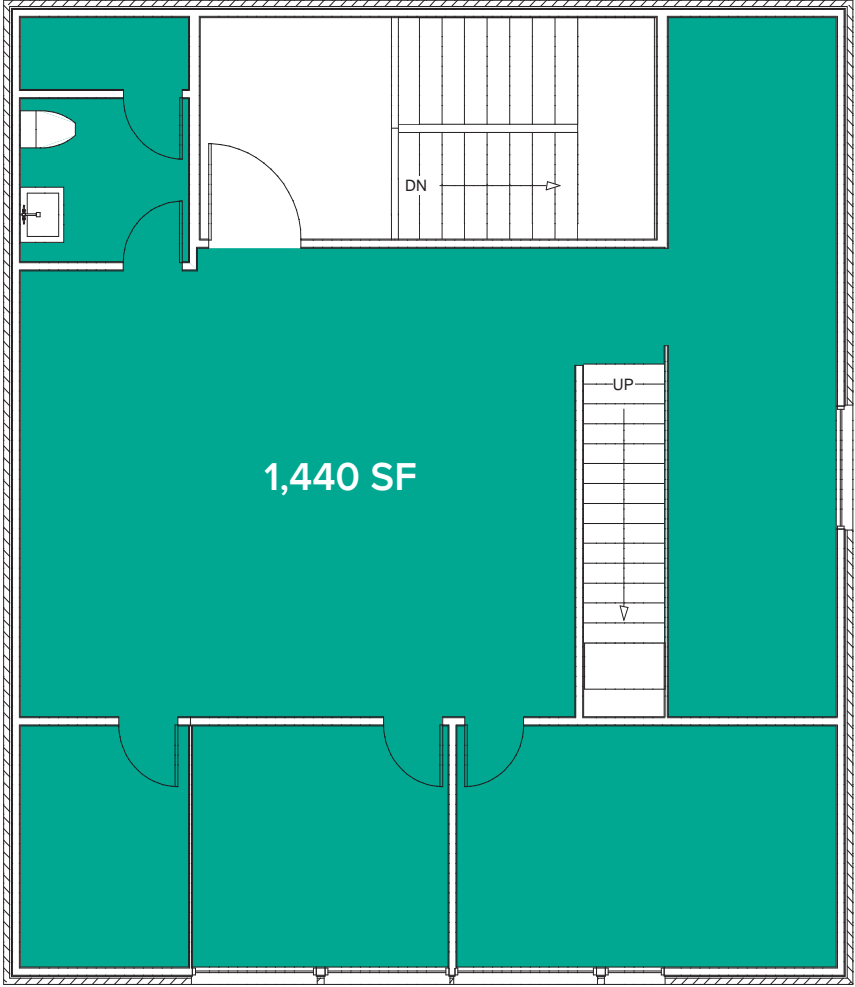
Caleb Farnworth, CCIM

425.289.2235

calebf@rosenharbottle.com



THIRD LEVEL FLOOR PLAN



LOCATION MAP



NEARBY AMENITIES:

- Fran's Chocolate
- Fonda La Catrina
- Georgetown Ballroom
- Machine House Brewery
- Brass Tracks
- Star Brass Lounge
- Wax Sabbath Spa
- Zippy's Giant Burger
- Blu Grouse
- Elysian Brewery
- Forte Coffee Roaster
- Lect's Soup Stop
- Pho Sriracha
- Maro Polo Bar & Grill
- Sandbox Sports
- Georgetown Brewing
- Krab Jab Studio
- Subway