

WAREHOUSE/OFFICE
LEASE



NORTH SEATTLE INDUSTRIAL BUILDING

938 North 127th Street | Seattle, WA 98133

Brian Stewart

425.289.2222

brians@rosenharbottle.com

425.454.3030
rosenharbottle.com

Stossi Tsantilas

425.279.7943

stossit@rosenharbottle.com

PO Box 5003
Bellevue, WA 98009 - 5003





SEATTLE WAREHOUSE/ OFFICE SPACE

6,604 SF Available

PROPERTY DETAILS:

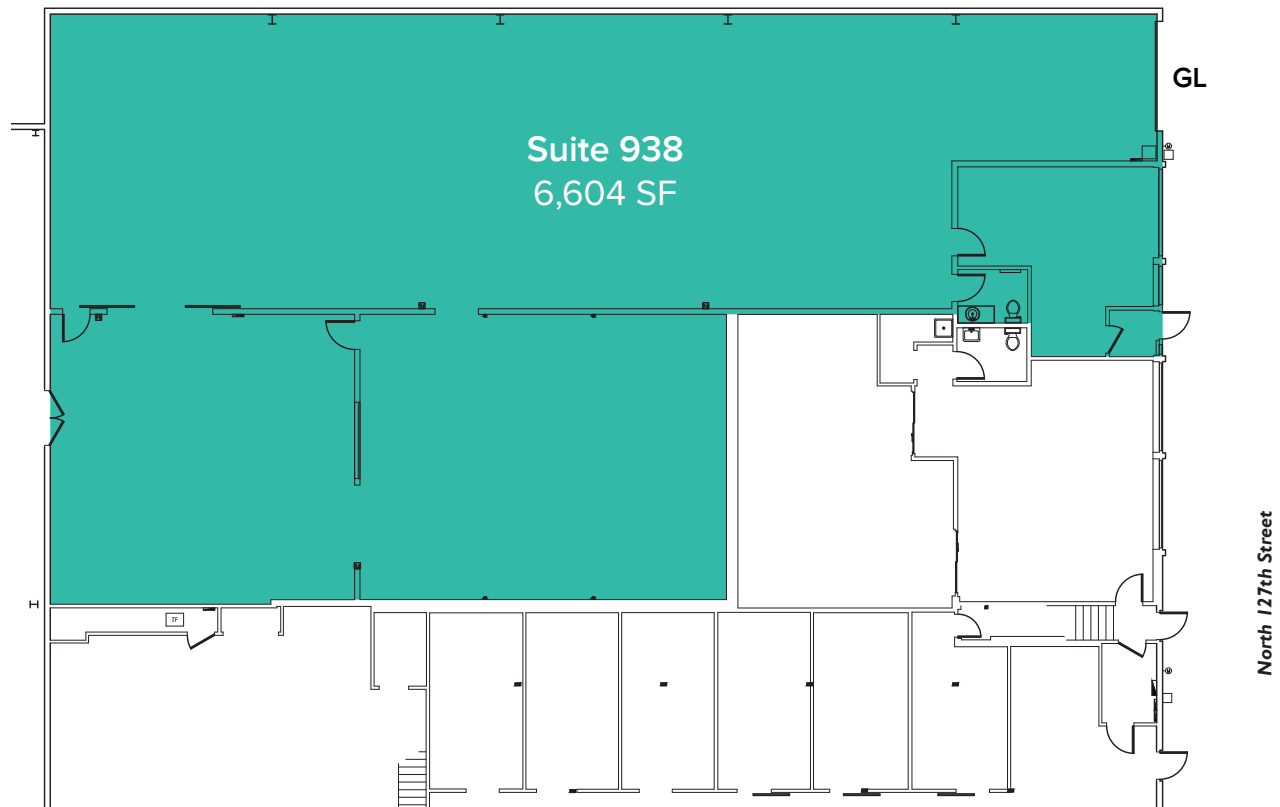
- Rare North Seattle location
- Heavy power available
- Future redevelopment potential - Zoning: NC3-75 (M)
- Minutes from retail and restaurant amenities on Aurora Avenue
- Quick access to I-5 and future light rail station



The information provided herein has been obtained from sources believed to be reliable, but no representation or warranty, express or implied, is made with respect to the accuracy or completeness of any such information. Each prospective buyer or tenant should independently investigate, evaluate and verify all information provided herein and any other matters deemed material. Please consult your attorney, tax advisor or other professional advisor. The terms of sale or lease set forth herein are subject to change or withdrawal at any time and without notice.

FIRST LEVEL FLOOR PLAN

Suite	Square Feet	Rate	Notes
938	6,604 SF	\$1.25/SF, NNN	Warehouse with small office and Grade-Level loading. 16' Clear Height. Available now.



The information provided herein has been obtained from sources believed to be reliable, but no representation or warranty, express or implied, is made with respect to the accuracy or completeness of any such information. Each prospective buyer or tenant should independently investigate, evaluate and verify all information provided herein and any other matters deemed material. Please consult your attorney, tax advisor or other professional advisor. The terms of sale or lease set forth herein are subject to change or withdrawal at any time and without notice.

LOCATION MAP

