

OFFICE  
LEASE



# LYNNWOOD FINANCIAL CENTER

19009 33rd Avenue W | Lynnwood, WA

**Brian Stewart**

425.289.2222

brians@rosenharbottle.com

**Stossi Tsantilas**

425.279.7943

stossit@rosenharbottle.com

425.454.3030  
rosenharbottle.com

PO Box 5003  
Bellevue, WA 98009 - 5003







# CORNER OFFICE SPACES NEAR ALDERWOOD MALL

**1,091 SF - 5,566 SF Available**

**\$27.00/SF, Full Service**

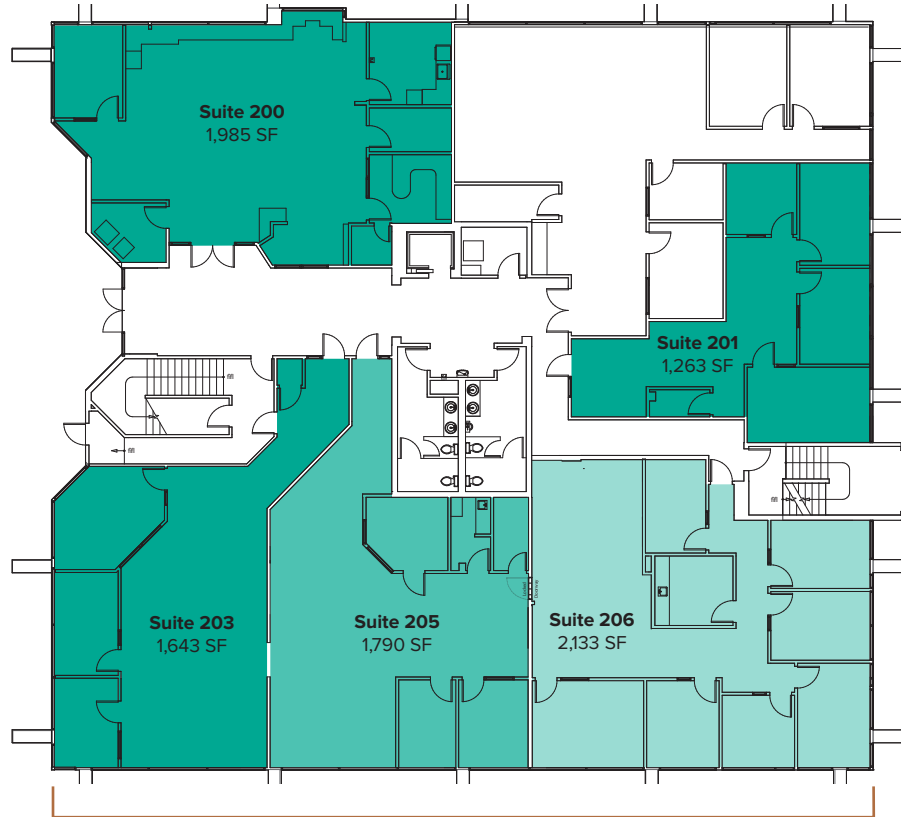
## FEATURES:

- Borders Alderwood Mall & Many Restaurants & Amenities
- Exterior building signage available for leases over 3,000 SF
- Immediate Access to I-5 & I-405
- Less than 1 Mile from Lynnwood Transit Center
- Ample Parking

The information provided herein has been obtained from sources believed to be reliable, but no representation or warranty, express or implied, is made with respect to the accuracy or completeness of any such information. Each prospective buyer or tenant should independently investigate, evaluate and verify all information provided herein and any other matters deemed material. Please consult your attorney, tax advisor or other professional advisor. The terms of sale or lease set forth herein are subject to change or withdrawal at any time and without notice.

# SECOND LEVEL FLOOR PLAN

Suite	Square Feet	Rate	Notes
200	1,985 SF	\$27.00/SF, Full Service	Office space with reception area, private offices, and a break room with a kitchenette. <b>Available Now.</b>
201	1,263 SF	\$27.00/SF, Full Service	Office space with 3 private offices, conference room, and storage room. <b>Available 1/1/2025.</b>
203/205/206	1,643 SF - 5,566 SF	\$27.00/SF, Full Service	Office space with flexible configurations. Includes private offices, open work area, and break rooms with kitchenettes. <b>Available 10/1/2024.</b>

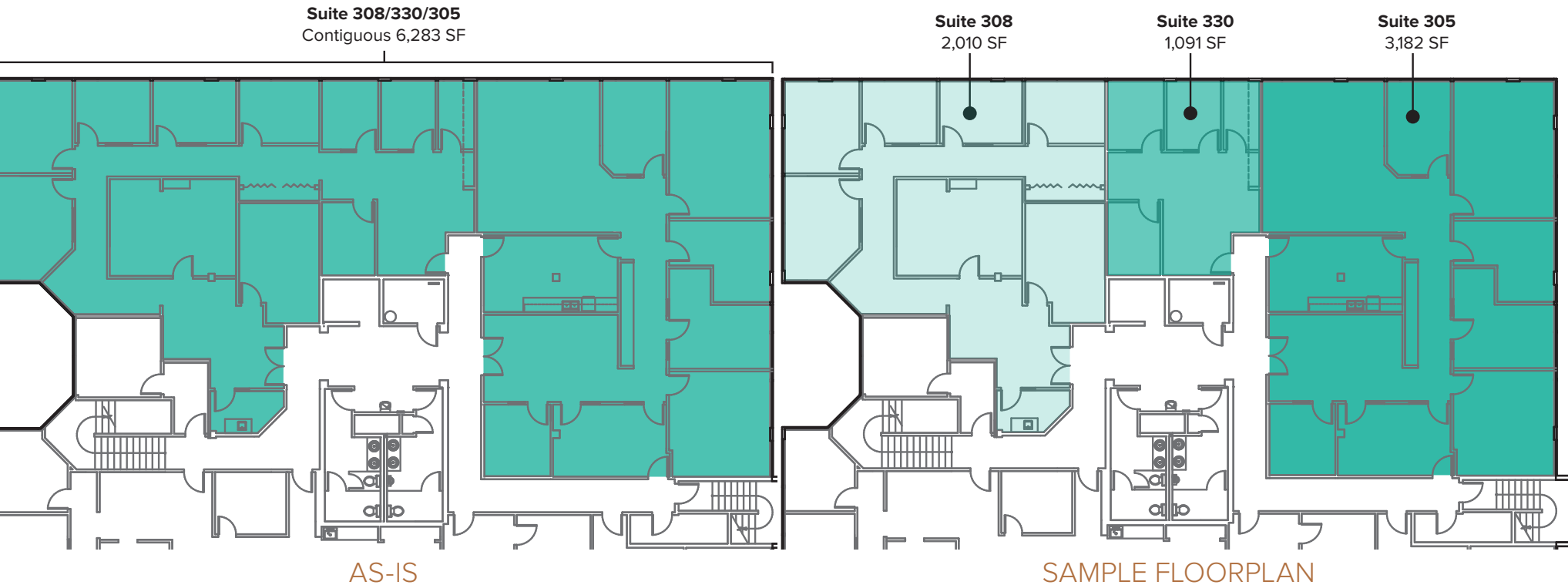


Contiguous 5,566 SF

The information provided herein has been obtained from sources believed to be reliable, but no representation or warranty, express or implied, is made with respect to the accuracy or completeness of any such information. Each prospective buyer or tenant should independently investigate, evaluate and verify all information provided herein and any other matters deemed material. Please consult your attorney, tax advisor or other professional advisor. The terms of sale or lease set forth herein are subject to change or withdrawal at any time and without notice.

# THIRD LEVEL FLOOR PLAN (AS-IS & SAMPLE)

Suite	Square Feet	Rate	Notes
308	2,010 SF - 6,283 SF	\$27.00/SF, Full Service	Endcap Office Space, 5 private offices, 2 conference rooms, reception area. <b>Contiguous with 330 &amp; 305. Available with 30-days' notice.</b>
330	1,091 SF - 6,283 SF	\$27.00/SF, Full Service	Office space with 3 private offices and open office work. conference room, and storage room. <b>Contiguous with 308 &amp; 305. Available with 30-days' notice.</b>
305	3,182 SF - 6,283 SF	\$27.00/SF, Full Service	Third floor office with private offices, conference rooms, kitchenette, and open work space. <b>Contiguous with 308 &amp; 330. Available with 30-days' notice.</b>



The information provided herein has been obtained from sources believed to be reliable, but no representation or warranty, express or implied, is made with respect to the accuracy or completeness of any such information. Each prospective buyer or tenant should independently investigate, evaluate and verify all information provided herein and any other matters deemed material. Please consult your attorney, tax advisor or other professional advisor. The terms of sale or lease set forth herein are subject to change or withdrawal at any time and without notice.



# LOCATION MAP

