

OFC/WHSE
LEASE



EASTLAKE BUSINESS PARK, Building A, C, & D

18336-18398 Redmond-Fall City Road | Redmond, WA 98052

Caleb Farnworth, CCIM

425.289.2235

calebf@rosenharbottle.com

425.454.3030
rosenharbottle.com

PO Box 5003
Bellevue, WA 98009 - 5003





EASTSIDE AVAILABILITIES: SMALL, OFC/WHSE SPACES

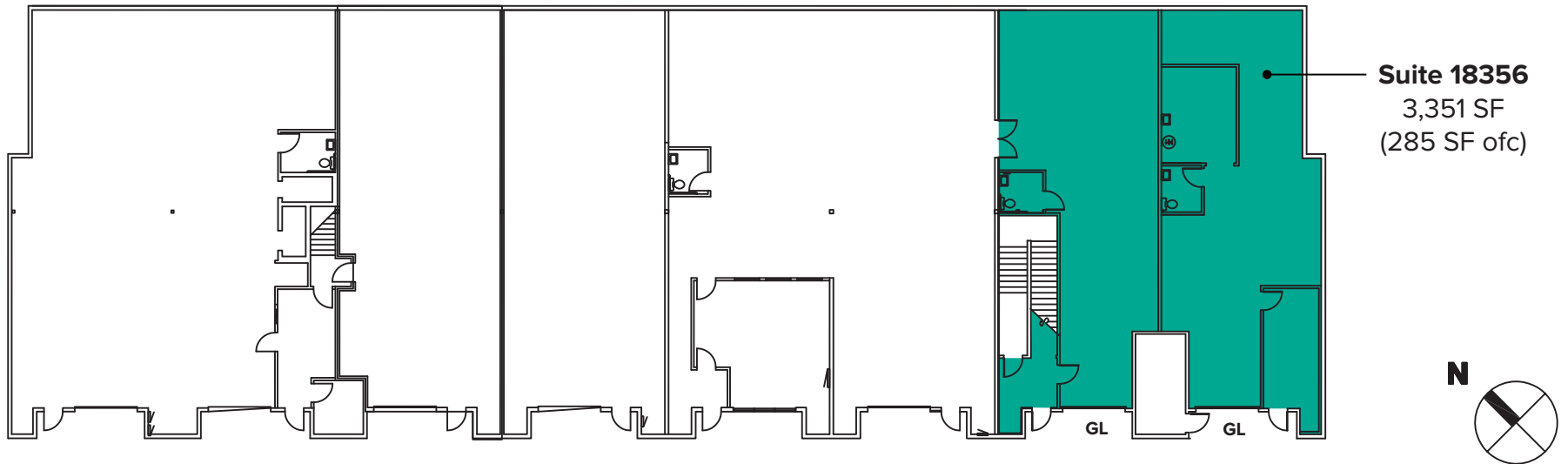
300 SF - 3,351 SF Available

PROPERTY DETAILS:

- Professional, Business Park Setting
- Quick Access to SR 520, Union Hill & Downtown Redmond
- Nearby Amenities Include Home Depot, Whole Foods, Chipotle, Target, Kohl's, Costco & More
- Located Minutes From Future Light Rail Stations

BUILDING A FLOOR PLAN

Suite	Square Feet	Rent	Notes
18356	3,351 SF (285 SF ofc)	\$3,636/Month, NNN	End cap warehouse/office space with 1 restroom and 2 GL doors. Available now.



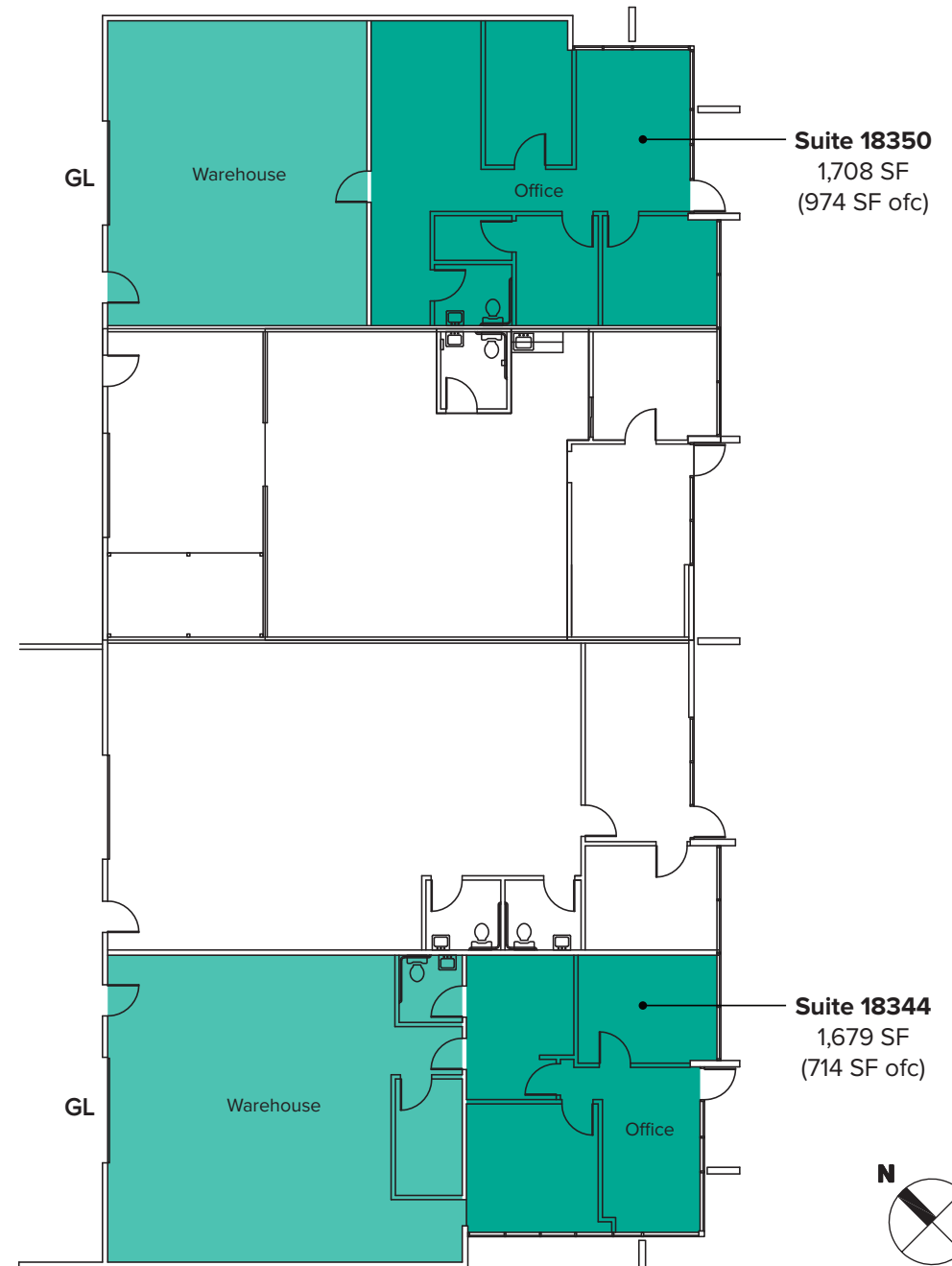
BUILDING C FLOOR PLAN

SUITE 18350 FEATURES

- Available Now
- 1,708 SF (974 SF ofc)
- \$2,682/Month, NNN
- 3 Private Offices
- 1 Restroom
- Reception Area
- Warehouse Space
- 1 GL Roll-up Loading Door
- 14' - 16' Clear Height in Warehouse

SUITE 18344 FEATURES

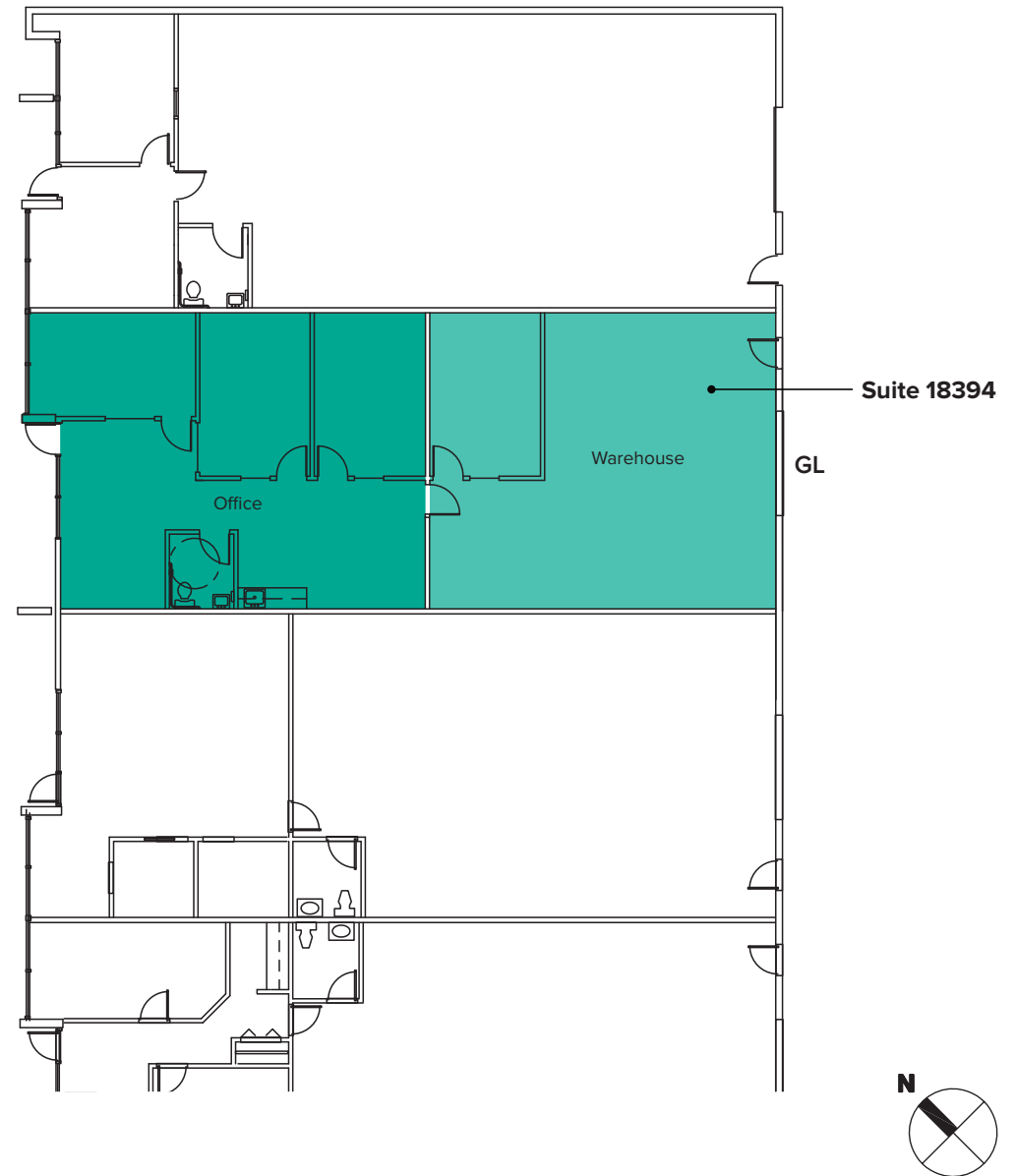
- Available 1/1/2021
- 1,679 SF (714 SF ofc)
- \$2,393/Month, NNN
- 2 Private Offices
- 1 Restroom
- Reception Area
- Warehouse Space
- 1 GL Roll-up Loading Door
- 14' - 16' Clear Height in Warehouse



BUILDING D FLOOR PLAN

SUITE 18394 FEATURES

- Available for Sublease
- 300 SF - 1,200 SF Office Available
- 400 SF - 500 SF Warehouse Available
- \$2.00/SF, Full Service
- Reception and Kitchen included
- 1 Restroom
- 1 GL Roll-up Loading Door
- 14' - 16' Clear Height in Warehouse



LOCATION MAP

