

**NEW REDUCED  
RATE**



# FORUM BUILDING

**640 NW Gilman Blvd | Issaquah, WA, 98027**

**Brian Stewart**

425.289.2222

[brians@rosenharbottle.com](mailto:brians@rosenharbottle.com)

425.454.3030  
[rosenharbottle.com](http://rosenharbottle.com)

PO Box 5003  
Bellevue, WA 98009 - 5003







# OFFICE AND MEDICAL BUILDING ON GILMAN BLVD

**738 SF Available**

**\$2,175/Month, Gross**

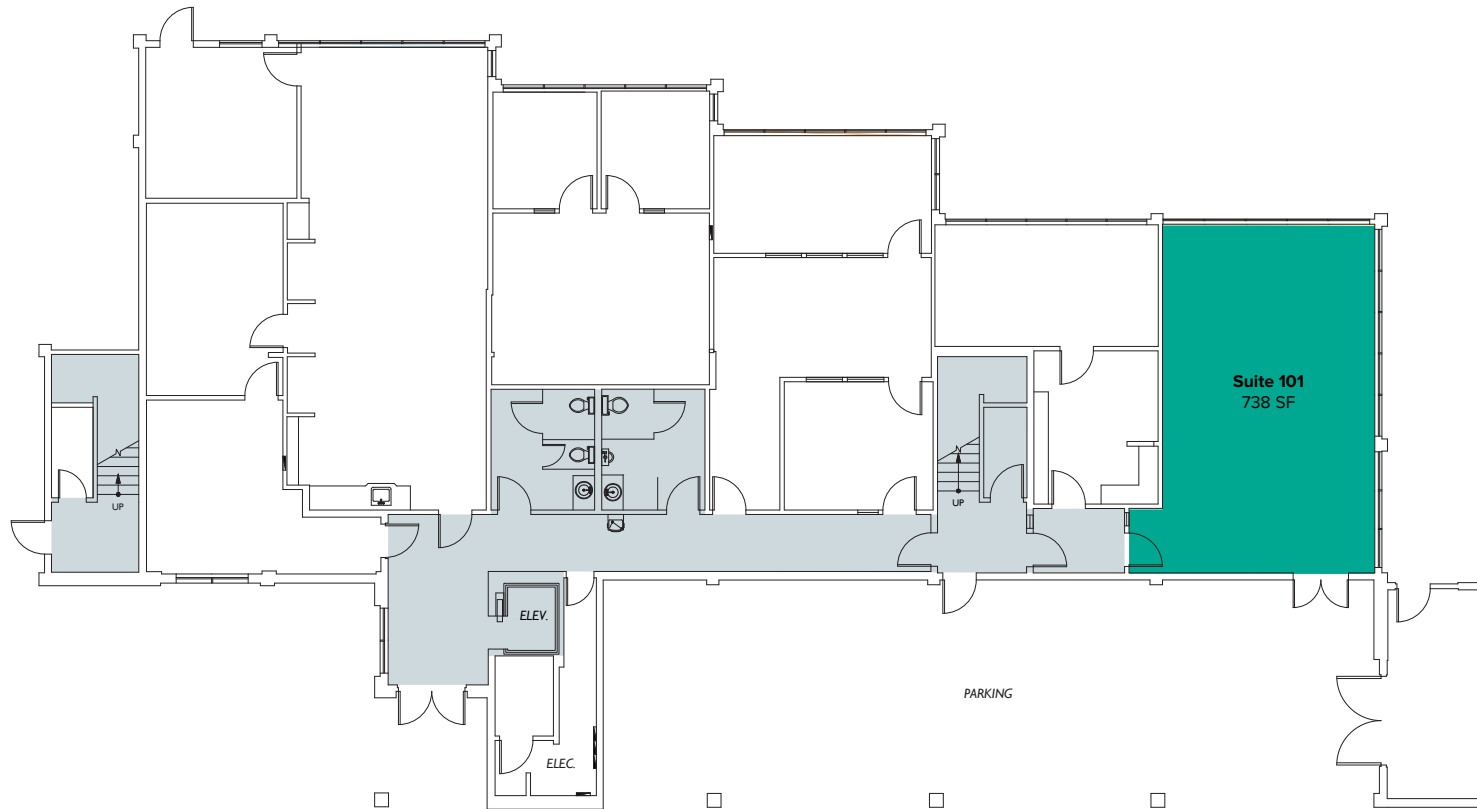
## DETAILS:

- Quick access to I-90
- Easy walking to Gilman Boulevard retail stores and restaurants
- Beautiful landscaping with Issaquah Creek view
- Common area remodel underway
- Short walk to Issaquah Preston Trail

The information provided herein has been obtained from sources believed to be reliable, but no representation or warranty, express or implied, is made with respect to the accuracy or completeness of any such information. Each prospective buyer or tenant should independently investigate, evaluate and verify all information provided herein and any other matters deemed material. Please consult your attorney, tax advisor or other professional advisor. The terms of sale or lease set forth herein are subject to change or withdrawal at any time and without notice.

# AS-IS FIRST LEVEL FLOOR PLAN

Suite	Square Feet	Rent	Notes
101	738 SF	\$2,175/Month, Gross	Office space with open work area, lobby entry, and direct entry.

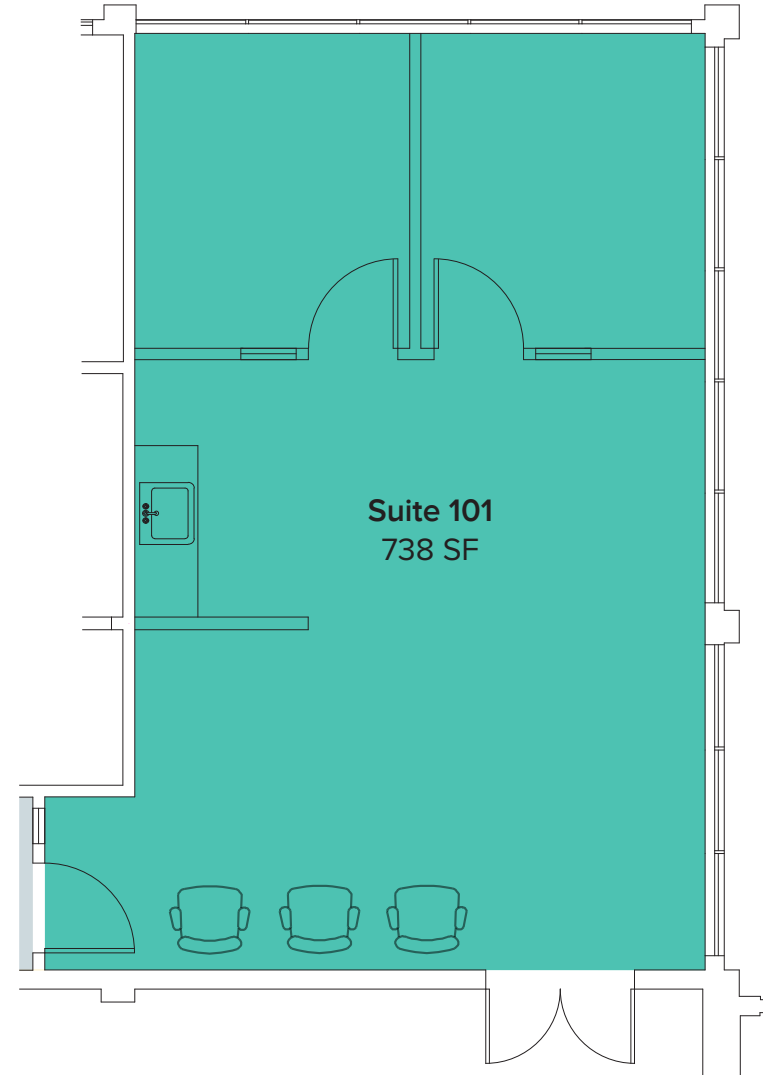


The information provided herein has been obtained from sources believed to be reliable, but no representation or warranty, express or implied, is made with respect to the accuracy or completeness of any such information. Each prospective buyer or tenant should independently investigate, evaluate and verify all information provided herein and any other matters deemed material. Please consult your attorney, tax advisor or other professional advisor. The terms of sale or lease set forth herein are subject to change or withdrawal at any time and without notice.

# SUITE 101 SAMPLE FLOOR PLAN

## FEATURES:

- 2 Private Offices
- Reception Area
- Open Office Area
- Kitchenette
- Lobby and Direct Entries





# LOCATION MAP

