

EASTLAKE BUSINESS PARK

18336-18398 Redmond-Fall City Road, Redmond, WA 98052



REDMOND INCUBATOR SPACE

| Suite | Total SF | Office SF | Rent/ Month | NNN | Total/ Month | Avail |
|---|----------|-----------|----------------|-------|-----------------|----------|
| 18346 | 1,793 SF | 505 SF | \$1,745 | \$591 | \$2,336 | 30 days |
| Notes: 1 GL, reception, 1 PO, 2 RRs and clear-span warehouse. | | | | | | |
| 18392 | 2,197 SF | 392 SF | \$2,032 | \$747 | \$2,779 | 7/1/2017 |
| Notes: 1 GL, reception, 1 PO, 1 RR and clear-span warehouse. | | | | | | |

FEATURES:

- Nearby Amenities Include Home Depot, Whole Foods, Chipotle, Jimmy John's & More
- Quick Access to SR 520
- 14' - 16' Clear Height in Warehouse
- GL Rollup Doors
- Professional, Business Park Setting



For more information, contact:

ROSEN~HARBOTTLE
COMMERCIAL REAL ESTATE

Caleb Farnworth, CCIM
(425) 289-2235
calebf@rosenharbottle.com

www.rosenharbottle.com

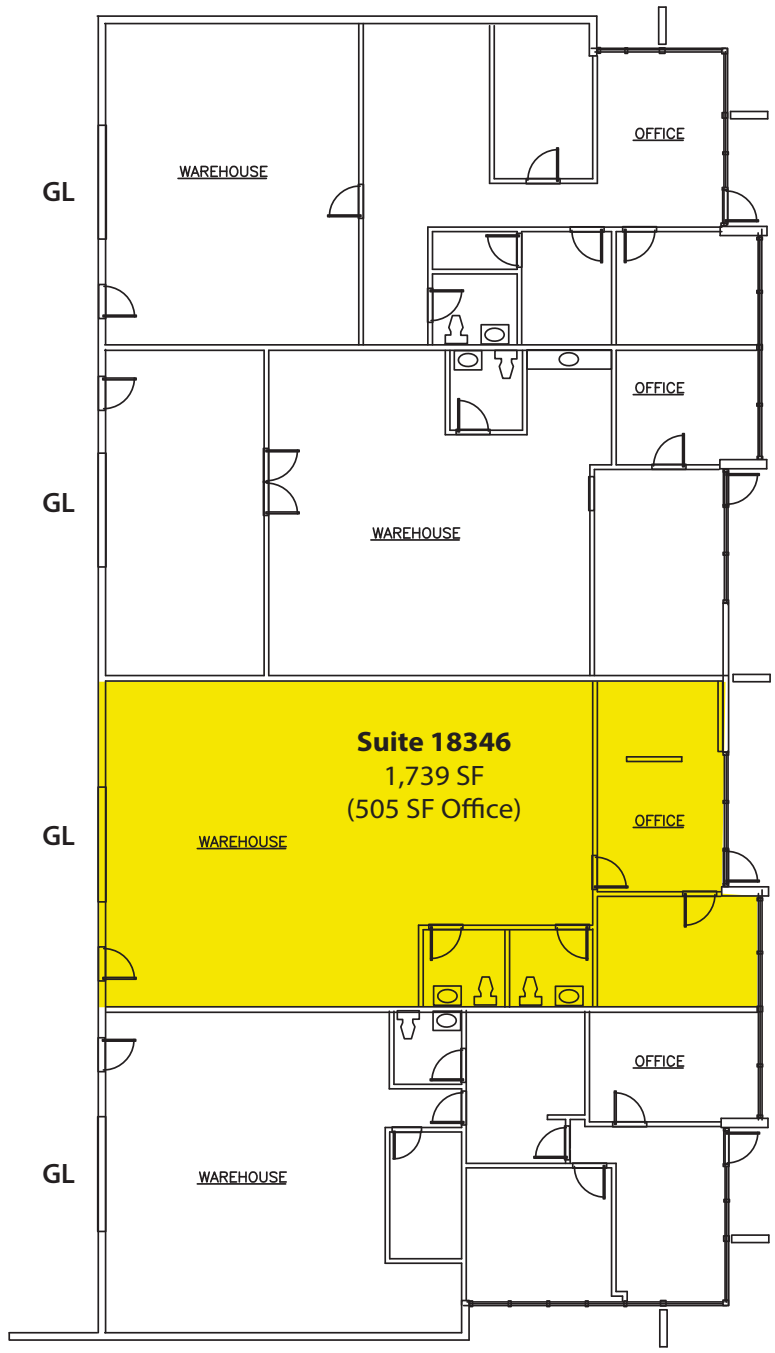
Rosen~Harbottle Commercial Real Estate | P.O. Box 5003 Bellevue, WA 98009-5003
phone: (425) 454-3030 fax: (425) 454-6705 | www.rosenharbottle.com

The information provided has been obtained from sources believed reliable. While we do not doubt its accuracy, we have not verified and make no guarantee, warranty or representation about it. It is your sole responsibility to independently confirm its accuracy and completeness.

EASTLAKE BUSINESS PARK

18336-18398 Redmond-Fall City Road, Redmond, WA 98052

SPACE AVAILABLE - BUILDING C



Rosen~Harbottle Commercial Real Estate | P.O. Box 5003 Bellevue, WA 98009-5003
phone: (425) 454-3030 fax: (425) 454-6705 | www.rosenharbottle.com

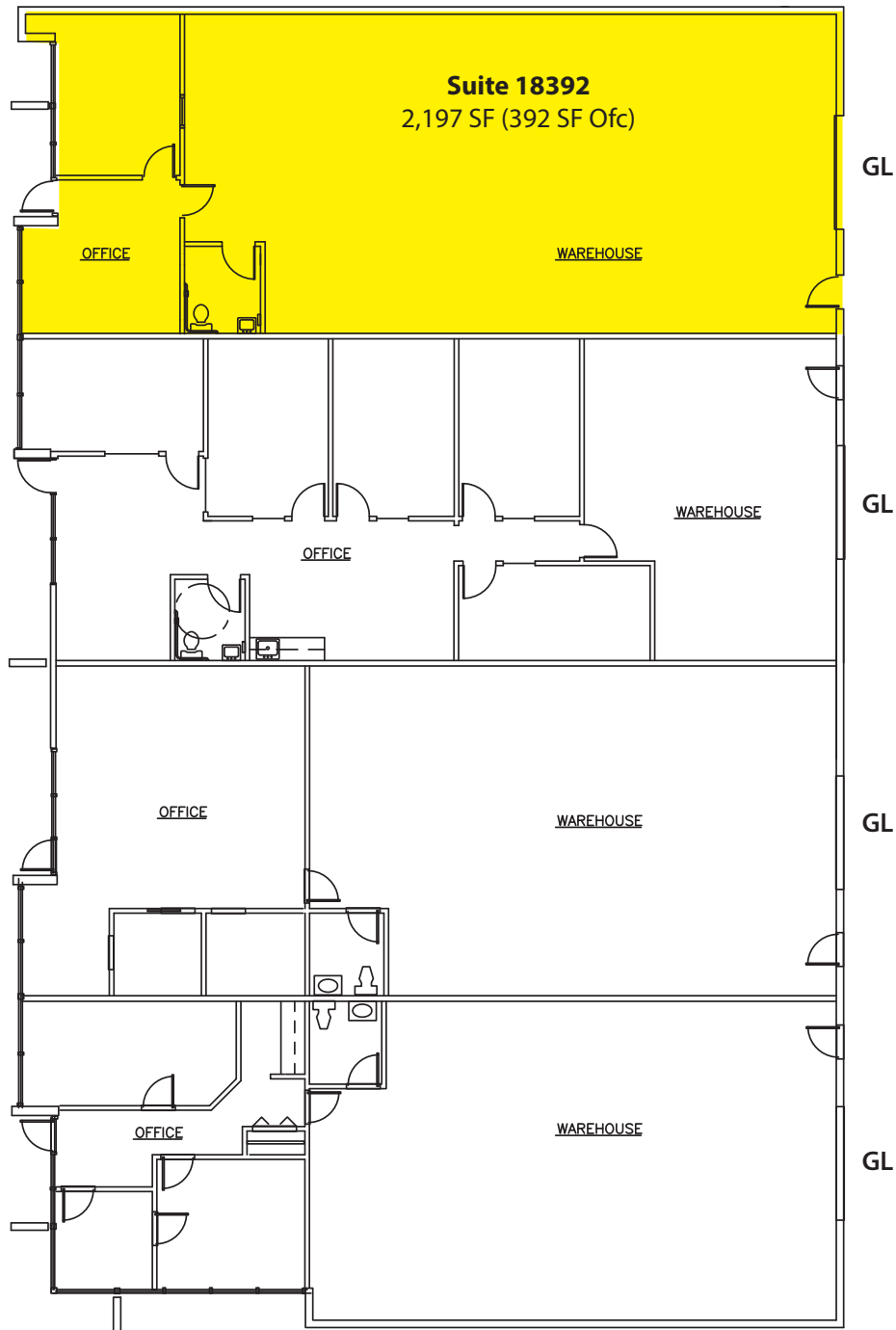
The information provided has been obtained from sources believed reliable. While we do not doubt its accuracy, we have not verified and make no guarantee, warranty or representation about it. It is your sole responsibility to independently confirm its accuracy and completeness.



EASTLAKE BUSINESS PARK

18336-18398 Redmond-Fall City Road, Redmond, WA 98052

SPACE AVAILABLE - BUILDING D

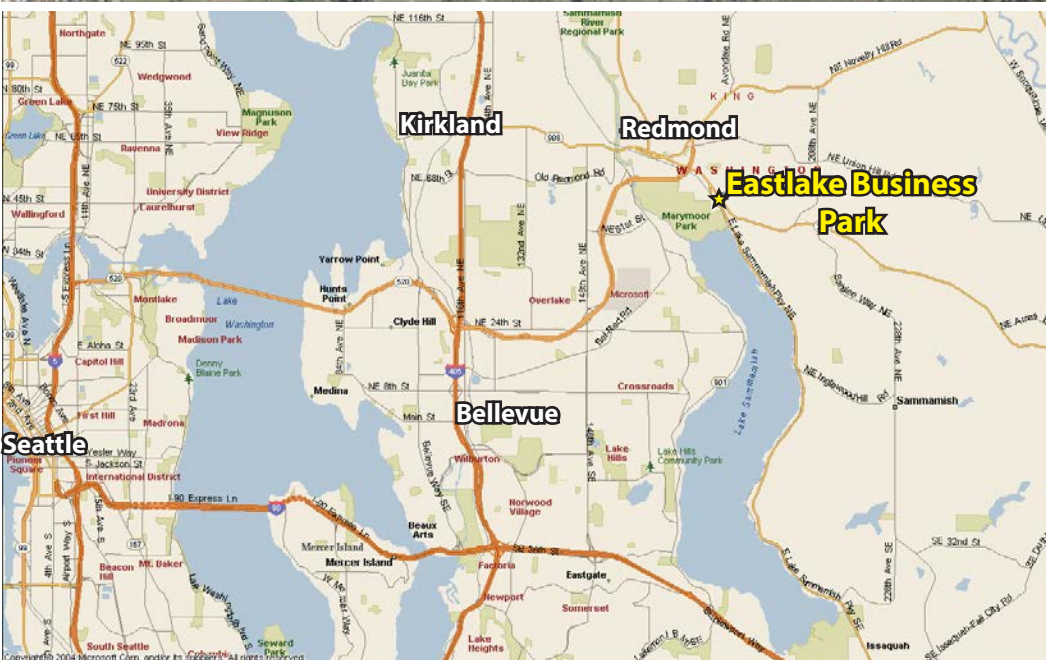
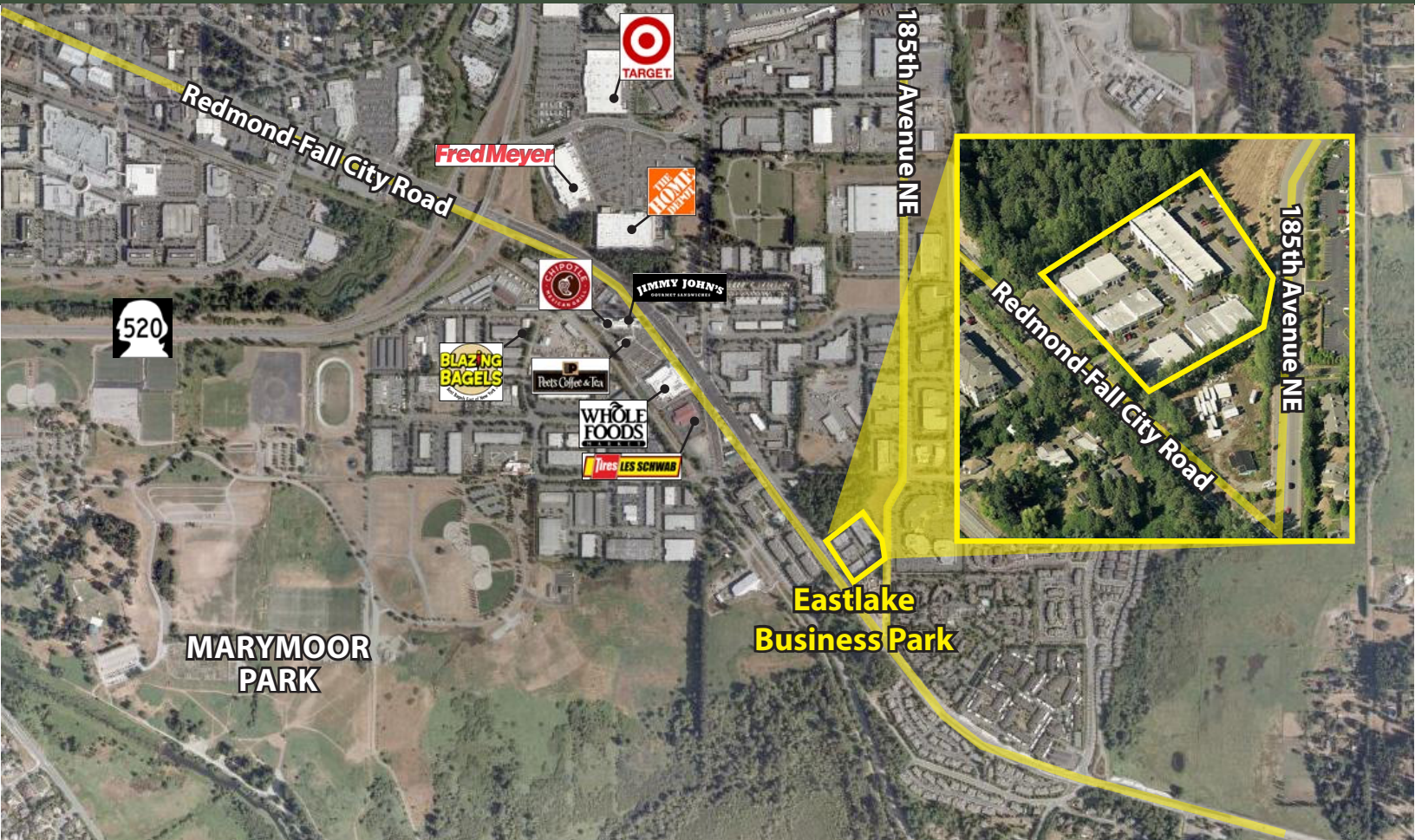


Rosen~Harbottle Commercial Real Estate | P.O. Box 5003 Bellevue, WA 98009-5003
phone: (425) 454-3030 fax: (425) 454-6705 | www.rosenharbottle.com

The information provided has been obtained from sources believed reliable. While we do not doubt its accuracy, we have not verified and make no guarantee, warranty or representation about it. It is your sole responsibility to independently confirm its accuracy and completeness.

EASTLAKE BUSINESS PARK

18336-18398 Redmond-Fall City Road, Redmond, WA 98052



For more information, contact:
ROSEN~HARBOTTLE
COMMERCIAL REAL ESTATE
Caleb Farnworth, CCIM
(425) 289-2235
calebf@rosenharbottle.com
www.rosenharbottle.com

Rosen~Harbottle Commercial Real Estate | P.O. Box 5003 Bellevue, WA 98009-5003
phone: (425) 454-3030 fax: (425) 454-6705 | www.rosenharbottle.com

The information provided has been obtained from sources believed reliable. While we do not doubt its accuracy, we have not verified and make no guarantee, warranty or representation about it. It is your sole responsibility to independently confirm its accuracy and completeness.