

**INDUSTRIAL  
LEASE**

Highway 167 - 93,855 CPD



## **KENT BUSINESS CENTER, BUILDING A & B**

**25316 - 25530 74th Avenue S | Kent, WA**

**Brian Stewart**

425.289.2222

brians@rosenharbottle.com

**Grant Rubenstein**

425.289.2220

grant@rosenharbottle.com

**Stossi Tsantilas**

425.279.7943

stossit@rosenharbottle.com

425.454.3030  
rosenharbottle.com

PO Box 5003  
Bellevue, WA 98009 - 5003





*Building A*



*Building A*



*Building B*

# HIGH-IMAGE OFFICE/ WAREHOUSE/FLEX SPACES

**1,702 SF - 5,130 SF Available**

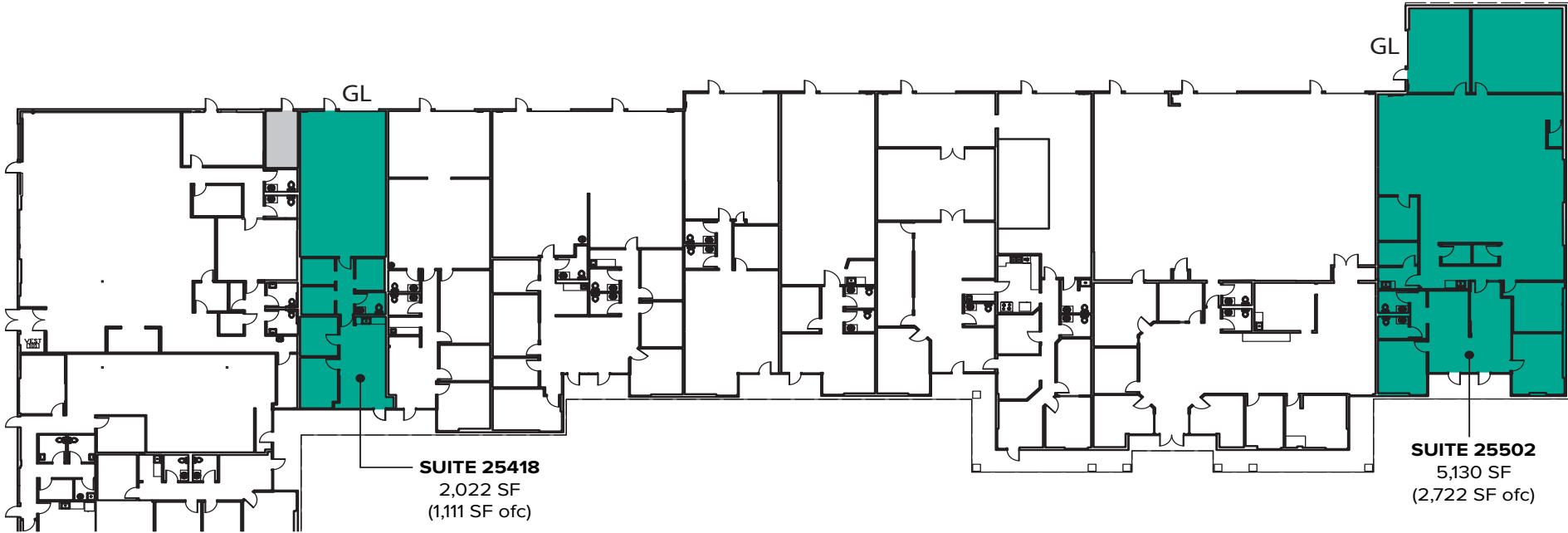
## LOCATION FEATURES:

- **Landlord Flexible on Office/Warehouse Ratios**
- Varying Suite Sizes - Ready to Lease
- Grade-Level Loading Doors
- Direct Entry to Suites
- 2.86/1,000 SF Parking Ratio
- Quick Access to State Route 167, SR 516 & Downtown
- Close-by Kent Station, Retail and Restaurant Amenities

The information provided herein has been obtained from sources believed to be reliable, but no representation or warranty, express or implied, is made with respect to the accuracy or completeness of any such information. Each prospective buyer or tenant should independently investigate, evaluate and verify all information provided herein and any other matters deemed material. Please consult your attorney, tax advisor or other professional advisor. The terms of sale or lease set forth herein are subject to change or withdrawal at any time and without notice.

# BUILDING A (AS-IS) FLOOR PLAN

Suite	Square Feet	Rate	Notes
25418	2,022 SF	Call Agents	Tech/Flex space with private offices, reception area, 1 restroom, open warehouse area, and 1 grade-level roll-up door. <b>Available now.</b>
25502	5,130 SF	Call Agents	Endcap Tech/Flex space with drop ceiling and HVAC throughout. Suite includes several private offices, 2 restrooms, reception area, open warehouse area, and 1 grade-level roll-up door. <b>Landlord flexible on Office/Warehouse ratios. Available now.</b>



The information provided herein has been obtained from sources believed to be reliable, but no representation or warranty, express or implied, is made with respect to the accuracy or completeness of any such information. Each prospective buyer or tenant should independently investigate, evaluate and verify all information provided herein and any other matters deemed material. Please consult your attorney, tax advisor or other professional advisor. The terms of sale or lease set forth herein are subject to change or withdrawal at any time and without notice.

# BUILDING B FLOOR PLAN

Suite	Square Feet	Rate	Notes
25514	1,702 SF (1,084 SF ofc)	Call Agents	Office/Warehouse space with several private offices, 1 restroom, kitchenette, open warehouse area, and 1 grade-level roll-up door. <b>Available with 30 days' notice.</b>



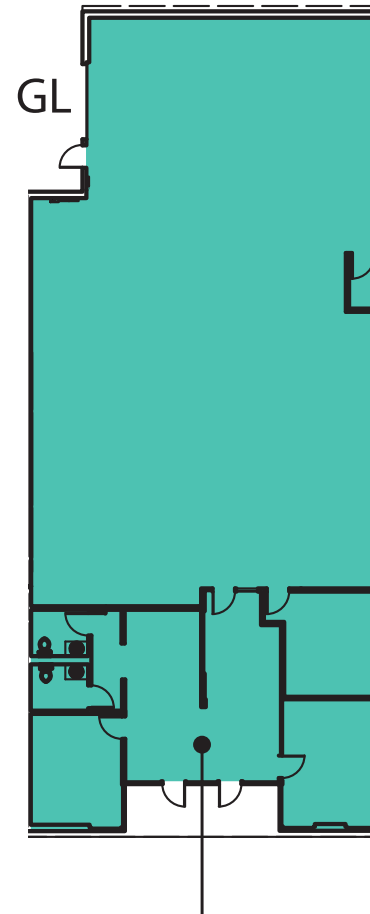
The information provided herein has been obtained from sources believed to be reliable, but no representation or warranty, express or implied, is made with respect to the accuracy or completeness of any such information. Each prospective buyer or tenant should independently investigate, evaluate and verify all information provided herein and any other matters deemed material. Please consult your attorney, tax advisor or other professional advisor. The terms of sale or lease set forth herein are subject to change or withdrawal at any time and without notice.

# SUITE 25502 SAMPLE FLOOR PLAN

## SUITE FEATURES

---

- 5,130 SF (1,535 SF - 5,130 SF ofc)
- Call Agents for Rate
- Landlord Flexible on Office/Warehouse Ratios
- End Cap Space
- Open Warehouse Area
- Office Area with 3 Private Offices
- 2 Restrooms
- 1 Grade-level Roll-up Door



**SUITE 25502**  
5,130 SF  
(1,535 SF ofc)

# LOCATION MAP

