

# Airport Commerce Center

11520 - 11710 AIRPORT ROAD, EVERETT, WA 98204



## OFFICE/WHSE ON AIRPORT RD

10,500 SF Available

\$1.35/SF Ofc | \$0.65/SF Whse, NNN



### FEATURES:

- ~2,417 SF Can be Converted to Warehouse
  - 2 Grade-Level Doors Can be Added
- Rare Flex Space Available
- Grade-Level & Dock-High Loading
- Glass Storefronts
- Quick Access to Paine Field, Hwy 99, and I-5
- 22' Clear Height

For more information, contact:

**ROSEN~HARBOTTLE  
COMMERCIAL REAL ESTATE**

**Grant Rubenstein**

(425) 289-2220

grant@rosenharbottle.com

**Caleb Farnworth, CCIM**

(425) 289-2235

calebf@rosenharbottle.com

www.rosenharbottle.com

Rosen~Harbottle Commercial Real Estate | P.O. Box 5003 Bellevue, WA 98009-5003  
phone: (425) 454-3030 fax: (425) 454-6705 | www.rosenharbottle.com

The information provided has been obtained from sources believed reliable. While we do not doubt its accuracy, we have not verified and make no guarantee, warranty or representation about it. It is your sole responsibility to independently confirm its accuracy and completeness.

# Airport Commerce Center

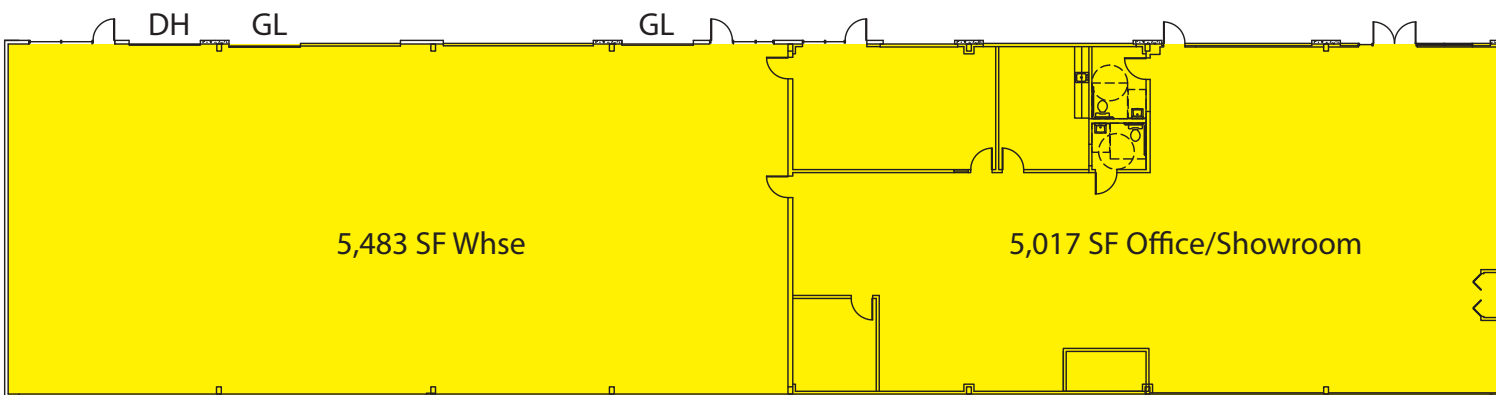
11604 - 11710 AIRPORT ROAD, EVERETT, WA 98204

## Building E - As Is

Suite	Total SF	Rent/ Mo	NNN	Total/ Mo
-------	----------	----------	-----	-----------

Bldg E	10,500 SF (5,017 SF ofc)	\$10,337	\$3,045	\$13,382
--------	--------------------------	----------	---------	----------

Notes: Full building available. Space includes 5,017 SF office/showroom, 2 GL & 1 DH loading doors



## Building E - Whse Conversion

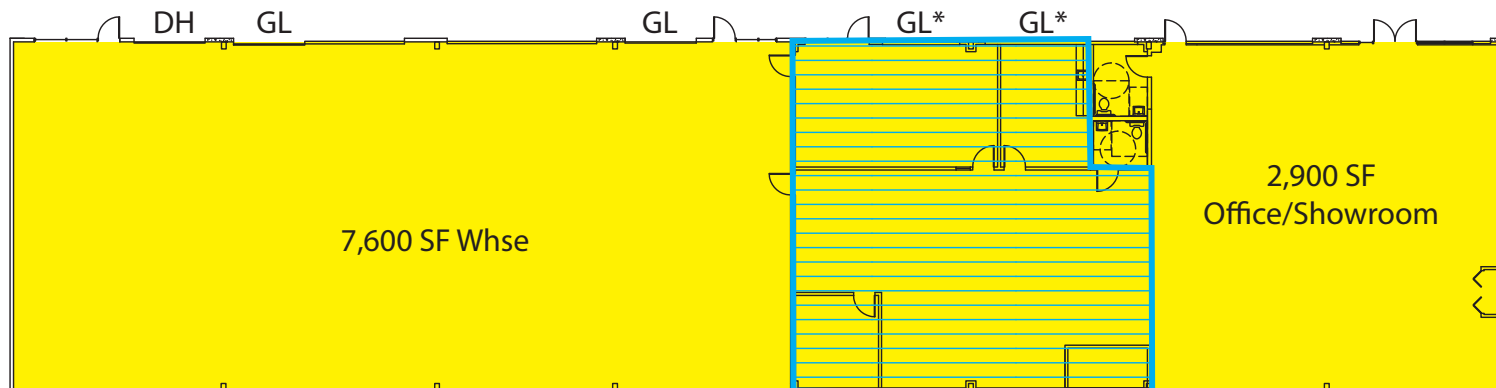
 ~2,417 SF can be converted to warehouse

\* GL doors can be added after conversion

Suite	Total SF	Rent/ Mo	NNN	Total/ Mo
-------	----------	----------	-----	-----------

Bldg E	10,500 SF (2,900 SF ofc)	\$8,855	\$3,045	\$11,900
--------	--------------------------	---------	---------	----------

Notes: Full building available. ~2,417 SF of office/showroom can be converted to warehouse, up to 4 GL & 1 DH loading doors

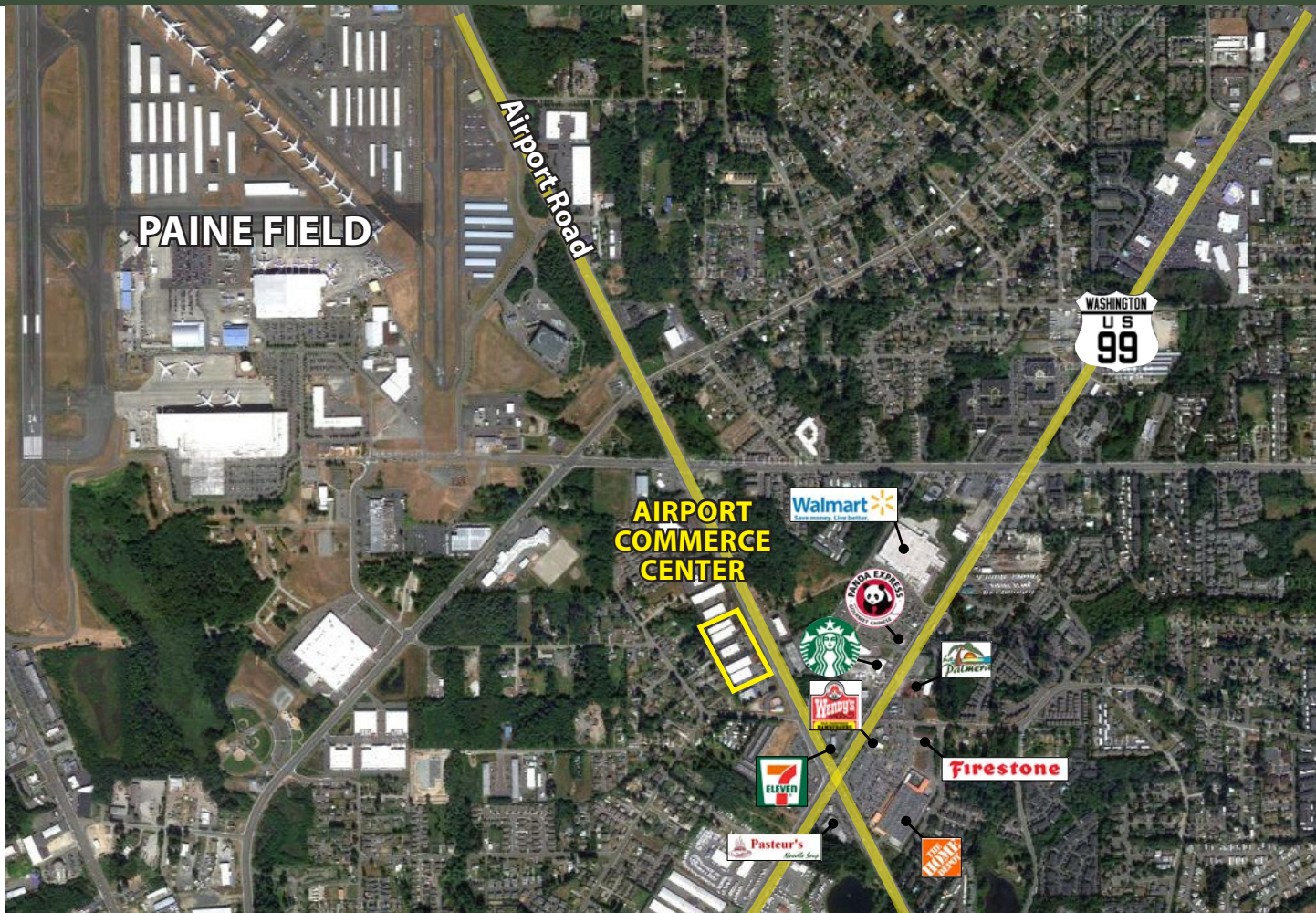


Rosen~Harbottle Commercial Real Estate | P.O. Box 5003 Bellevue, WA 98009-5003  
 phone: (425) 454-3030 fax: (425) 454-6705 | [www.rosenharbottle.com](http://www.rosenharbottle.com)

The information provided has been obtained from sources believed reliable. While we do not doubt its accuracy, we have not verified and make no guarantee, warranty or representation about it. It is your sole responsibility to independently confirm its accuracy and completeness.

# Airport Commerce Center

11520 - 11710 AIRPORT ROAD, EVERETT, WA 98204



For more information, contact:

## ROSEN~HARBOTTLE COMMERCIAL REAL ESTATE

**Grant Rubenstein**

(425) 289-2220

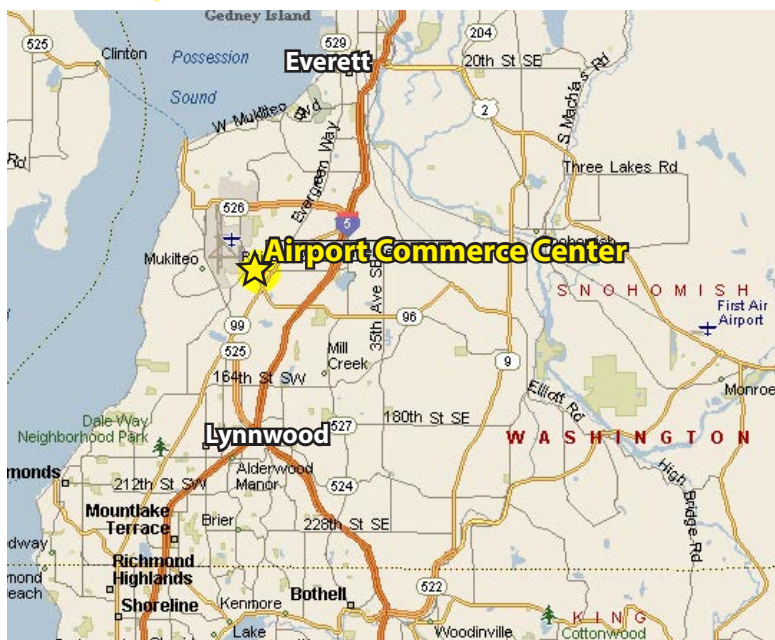
grant@rosenharbottle.com

**Caleb Farnworth, CCIM**

(425) 289-2235

calebf@rosenharbottle.com

www.rosenharbottle.com



Rosen~Harbottle Commercial Real Estate | P.O. Box 5003 Bellevue, WA 98009-5003  
phone: (425) 454-3030 fax: (425) 454-6705 | www.rosenharbottle.com

The information provided has been obtained from sources believed reliable. While we do not doubt its accuracy, we have not verified and make no guarantee, warranty or representation about it. It is your sole responsibility to independently confirm its accuracy and completeness.